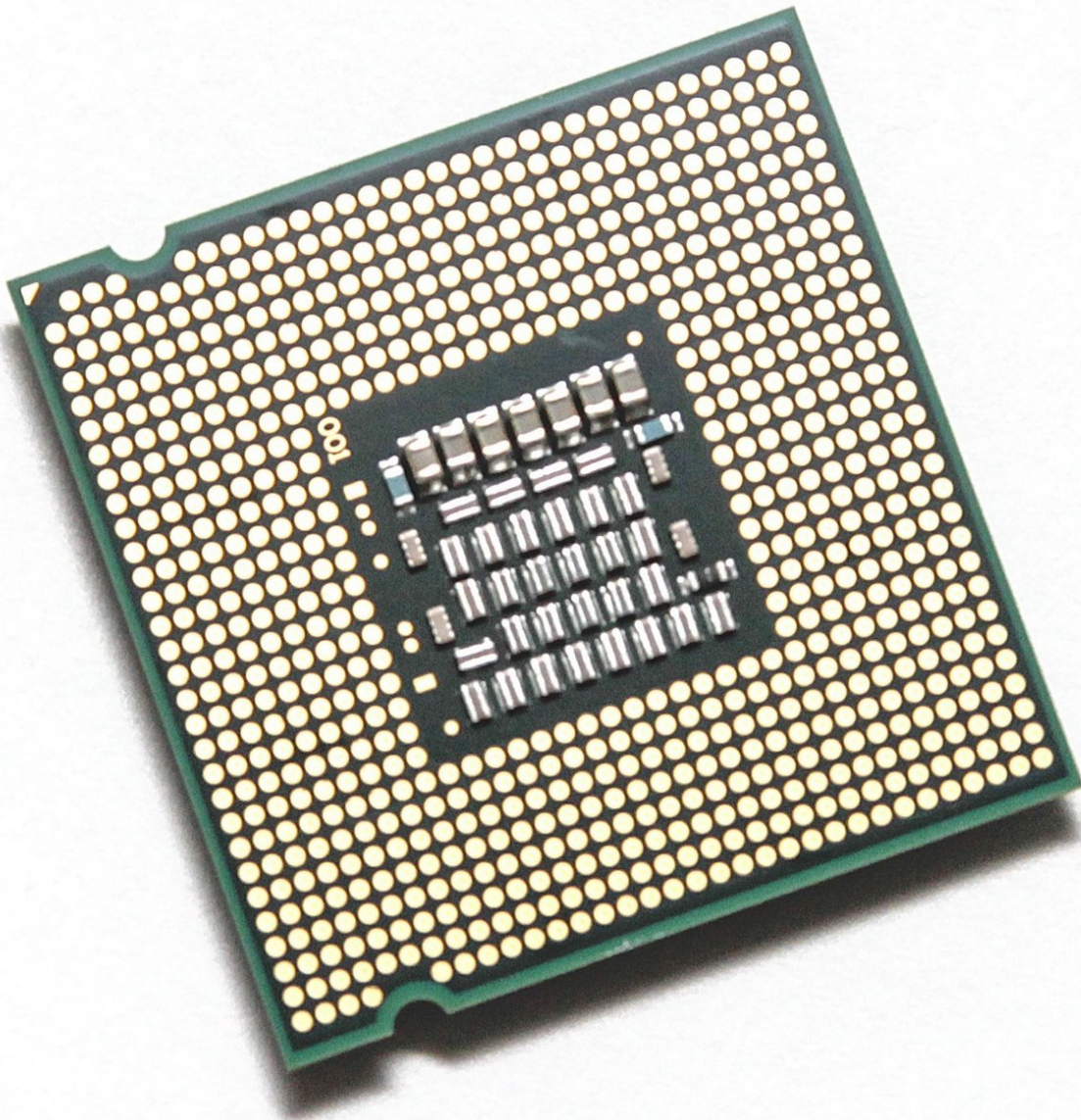




Dell Precision T3400 CPU Replacement

This guide will show you how to replace or upgrade the computer's processor, also known as the CPU.

Written By: Jenalina Santiago



INTRODUCTION

Be sure to check the Dell Precision T3400's manufacturing guidelines and your new CPUs specifications to ensure compatibility.



TOOLS:

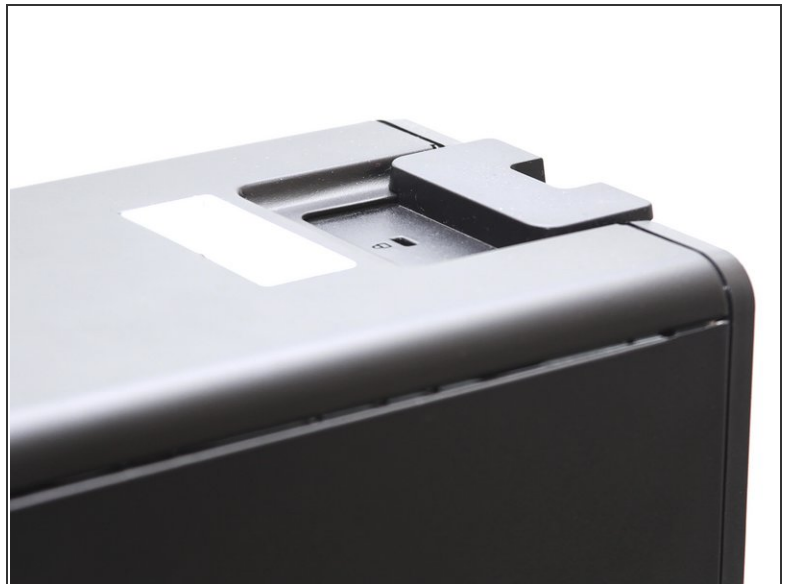
- [Phillips #2 Screwdriver](#) (1)
-

Step 1 — Power down the PC.



- If your PC is on, shut it down.
 - Unplug the PC from the wall.
 - Disconnect the power cable from the tower, unplug keyboards, monitors, or any other devices, and remove any USB devices.
- i** Press the power button after completely shutting down the PC. This will "ground" the motherboard, preventing any short circuiting from occurring.

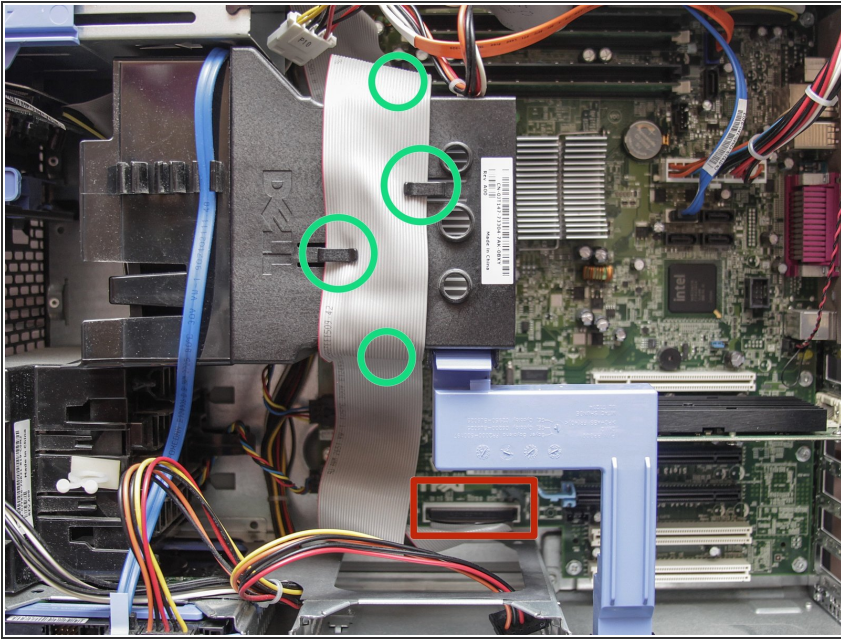
Step 2 — Remove the computer's side panel.



- Lay the computer on its side so the panel faces up.
 - Push the cover release latch at the back of the computer's case. The cover should pop off and away from the computer.
- i** Make sure the computer is on its side before you begin replacing any parts.

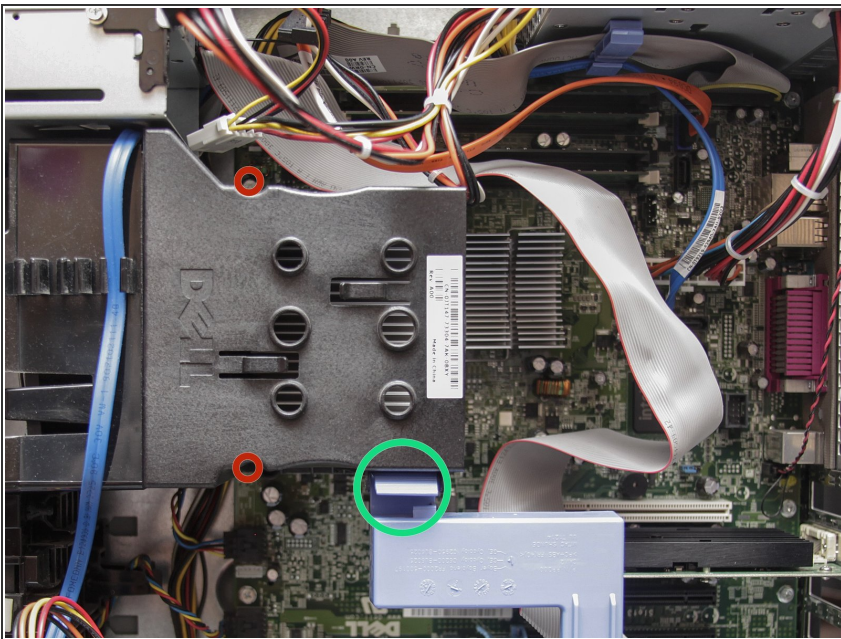
This document was generated on 2019-09-19 10:22:52 AM (MST).

Step 3 — Remove the ribbon cable for the floppy disk drive



- If you have a floppy disk drive, it has a ribbon cable that runs over the heat-sink assembly that must be moved out of the way. To remove it, first unplug it from the system board **by pulling on plastic pull ring**.
- The ribbon cable is fastened to the heat-sink assembly with four clips. Simply **slide the ribbon cable out from under these clips** and move the cable out of the way.

Step 4 — Remove the Heat Sink

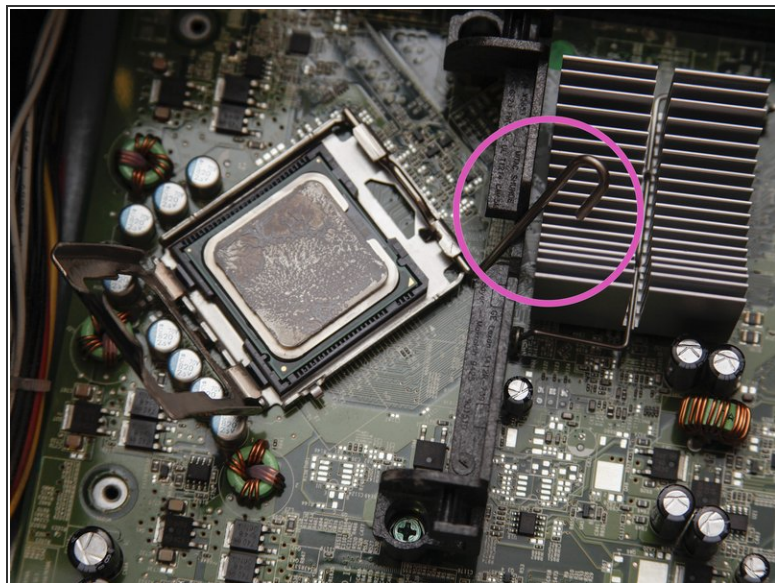
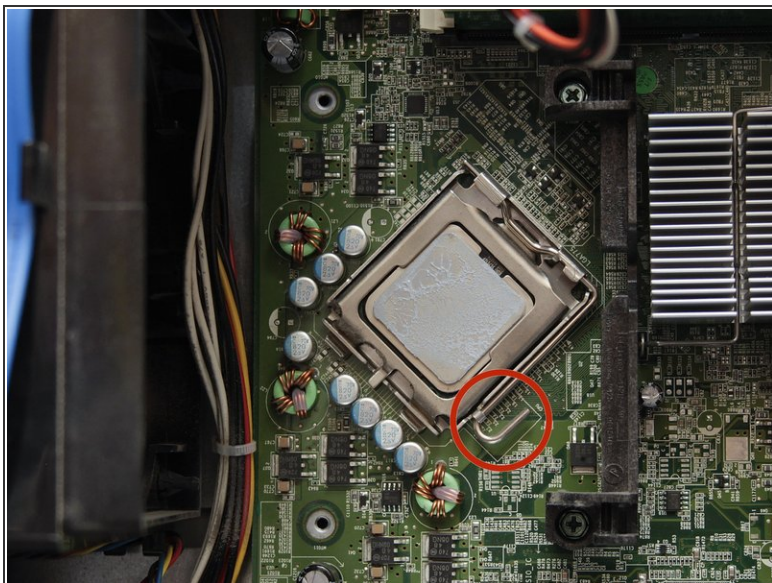


CAUTION: Even though the heat-sink assembly has a protective plastic covering, be careful when

touching it -- the assembly may still be hot if your PC was just on.

- Release the blue plastic secure lever under the heat-sink assembly by pushing the tab and pivoting the lever down and away from the assembly.
- Remove the two screws located at the top and bottom of the heat-sink assembly using a standard Phillips-head screwdriver.
- Pull the heat-sink assembly off the board as if it were a door with its hinges on the right.
- ✦ Clean the old thermal paste from the contact points on the heat sink

Step 5 — Remove the CPU

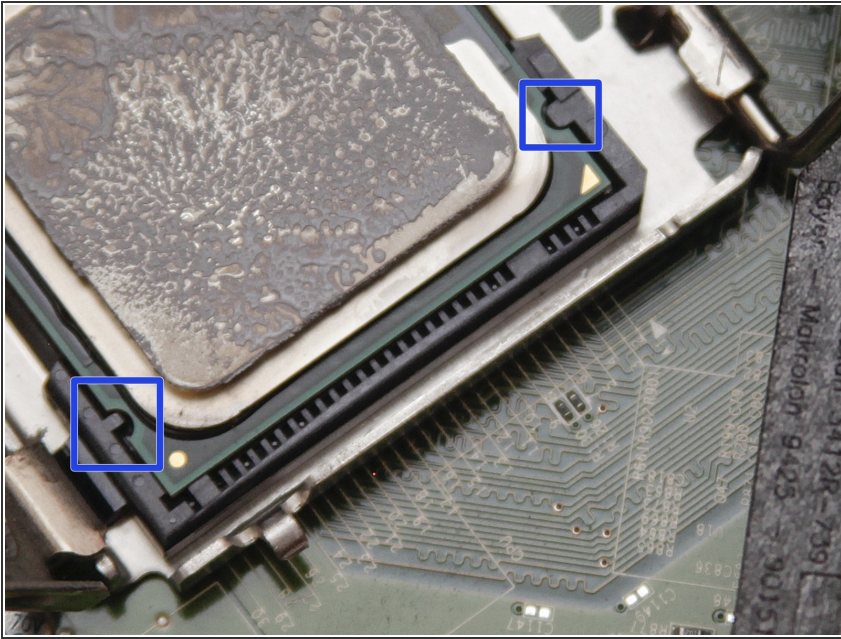


- The CPU is held in place by a small metal door. The door is held shut by a lever with a hook. Push that lever down toward the motherboard while sliding it out from under the latch.
- Once the lever is free, pull it back away from the door - this will free the door from the bar latch.
- Open the door and carefully lift the CPU chip out of its socket

NOTE: The CPU is not fixed in its socket, so no force is needed when removing it.

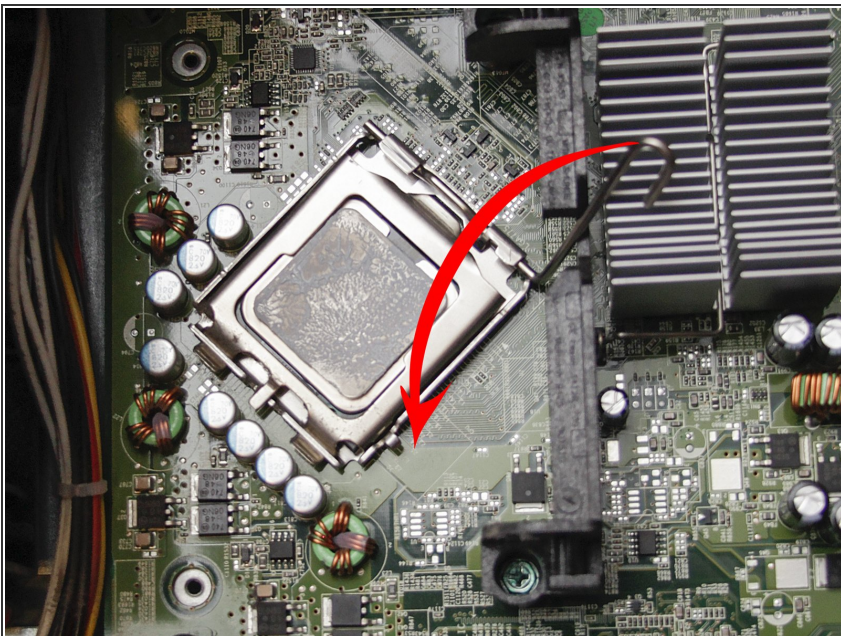
CAUTION: Handle the CPU gently. Damage could cause it to malfunction.

Step 6 — Carefully place the CPU into the now-empty socket



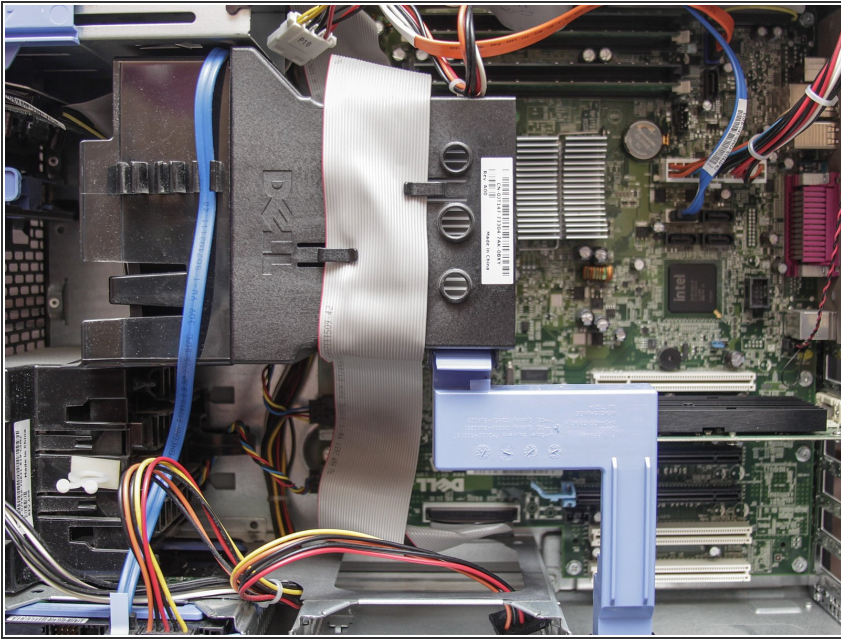
- Make sure to line up the front and rear of the CPU with the front and rear of the socket. Incorrectly placing the CPU into the socket could cause permanent damage to both the motherboard and the CPU.
- **TIP:** The CPU and CPU slot have notches on either side that should match up.

Step 7 — Secure the new CPU




- Close the metal door carefully once the CPU is in place.
 - Gently push the lever down toward the motherboard, and in to the right so it rests back under the latch hook.
 - If you feel resistance, do not force the lever. Make sure that the CPU is securely in place and try again.
- i NOTE:** If your new CPU came with thermal compound, you can now apply it to the metal backing.

Step 8 — Reinstall the Heat-Sink Assembly



- Place the heat-sink assembly back on its hinges.
- Pivot the heat-sink assembly back to its original position and secure it with the two screws removed earlier.
- Replace the floppy drive's ribbon cable (if you have one).

NOTE: Be sure the heat-sink assembly is seated properly and secured tightly. If it is loose or uneven, it cannot absorb heat properly and could cause your PC to unexpectedly shut down to prevent overheating.

 Clean the heat sink before reassembly

To reassemble your device, follow these instructions in reverse order.