



Dell Sp2208wft REPAIR

Written By: Tim



INTRODUCTION

The display turns on and off immediately ...

A recurring breakdown on many flat screen ... of all Brands ...

The capacitors 330uf35v105 ° located too close to the heatsinks burst.

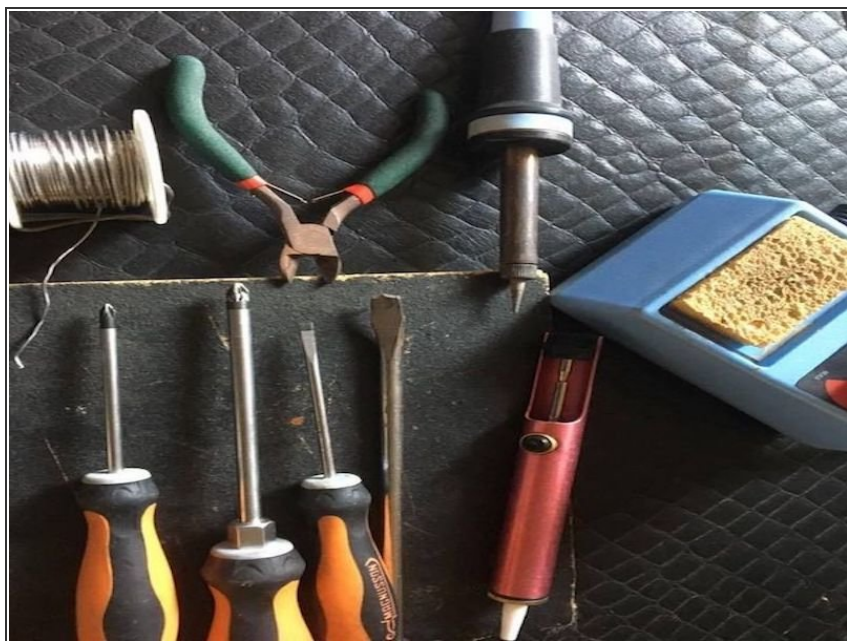
I suggest you replace them with their little brothers of greater resistance, the 330uf35v135 °

Step 1 — Dell Sp2208wft Repair -capacitor replacement



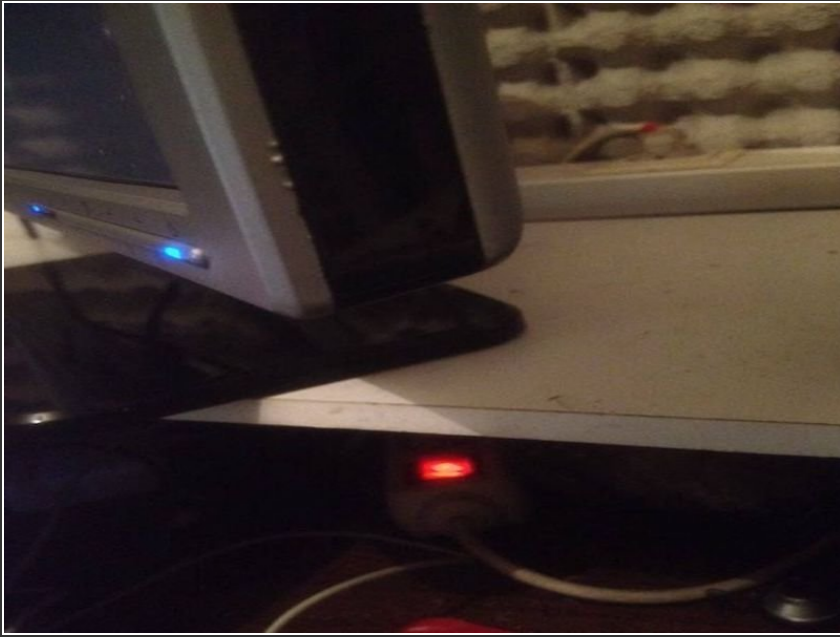
- Provide 6 capacitors 330uf35v135 °, pay attention to the maximum height 20mm maximum.

Step 2



- You will need all the tools on the pictures, flathead screwdriver, large and small Phillips screwdrivers, large and small soldering iron for precision desoldering, some tin, desoldering pump (also known as solder sucker), small cutting pliers, and patience

Step 3



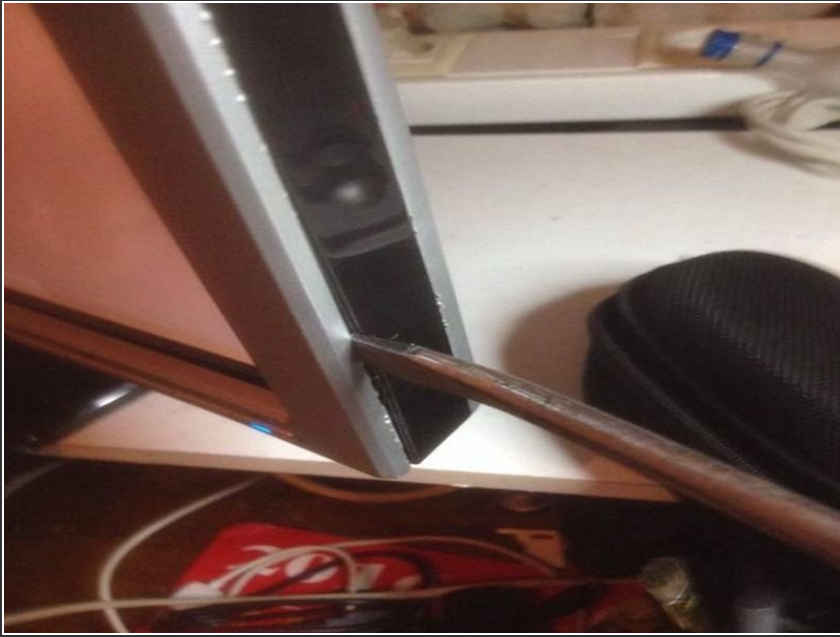
- The screen consists of 4 parts
GRAY frame, clipped to a BLACK
section that is itself attached to the
BACK COVER on the inside, and
the foot (or support) depending on
your installation.

Step 4



- De-attach the front of the black
outline, be careful it is plastic ... the
easier to start from corners using the
small flat screwdriver

Step 5



- Once unclipped ; You can use the biggest flathead screwdriver to separate the rest of the black edge, being careful not to scrape the outside, and being extra sure not to break the fasteners.

Step 6



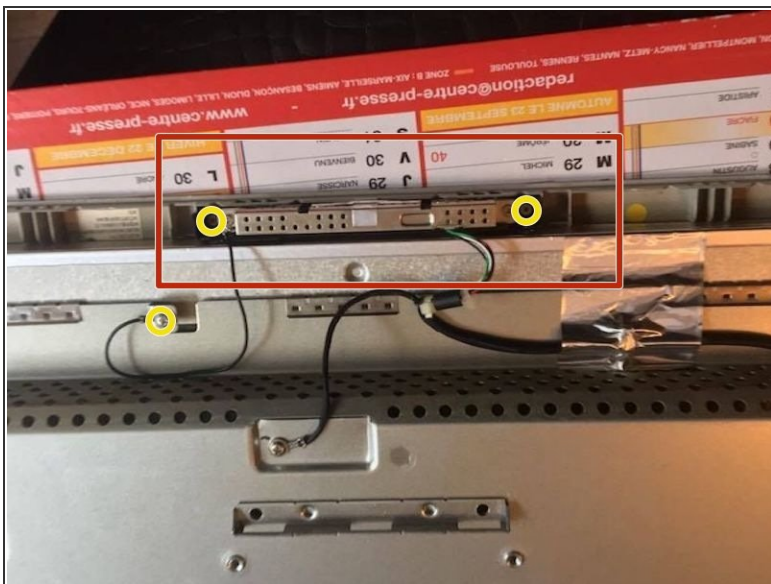
- The front panel is now totally un-clipped, put the screen (screen side down) against the table, being careful not to re-clip the front, then remove the stand

Step 7



- Under the mount bracket you find 4 large black screws. Take your large Phillips screwdriver and unscrew them. You can now remove the rear cover.

Step 8



- Disconnect the various connectors with a small Phillips screwdriver, remove the webcam and disconnect it

Step 9



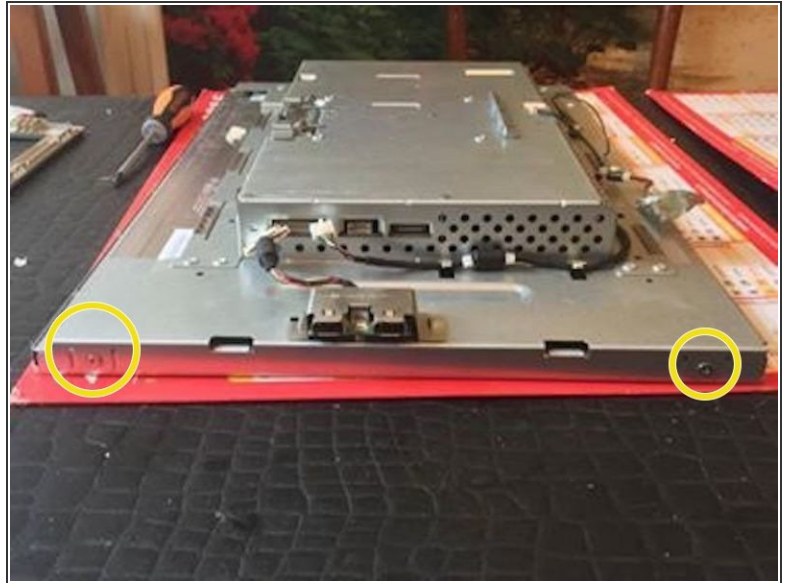
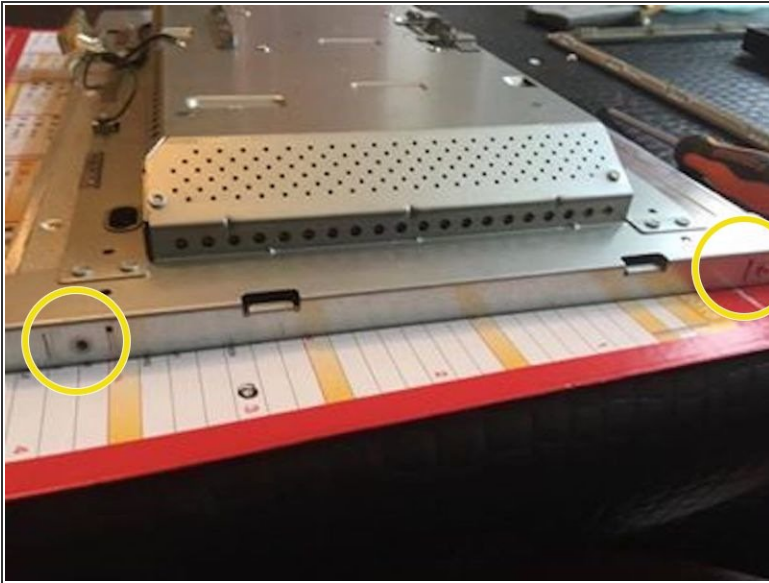
- Disconnect the usb hub, ribbon and other connector from the webcam cable. You also have four other connectors to be disconnected located on the top and bottom right as shown in the picture.

Step 10



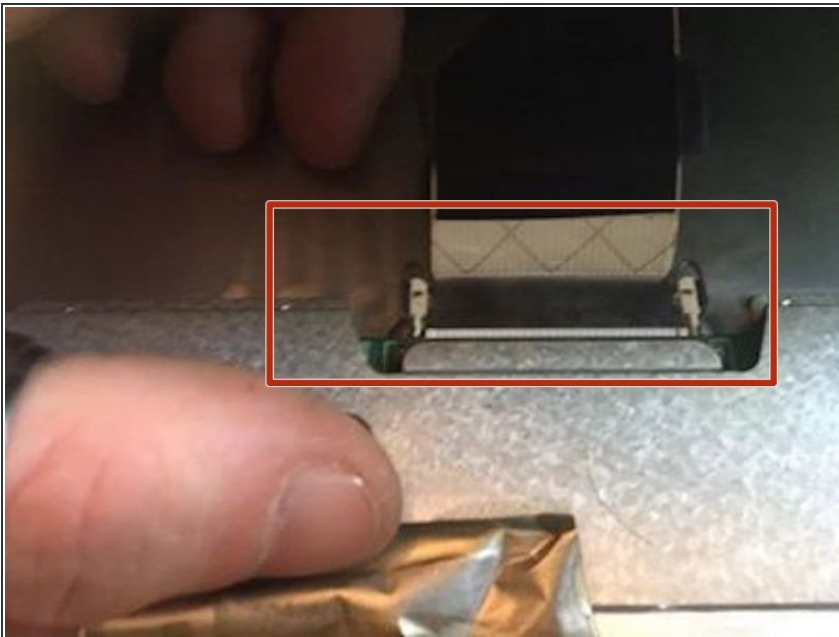
- Remove the screws from the power jack of the hdmi, vga, and dvi ports, if any.

Step 11



- On each side of the screen, you'll find have 2 screws, a total of 4, remove them all.

Step 12



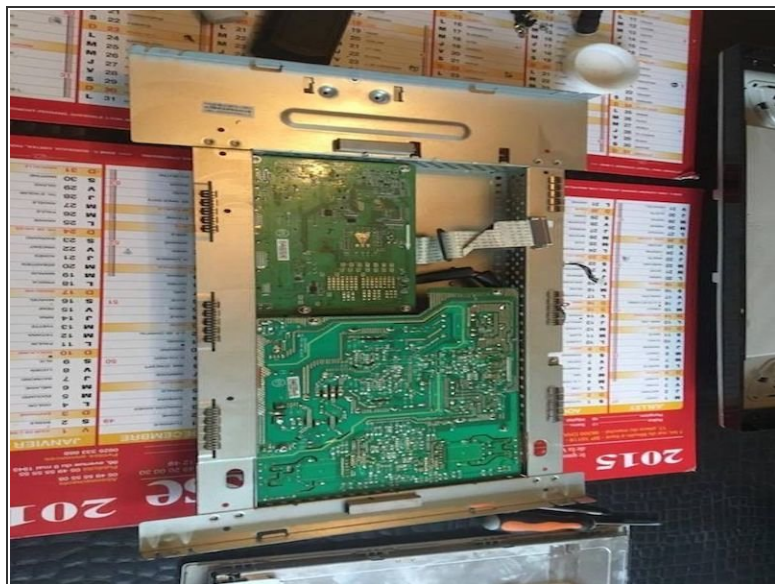
- The most delicate part of the repair is unplugging video cable
- **Caution** if the slot of the video cable breaks the screen will be unrecoverable.

Step 13



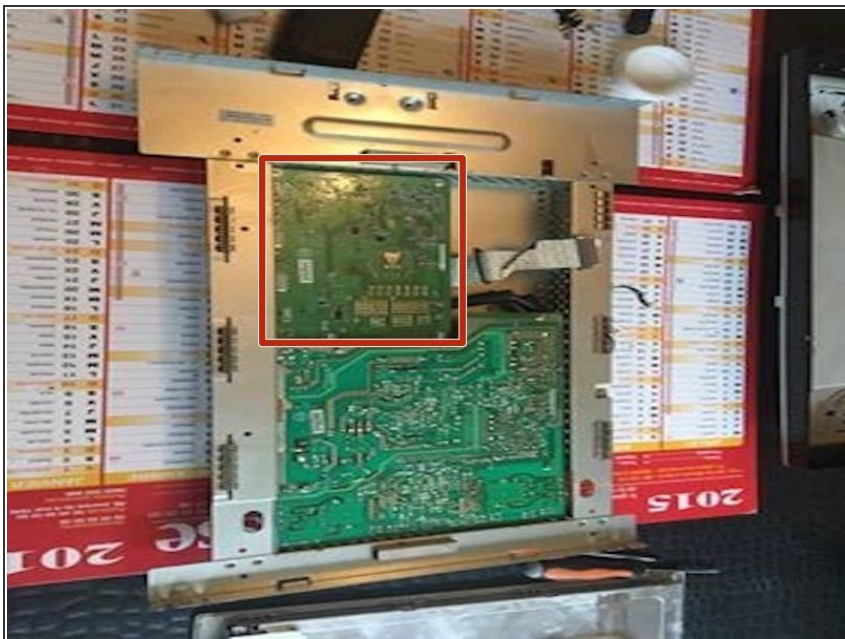
- Between the metal cover and the screen, disconnect the video cable. Press each side toward the center, and push toward the bottom of the screen to remove. Please take your time. and be careful!!

Step 14



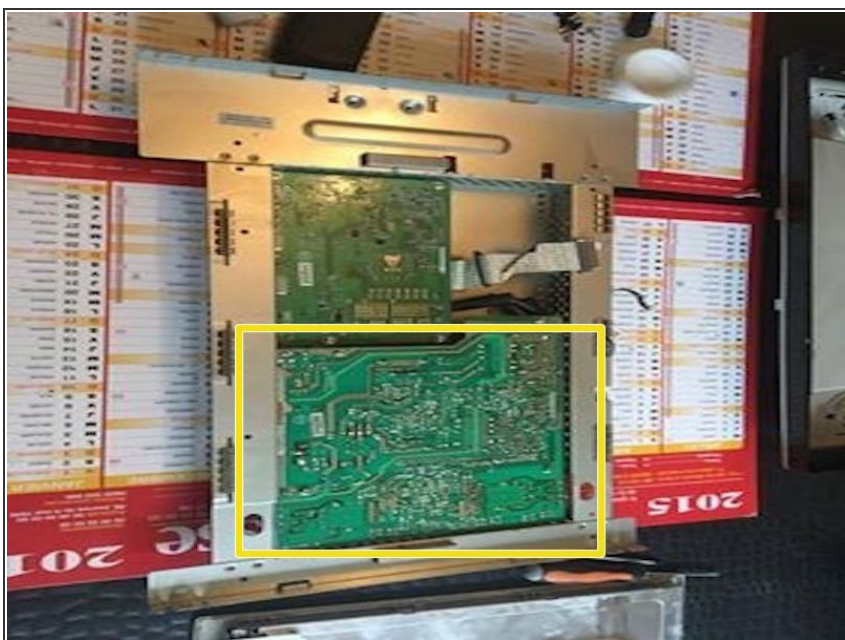
- Once the ribbon is disconnected, you can remove the metal cover from the display. Good job, the hardest part is over.

Step 15



- Take the metal cover, remove the 4 screws of the smallest of the 2 electronic boards (Video card) and unplug the only slot

Step 16



- You can now remove the screws from the other electronic board (power board)

Step 17



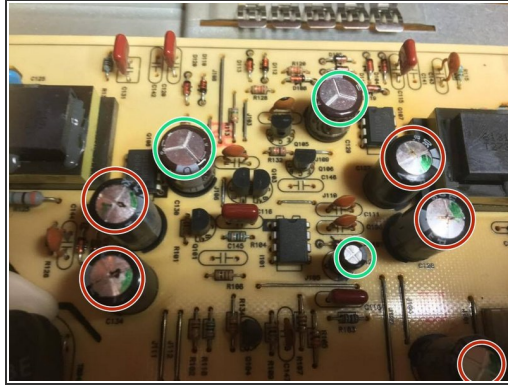
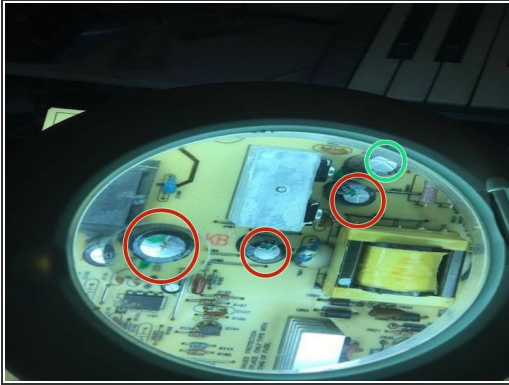
- You need to REPLACE defective capacitors ... How? In this case, its simple, since the capacitor was subjected to a temperature exceeding 105 ° inside the screen, it burst.

Step 18



- When the screen is on for several hours, the cards are not well ventilated with the capacitors placed next to the heat sink.
- But be careful this is not a general rule for testing a capacitor.

Step 19



- If the top of the capacitor is not flat; it means its died example showed in red , in green the living. In yellow heat sink.

Step 20



- Take the time to observe your card, mark the capacitors with rounded top, with a marker, and their polarity, even if the polarity is written on the card at dell not all manufacturers do that ...
- the identification before disassembling is a good habit to prevent undesired surprises at the reassembly.

Step 21



- Once the 6 capacitors have been changed you can screw the power card back and follow the instruction back wards
- Be careful, do not forget to reconnect everything. And long life to you and your Dell SP2208wft. Do not throw any more, repair! You can do it !!!

To reassemble your device, follow the instructions in reverse order