



Dell Streak 10 Pro Rear Camera Replacement

Replacing a rear camera for a Dell Streak 10 Pro.

Written By: Kayji Arai



INTRODUCTION

If you need to reinstall a new rear camera, follow this guide to access the motherboard and the camera. For this guide you will be needing a plastic opening tool, a Phillips #0 screwdriver, and tweezers.



TOOLS:

- [Phillips #0 Screwdriver](#) (1)
 - [Tweezers](#) (1)
 - [iFixit Opening Tools](#) (1)
-

Step 1 — Battery



- Place the device flat on its screen.
- Using the plastic opening tools, pry open the top segment of the tablet where the camera is located.
- Take the segment off and place it to the side.

Step 2



- Remove four 4mm Phillips #0 screws.

Step 3



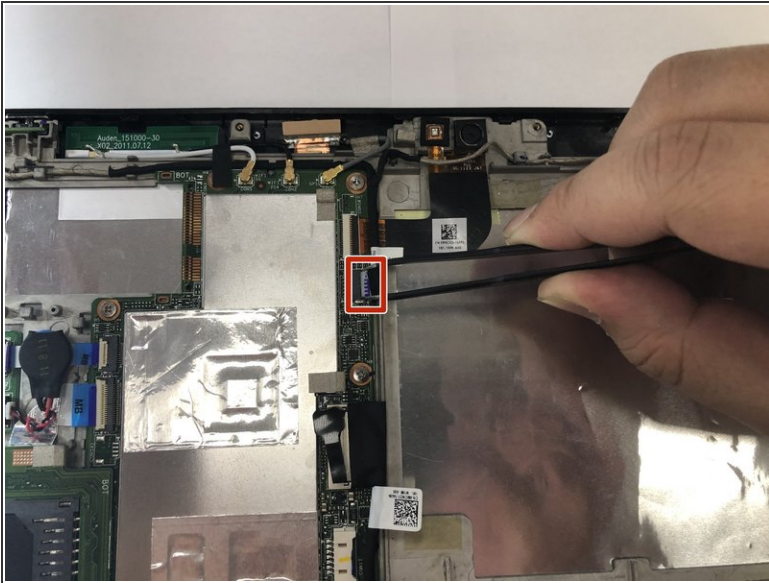
- Using the plastic opening tool, lift off the entire back screen of the tablet.

Step 4



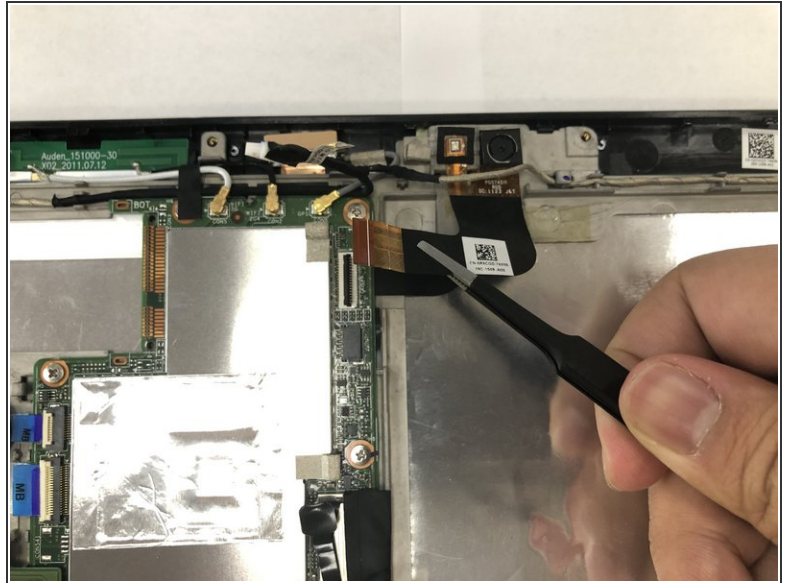
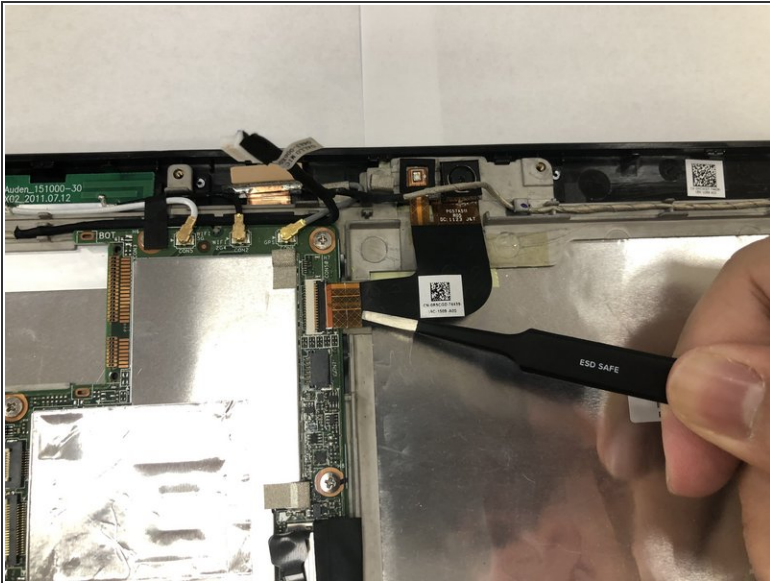
- Disconnect the no-fuss ribbon cable connector.
 - ⓘ The best way is to safely pull the white connector straight out of the socket. Using the tweezers, pull out the white connector that contains the red, green, blue, and black cords connected to it.
- Remove the battery by gently lifting it out of the device.

Step 5 — Rear Camera



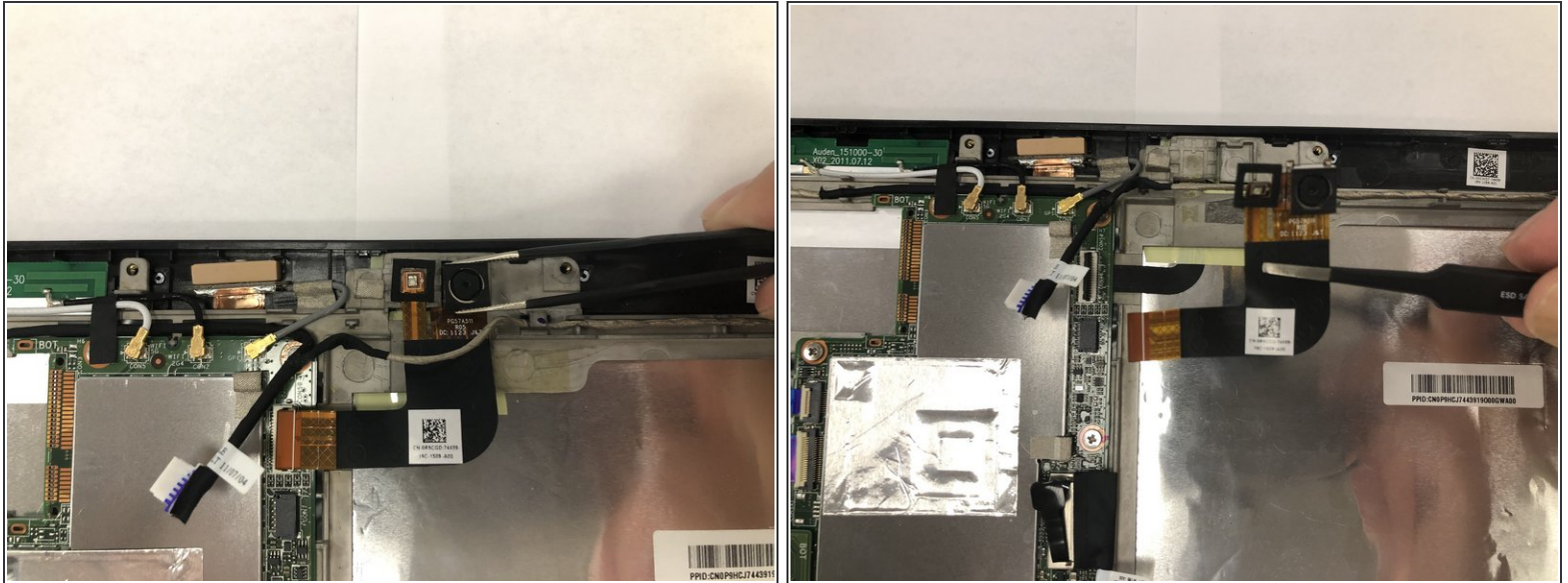
- Disconnect the no-fuss ribbon cable connector. Using tweezers, carefully pull the connector straight out of the socket.
- ⓘ The white connector is attached to a black wire.

Step 6



- Disconnect the delicate ribbon cable from the Zero Insertion Force (ZIF) Connector.
- ⓘ To disconnect the cable, use the tip of a spudger or your fingernail to flip up the small black locking flap. Then, you can safely pull the cable out.

Step 7



- Using the tweezer, carefully wiggle off the camera attached to the base.
 - ⓘ This may take a few minutes. Be gentle while applying pressure.
- After it wiggles free, lift the camera away from the base of the tablet.

To reassemble your device, follow these instructions in reverse order.