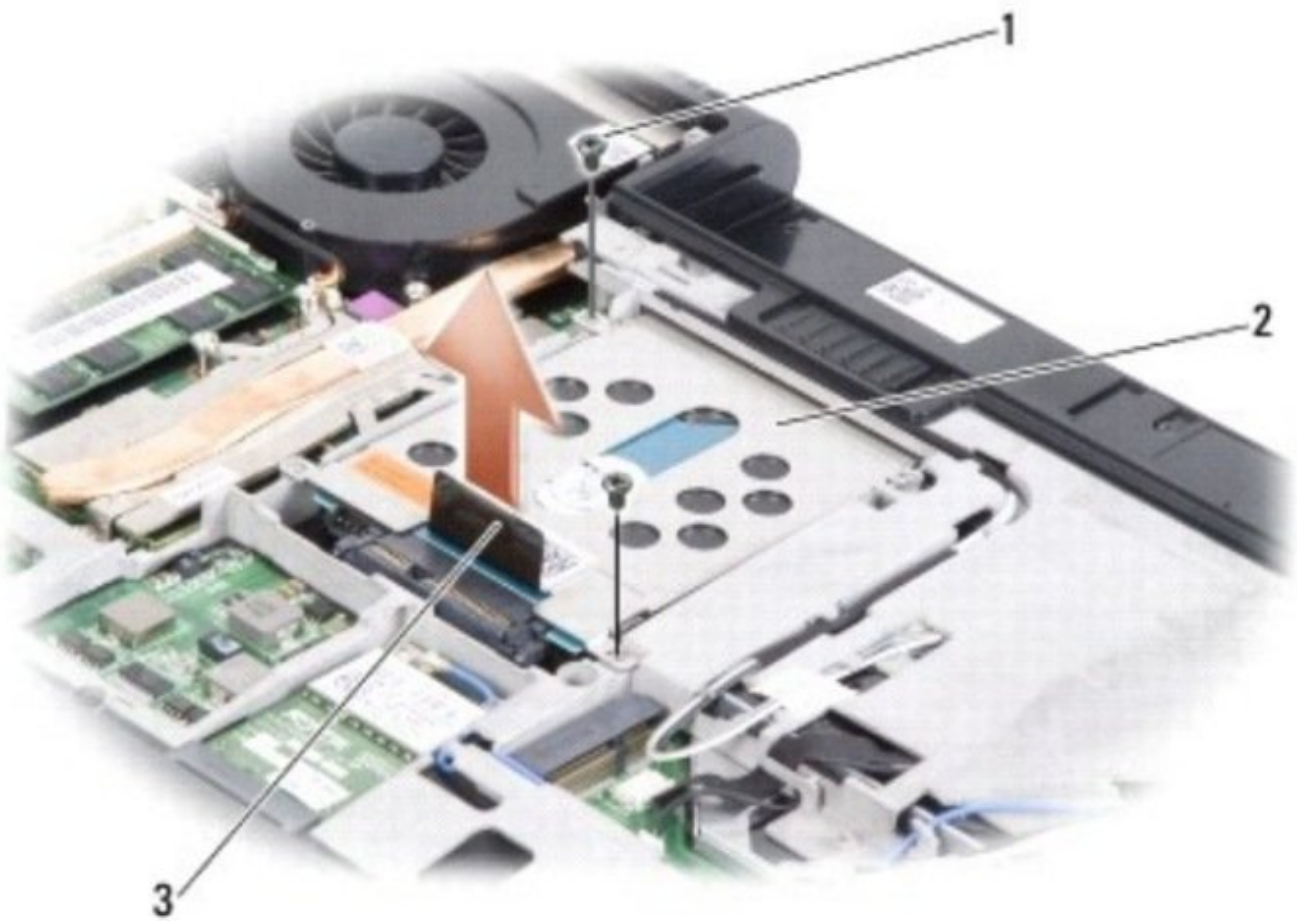




Dell Studio 1435 Hard Drive Replacement

Written By: Johnathan Hammond

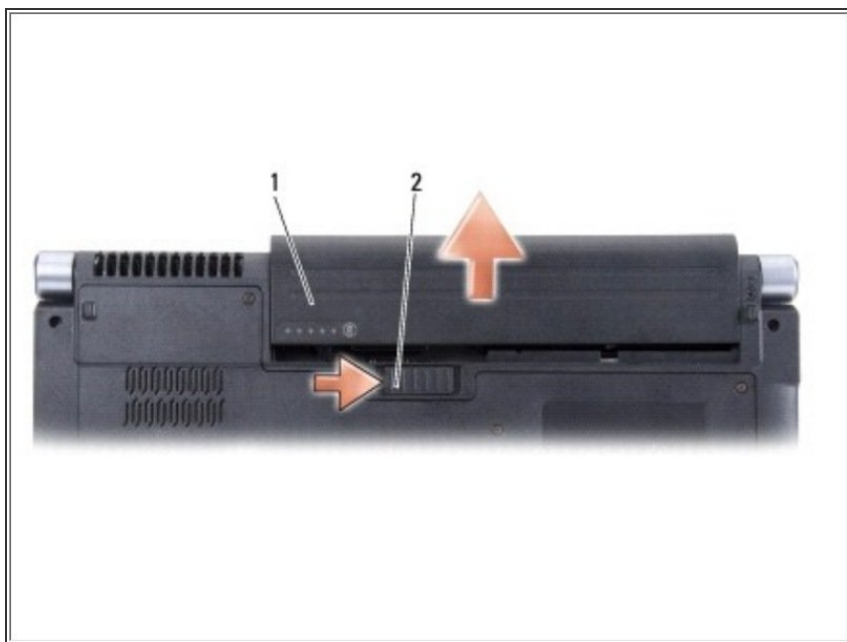




TOOLS:

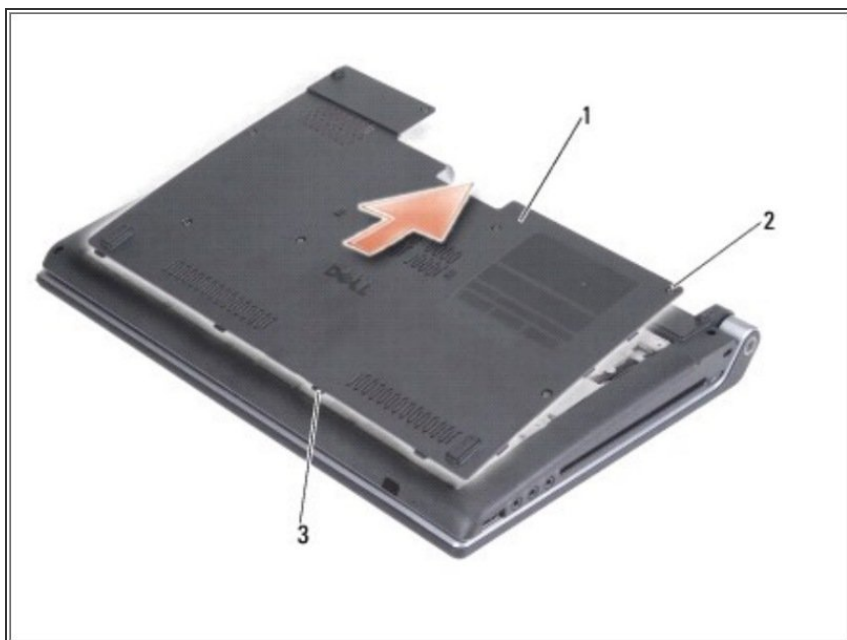
- [Phillips #0 Screwdriver](#) (1)
-

Step 1 — Battery



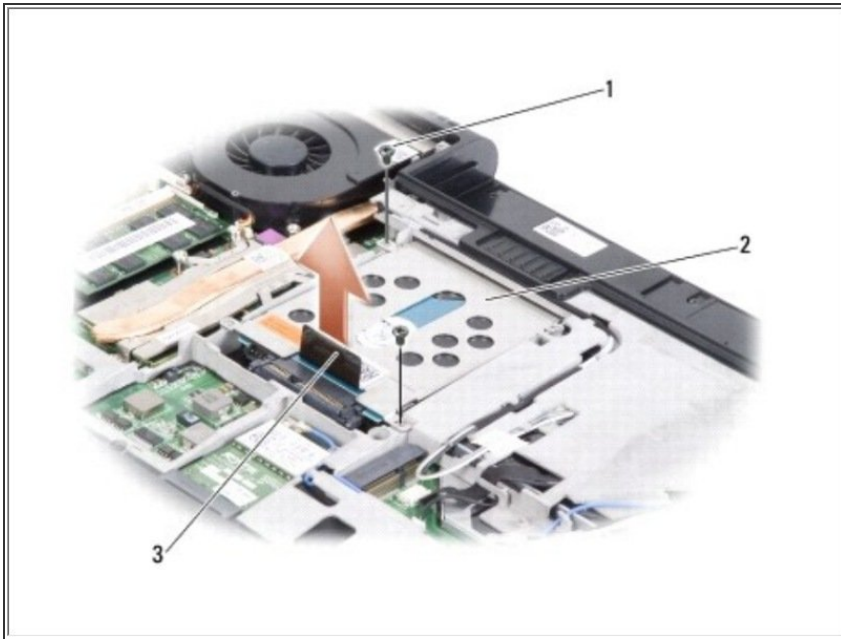
- Slide the battery release latch to the side.
- Slide the battery out of the battery bay.

Step 2 — Base Cover



- Loosen the seven captive screws on the base cover and lift the cover off the computer at an angle as shown in the figure.

Step 3 — Hard Drive



- Remove the two screws on the hard drive assembly.

Step 4



- Pull the pull tab to disconnect the hard drive assembly from the system board connector.
- Pull the interposer to detach it from the hard drive.
 - Remove the four screws (two on either side) to detach the hard drive cage from the hard drive.
- Lift the hard drive cage off the hard drive.

To reassemble your device, follow these instructions in reverse order.