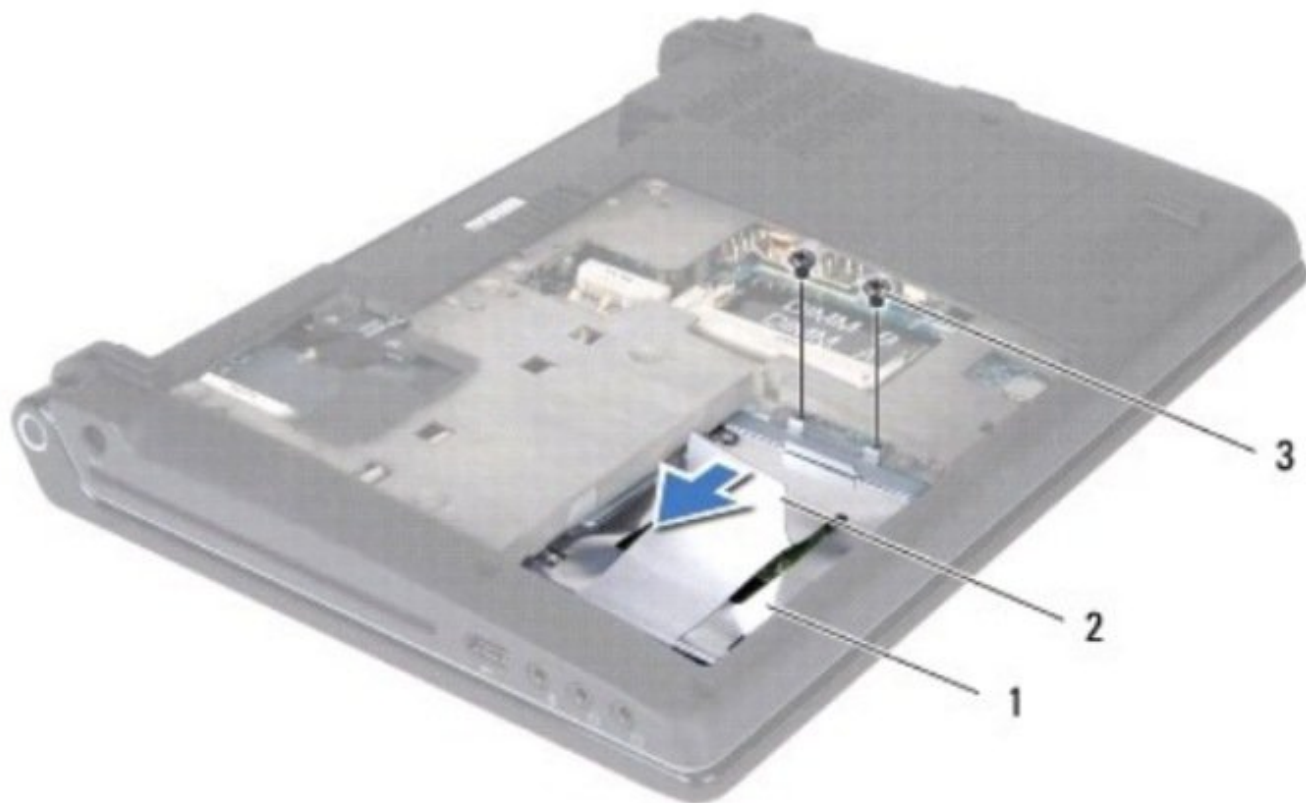




# Dell Studio 1457 Hard Drive Replacement

Written By: Johnathan Hammond

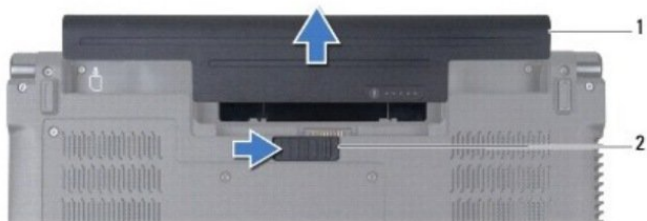




## TOOLS:

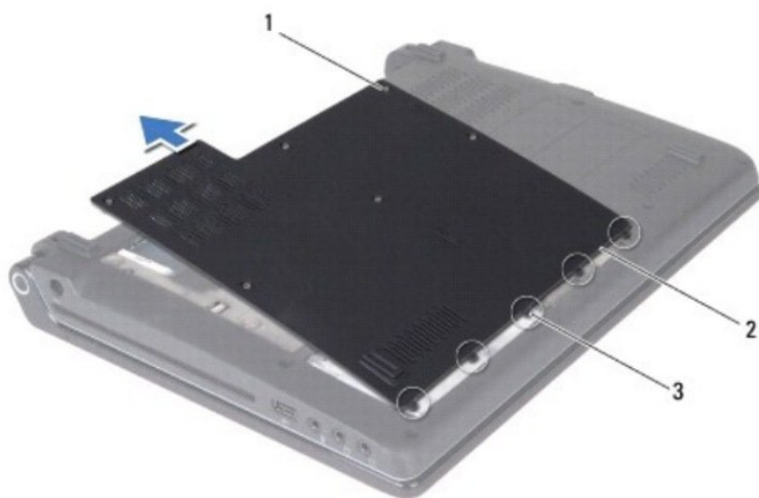
- [Phillips #0 Screwdriver](#) (1)
-

## Step 1 — Battery



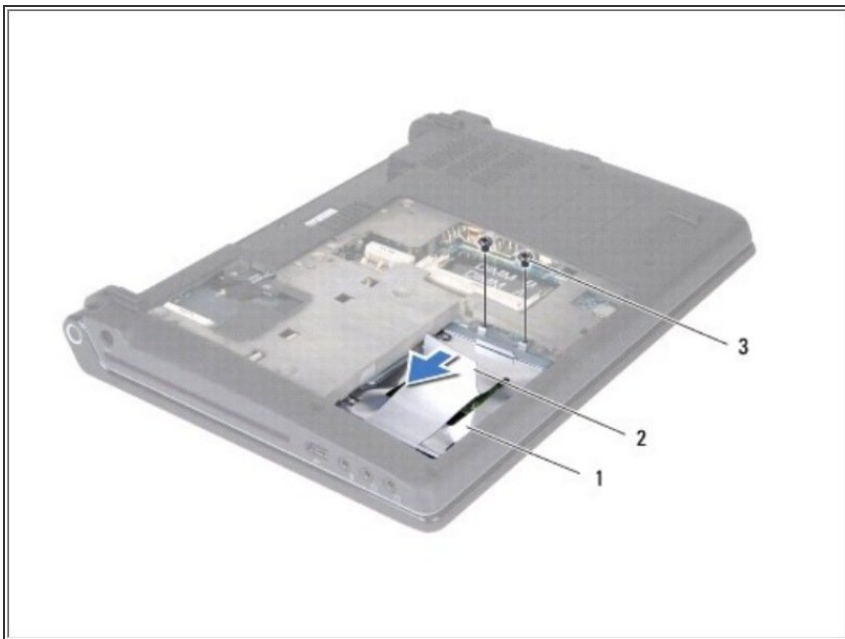
- Slide the battery release latch until it clicks into place.
- Slide the battery out of the battery bay.

## Step 2 — Base Cover



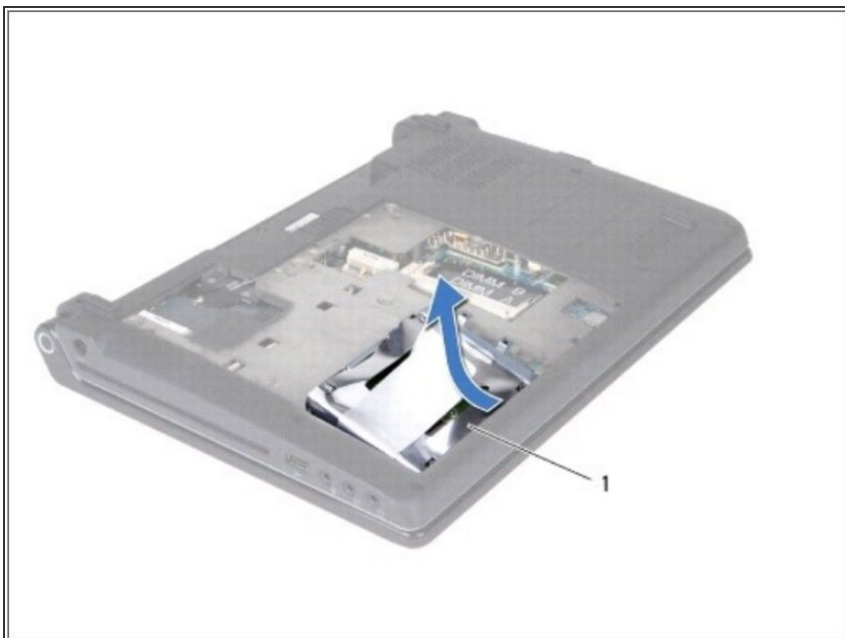
- Turn the computer over and loosen the six captive screws on the base cover.
- Lift the base cover off the computer.

## Step 3 — Hard Drive



- Remove the two screws that secure the hard drive to the computer base.
- Slide the hard drive away from the connector using the pull-tab.

## Step 4



- Tilt the hard drive by 45-degrees and lift it out of the computer base.

## Step 5



- Remove the four screws that secure the hard drive to the hard drive bracket.
- Lift the hard drive off the hard drive bracket.

To reassemble your device, follow these instructions in reverse order.