



Dell Studio 15 Power Button Board Replacement

The power button board is vital to whether or not the laptop will power on or off. When you push the power button, it actually pushes against the contacts of this board, causing the signal to tell the computer whether to be on or off. It is not hard to re

Written By: Julie

INTRODUCTION

Here is a step-by-step on how to replace the power board button in a Studio 15 computer. I did it with my Studio 15 1558. The longest part is the teardown and the putting it all back together. Installing the part is fairly easy. I also attached the manual for the computer in case you need more than what I provided here.



TOOLS:

- [Pro Tech Toolkit](#) (1)

Step 1 — Power Button Board



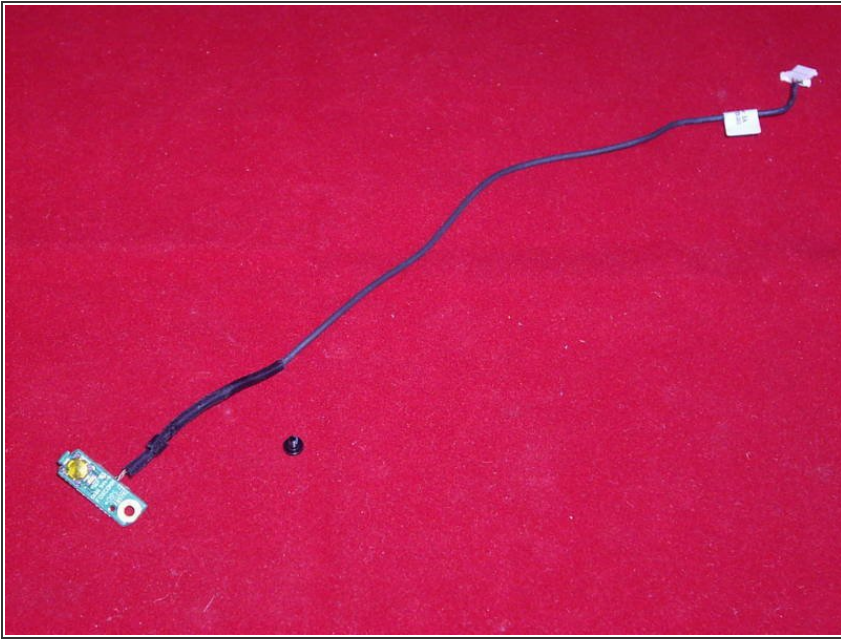
- The first thing to do is unplug the power and remove the battery.
- Use an antistatic wrist strap to prevent shocking the electronic components.
- Remove all the screws in the bottom of the computer, including the large cover that protects the ram and hard drive.
- Remove the hard drive by removing all four screws holding it in, push the drive toward the side of the base cover to separate the drive from the permanent connectors.
- Remove the RAM chips by separating the clips and pulling on the chips gently to remove them.
- Remove the screw under the hard drive and also remove the small screw in the battery compartment.
- Flip the laptop over and open the lid. Using a plastic or nylon scribe/spudger, pry of the black plastic trim that separates the keyboard from the palm rest.
- Remove the 2 screws that hold the keyboard in. Lift up on the white ribbon lock on the connector for the keyboard ribbon. Set the keyboard aside. Remove all the screws that hold down the base plate under the keyboard

Step 2



- Take your pry tool and pry off the silver palm rest from the base cover of the computer. Now you have access to all the connections on the motherboard.
- Pry off the laptop's screen bezel. Be careful not to pull on it or it will crack. It is kind of fragile in that respect. Set it aside.
- Your hinges are now exposed. Undo the screws that hold the screen part to the base part. Once loose, you should have the two separate pieces laying flat connected only by wires.
- Behind the power button is a small board. There is only one screw that holds it in place. Remove it. Pull the power button board loose and follow the wire down to the motherboard, removing it from the trench as you go. Remove the white connector that connects it to the board.
- Take the new power button board and attach it with the single screw back behind the power button. Reinsert the wire back into the trench the original one came out of, pushing it under the retaining clips as you go. Once down to where the motherboard is, reattach the white connector to its board connection.

Step 3



- Working in reverse order to put the computer back together, let's start with the palm rest. Push the silver palm rest back down over the base, making sure it connects well on all sides. It should click back into place and meet flush with the base.
- Reinsert the screws that hold the hinges in place locking the top and bottom of the computer together. Replace the screen bezel, snapping it back in place all the way around the screen.
- Replace all the base plate screws. Make sure all ribbon connections and wired connections are connected. There is one right above the touchpad that controls the touchpad. There is also a white connector on the left side of the base plate that connects the speakers.
- Reinsert the ribbon connector for the keyboard, securing it by pushing down on the white bar ribbon lock. Fit the keyboard bottom tabs back into their corresponding slots and then reattach the keyboard with the two retaining screws at the top of the keyboard on each side.

- Replace the black bezel that covers the speakers and separates the keyboard from the silver palm rest. It should snap back into place as well all the way around.
- Close the lid and flip the laptop over. Be sure to snap the parts together on the back side of the laptop. This can only be done from this vantage point.
- Reinsert the screw into the battery compartment and then reinsert all base screws.
- Reinstall the RAM, carefully lining up the notches and clips and pushing them into place. Reinstall the hard drive with the 4 screws that hold it in place. Replace the base cover that covers the hard drive and RAM, tightening all 3 screws. Replace the battery & plug in power. Push power button. PC should power up. All done. Congratulations!

To reassemble your device, follow these instructions in reverse order.