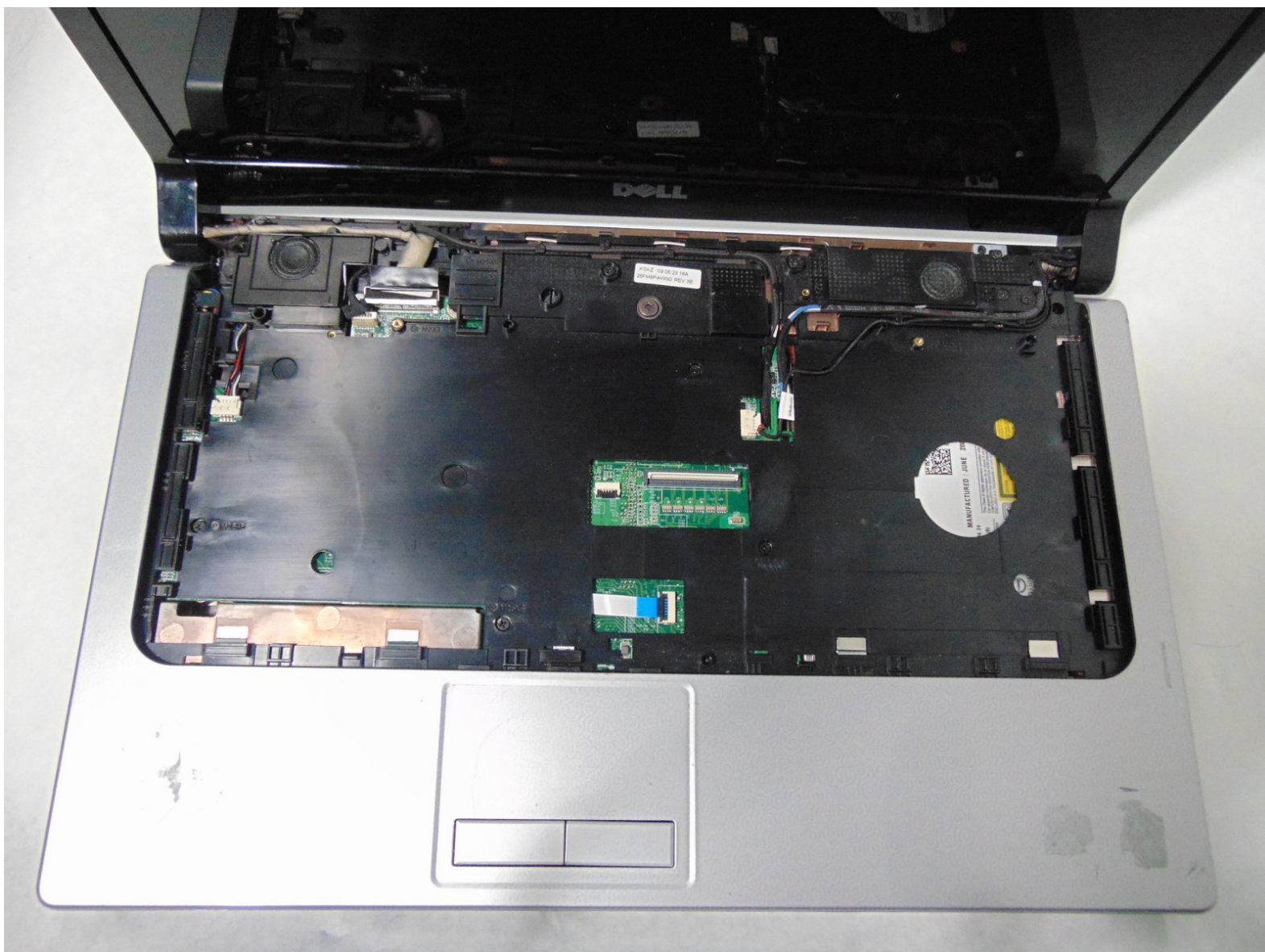




# Dell Studio 1555 Keyboard Replacement

Keyboard replacement guide for the Dell Studio 1555

Written By: Hunter Tuck



---

## INTRODUCTION

You may need to replace your keyboard due to failure. You will need a Phillips 1 screwdriver for this guide.



### TOOLS:

- [Phillips #1 Screwdriver](#) (1)
-

## Step 1 — Battery



- Turn off and unplug the laptop.
  - ⚠ Failure to properly turn off device before handling the battery could result in electrical shock.
- Flip the laptop so the underside is facing up with the battery closest to you.

## Step 2



- Slide the locking switch to the left to release the battery.

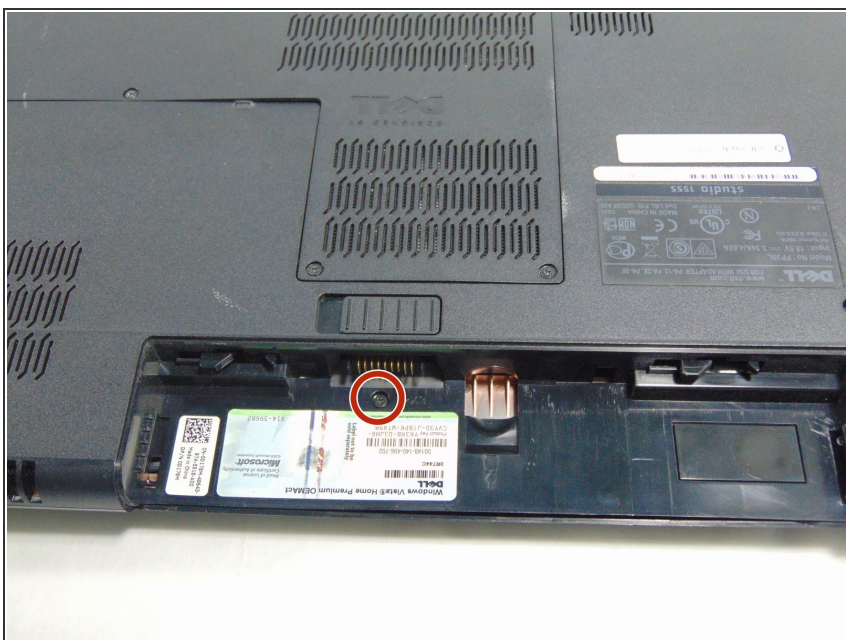


## Step 3



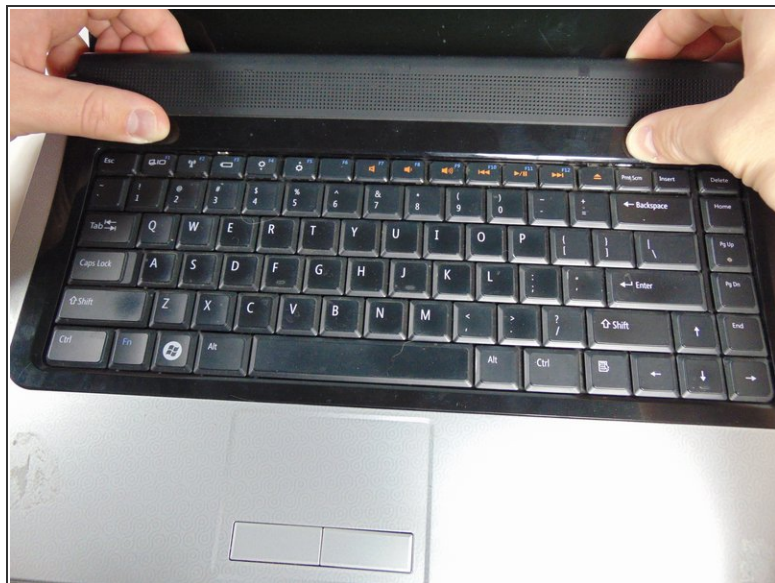
- Gently pull the battery away from the device.

## Step 4 — Keyboard



- Remove the single 3mm screw underneath the battery with a #1 Phillips screw driver, which holds the media control cover.

## Step 5



- Flip the laptop over and flatten it out as much as possible.
- Unsnap the media control cover from the laptop starting nearest to the display.

## Step 6



- Remove the two 3mm screws with a #1 Phillips screwdriver, holding down the keyboard.



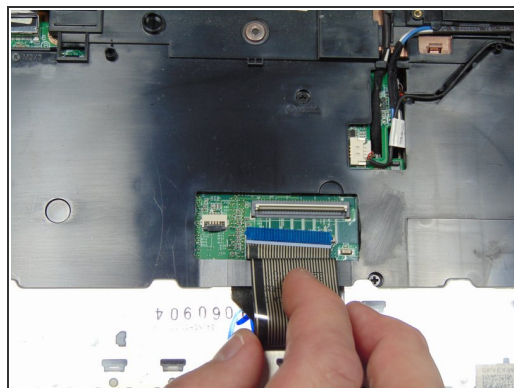
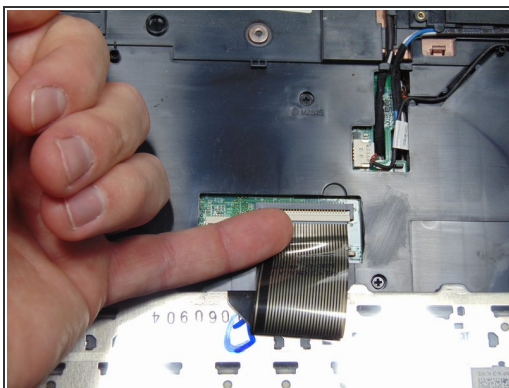
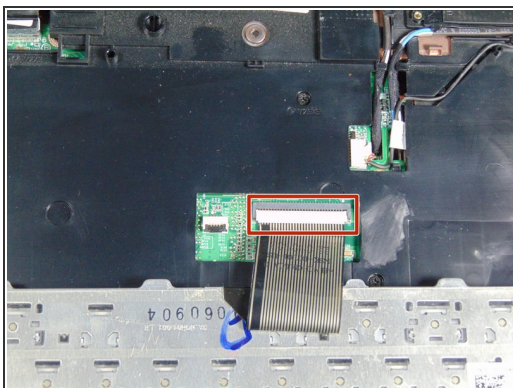
## Step 7



- Slowly lift the keyboard away from the base.

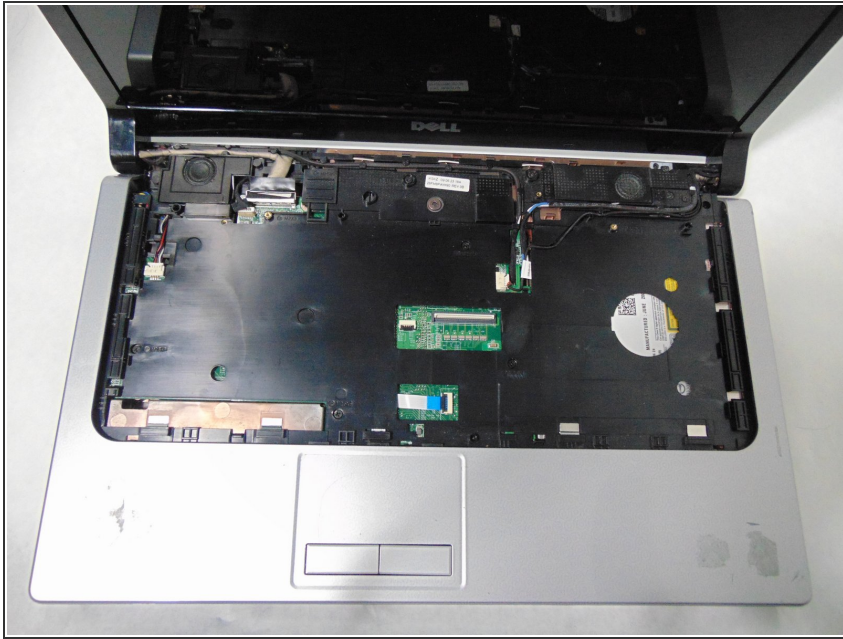
⚠ If you pull too hard you risk breaking the keyboard cable connector from the motherboard.

## Step 8



- Flip up the black tab on the keyboard ZIF connector and unplug the cable.

## Step 9



- Remove the keyboard

To reassemble your device, follow these instructions in reverse order.