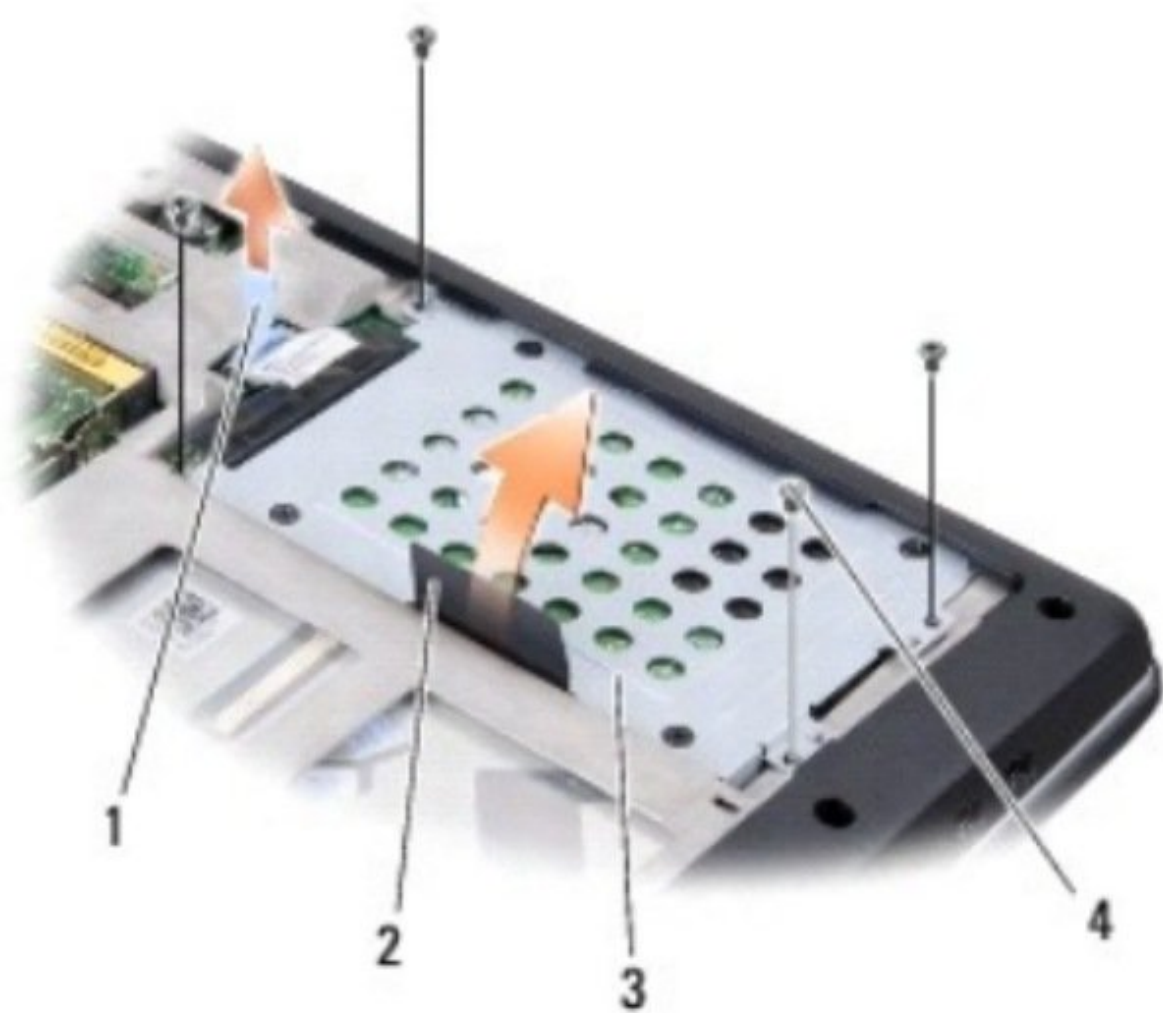




# Dell Studio 1735 Hard Drive Replacement

Written By: Johnathan Hammond

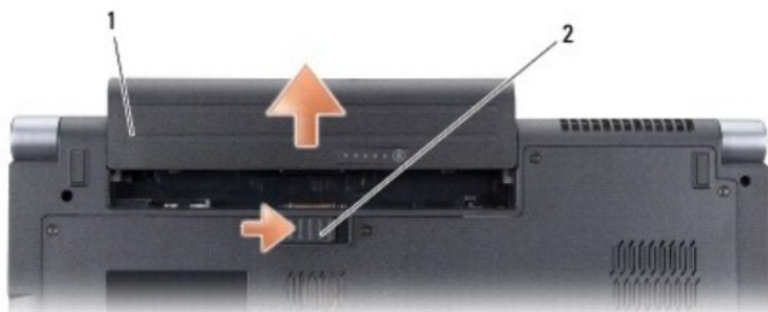




## TOOLS:

- [Phillips #0 Screwdriver](#) (1)
-

## Step 1 — Battery



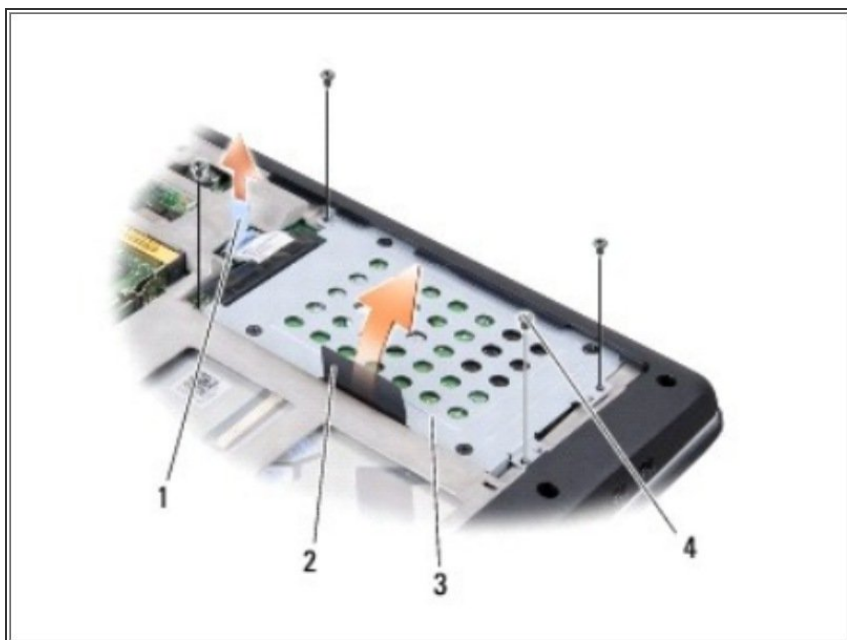
- Slide and click the battery latch release.
- Slide the battery out of the battery bay.

## Step 2 — Base Cover



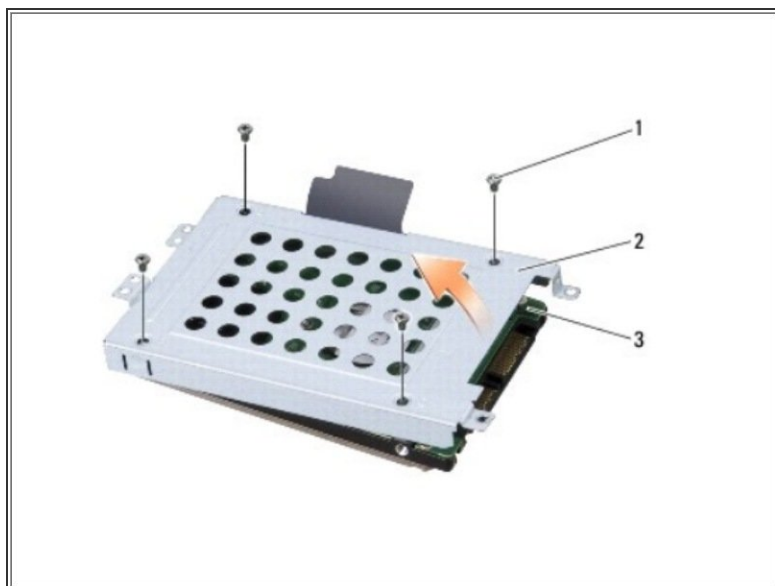
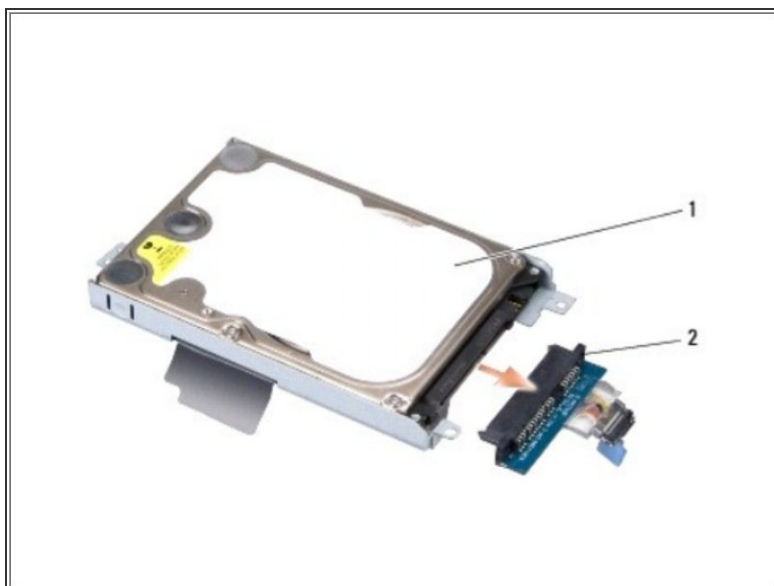
- Loosen the eight captive screws on the base cover and lift the cover off the computer at an angle as shown in the figure.

## Step 3 — Hard Drive



- Remove the four screws securing the hard drive assembly to the computer base.
- Pull the blue pull-tab on the cable attached to the system board to disconnect the cable.
- Pull the black pull-tab to lift the hard drive assembly out of the computer.

## Step 4



- Pull the interposer to detach it from the hard drive.
- Remove the four M3 x 3-mm screws securing the hard drive cage to the hard drive.
- Lift the hard drive cage off the hard drive.

To reassemble your device, follow these instructions in reverse order.