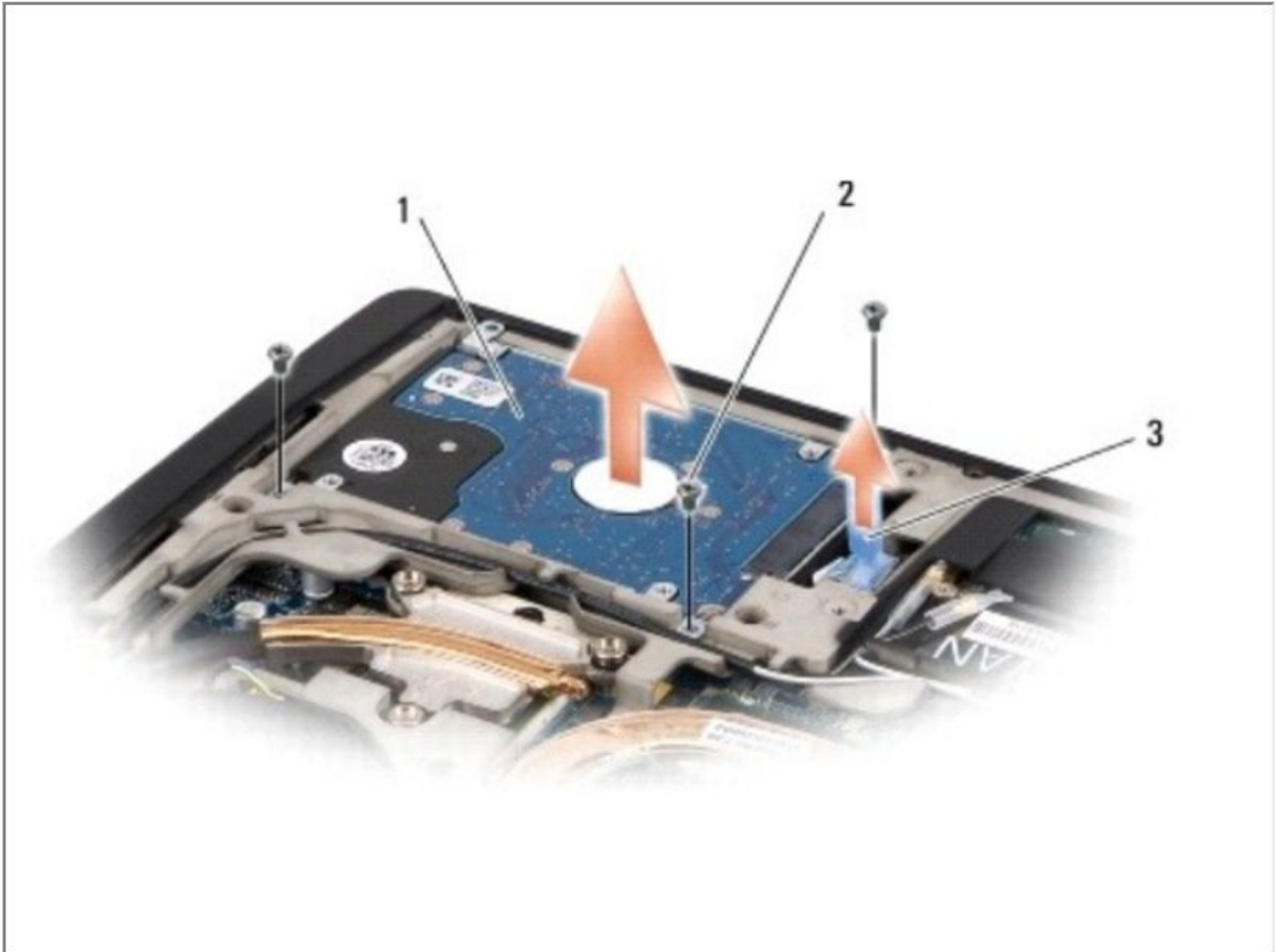




Dell Studio XPS 1645 Hard Drive Replacement

Written By: Johnathan Hammond

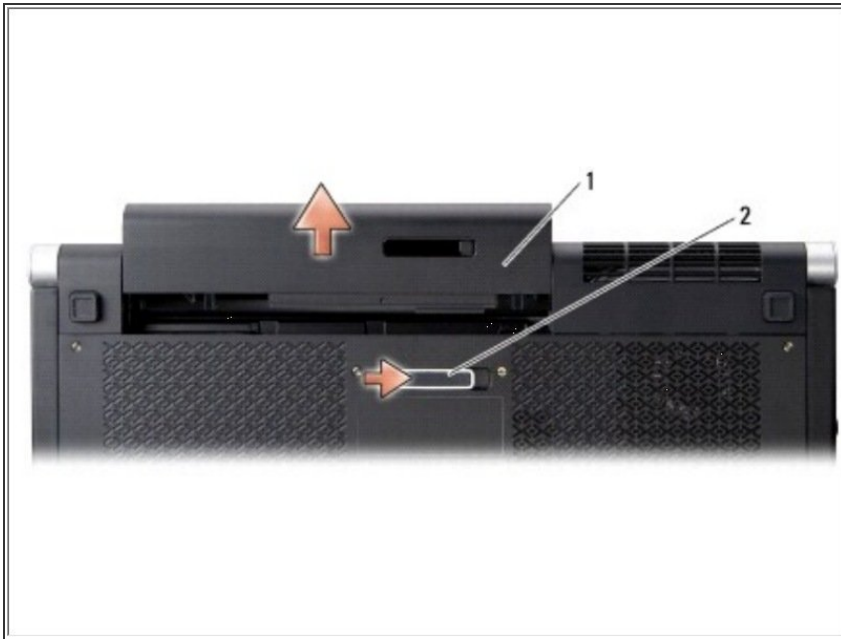




TOOLS:

- [Phillips #0 Screwdriver](#) (1)
-

Step 1 — Battery



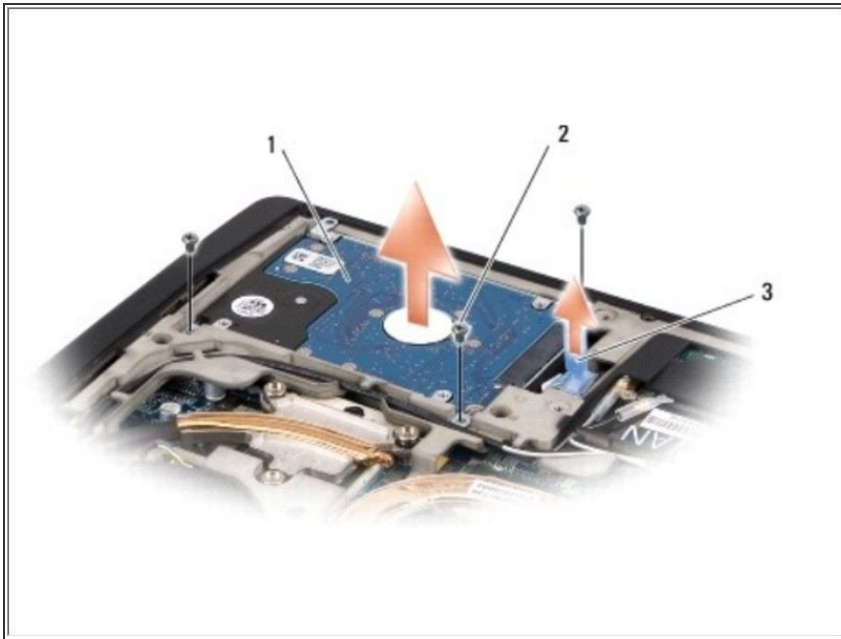
- Slide the battery release latch to the side. {2}
- Slide the battery out of the battery bay. {1}

Step 2 — Base Cover



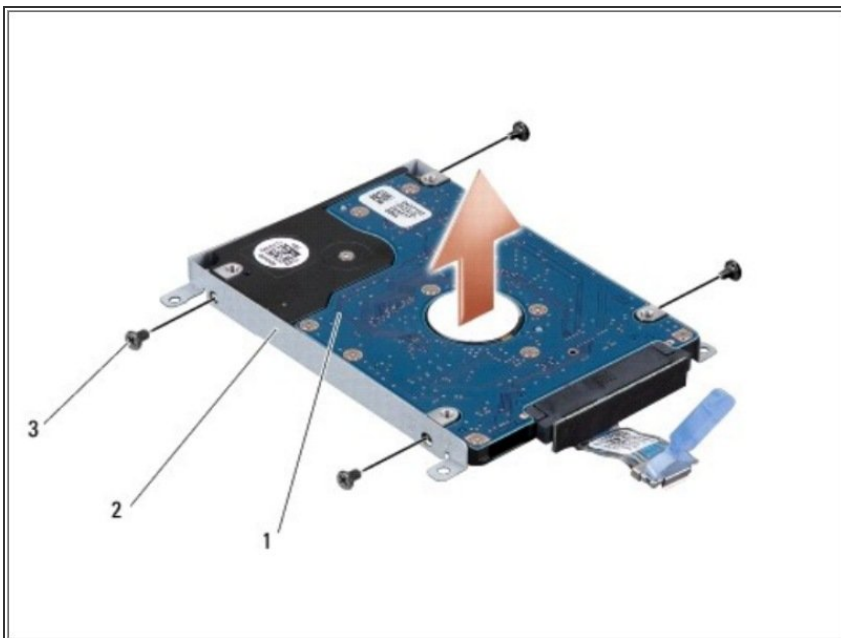
- Loosen the ten captive screws on the base cover and lift the cover off the computer at an angle as shown in the figure.

Step 3 — Hard Drive



- Remove the three screws securing the hard drive assembly to the computer base.
- Pull the blue pull-tab to disconnect the hard drive assembly from the system board connector.
- Lift the hard drive assembly out of the computer base.

Step 4



- Remove the four screws that secure the hard drive bracket to the hard drive and remove the bracket.

Step 5



- Pull the interposer to disconnect it from the hard drive.

To reassemble your device, follow these instructions in reverse order.