



Dell VRC100-R Touchpad Replacement

How to replace your touchpad to let your Dell VRC100-R respond to your directions.

Written By: Steven Pineda



INTRODUCTION

If your Dell VRC100-R controller does not respond to your touchpad movements, you have come to the right place. To follow this guide, you will need a plastic opening tool and a Phillips #0 screwdriver head. You will not need to do any difficult steps, but open the ZIF connector carefully.



TOOLS:

- [iFixit Opening Tools](#) (1)
 - [Phillips #0 Screwdriver](#) (1)
-

Step 1 — Battery



- Orient your controller so that the black ring is on the bottom and the buttons are facing away from yourself.
- Place your thumb on the small arrow that is on the controller's battery cover and firmly push upwards.
- Slide the cover off and separate it from the controller.

Step 2



- Remove the right battery by pushing the positive end down and pulling the battery out toward yourself.
- Repeat the procedure for the left battery.

Step 3 — Joystick



- Hold the joystick down with your left thumb to make space for the plastic opening tool.
- Insert the plastic opening tool into the circle above the joystick and pry upwards to lift the front panel.
- Slide the plastic opening tool around the perimeter until you can lift the front panel.
- ❗ You may hear a popping noise when you pry off the front panel.

Step 4



- Grab the joystick and pull away from the controller to remove it.

Step 5 — Touchpad



- Remove one 6mm Phillips #0 screw.

Step 6



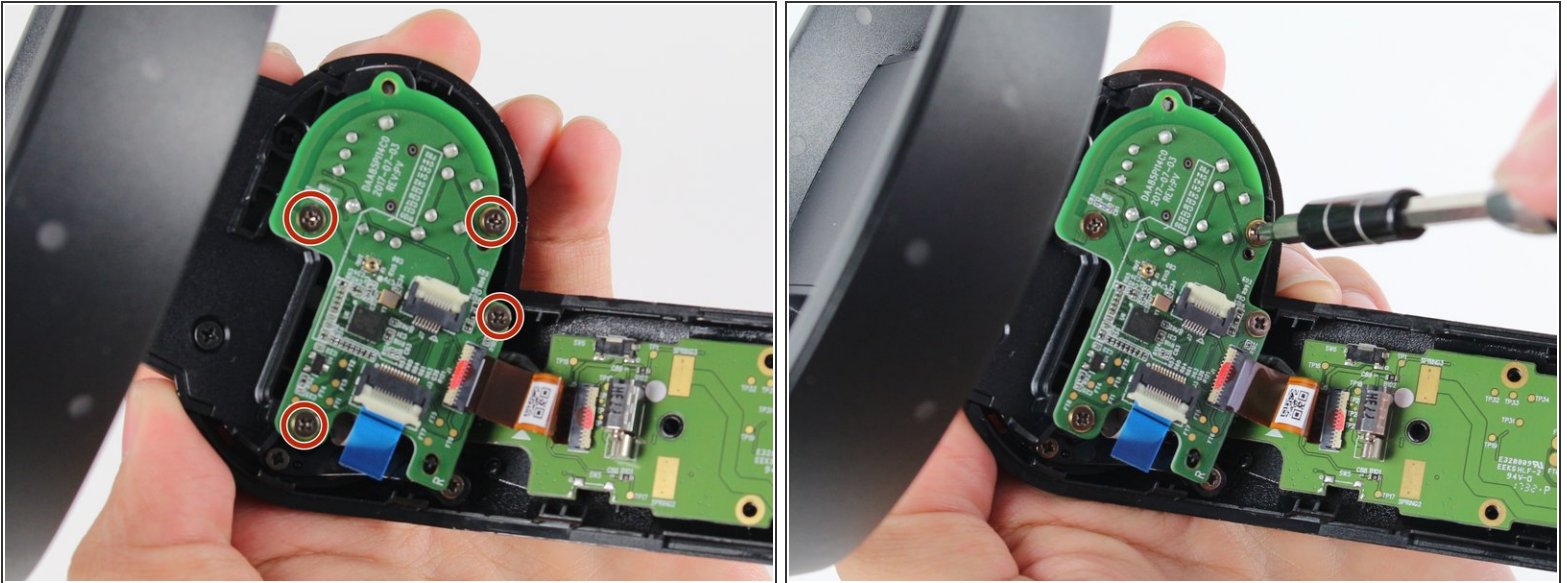
- Turn your controller over and orient it so that the thin side is on the top.
- Remove four 4mm Phillips #0 screws.

Step 7



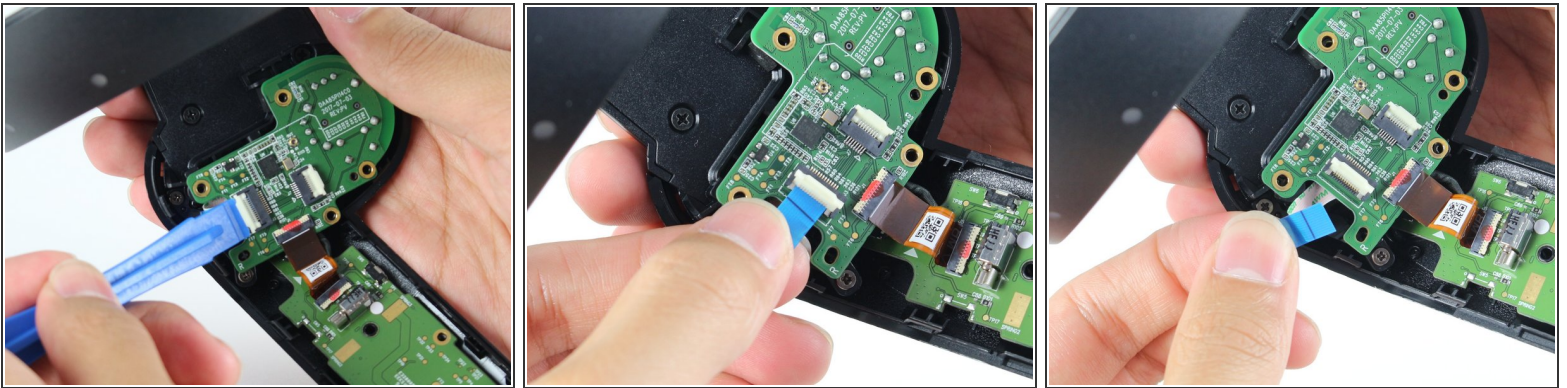
- Turn your controller 90 degrees clockwise and insert a plastic opening tool into the crease of the back panel.
- Push down on the end of the plastic opening tool closest to you to lift the panel up.
- Slide the plastic opening tool around the perimeter of the back panel until you can remove it.
- ⓘ You may hear loud popping noises as the back panel separates from the controller.

Step 8



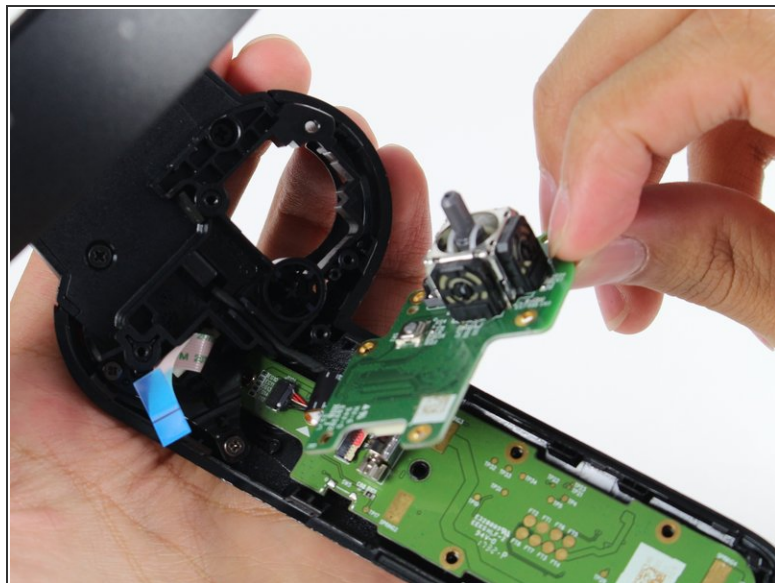
- Remove four 4mm Phillips #0 screws.

Step 9



- Use the tip of a plastic opening tool or your fingernail to gently flip-up the white locking flap.
 - ⚠ Make sure to only lift the flap and not the connector socket because the socket easily breaks off.
- Grab the blue cable and pull away from the socket.
- ☑ To reinstall, insert the blue cable into the connector and close the flap on the black line.

Step 10



- Place two fingers on the perimeter of the daughterboard and fold it down along the orange cable.

Step 11



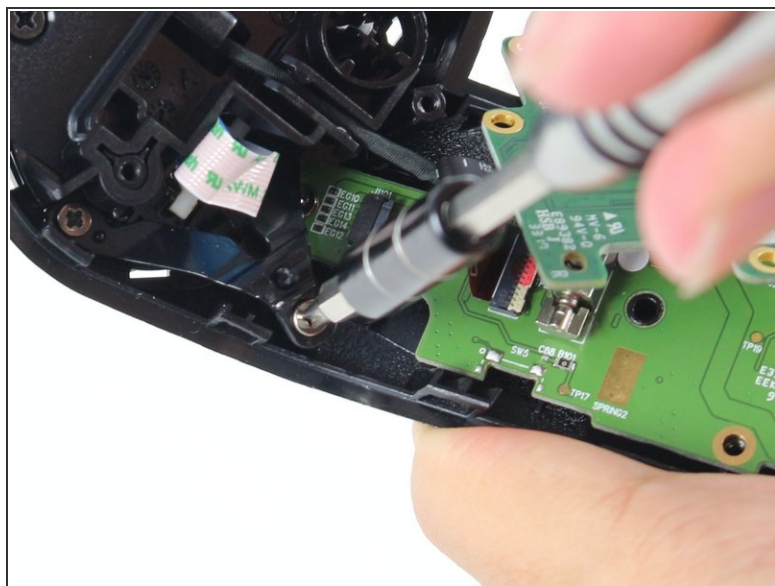
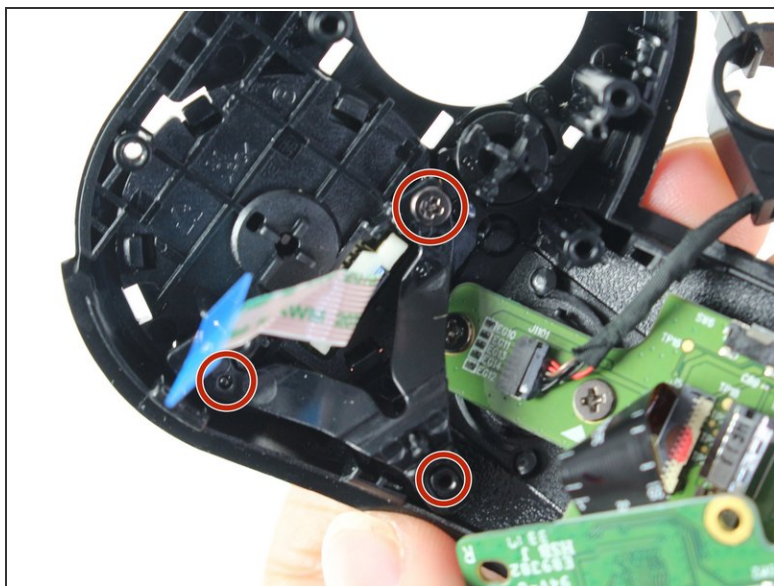
- Remove two black 6mm Phillips #0 screws.

Step 12



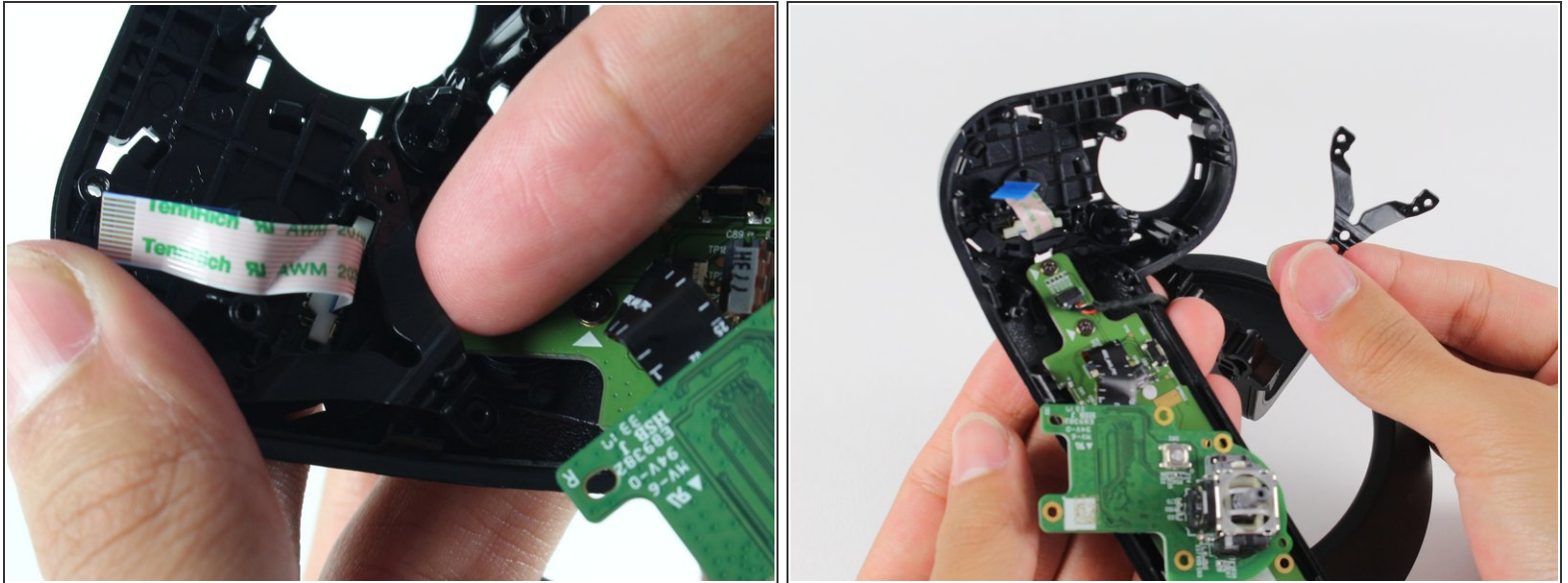
- Pinch the black ring on the top of your controller and pull toward yourself to disconnect it.

Step 13



- Remove three 3mm Phillips #0 screws.

Step 14



- Insert your finger underneath the black plastic "V" and scoop up to remove it.

Step 15



- Place your thumb on the outer edge of the touchpad on the other side of the controller.
- Push toward the center of the circle to get your fingernail underneath the touchpad then scoop away from yourself.
- ❗ You can see the detachable black flaps underneath the touchpad along the perimeter.
- Turn your controller over and remove the touchpad.

To reassemble your device, follow these instructions in reverse order.