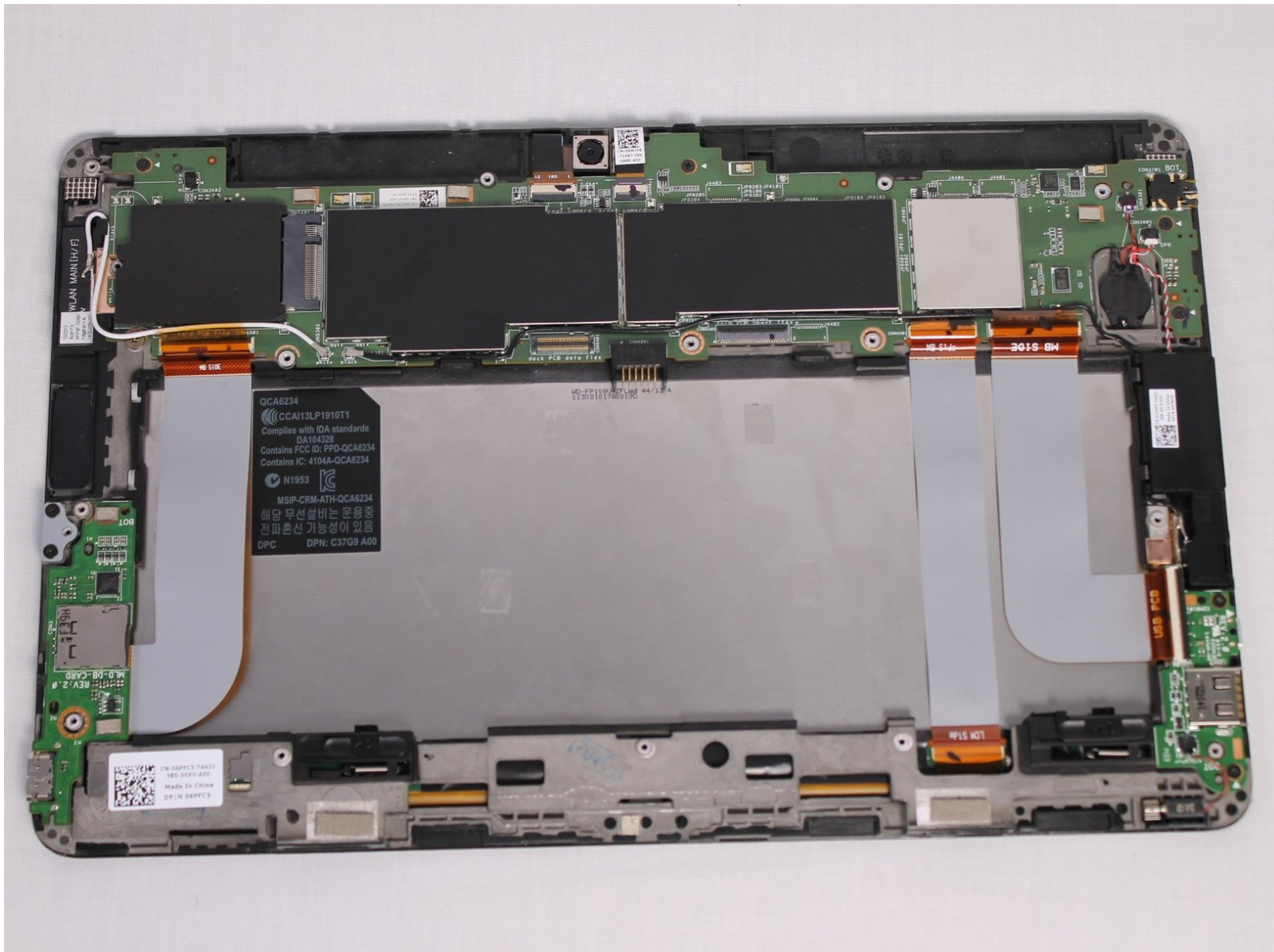




Dell Venue 11 Pro Speakers Replacement

Replace damaged/broken speakers

Written By: Carolina Gushi



INTRODUCTION

This guide will teach you how to replace your speakers. You will need to complete the battery and frame replacement guides before proceeding to the speakers.



TOOLS:

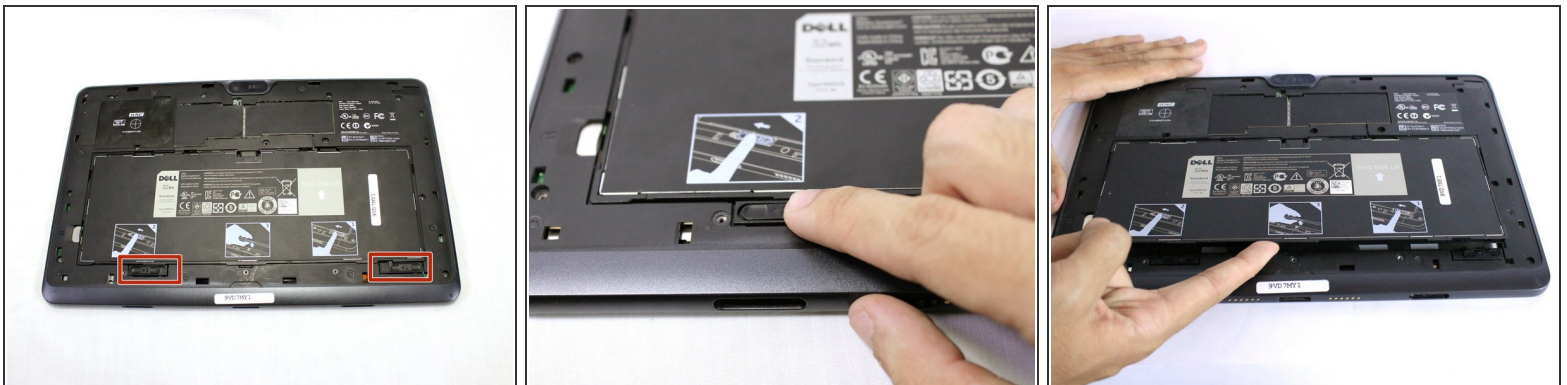
- [Phillips #000 Screwdriver](#) (1)
 - [Spudger](#) (1)
 - [Pin Punch](#) (1)
 - [iFixit Opening Tools](#) (1)
 - [Tweezers](#) (1)
-

Step 1 — Battery



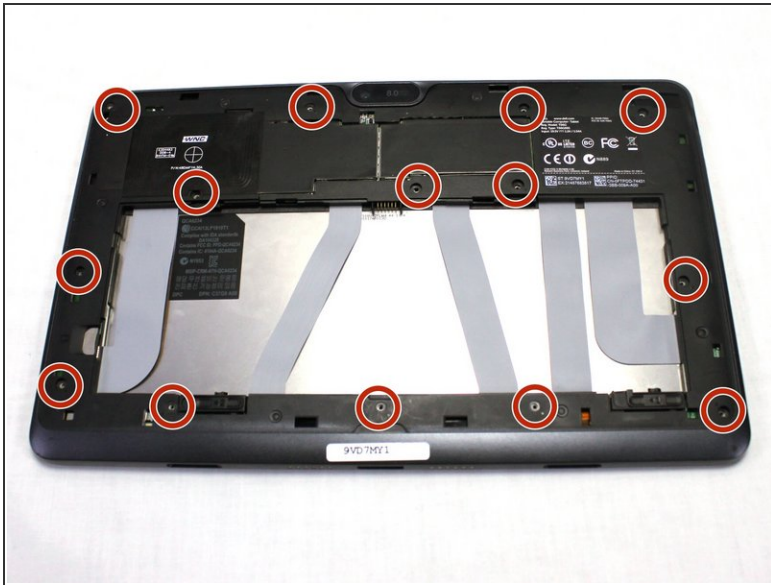
- Turn your device over to the backside. On the notch at the bottom portion of the tablet, use your fingers to lift up the back cover.

Step 2



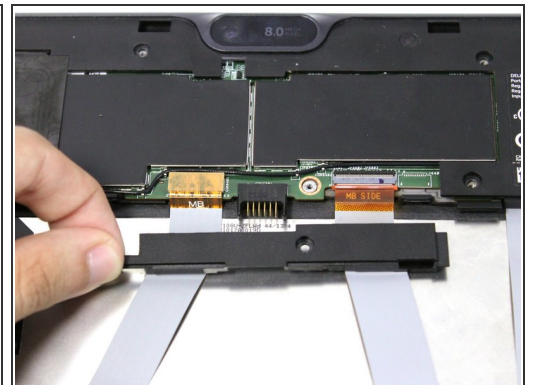
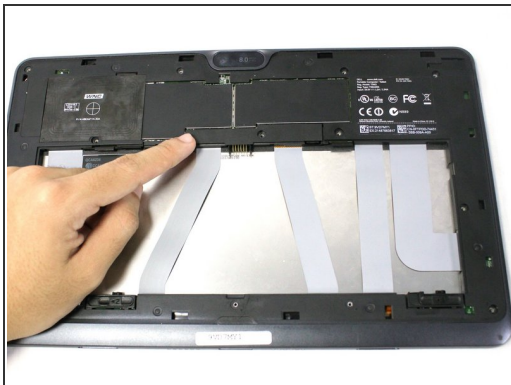
- Below the battery pack, there are two lock mechanisms. Push EACH lock to the LEFT until it makes a click noise. Lift the battery from the bottom up and remove.

Step 3 — Frame



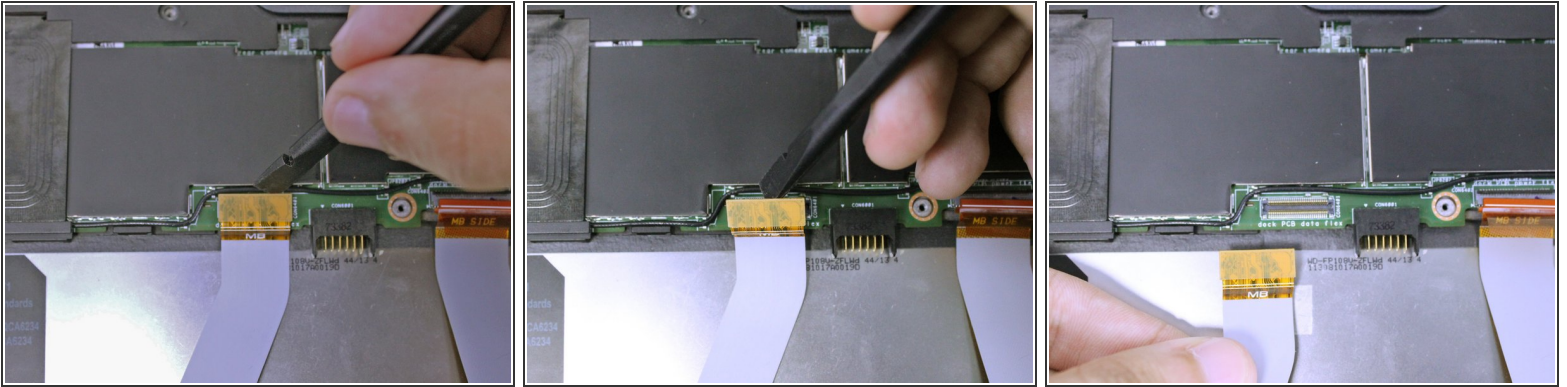
- Use your Philips #000 screwdriver to unscrew the fourteen 2.5 mm screws marked on the tablet.
- ⓘ These screws are extremely small. Place the screws aside in a container or on your magnetic mat to prevent accidental loss.

Step 4



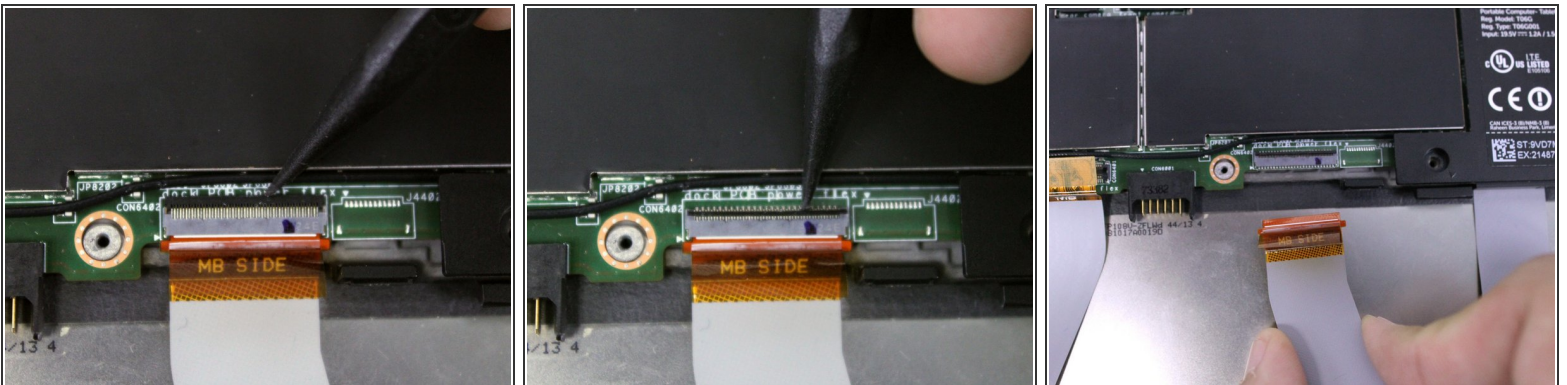
- Slide the cover on the two middle ribbon cables out to remove it. It should uncover the orange cable connectors.

Step 5



- To disconnect the left ribbon cable from the motherboard, place the flat end of your spudger under the edge of the [pop connector](#) and pry the connector straight up.
- ❗ The two ribbon cables connect the keyboard attachment ports to the motherboard. Damage to either cables can induce problems with the Dell mobile keyboard.

Step 6



- The right ribbon cable has a [ZIF connector](#). Use the flat end of your spudger to lift up the small locking flap, then pull out the cable.
- ⚠ Pulling the ribbon cable out before unlocking the connector can potentially damage the cable.

Step 7



- There are adhesive strips between the device and the two ribbon cables we disconnected. Pull each cable away from the device just enough to break the adhesive bonds.

Step 8



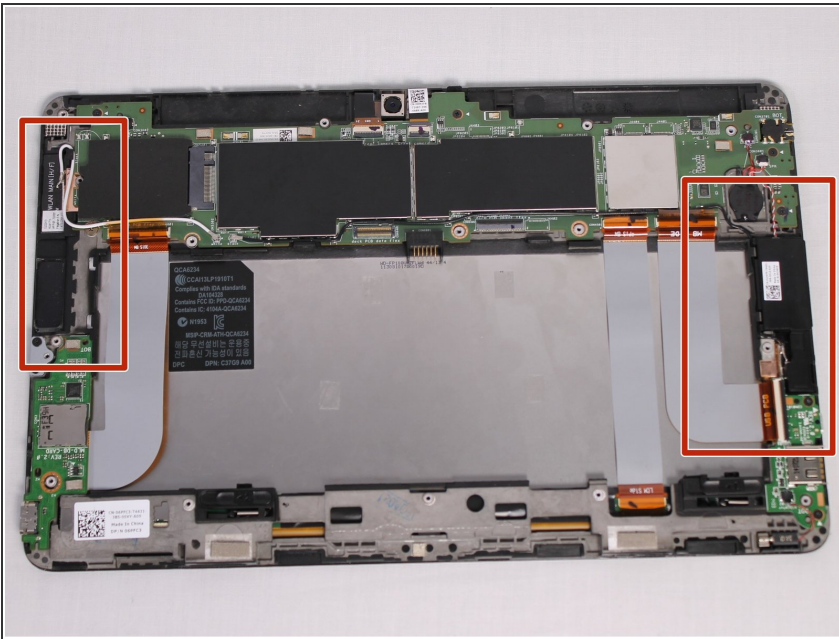
- Use your pin punch driver to push into the hole on the sim card, then pull out the sim tray.

Step 9



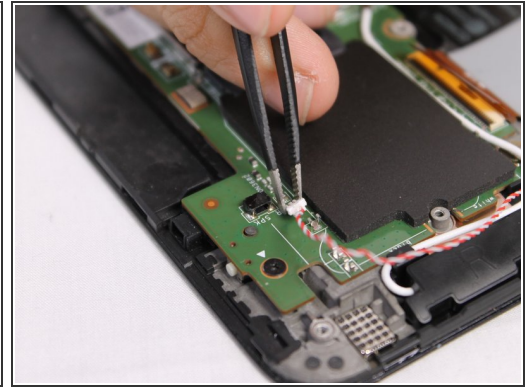
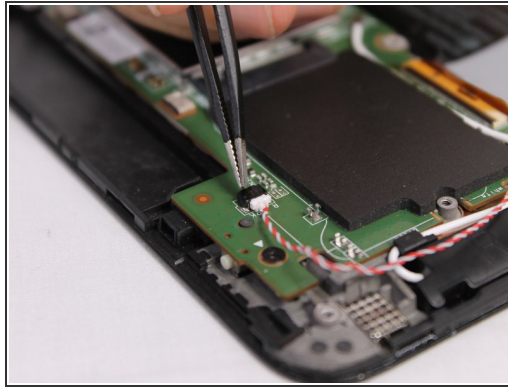
- Insert your plastic opening tool between the screen and frame, and run the tool around the edges to separate the frame from the tablet.

Step 10 — Speakers



- Locate the right and left speakers to be replaced. For this guide, we will start with the left speaker, then the right speaker.
- ⓘ If you are replacing the motherboard by itself, then skip steps 17 and 19.

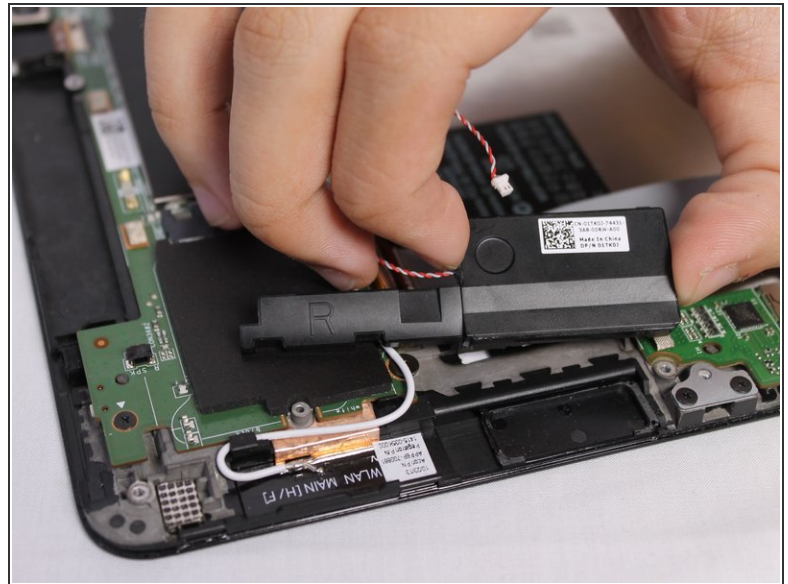
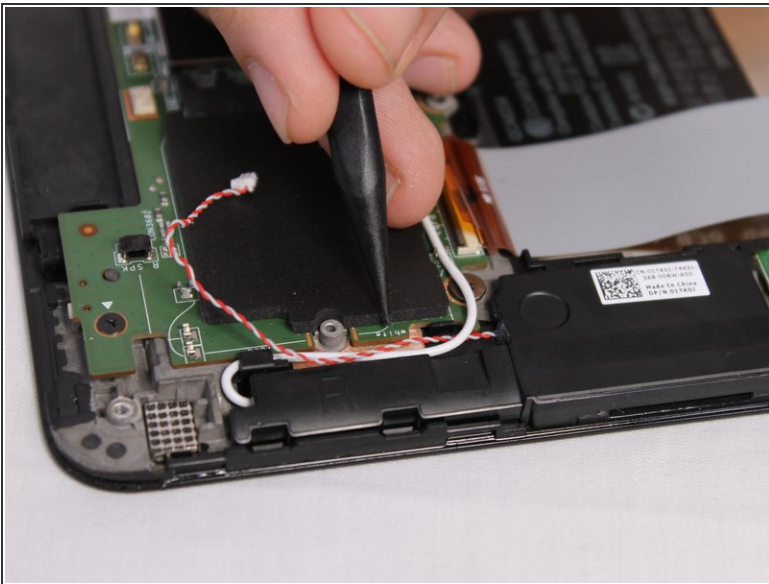
Step 11



- Using a pair of tweezers, detach the red and white cable connector from the circuit board.

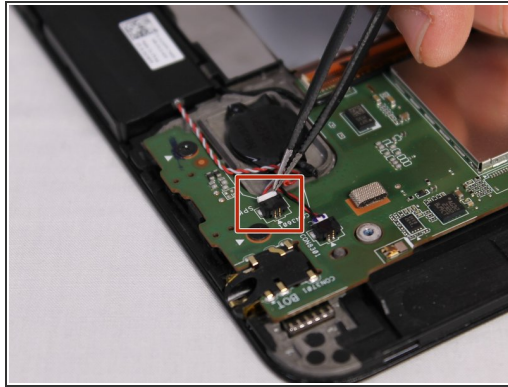
i The laptop is rotated 130 degrees counterclockwise for better viewing.

Step 12




- Once the cable has been detached, use your fingers to lift the right speaker upwards to remove it.

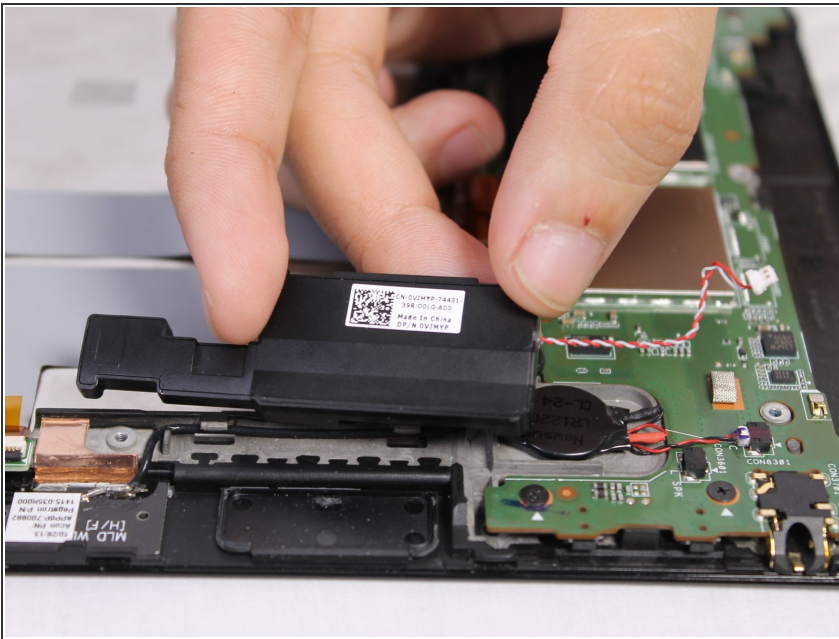
Step 13



- On the right side, use a pair of tweezers to detach the red and white cables from the connector.

 This device is rotated 130 degrees clockwise for better viewing.

Step 14



- Lift the right speaker upwards using your fingers to remove it.

To reassemble your device, follow these instructions in reverse order.