



Dell Venue 11 Pro USB Port Replacement

This guide will help you replace a damaged/broken USB Port of a Dell Venue 11 Pro.

Written By: Tom Nguyen



INTRODUCTION

If you typically find yourself using the USB Port of your Dell Venue 11 Pro, then the port on your device might wear out sooner than you think. Fortunately, we've made a relatively easy guide you can follow to replace your USB Port. First, you will need to follow the battery and frame replacement guides before working on the USB port replacement.



TOOLS:

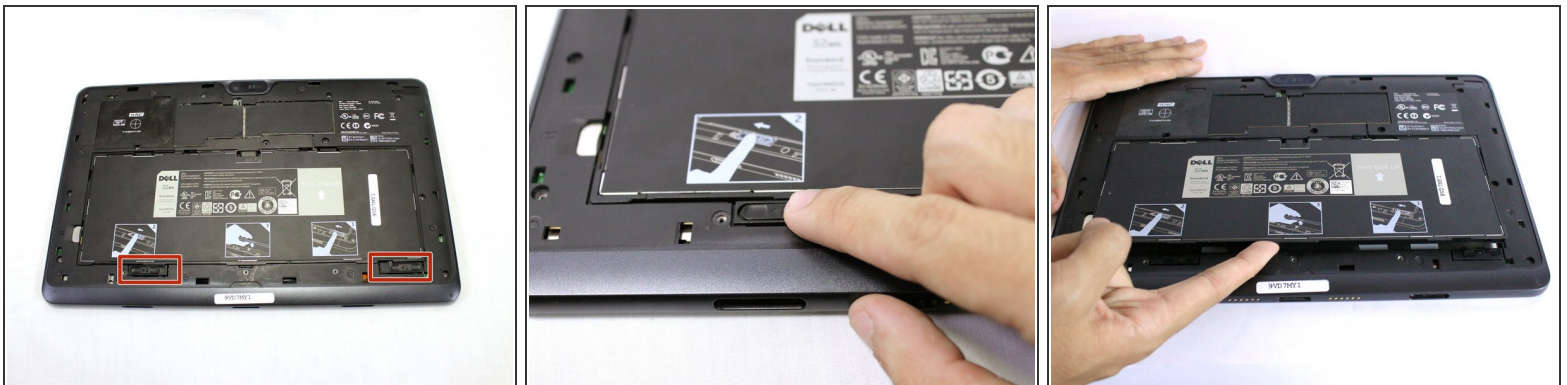
- [Phillips #000 Screwdriver](#) (1)
 - [Spudger](#) (1)
 - [Pin Punch](#) (1)
 - [iFixit Opening Tools](#) (1)
-

Step 1 — Battery



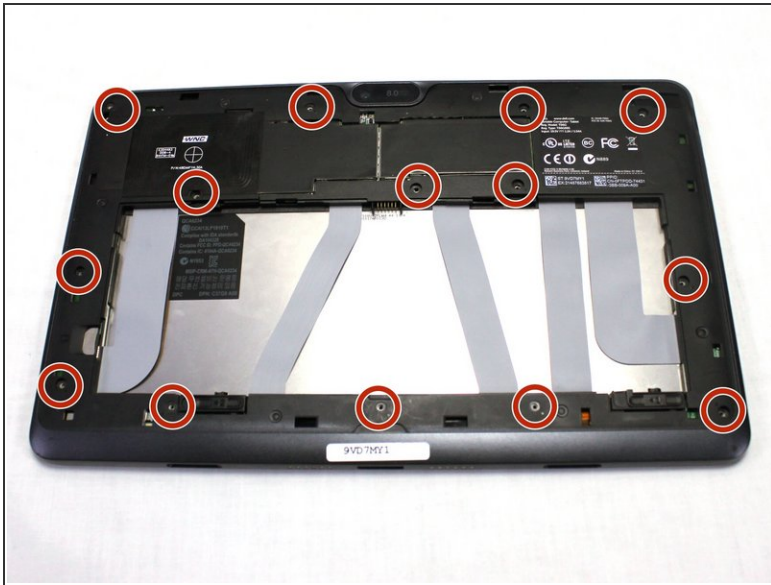
- Turn your device over to the backside. On the notch at the bottom portion of the tablet, use your fingers to lift up the back cover.

Step 2



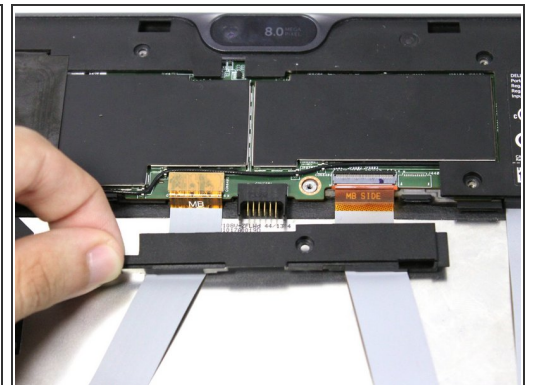
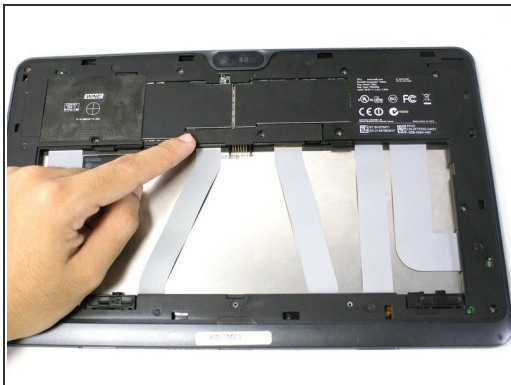
- Below the battery pack, there are two lock mechanisms. Push EACH lock to the LEFT until it makes a click noise. Lift the battery from the bottom up and remove.

Step 3 — Frame



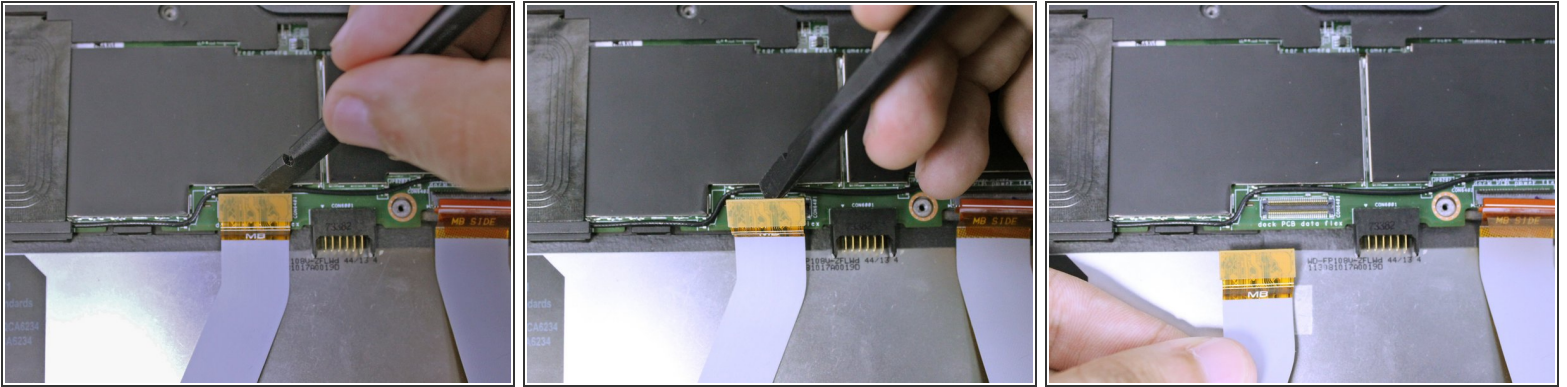
- Use your Philips #000 screwdriver to unscrew the fourteen 2.5 mm screws marked on the tablet.
- ⓘ These screws are extremely small. Place the screws aside in a container or on your magnetic mat to prevent accidental loss.

Step 4



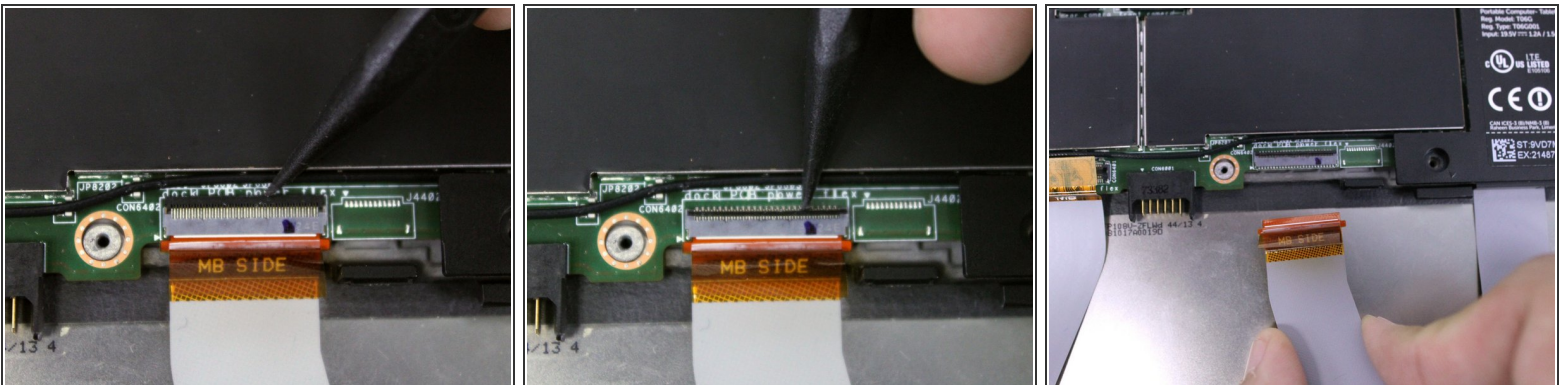
- Slide the cover on the two middle ribbon cables out to remove it. It should uncover the orange cable connectors.

Step 5



- To disconnect the left ribbon cable from the motherboard, place the flat end of your spudger under the edge of the [pop connector](#) and pry the connector straight up.
- ❗ The two ribbon cables connect the keyboard attachment ports to the motherboard. Damage to either cables can induce problems with the Dell mobile keyboard.

Step 6



- The right ribbon cable has a [ZIF connector](#). Use the flat end of your spudger to lift up the small locking flap, then pull out the cable.
- ⚠ Pulling the ribbon cable out before unlocking the connector can potentially damage the cable.

Step 7



- There are adhesive strips between the device and the two ribbon cables we disconnected. Pull each cable away from the device just enough to break the adhesive bonds.

Step 8



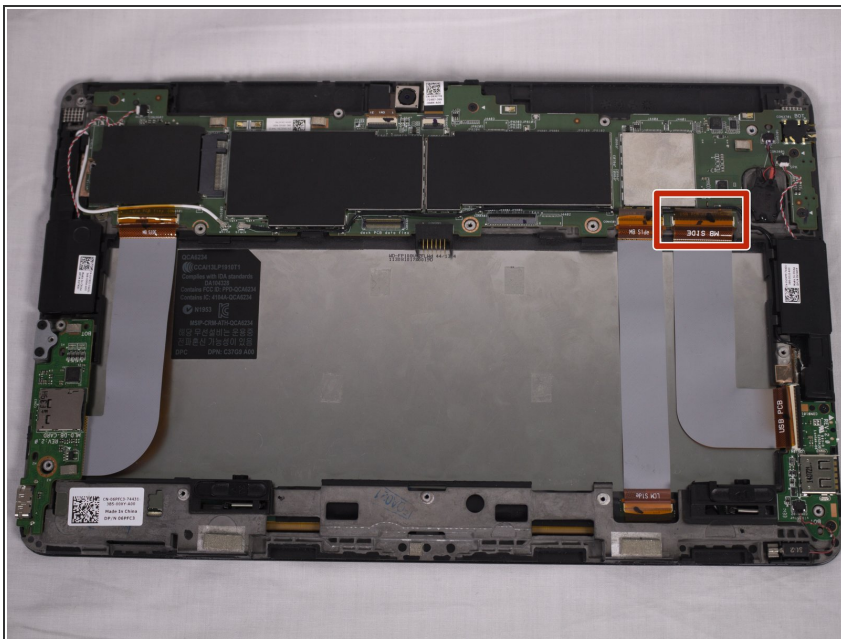
- Use your pin punch driver to push into the hole on the sim card, then pull out the sim tray.

Step 9



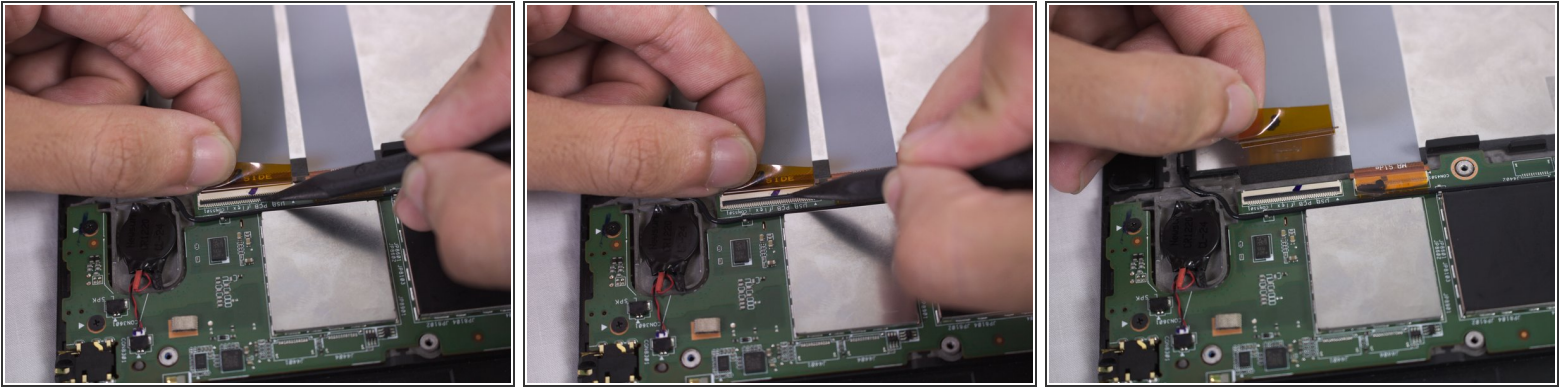
- Insert your plastic opening tool between the screen and frame, and run the tool around the edges to separate the frame from the tablet.

Step 10 — USB Port



- Start by removing the top [ZIF](#) USB ribbon connector
- ⓘ If you are replacing the motherboard by itself, then skip steps 23, 24, and 25.

Step 11



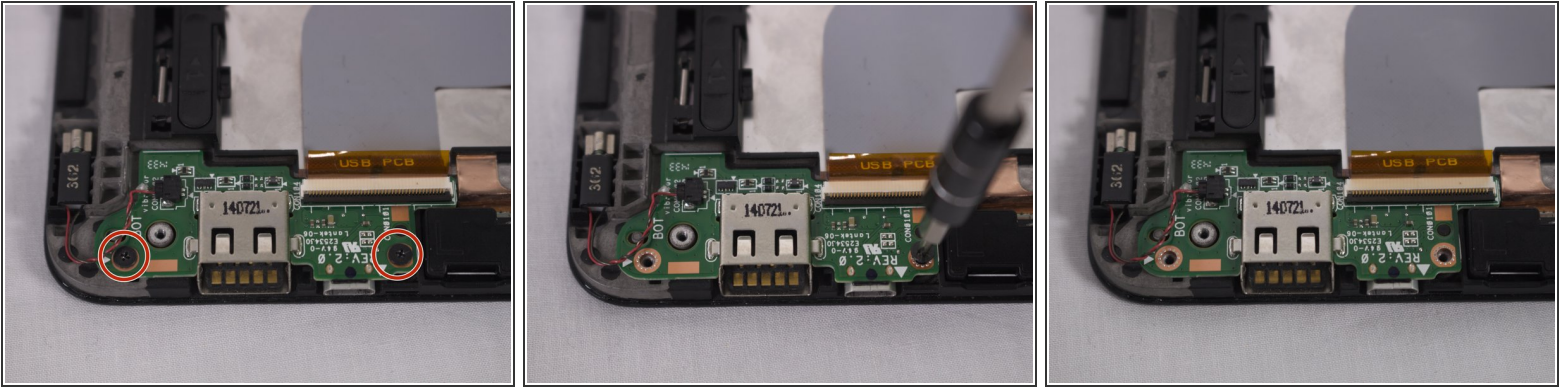
- To remove the ribbon cable, move the black retainer upwards. Then pull the ribbon cable rearwards to remove it.

Step 12



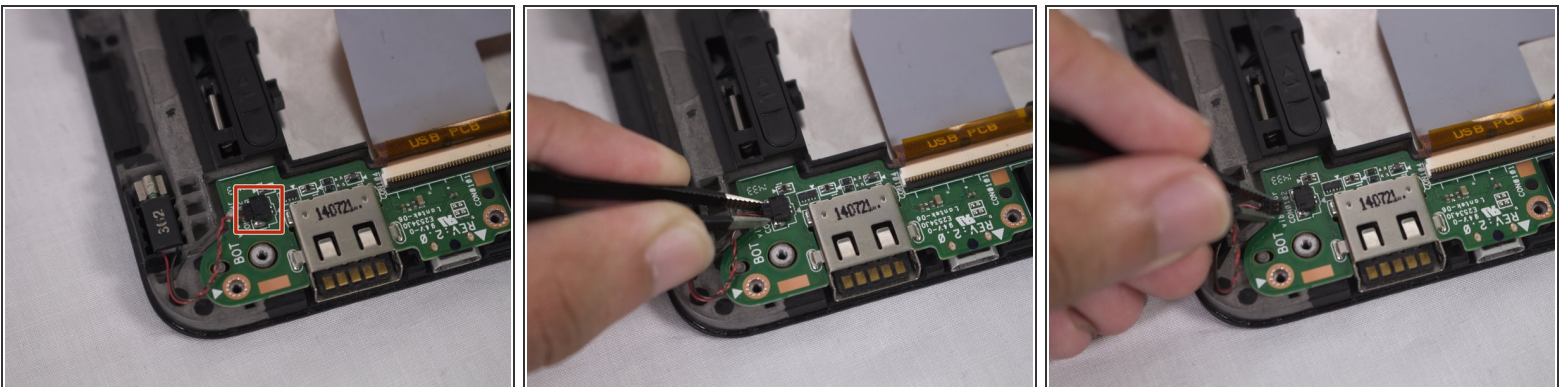
- You must then remove the ribbon cable connected to the USB port located here.

Step 13



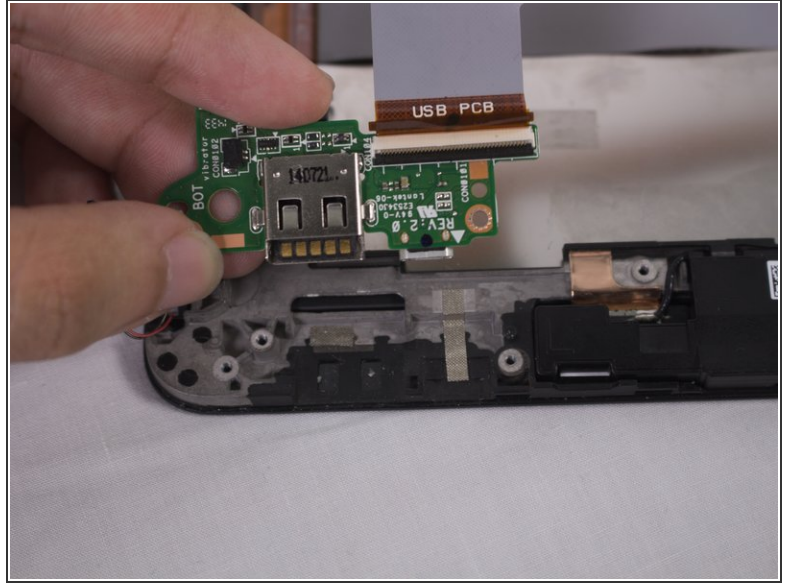
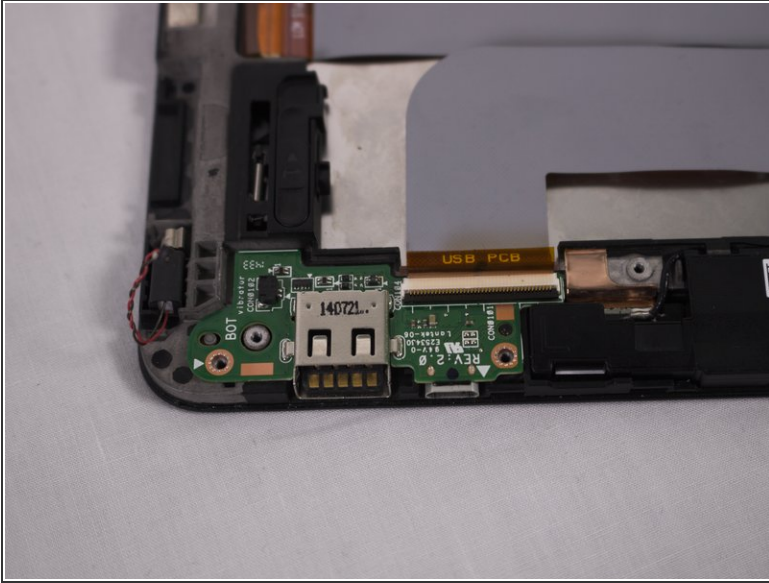
- Using a Philips #000 screwdriver remove the two 2.5 mm screws indicated.

Step 14



- Using a pair of tweezers disconnect the connector from the circuit board

Step 15



- After disconnecting all the pieces, remove the USB port circuit board with your fingers

To reassemble your device, follow these instructions in reverse order.