



# Dell Venue 7 Motherboard Replacement

This guide will show you how to replace the Dell Venue 7 motherboard.

Written By: Stephen Rousseau



---

## INTRODUCTION

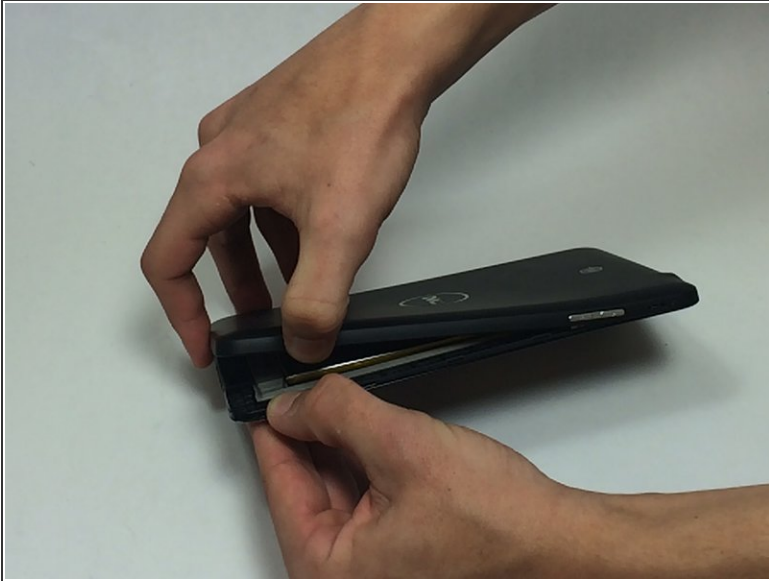
Many components are connected to the motherboard so confirm that all of the components work before you decide to replace the whole motherboard.

---

### TOOLS:

- [Spudger](#) (1)
  - [Tweezers](#) (1)
  - [Phillips #00 Screwdriver](#) (1)
-

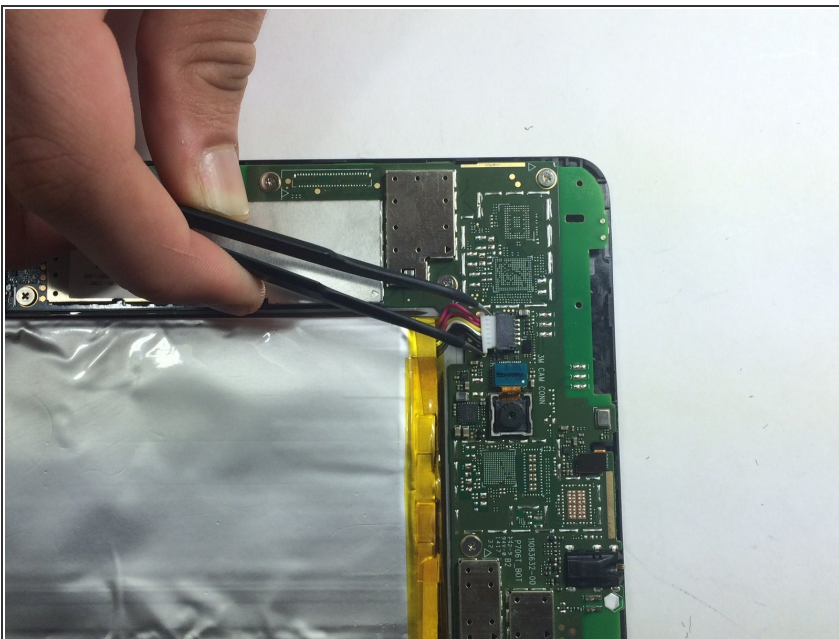
## Step 1 — Rear Case



- Use a spudger or your fingers to pry off the back case.

⚠ If your case is badly damaged, use caution because the fragments may be sharp.

## Step 2 — Battery



- Gently disconnect the battery from the motherboard using your fingers or a pair of tweezers.



## Step 3



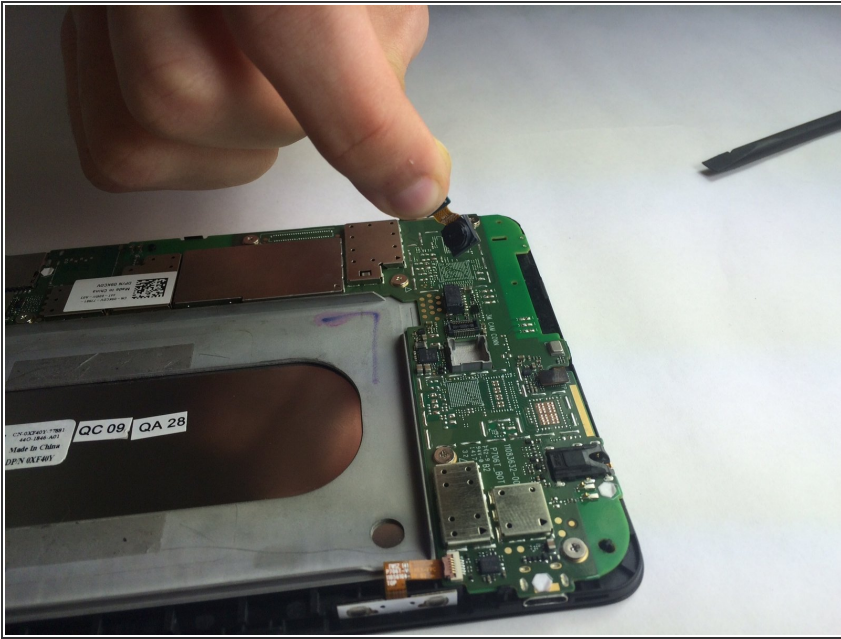
- Remove the battery by pulling it from the edges and carefully peeling it off of the base.
- ⓘ There is adhesive keeping the battery in place, so don't be afraid to use a little extra force.
- ⚠ Do not bend or warp the battery in any way as it can be a fire hazard.

## Step 4 — Rear Facing Camera



- Use a spudger to disconnect the camera from the motherboard.

## Step 5



- Remove the camera from the device.

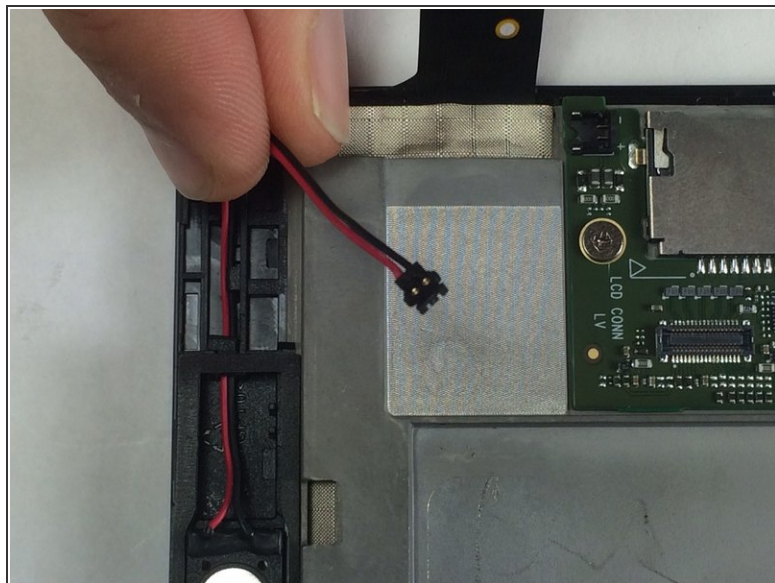
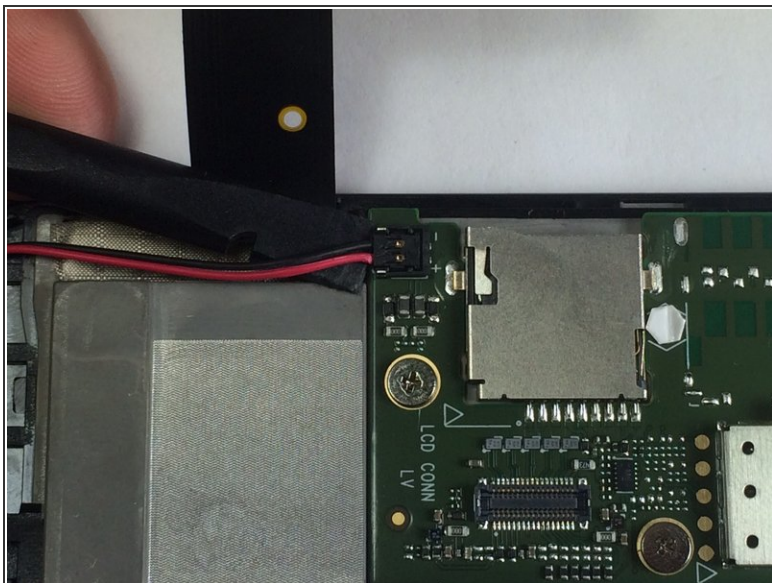
## Step 6 — Speaker



- Use a spudger to remove the ribbon cable that is around the speaker wire.

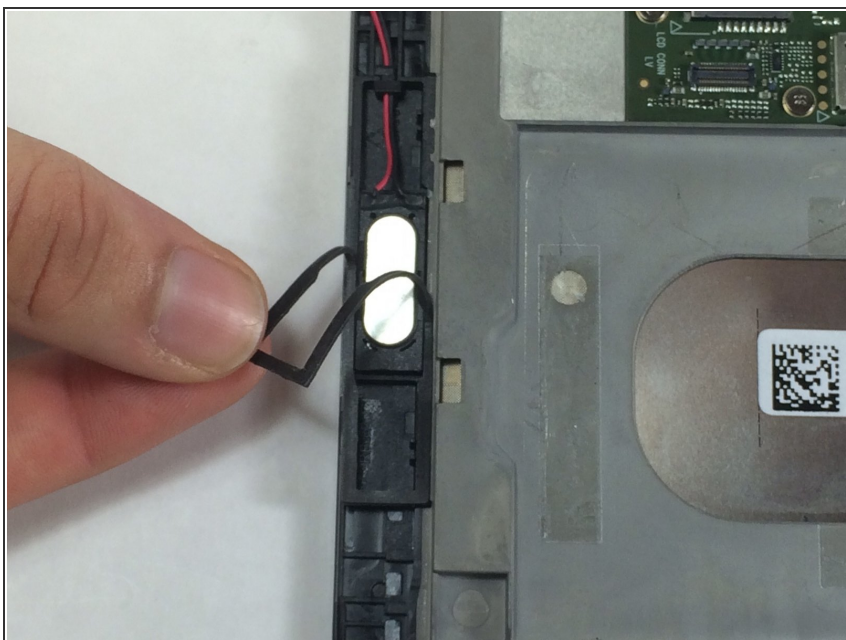


## Step 7



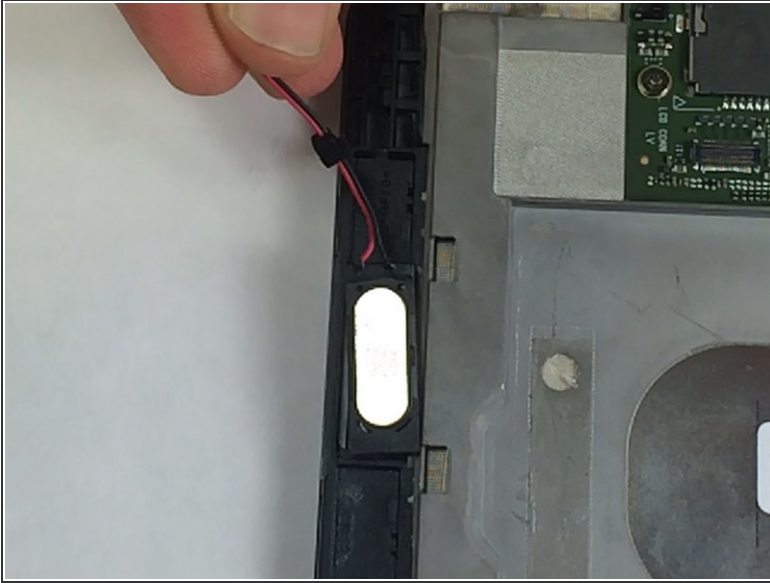
- Disconnect the speaker wire from the motherboard by prying the connector upwards with the spudger.

## Step 8



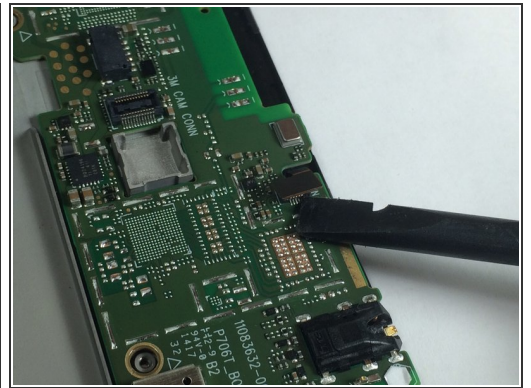
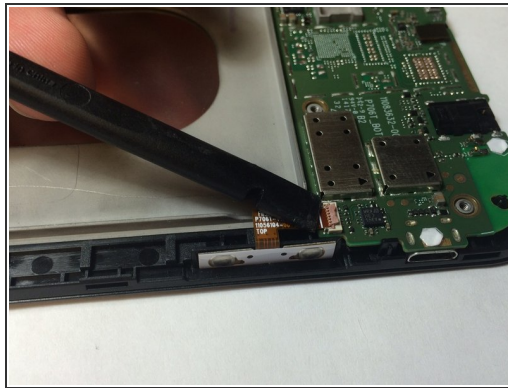
- Remove the plastic covering on the speaker.

## Step 9



- Gently pull on the wire and remove the speaker.

## Step 10 — Motherboard



- Disconnect the two remaining connections on the motherboard.
- To remove the first connector, lift up the clasp and remove the ribbon cable.
- To remove the second one, use a spudger to gently pry the connector from the motherboard.



## Step 11



- Remove all 8 of the 2.1mm Phillips head screws from the motherboard.

## Step 12



- Lift and remove the motherboard from the device.

To reassemble your device, follow these instructions in reverse order.