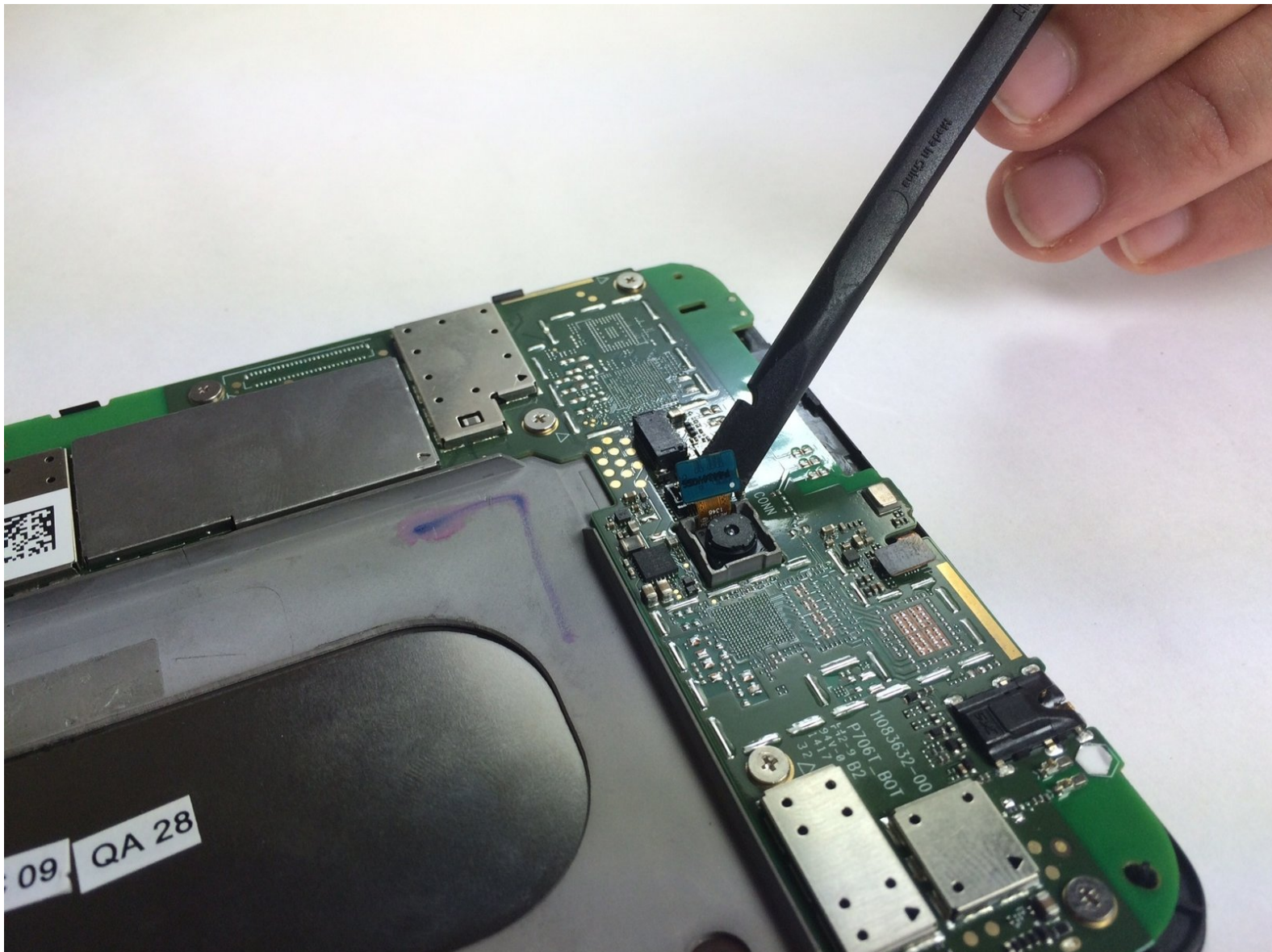




# Dell Venue 7 Rear Facing Camera Replacement

This guide will show you how to replace the Dell Venue 7 camera.

Written By: Stephen Rousseau



---

## INTRODUCTION

Use this guide to replace the rear facing camera on your Dell Venue 7.

---



### TOOLS:

- [Spudger](#) (1)
  - [Tweezers](#) (1)
-

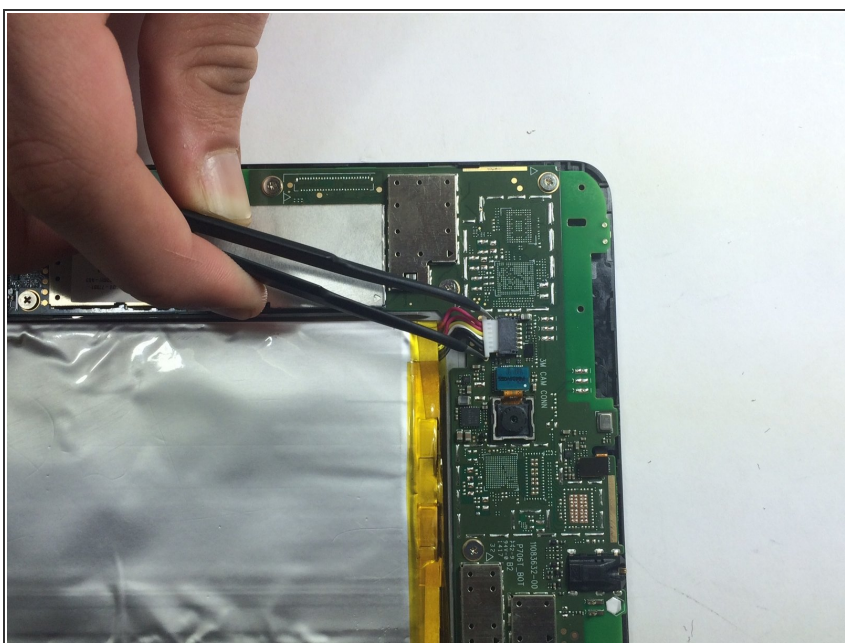
## Step 1 — Rear Case



- Use a spudger or your fingers to pry off the back case.

⚠ If your case is badly damaged, use caution because the fragments may be sharp.

## Step 2 — Battery



- Gently disconnect the battery from the motherboard using your fingers or a pair of tweezers.

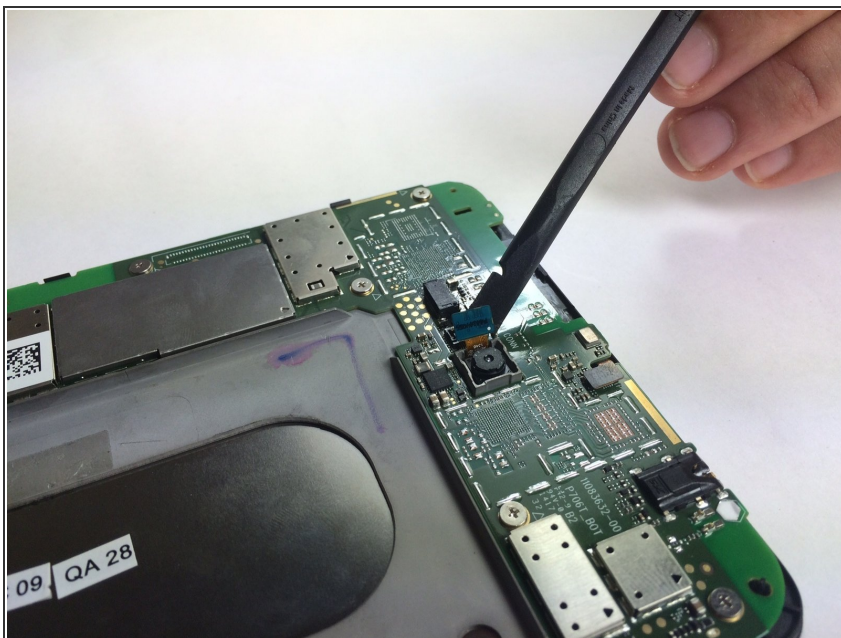


## Step 3



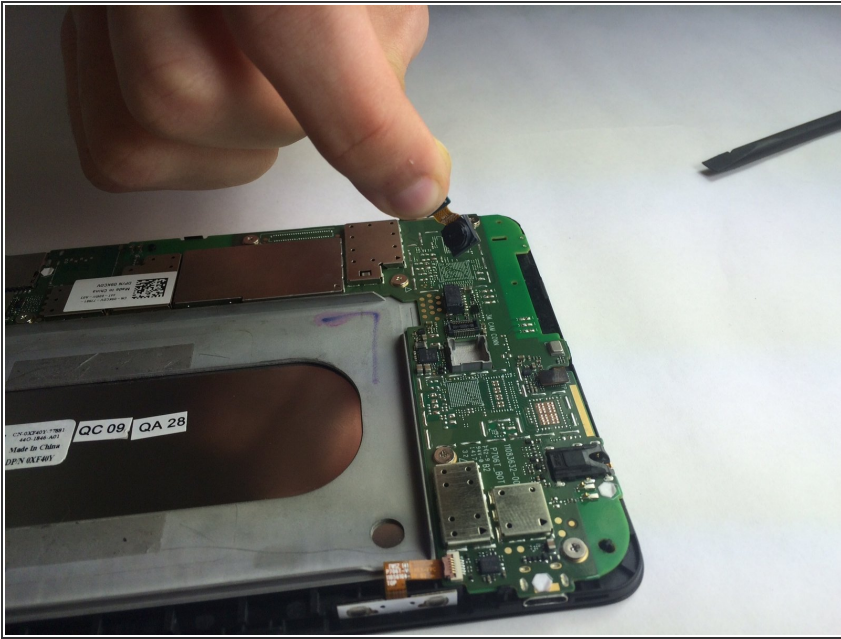
- Remove the battery by pulling it from the edges and carefully peeling it off of the base.
- ⓘ There is adhesive keeping the battery in place, so don't be afraid to use a little extra force.
- ⚠ Do not bend or warp the battery in any way as it can be a fire hazard.

## Step 4 — Rear Facing Camera



- Use a spudger to disconnect the camera from the motherboard.

## Step 5



- Remove the camera from the device.

To reassemble your device, follow these instructions in reverse order.