



Dell Venue 8 Front Camera Replacement

Remove and replace the front camera of the Dell Venue 8.

Written By: Andrea



INTRODUCTION

If your camera isn't functioning properly, not showing a display, or looks cracked or foggy, it may need to be replaced. In this guide we will be replacing the front-facing camera.



TOOLS:

- [iFixit Opening Tools](#) (1)
- [T5 Torx Screwdriver](#) (1)



PARTS:

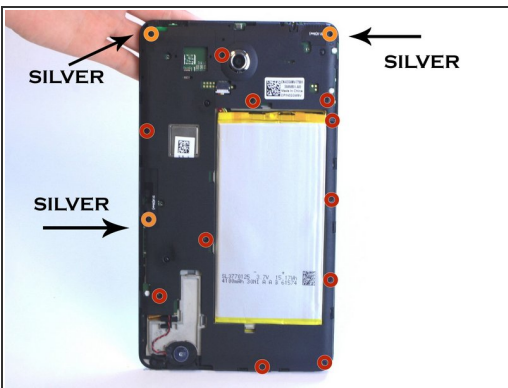
- [Dell Venue 8 Front-Facing Camera](#) (1)

Step 1 — Rear Case/Midframe



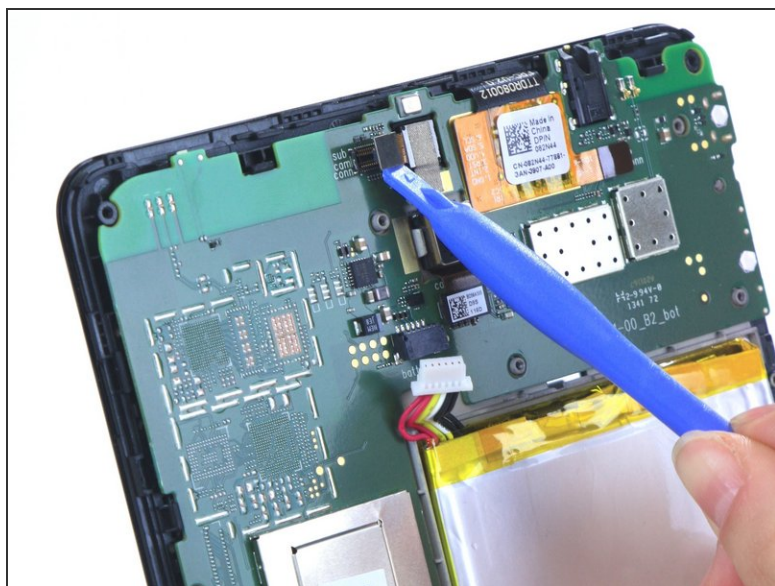
- Hold the device with the screen facing up. Gently wedge your plastic opening tool into the crease, and run it along the perimeter of the case
- ⓘ You will hear *click* sounds as the clips unhinge
- Remove the back panel of the device.

Step 2



- Remove the 14 screws with the T-5 Torx screwdriver. (11 black 3.6mm screws, and three 4.45mm screws)
- ⓘ The silver screws are marked with an "S" or a sticker [S1.6(Silver)] See the corrected image
- 4.45mm Silver screws
- 3.6mm Black screws
- Gently snap the perimeter clips open, and remove the internal plastic case.

Step 3 — Front Camera



- The front-facing camera is located just above the rear-facing camera.
- Pull the connection tab up, unclipping it.
- ⓘ Pull up on the front camera, and the adhesive will release.

To reassemble your device, follow these instructions in reverse order.