



Dell Vostro 1710 Wi-Fi Card Replacement

This guide will help you remove the Wi-Fi card from the computer.

Written By: Jeremy Campeau



INTRODUCTION

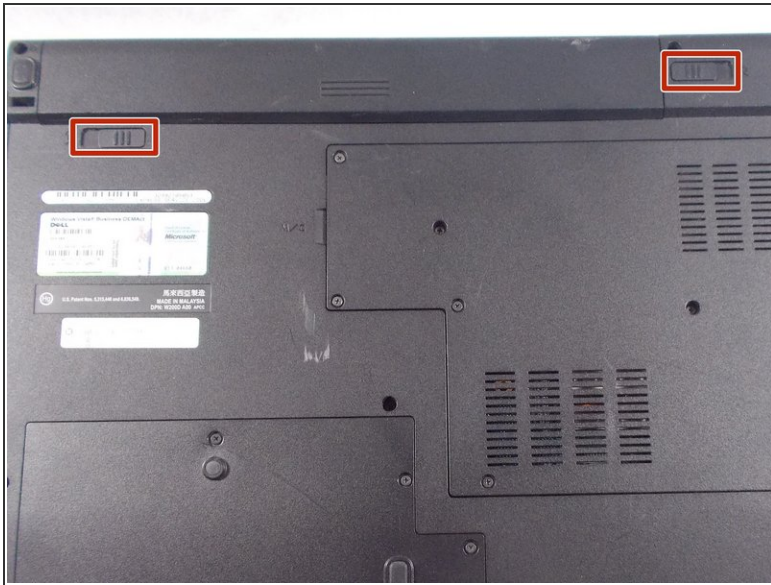
The Wi-Fi card connects your computer to the internet wirelessy. If you are having trouble connecting to your router or your internet is slow, it might be caused by the Wi-Fi card. This guide will show you step by step on how to replace the Wi-Fi card.



TOOLS:

- [Phillips #1 Screwdriver](#) (1)
-

Step 1 — Battery



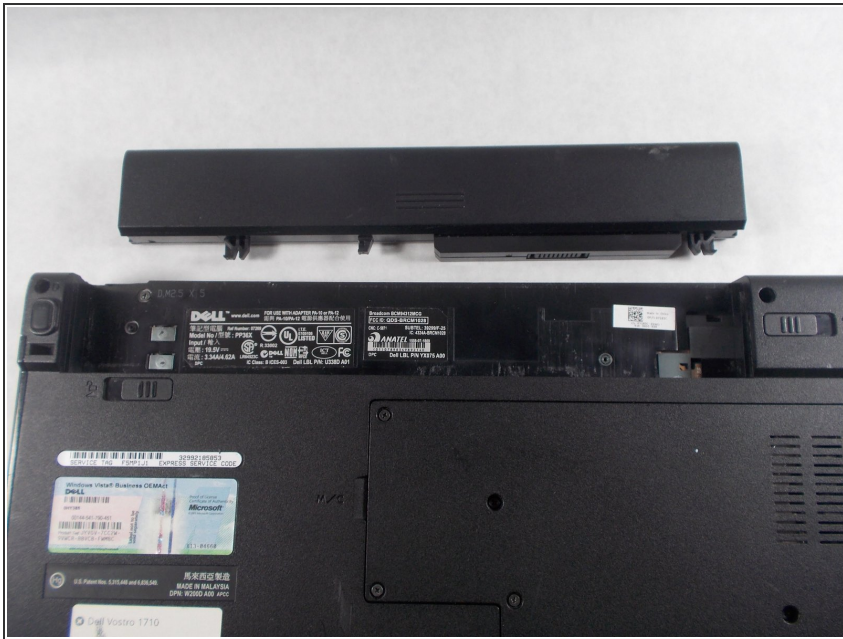
- ❗ Make certain that the power to your laptop is off.
- Press and slide the two buttons outwards and away from the battery.

Step 2



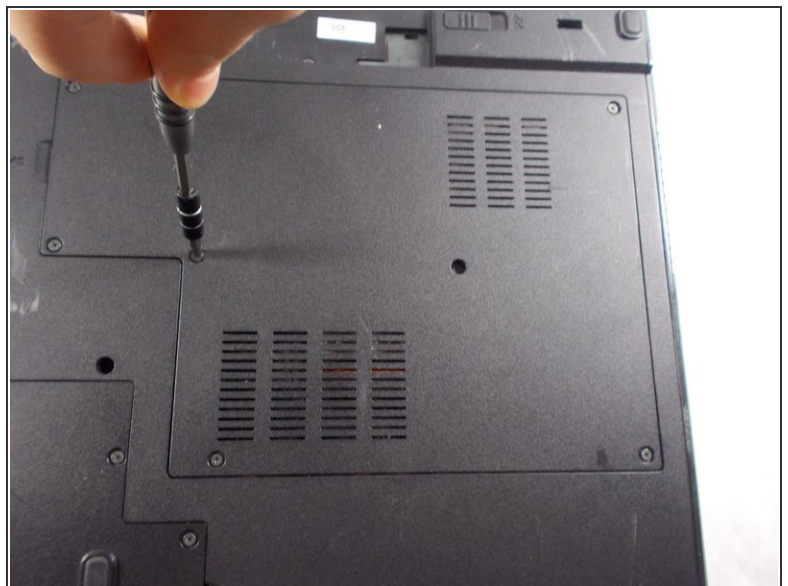
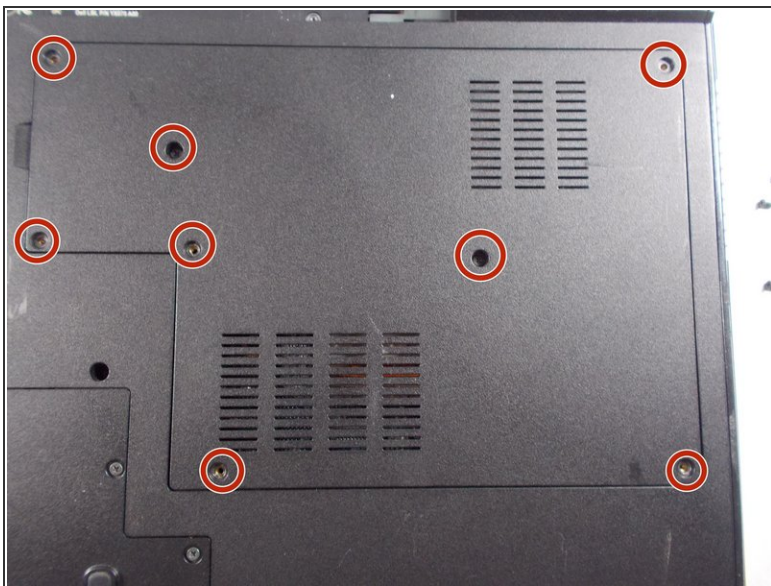
- Slide the battery away and parallel from the laptop.

Step 3



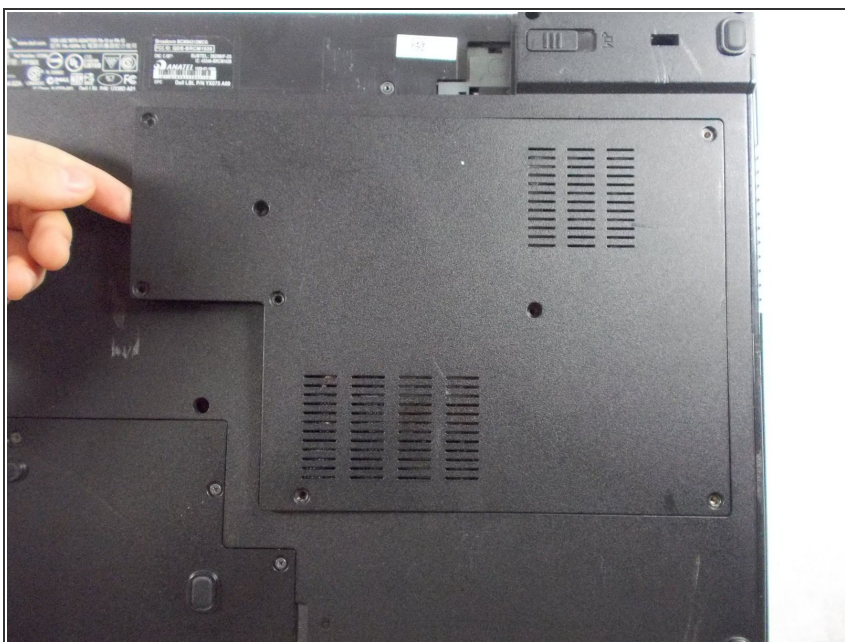
- Remove the battery from the slot.

Step 4 — Back Panel



- Unscrew the eight 6mm screws with a Philips #1 screw driver.

Step 5



- Lift back cover from the groove on the left side of the cover next to the symbol.

Step 6 — Wi-Fi Card



- Remove the two 3mm Philips #1 screws from the top of the Wi-Fi card.

Step 7



- Unclip both black and white wires from the Wi-Fi card.

Step 8



- Gently pull Wi-Fi card out of its position at its angle.

To reassemble your device, follow these instructions in reverse order.