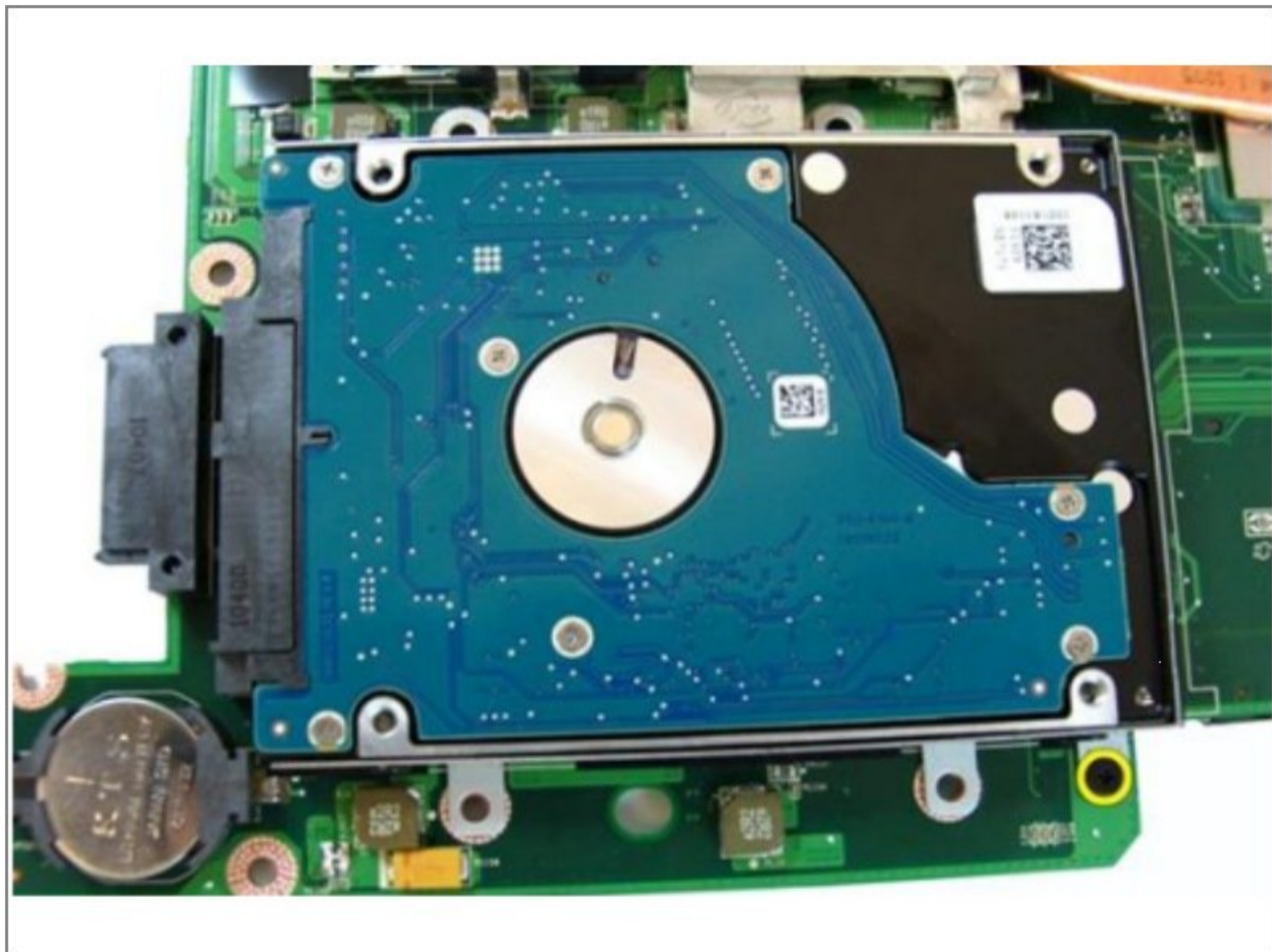




Dell Vostro 3450 Hard Drive Replacement

Written By: Johnathan Hammond





TOOLS:

- [Spudger](#) (1)
 - [Phillips #0 Screwdriver](#) (1)
-

Step 1 — Unlocking the Battery



- Slide the left and the right battery release latches to the unlock position.

Step 2 — Removing the Battery



- Slide the battery and remove it from the computer.

Step 3 — Press the ExpressCard



- Press the ExpressCard to release it from the computer.

Step 4 — Slide the ExpressCard



- Slide the ExpressCard out of the computer.
- ★ If this is all you are doing Follow Step In Reverse if not Go to Next Step.

Step 5 — Prying the Keyboard



- Press the keyboard down. Pry the keyboard with the use of a flat-head screwdriver towards the display to reveal the first keyboard retainer.

Step 6 — Prying the Keyboard retainer



- Pry up the second keyboard retainer.

Step 7 — Pry up the Keyboard Retainer



- Pry up the third keyboard retainer.

Step 8 — Prying the Retainer



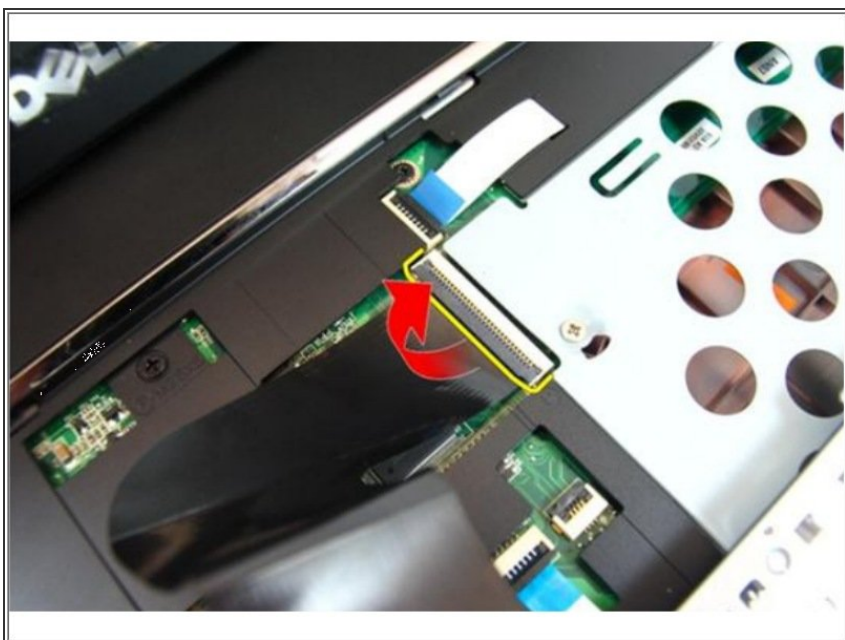
- Pry up the fourth keyboard retainer.

Step 9 — Pull up the Keyboard



- Pull up the keyboard from the palm rest.

Step 10 — Release the Latch



- Release the latch on the system board connector, then disconnect the keyboard cable.
- ★ If this is all you are doing Follow Step In Reverse if not Go to Next Step.

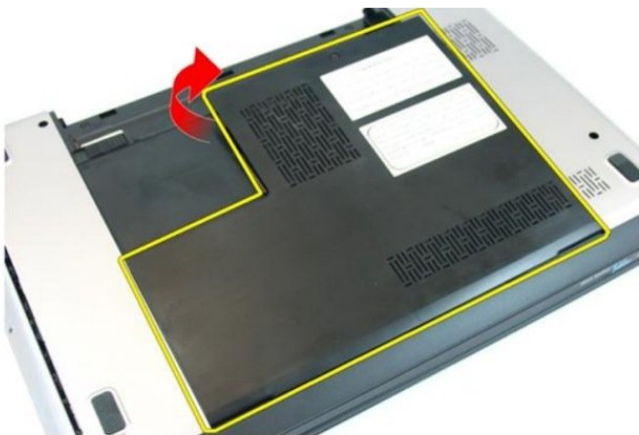
Step 11 — Loosen the Screw

- Loosen the screw that secures the memory door.

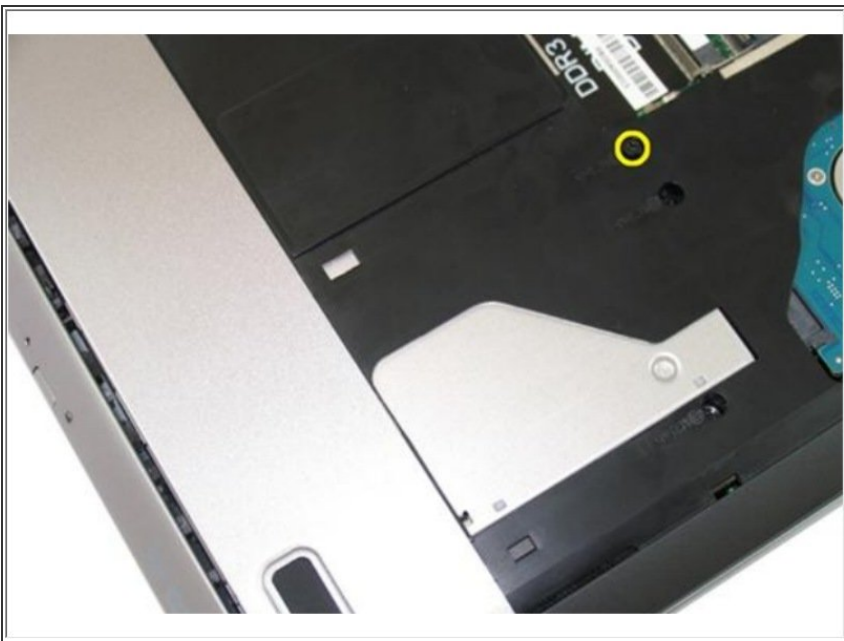


Step 12 — Removing the Memory Door

- Pry up the memory door near the screw hole, lift and remove it.
- ☑ If this is all you are doing Follow Step In Reverse if not Go to Next Step.

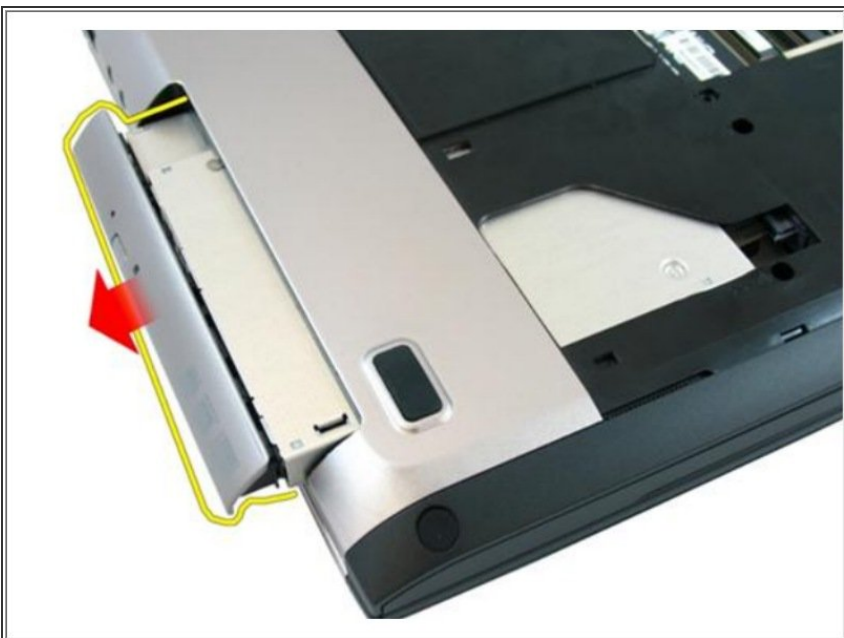


Step 13 — Remove the Screw



- Remove the screw that secures the optical drive to the computer.

Step 14 — Prying the Drive



- Gently pry the optical drive out of the computer.

Step 15 — Remove the Screws



- Remove the screws that secure the optical drive bracket.

Step 16 — Removing the Optical Drive



- Remove the optical drive bracket from the optical drive module.

Step 17 — Remove the Screws



- Remove the screws in the battery compartment.

Step 18 — Remove the Screws



- Remove the screws in the optical drive compartment.

Step 19 — Remove the Rubber



- Remove the rubber from the bottom base on the right side.

Step 20 — Remove the Rubber



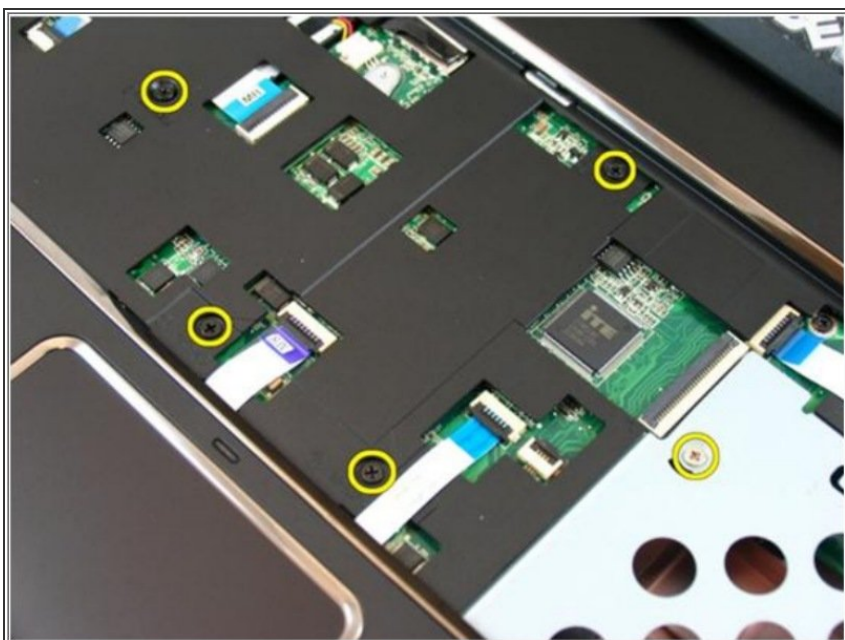
- Remove the rubber from the bottom base on the left side.

Step 21 — Remove the Screws



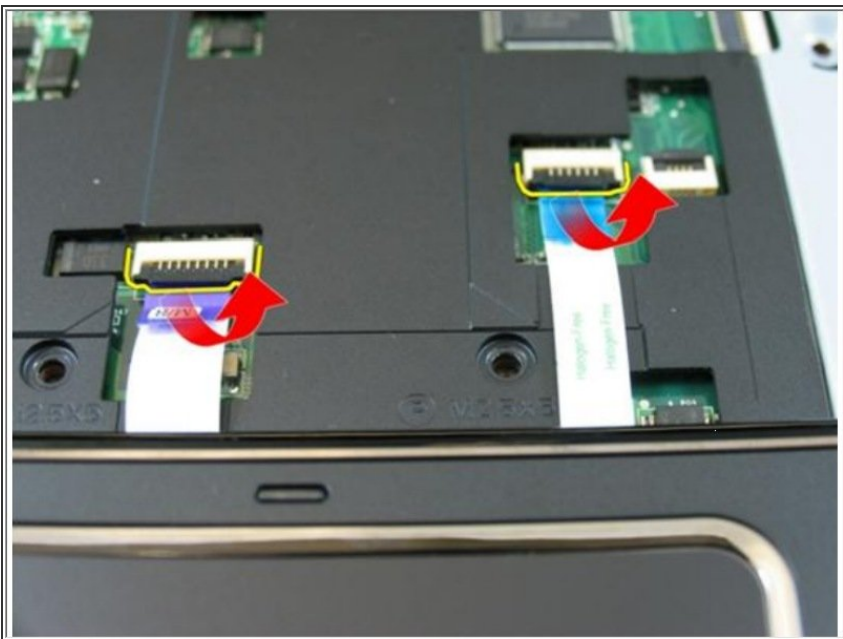
- Remove all the screws from the bottom base.

Step 22 — Remove the Screws



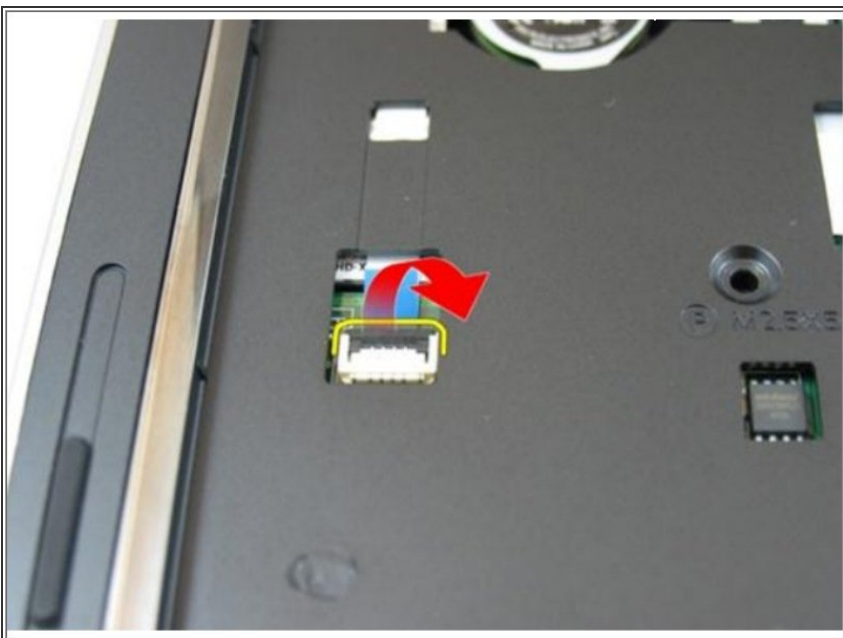
- Flip the computer around and remove the screws that secures the palm rest.

Step 23 — Release the Latches



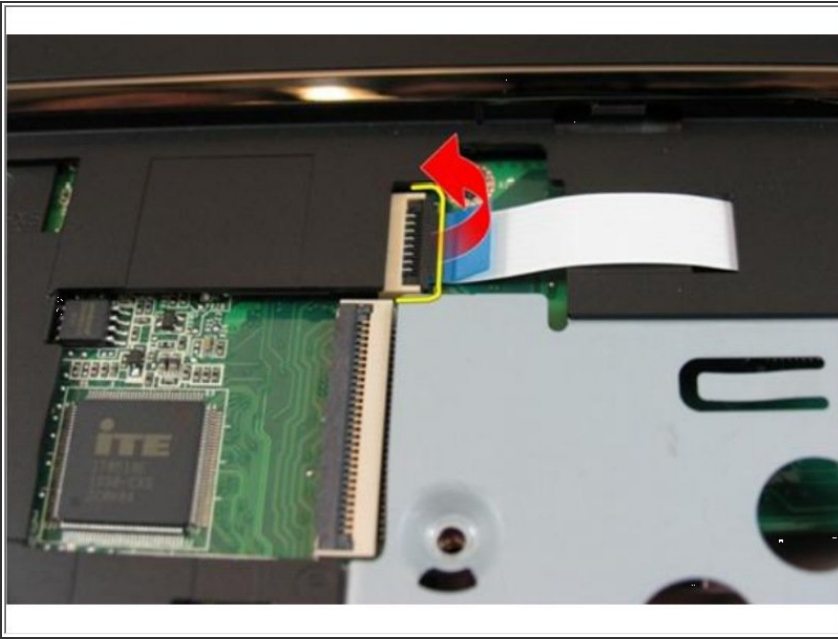
- Release the latches on the system board connector, then disconnect the touch pad cable and the finger printer cable.

Step 24 — Release the Latch



- Release the latch on the system board connector and then disconnect the power button cable.

Step 25 — Disconnecting the Key Cable



- Release the latch on the system board connector and then disconnect the hot key cable.

Step 26 — Prying the Palm Rest



- Pry up the right side of the palm rest.

Step 27 — Prying the Palm Rest



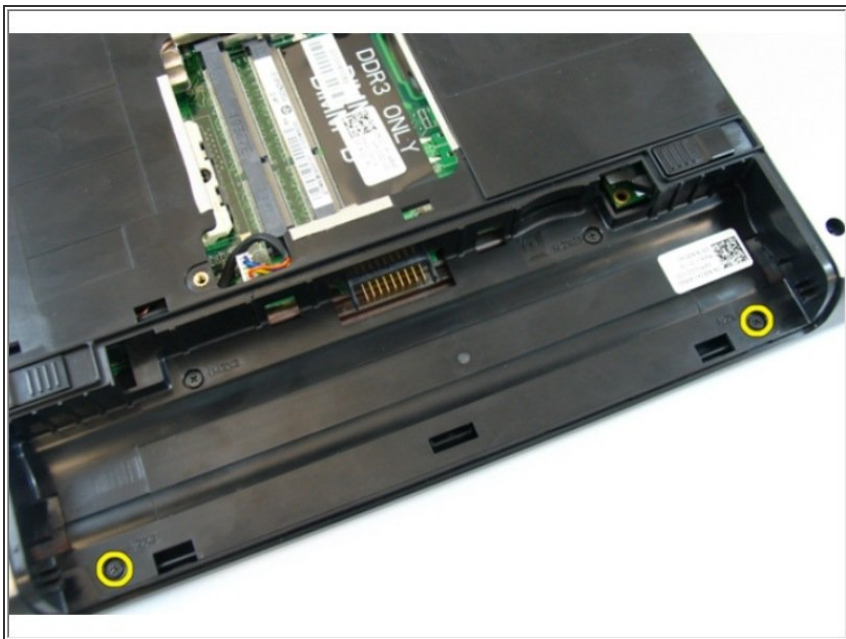
- Pry up the left side of the palm rest.

Step 28 — Prying the Sides



- Pry up the sides of the palm rest and remove it from the computer.
- ★ If this is all you are doing Follow Step In Reverse if not Go to Next Step.

Step 29 — Remove the Screws



- Remove the screws that secure the hinge cover.

Step 30 — Press Down on the Hooks



- Press down on the hooks highlighted in the image.

Step 31 — Removing the Hinge Cover



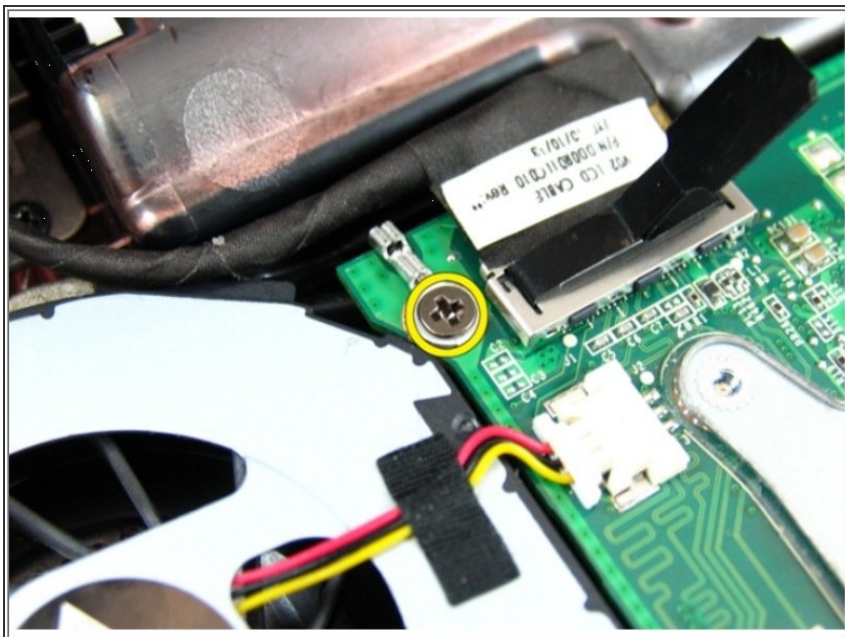
- Flip the computer around and remove the hinge cover from the side.
- ★ If this is all you are doing Follow Step In Reverse if not Go to Next Step.

Step 32 — Remove the Screws



- Remove the screws that secure the display hinge.

Step 33 — Loosen the Screw



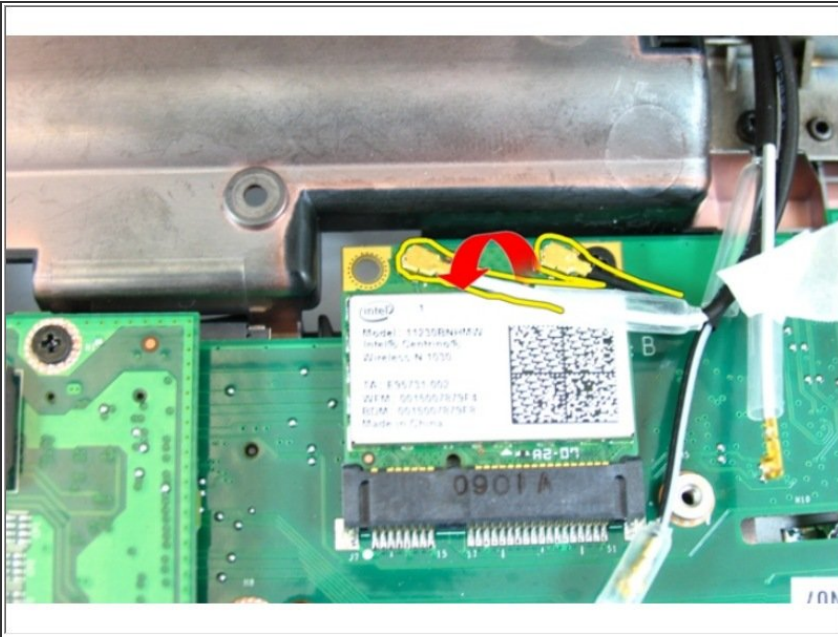
- Loosen the screw that secures the low-voltage differential signaling (LVDS) cable.

Step 34 — Disconnecting the LVDS Cable



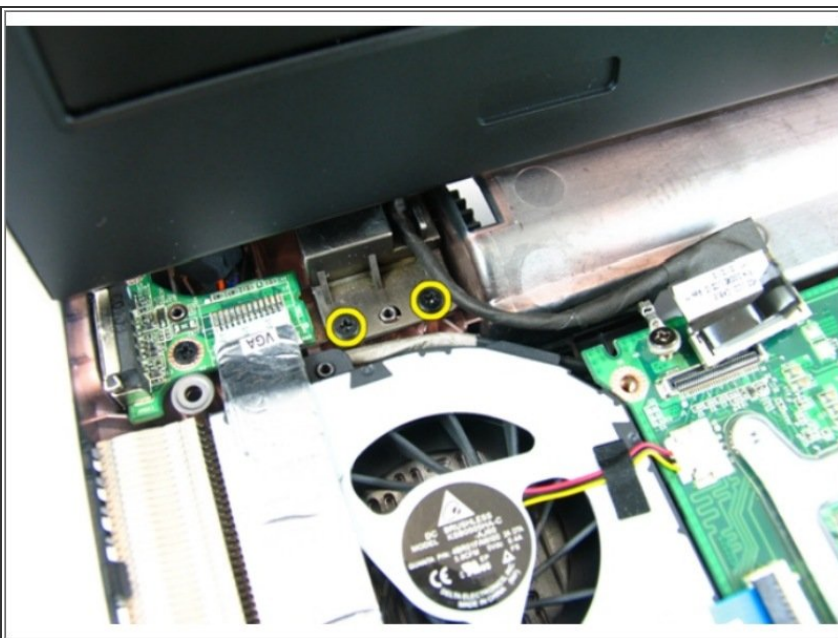
- Disconnect the LVDS cable from the system board.

Step 35 — Disconnecting the Wireless Cables



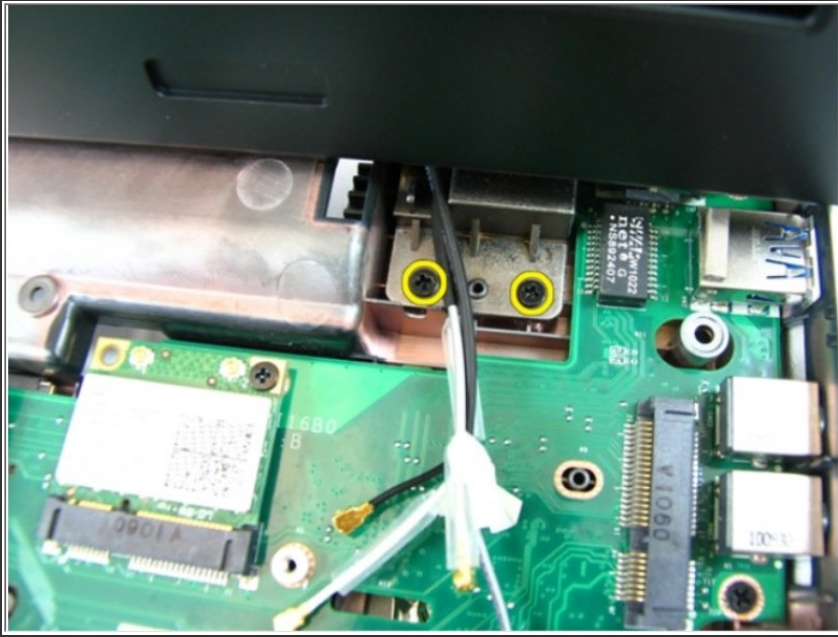
- Disconnect the wireless local area network (WLAN) antenna cable.

Step 36 — Remove the Screws



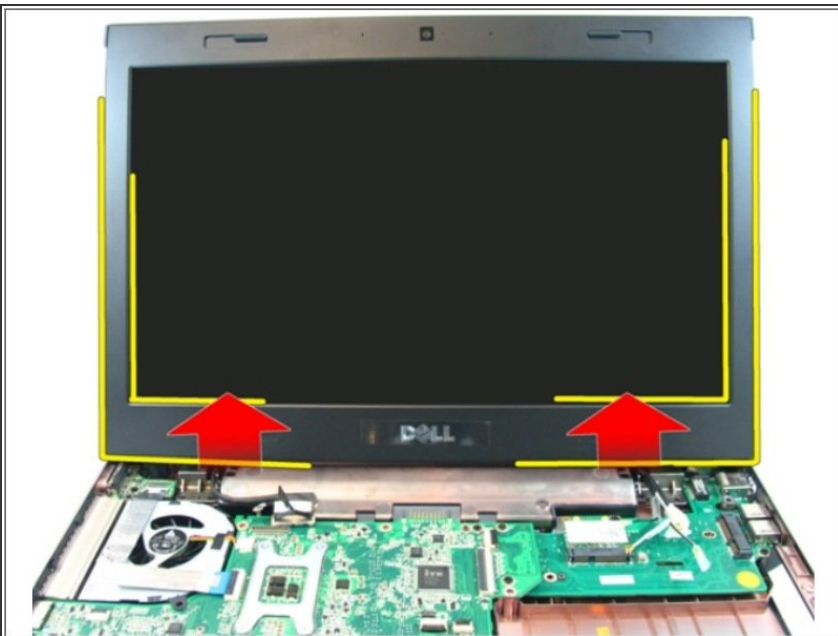
- Remove the screws that secure the left hinge.

Step 37 — Remove the Screws



- Remove the screws that secure the right hinge.

Step 38 — Lifting the Display Assembly



- Lift the display assembly and remove it from the computer.
- ☑ If this is all you are doing Follow Step In Reverse if not Go to Next Step.

Step 39 — Remove the Screw



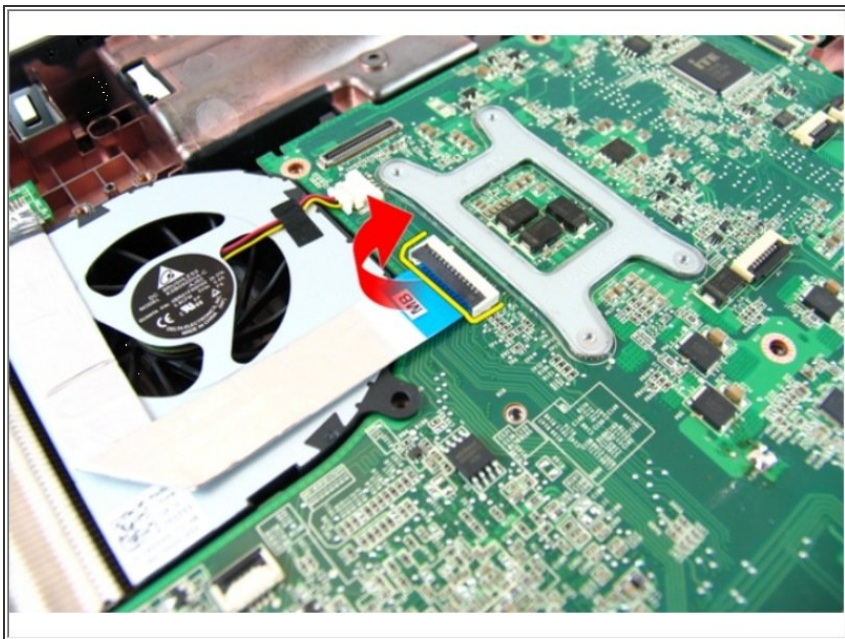
- Remove the screw that secures the WLAN card.

Step 40 — Pull the Card



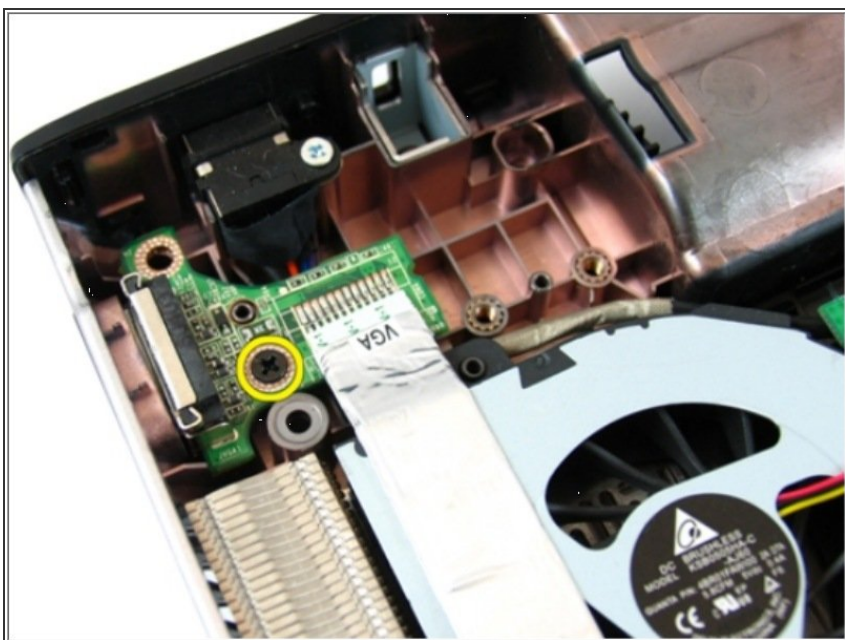
- Pull the WLAN card straight out of its socket and remove it.
- ☑ If this is all you are doing Follow Step In Reverse if not Go to Next Step.

Step 41 — Release the Latch



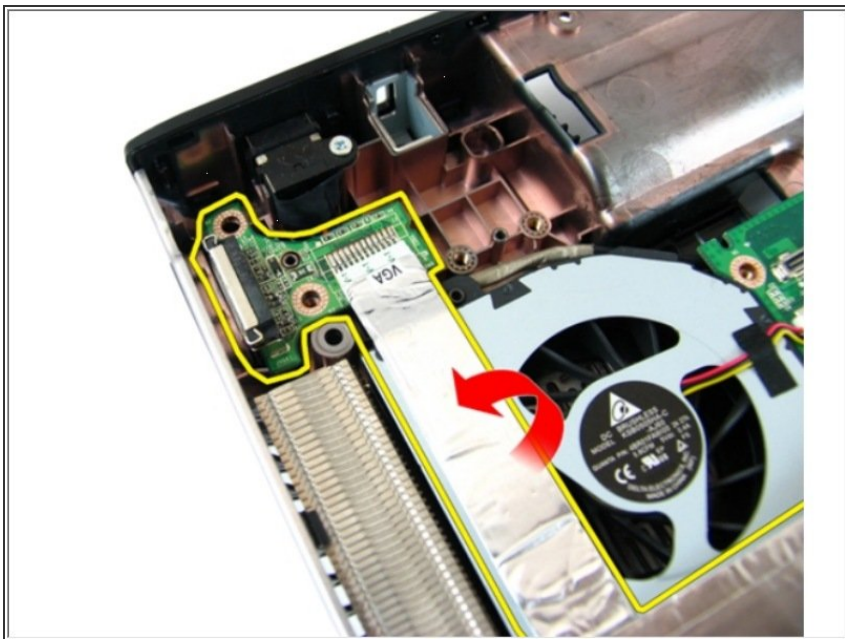
- Release the latch on the system board and then disconnect the VGA cable.

Step 42 — Remove the Screw



- Remove the screw that secures the VGA board.

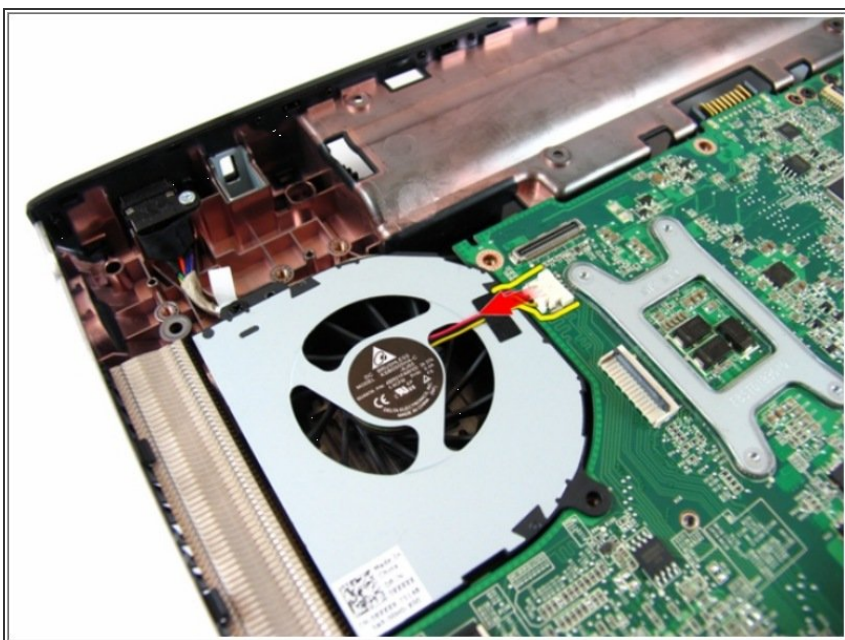
Step 43 — Remove the VGA Board



- Remove the VGA board from the chassis.

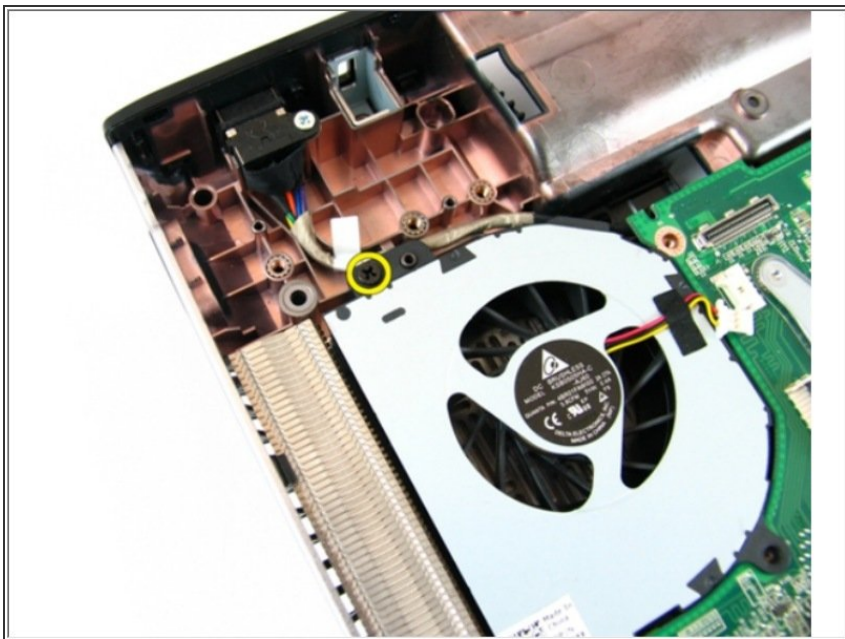
★ If this is all you are doing Follow Step In Reverse if not Go to Next Step.

Step 44 — Disconnect the System Fan Cable



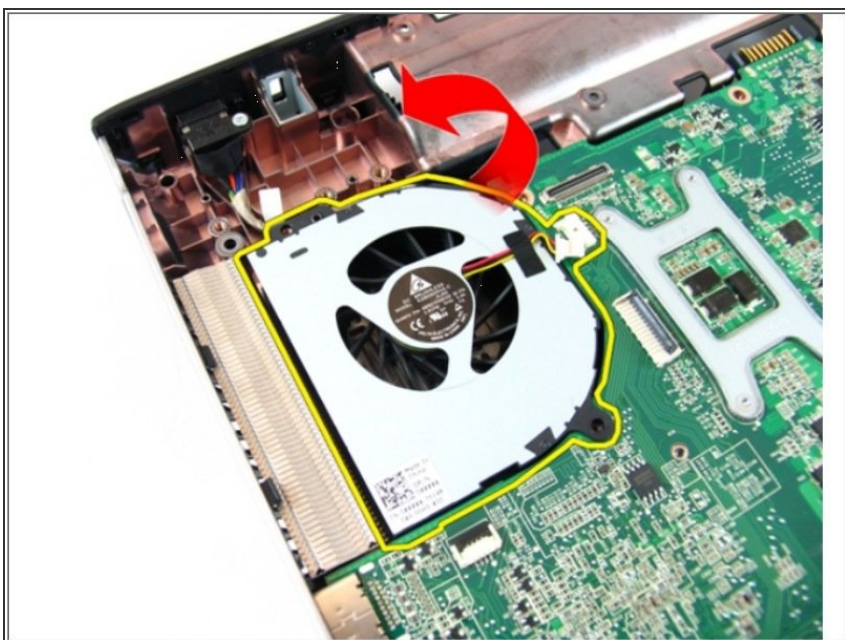
- Disconnect the system fan cable from the system board.

Step 45 — Remove the Screw



- Remove the screw that secures the system fan.

Step 46 — Remove the System Fan



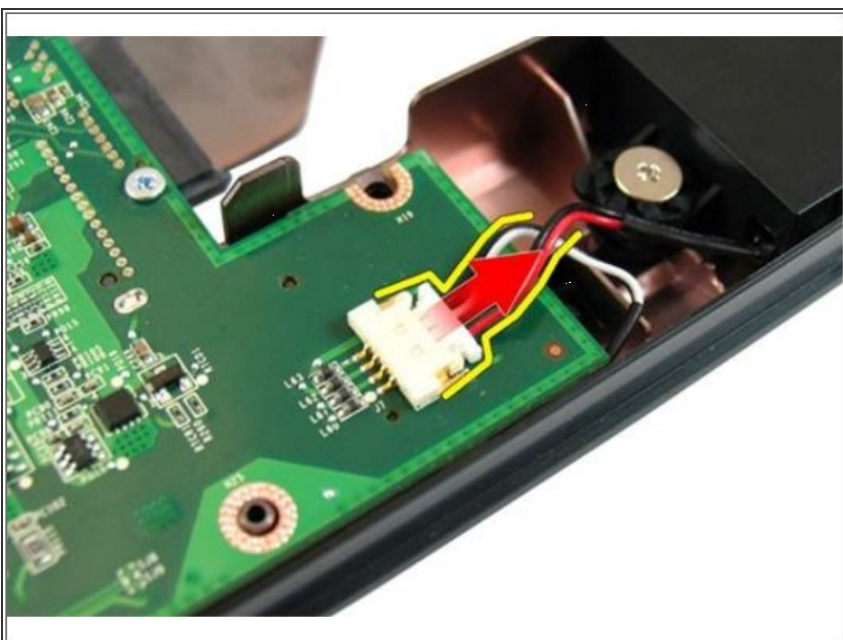
- Remove the system fan from the bottom base module.
- ☒ If this is all you are doing Follow Step In Reverse if not Go to Next Step.

Step 47 — Disconnect the DC-in Cable



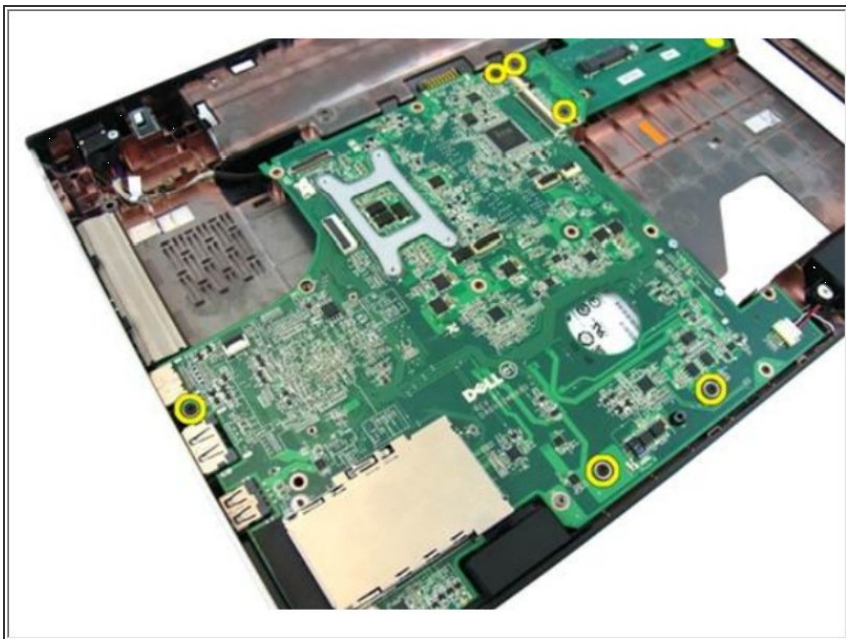
- Disconnect the DC-in cable connector from the system board.

Step 48 — Disconnecting the Speaker Cable



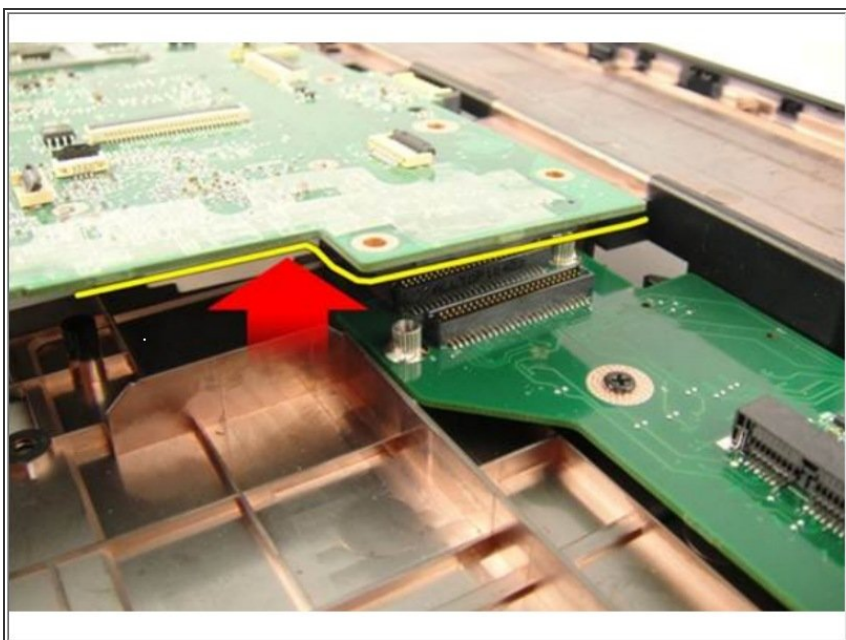
- Disconnect the speaker cable from the system board.

Step 49 — Remove the Screws



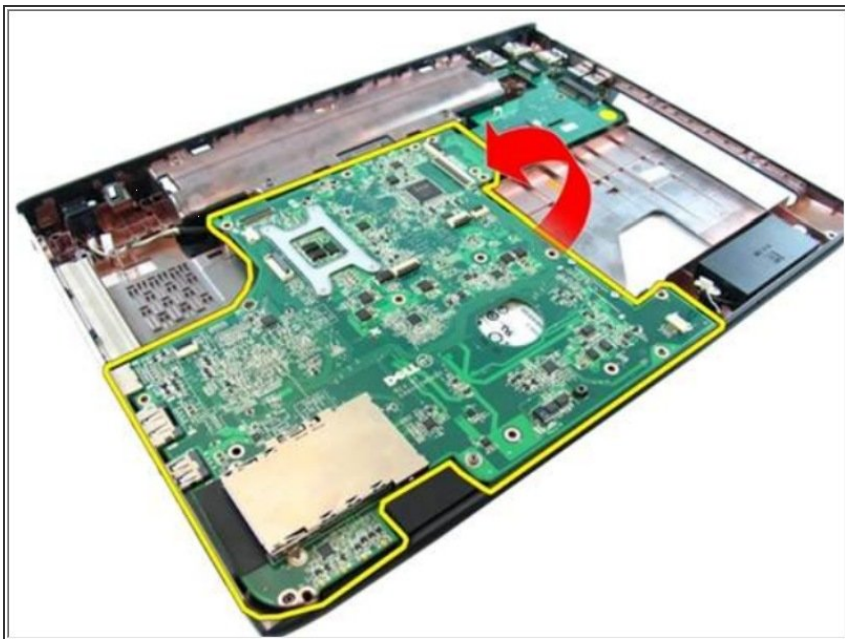
- Remove the screws that secures the system board.

Step 50 — Disconnecting the System Board



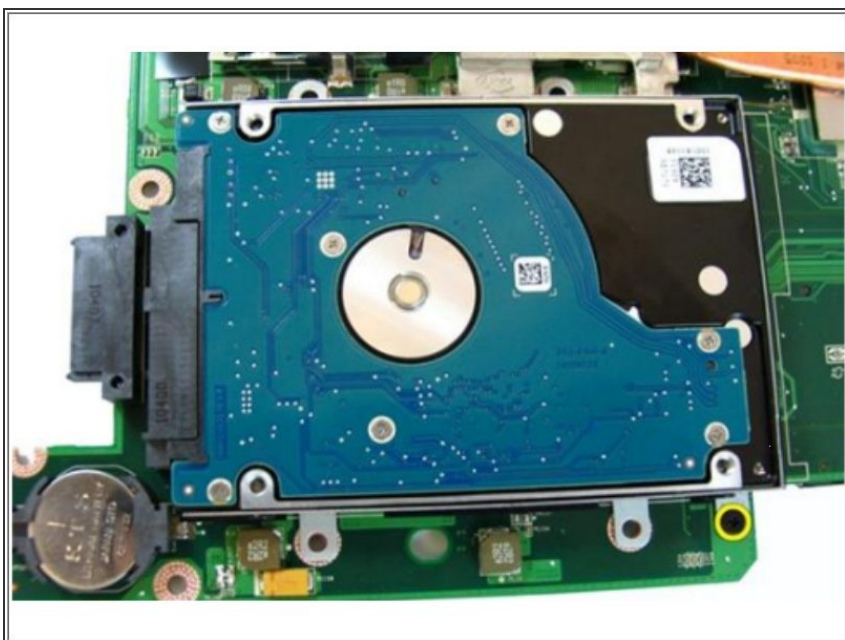
- Disconnect the system board from the Input/Output panel.

Step 51 — Remove the System Board



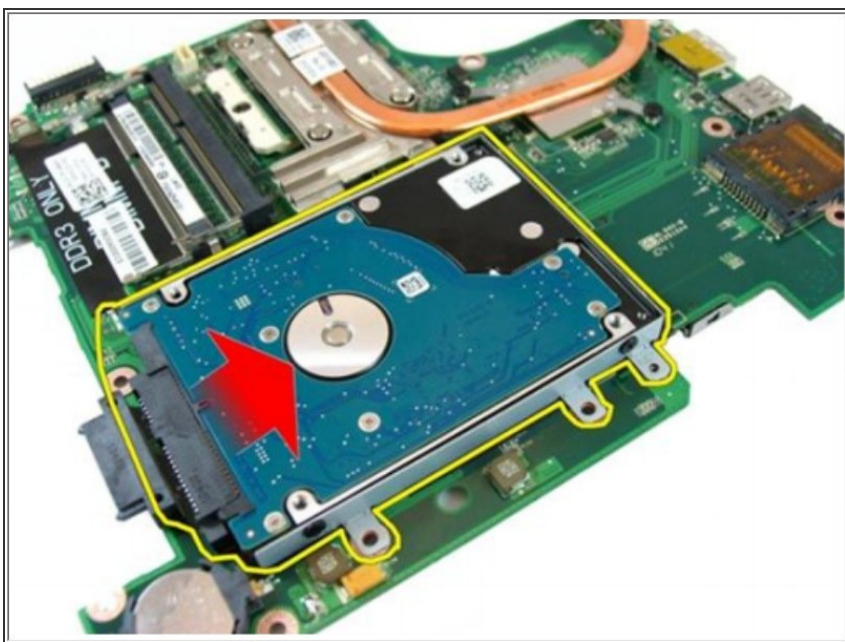
- Lift and remove system board from the chassis.
- ★ If this is all you are doing Follow Step In Reverse if not Go to Next Step.

Step 52 — Hard Drive



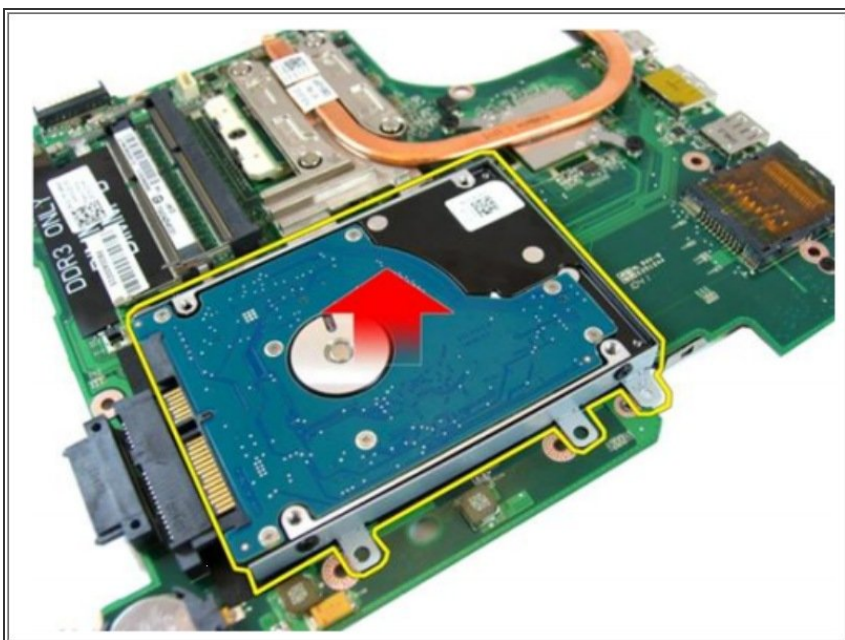
- Remove the screws that secures the hard drive bracket

Step 53



- Slide the hard-drive module to release it from the system board

Step 54



- Remove the hard drive module from the system board.

Step 55



- Remove the screws that secures the hard-drive bracket on one side.

Step 56



- Remove the screws that secures the hard-drive bracket on the other side

Step 57



- Slide the hard drive from the hard-drive bracket.
- ☑ If this is all you are doing Follow Step In Reverse if not Go to Next Step.

To reassemble your device, follow these instructions in reverse order.