



# Dell Vostro 3450 System Board Replacement

Written By: Johnathan Hammond



---

# INTRODUCTION

In this guide, we will show you how to remove and replace the System Board.



## TOOLS:

- [Spudger](#) (1)
  - [Phillips #0 Screwdriver](#) (1)
-

## Step 1 — Unlocking the Battery



- Slide the left and the right battery release latches to the unlock position.

## Step 2 — Removing the Battery



- Slide the battery and remove it from the computer.

### Step 3 — Press the ExpressCard



- Press the ExpressCard to release it from the computer.

### Step 4 — Slide the ExpressCard



- Slide the ExpressCard out of the computer.
- ★ If this is all you are doing Follow Step In Reverse if not Go to Next Step.

## A close-up photograph of a laptop keyboard. A red curved arrow points from the left towards the 'Print' key, which is located between the 'Insert' and 'Delete' keys. A black pen tip is touching the 'Print' key. Other visible keys include 'Delete', 'Home', 'Pg Up', 'Pg Dn', 'End', and 'Backspace'.

- 
- A close-up photograph of a laptop keyboard. A large, semi-transparent red arrow is overlaid on the image, pointing from the left towards the F10 function key. The keyboard is black with white lettering on the keys. The F10 key is located between the F9 and F11 keys. The F9 key has a right-pointing arrow icon, and the F11 key has a window icon. The keys around F10 include the number 0 key with a closing parenthesis, the number 9 key with an opening parenthesis, the number 8 key with an asterisk, and the letter keys P, O, L, and K.

- Page 5 of 28



## Step 7 — Pry up the Keyboard Retainer



- Pry up the third keyboard retainer.

## Step 8 — Prying the Retainer



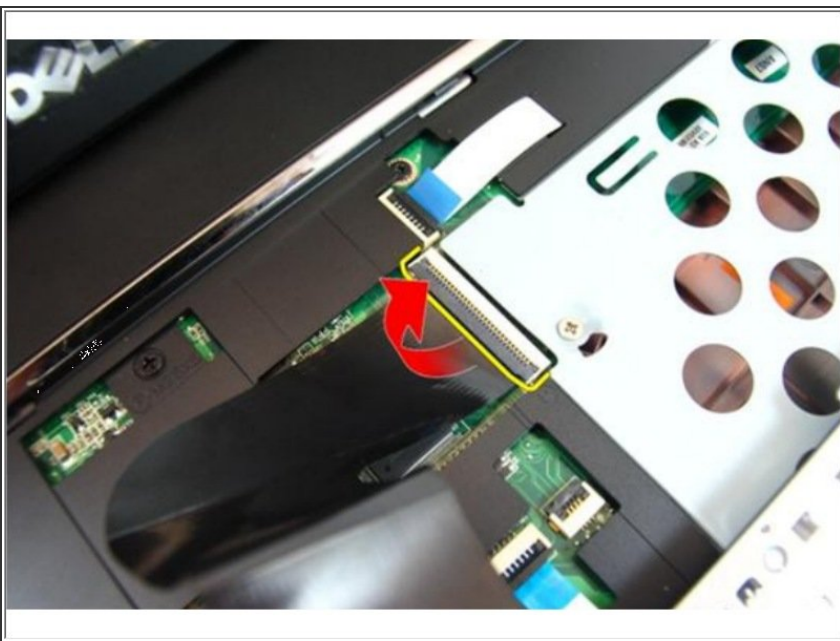
- Pry up the fourth keyboard retainer.

## Step 9 — Pull up the Keyboard



- Pull up the keyboard from the palm rest.

## Step 10 — Release the Latch



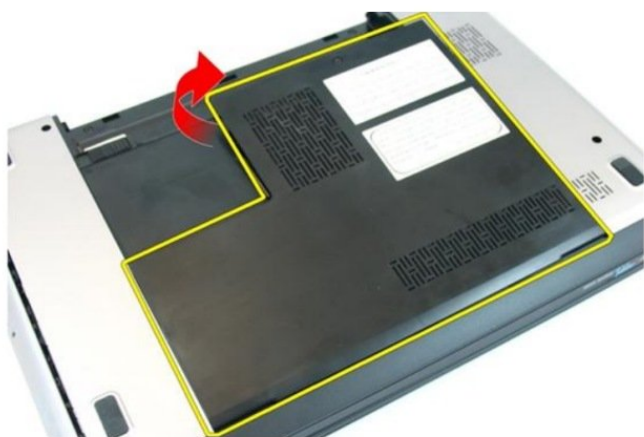
- Release the latch on the system board connector, then disconnect the keyboard cable.
- ★ If this is all you are doing Follow Step In Reverse if not Go to Next Step.

## Step 11 — Loosen the Screw



- Loosen the screw that secures the memory door.

## Step 12 — Removing the Memory Door



- Pry up the memory door near the screw hole, lift and remove it.
- ☑ If this is all you are doing Follow Step In Reverse if not Go to Next Step.

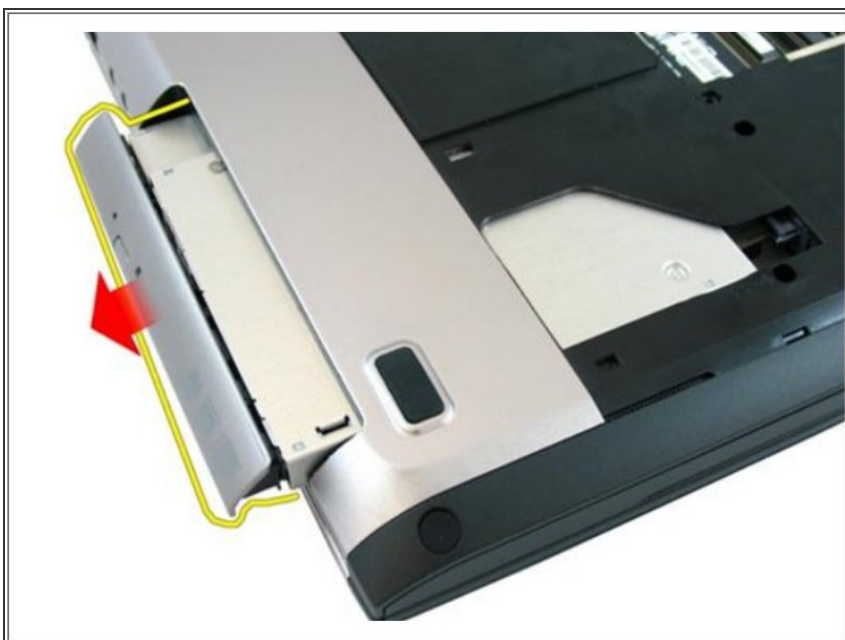


## Step 13 — Remove the Screw



- Remove the screw that secures the optical drive to the computer.

## Step 14 — Prying the Drive



- Gently pry the optical drive out of the computer.

## Step 15 — Remove the Screws



- Remove the screws that secure the optical drive bracket.

## Step 16 — Removing the Optical Drive



- Remove the optical drive bracket from the optical drive module.

## Step 17 — Remove the Screws



- Remove the screws in the battery compartment.

## Step 18 — Remove the Screws



- Remove the screws in the optical drive compartment.

## Step 19 — Remove the Rubber



- Remove the rubber from the bottom base on the right side.

## Step 20 — Remove the Rubber



- Remove the rubber from the bottom base on the left side.

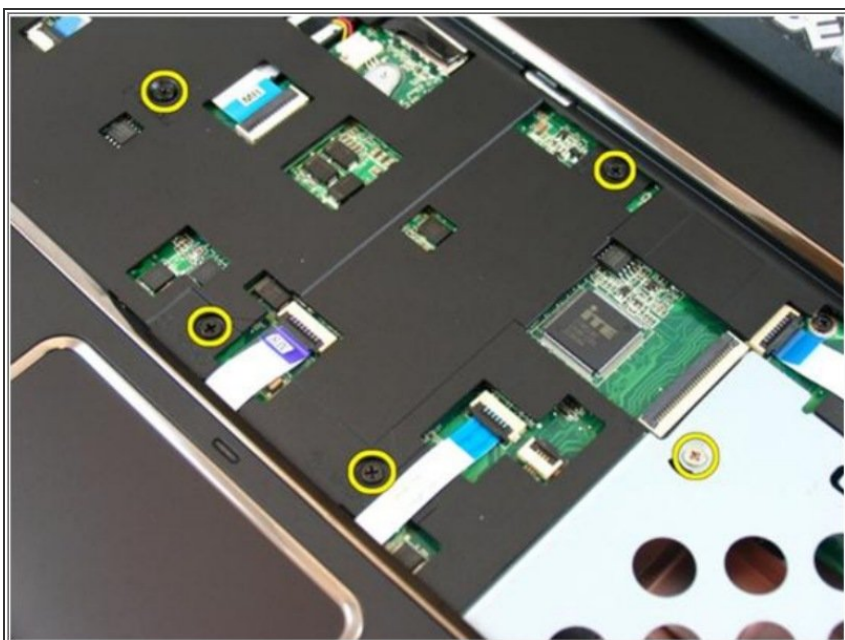


## Step 21 — Remove the Screws



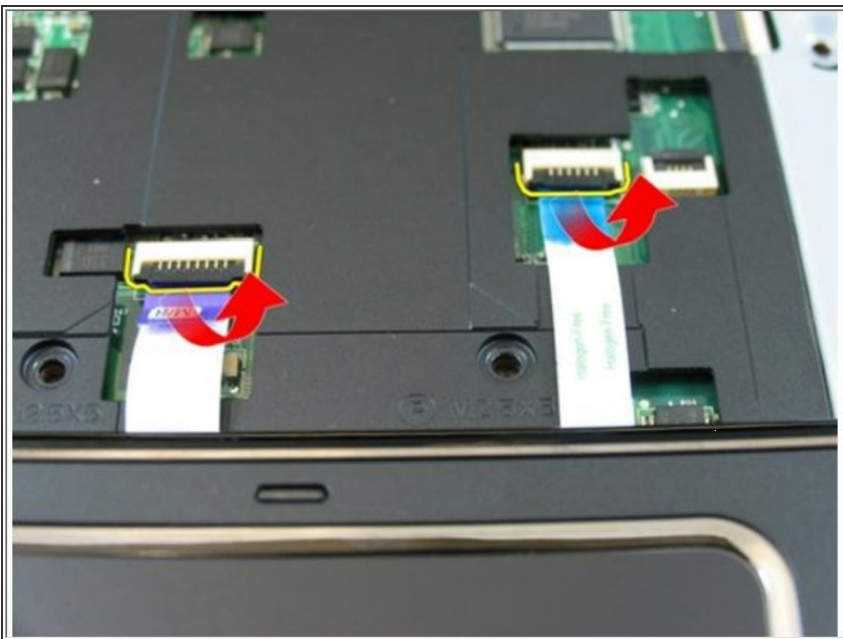
- Remove all the screws from the bottom base.

## Step 22 — Remove the Screws



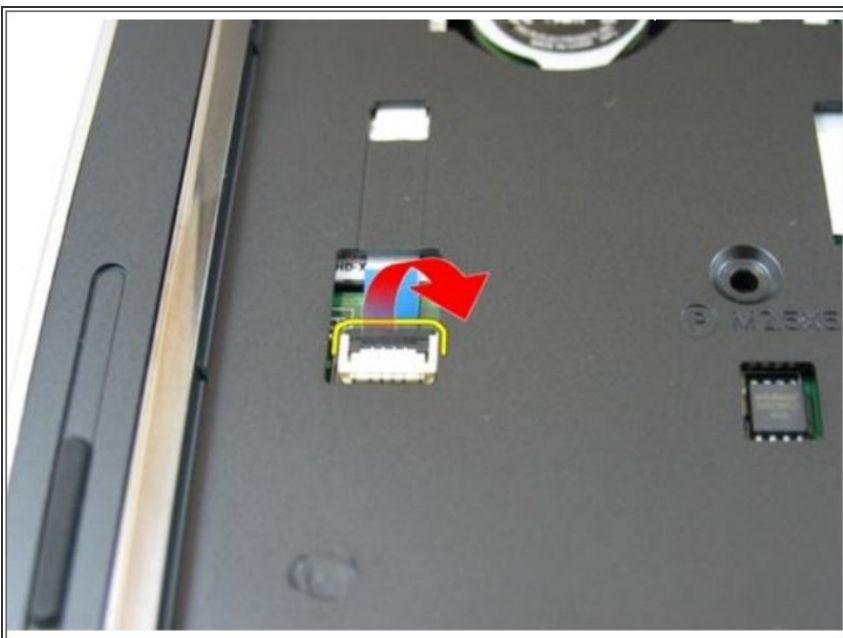
- Flip the computer around and remove the screws that secures the palm rest.

## Step 23 — Release the Latches



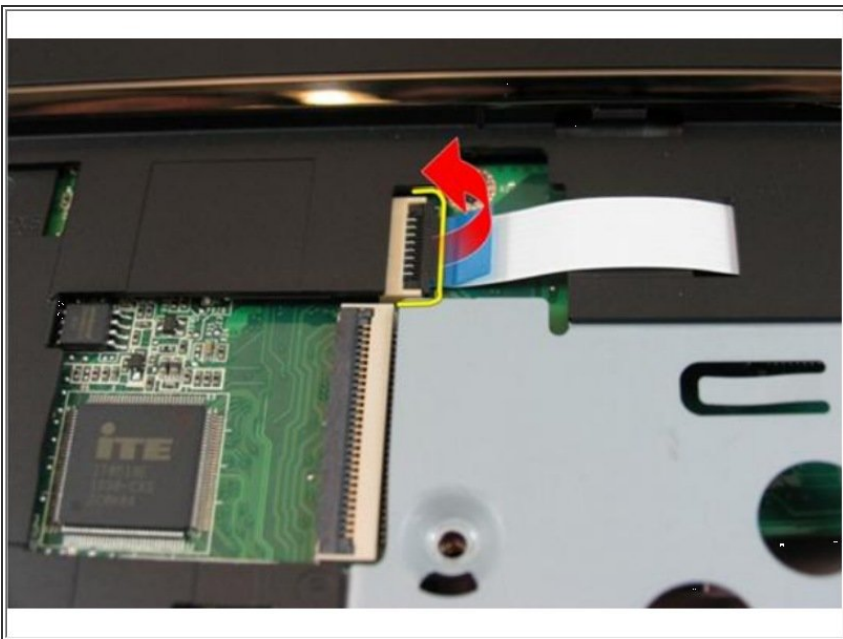
- Release the latches on the system board connector, then disconnect the touch pad cable and the finger printer cable.

## Step 24 — Release the Latch



- Release the latch on the system board connector and then disconnect the power button cable.

## Step 25 — Disconnecting the Key Cable



- Release the latch on the system board connector and then disconnect the hot key cable.

## Step 26 — Prying the Palm Rest



- Pry up the right side of the palm rest.

## Step 27 — Prying the Palm Rest



- Pry up the left side of the palm rest.

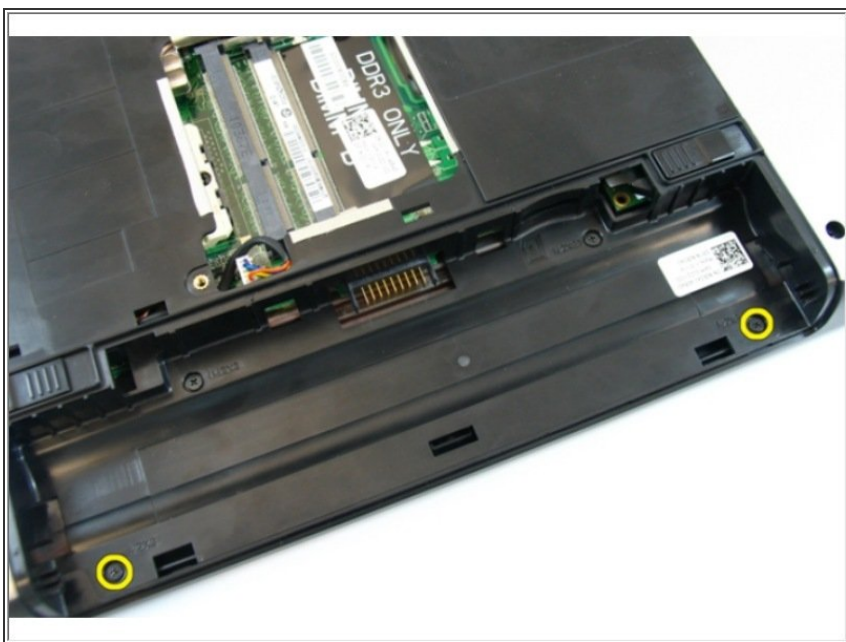
## Step 28 — Prying the Sides



- Pry up the sides of the palm rest and remove it from the computer.
- ★ If this is all you are doing Follow Step In Reverse if not Go to Next Step.



## Step 29 — Remove the Screws



- Remove the screws that secure the hinge cover.

## Step 30 — Press Down on the Hooks



- Press down on the hooks highlighted in the image.

## Step 31 — Removing the Hinge Cover



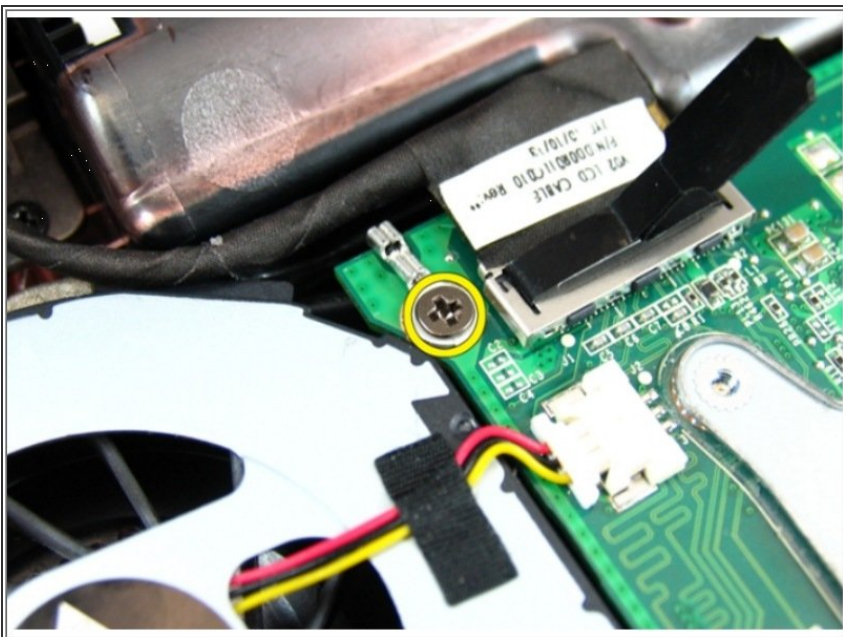
- Flip the computer around and remove the hinge cover from the side.
- ★ If this is all you are doing Follow Step In Reverse if not Go to Next Step.

## Step 32 — Remove the Screws



- Remove the screws that secure the display hinge.

## Step 33 — Loosen the Screw



- Loosen the screw that secures the low-voltage differential signaling (LVDS) cable.

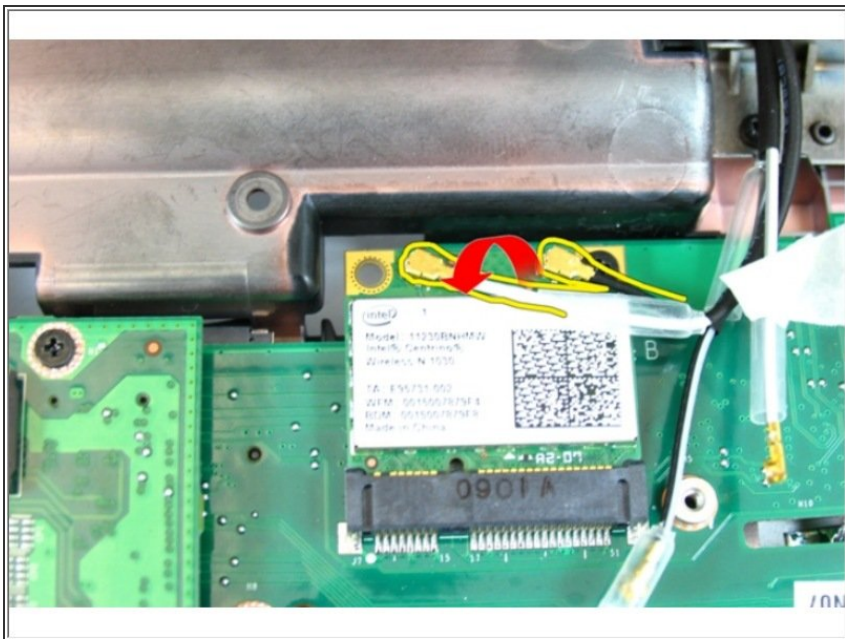
## Step 34 — Disconnecting the LVDS Cable



- Disconnect the LVDS cable from the system board.

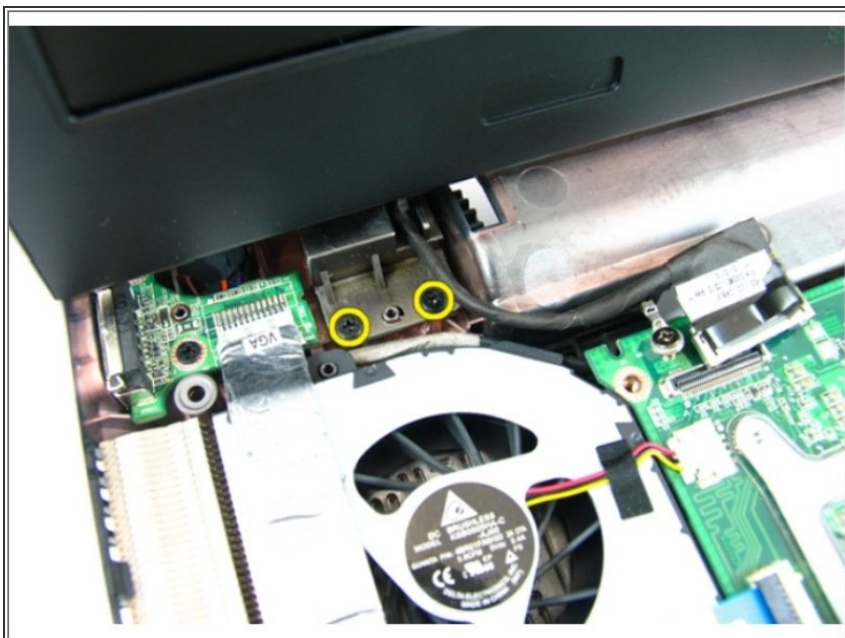


## Step 35 — Disconnecting the Wireless Cables



- Disconnect the wireless local area network (WLAN) antenna cable.

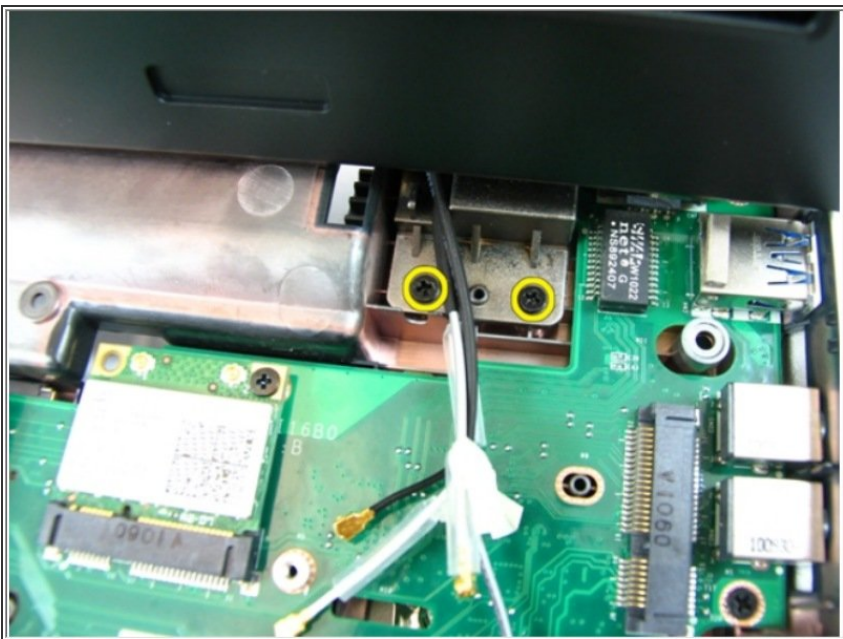
## Step 36 — Remove the Screws



- Remove the screws that secure the left hinge.

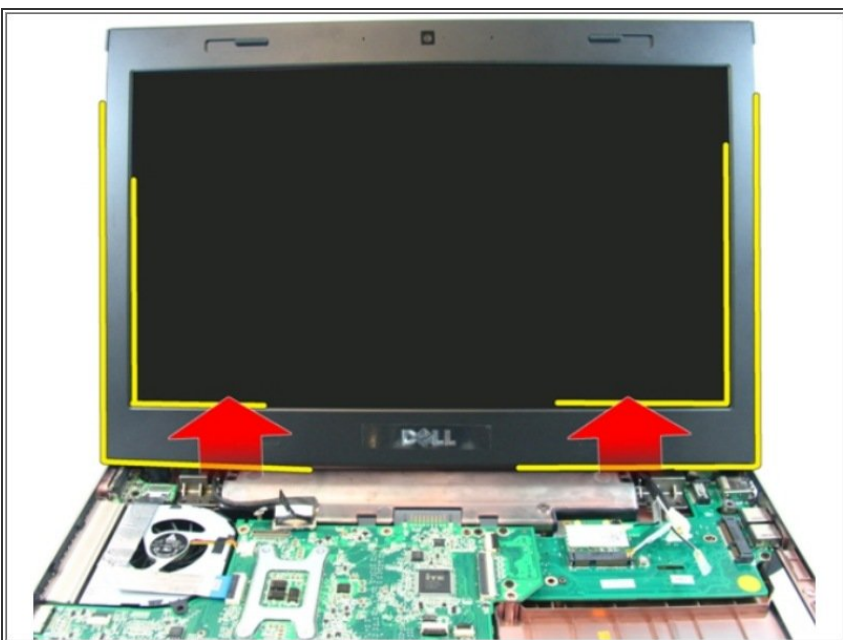


## Step 37 — Remove the Screws



- Remove the screws that secure the right hinge.

## Step 38 — Lifting the Display Assembly



- Lift the display assembly and remove it from the computer.
- ☑ If this is all you are doing Follow Step In Reverse if not Go to Next Step.

## Step 39 — Remove the Screw



- Remove the screw that secures the WLAN card.

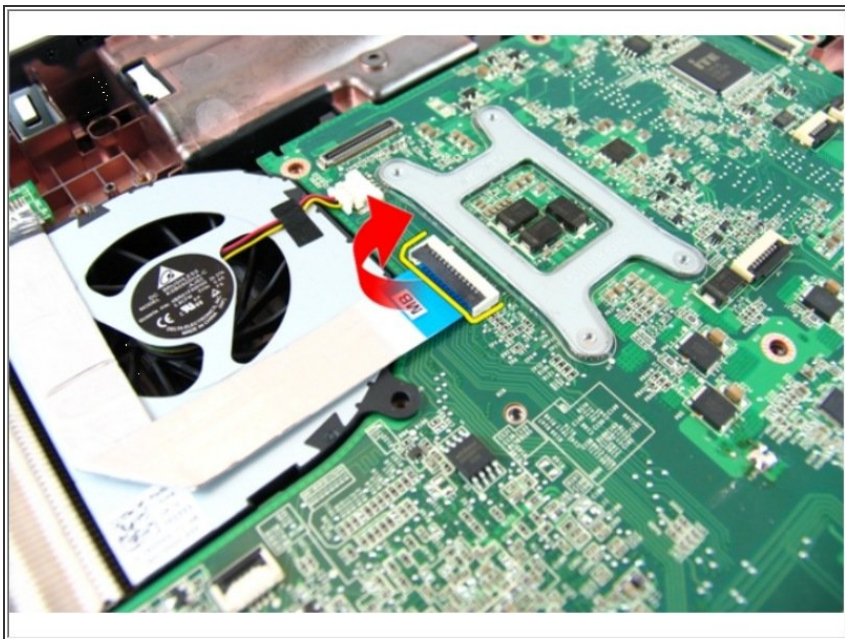
## Step 40 — Pull the Card



- Pull the WLAN card straight out of its socket and remove it.
- ☑ If this is all you are doing Follow Step In Reverse if not Go to Next Step.

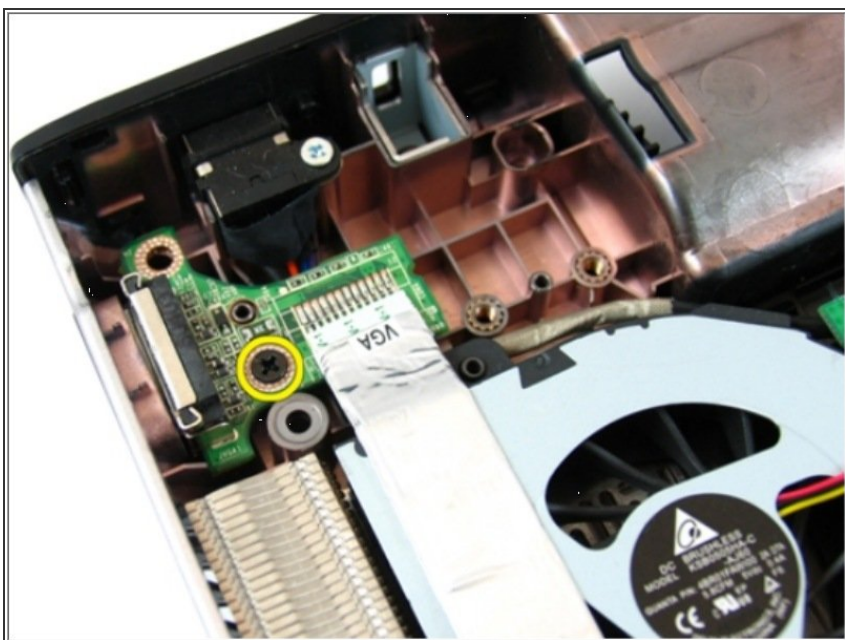


## Step 41 — Release the Latch



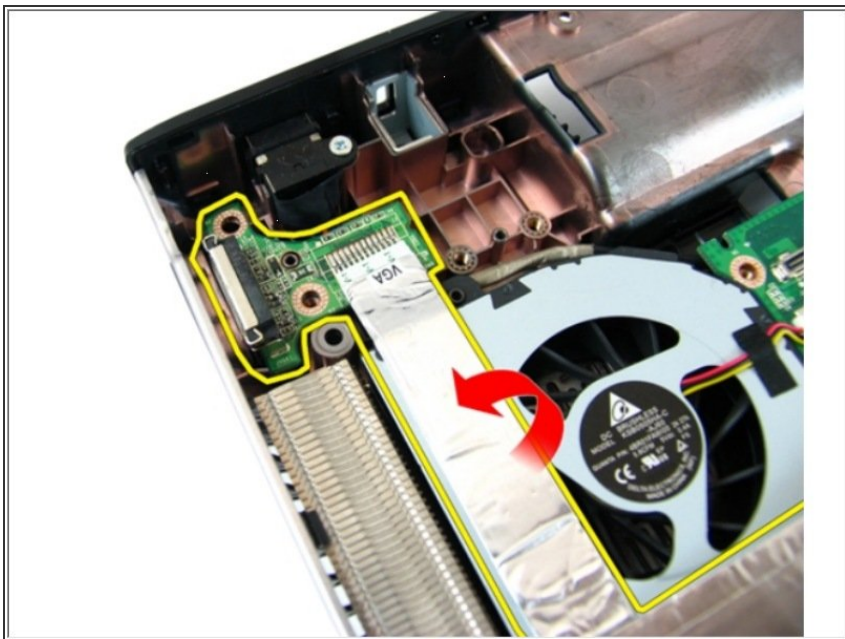
- Release the latch on the system board and then disconnect the VGA cable.

## Step 42 — Remove the Screw



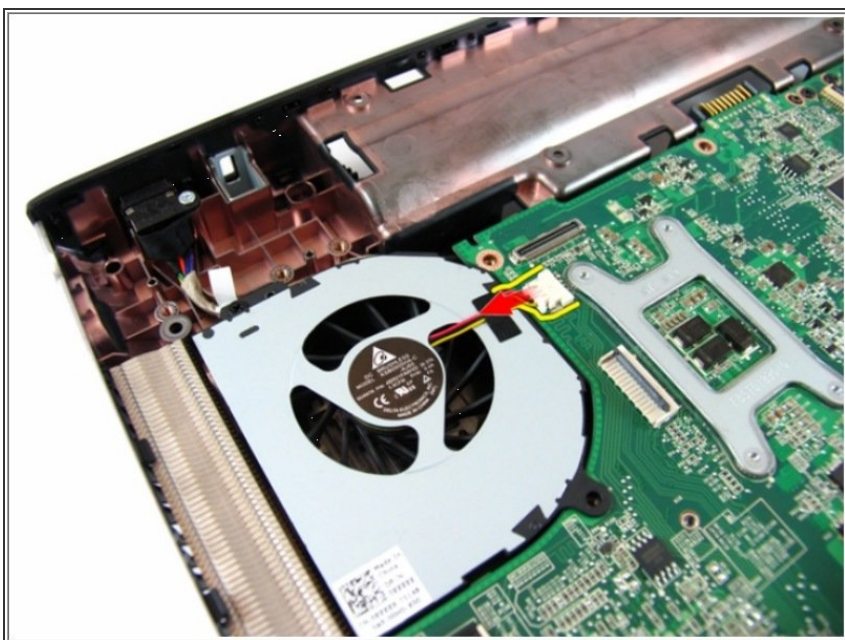
- Remove the screw that secures the VGA board.

## Step 43 — Remove the VGA Board



- Remove the VGA board from the chassis.
- ☑ If this is all you are doing Follow Step In Reverse if not Go to Next Step.

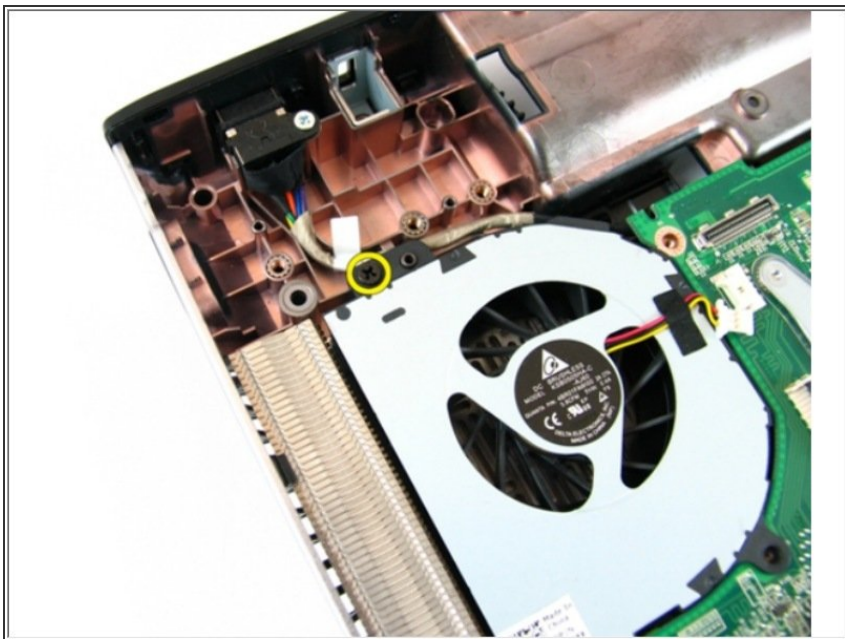
## Step 44 — Disconnect the System Fan Cable



- Disconnect the system fan cable from the system board.

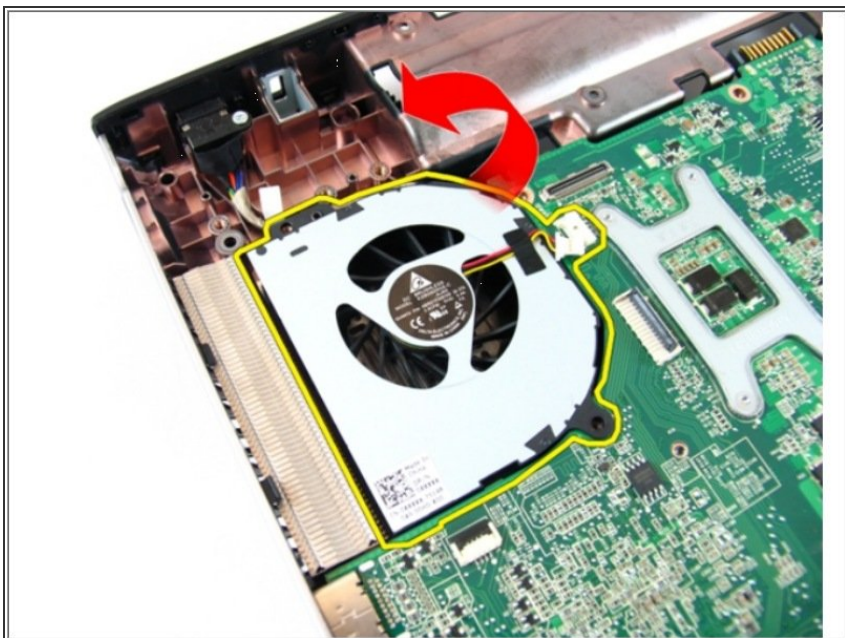


## Step 45 — Remove the Screw



- Remove the screw that secures the system fan.

## Step 46 — Remove the System Fan



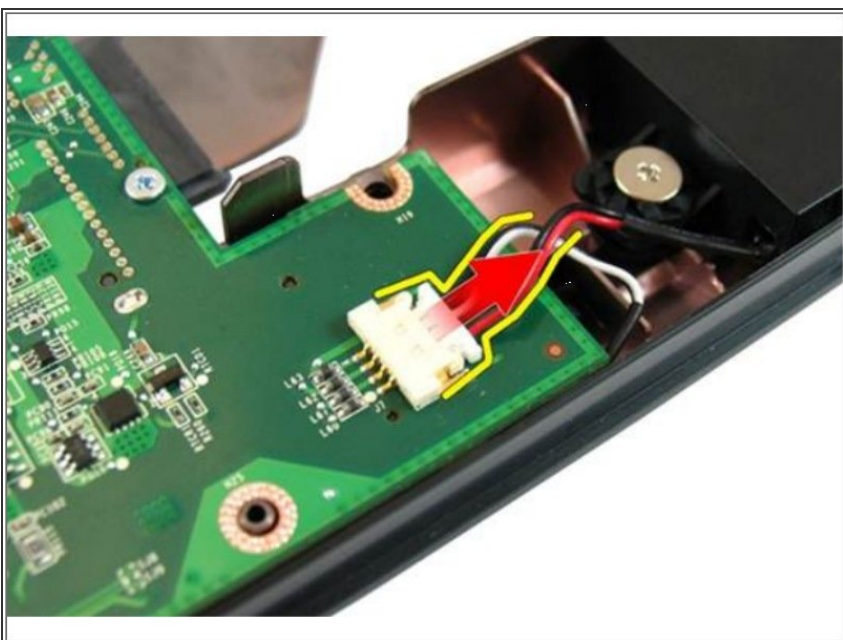
- Remove the system fan from the bottom base module.
- ☒ If this is all you are doing Follow Step In Reverse if not Go to Next Step.

## Step 47 — Disconnect the DC-in Cable



- Disconnect the DC-in cable connector from the system board.

## Step 48 — Disconnecting the Speaker Cable



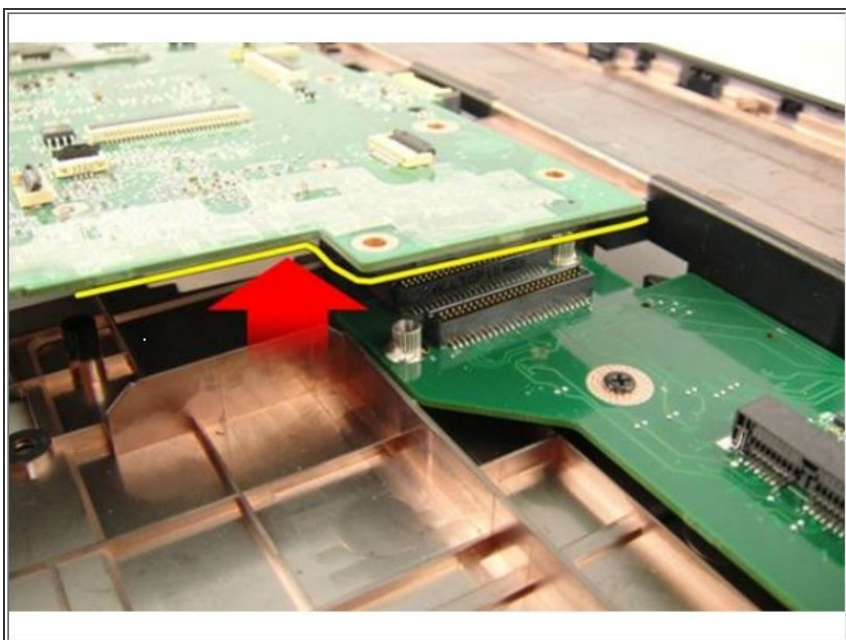
- Disconnect the speaker cable from the system board.

## Step 49 — Remove the Screws



- Remove the screws that secures the system board.

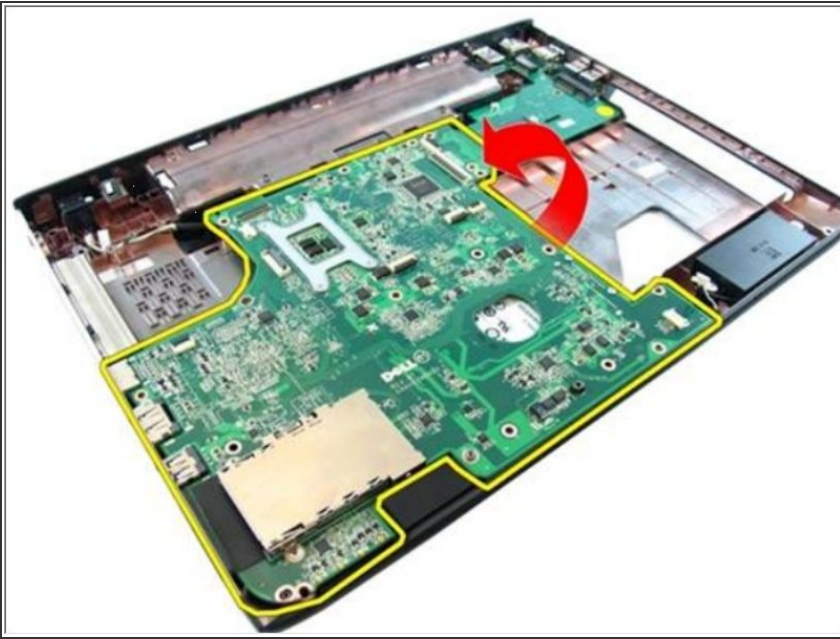
## Step 50 — Disconnecting the System Board



- Disconnect the system board from the Input/Output panel.



## Step 51 — Remove the System Board



- Lift and remove system board from the chassis.
- ★ If this is all you are doing Follow Step In Reverse if not Go to Next Step.