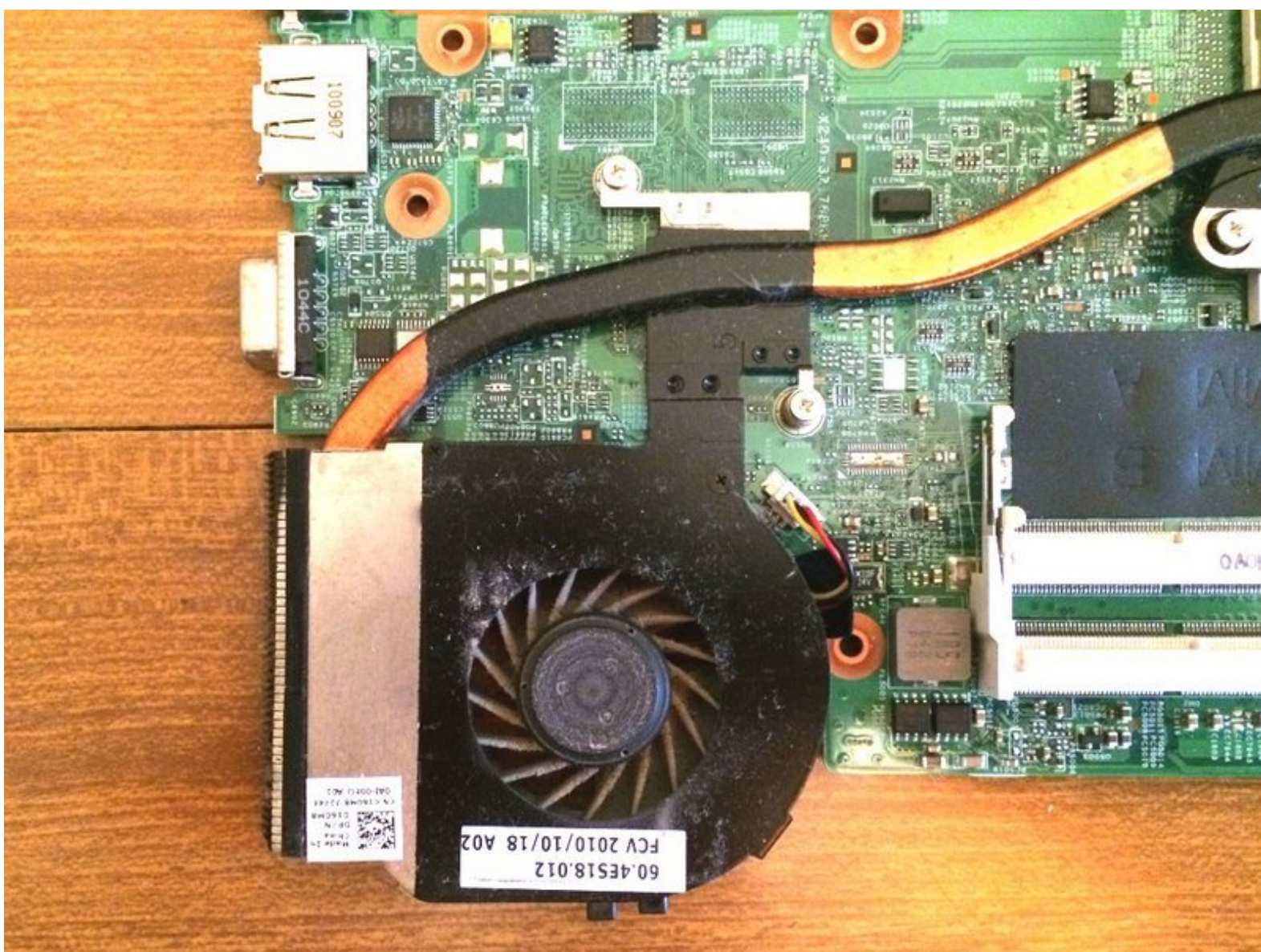




# Dell Vostro 3500 Fan Cleaning and Replacement

Written By: Philip Le Riche





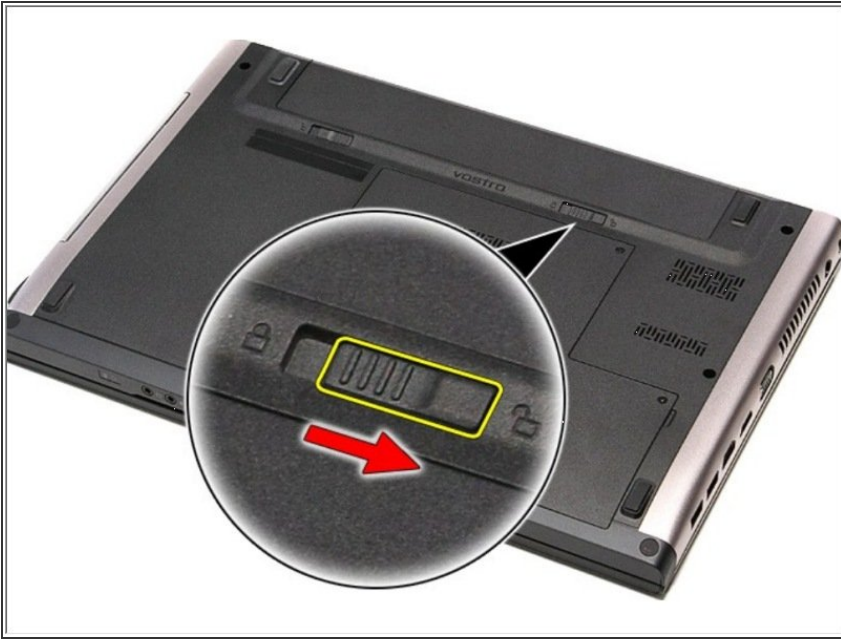


## TOOLS:

- [Phillips #0 Screwdriver](#) (1)
  - [Jimmy](#) (1)
-

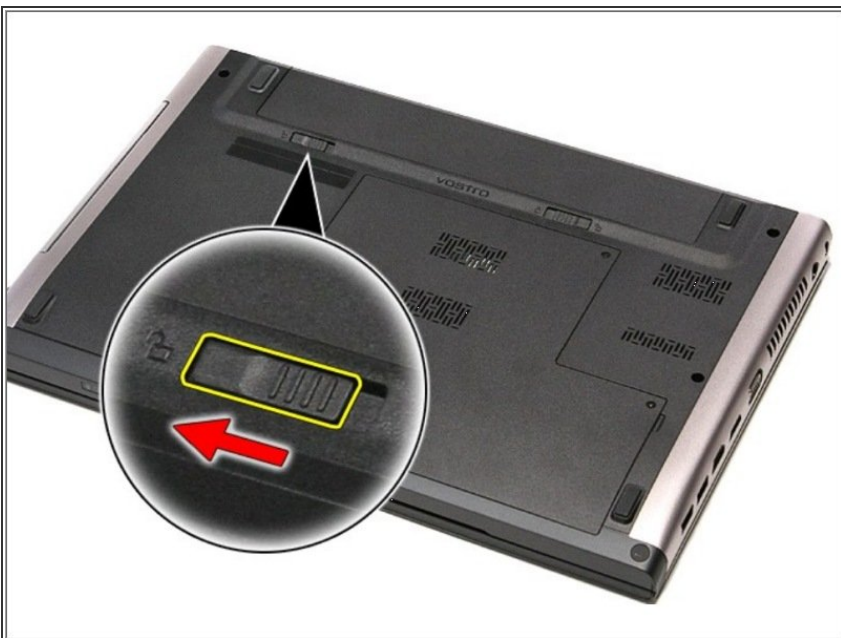


## Step 1 — Sliding the Battery Latch



- Flip the computer over.
- Slide the battery release latch to the unlock position.

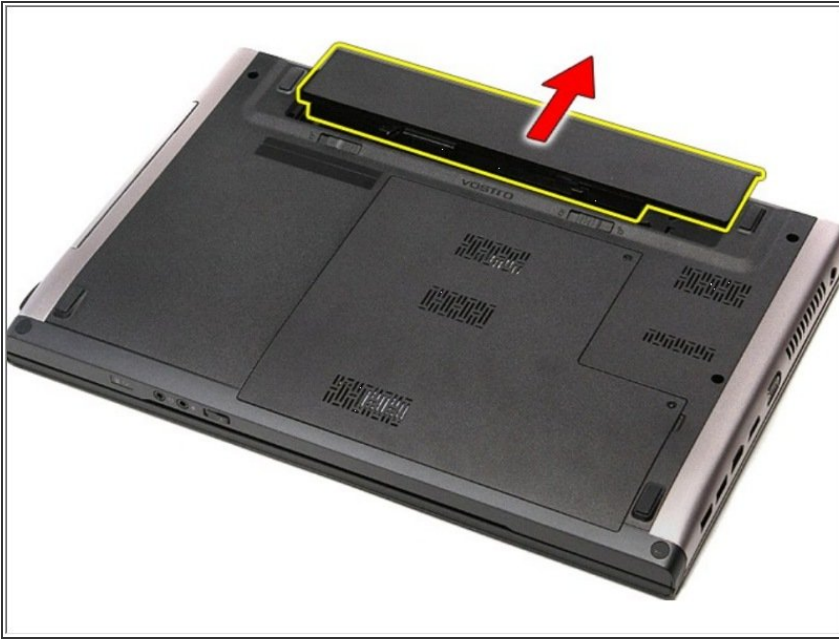
## Step 2 — Sliding the Battery Release Latch



- Slide the other battery release latch to the unlock position.



### Step 3 — Removing the Battery



- Slide the battery and remove it from the computer.

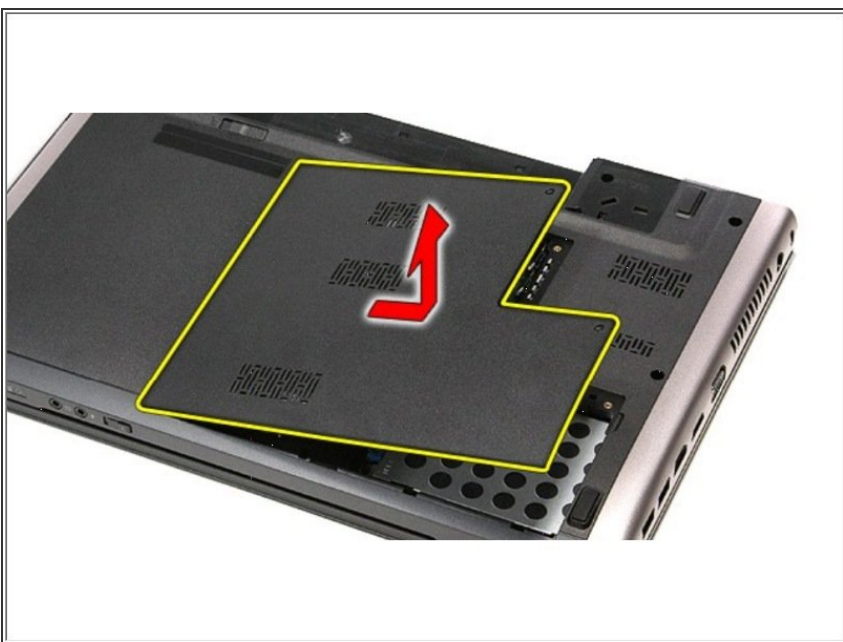
### Step 4 — Remove the Screws



- Turn the laptop over and remove two screws securing the service cover.



## Step 5 — Removing the Base Cover



- Prise up the service cover and remove it from the computer. Clips along the edges can be snapped open except for those on the left hand edge (as shown in the photo) which have to be disengaged after all the others by removing the cover in the direction shown.
- On resassembly, insert the clips on the left hand edge then snap all the others home by applying firm pressure along the other edges of the cover.

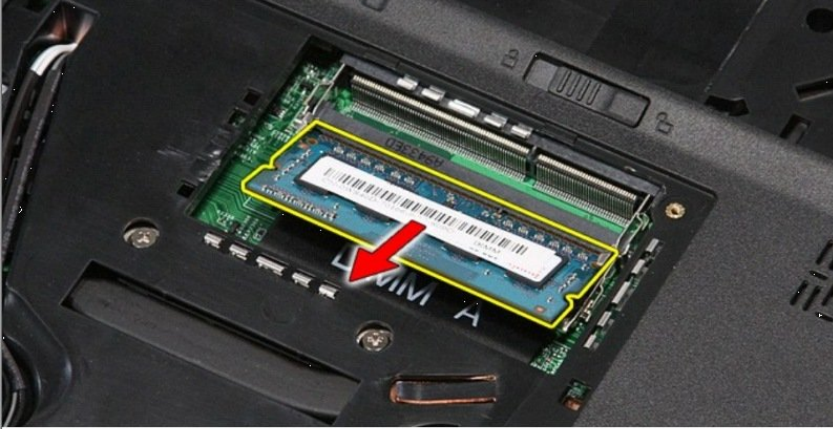
## Step 6 — Releasing the Memory Module



- Push apart the memory retention clips to release the memory module.



## Step 7 — Remove the Memory Module



- Remove the memory module from its connector on the system board.

## Step 8 — Remove the Screws



- Remove the screws that secure the hard-drive assembly to the computer.

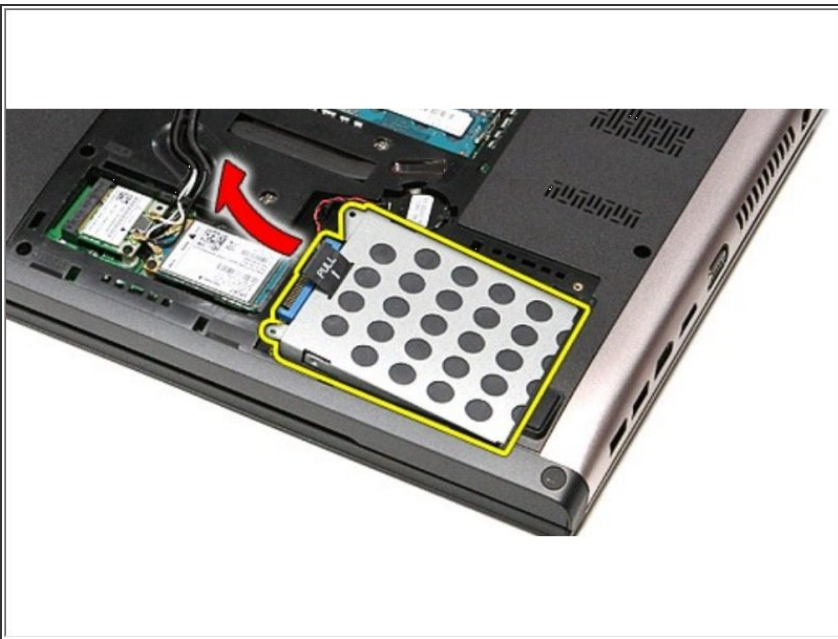


## Step 9 — Sliding the Hard-Drive Assembly



- Slide the hard-drive assembly towards the center of the computer.

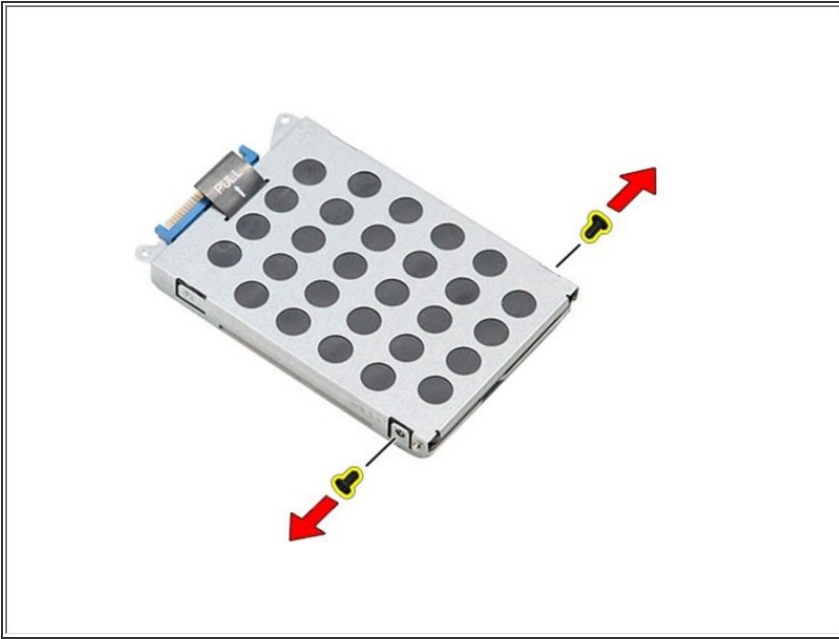
## Step 10 — Lifting the Hard-Drive Assembly



- Lift the hard-drive assembly up and away from the computer.

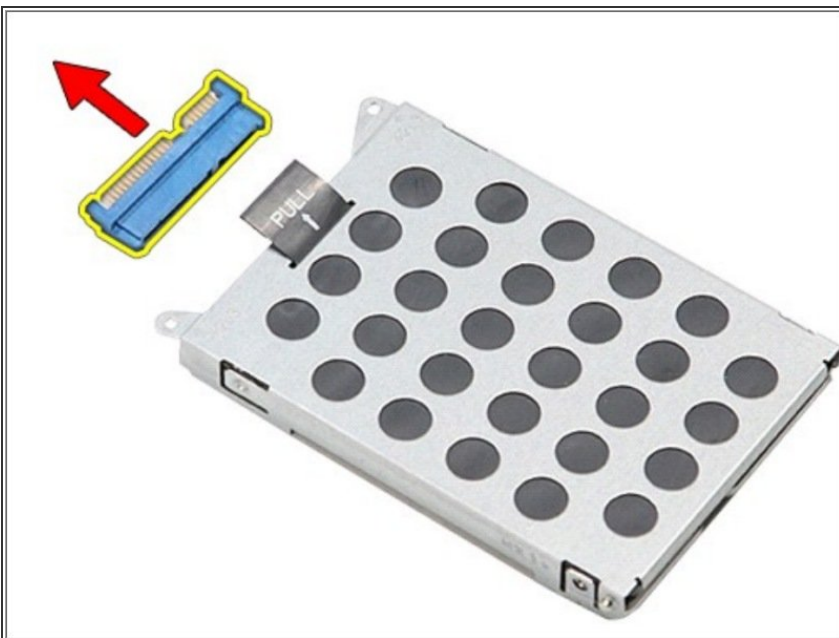


## Step 11 — Remove the Screws



- Remove the screws that secure the hard-drive bracket to the hard drive

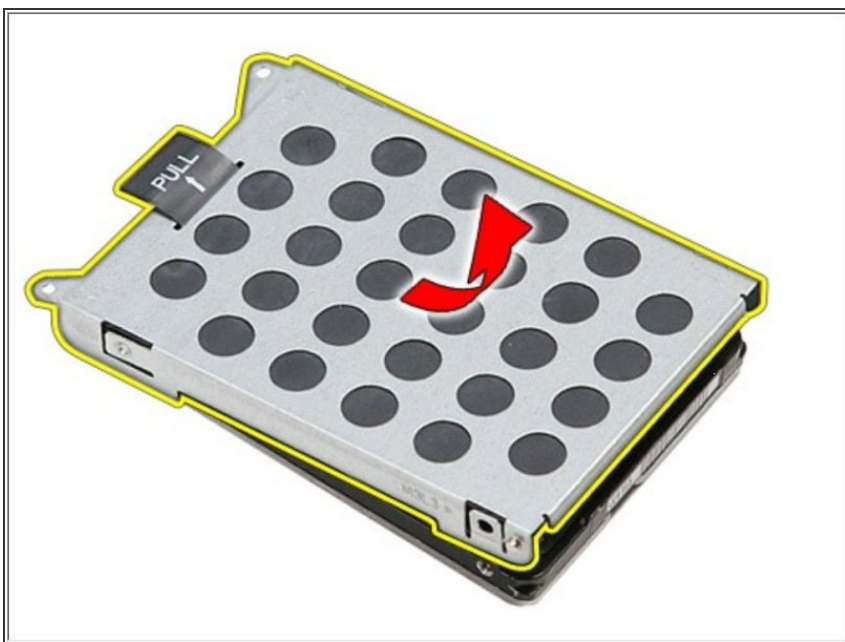
## Step 12 — Remove the Hard-Drive Adapter



- Remove the hard-drive adapter from the hard-drive assembly.

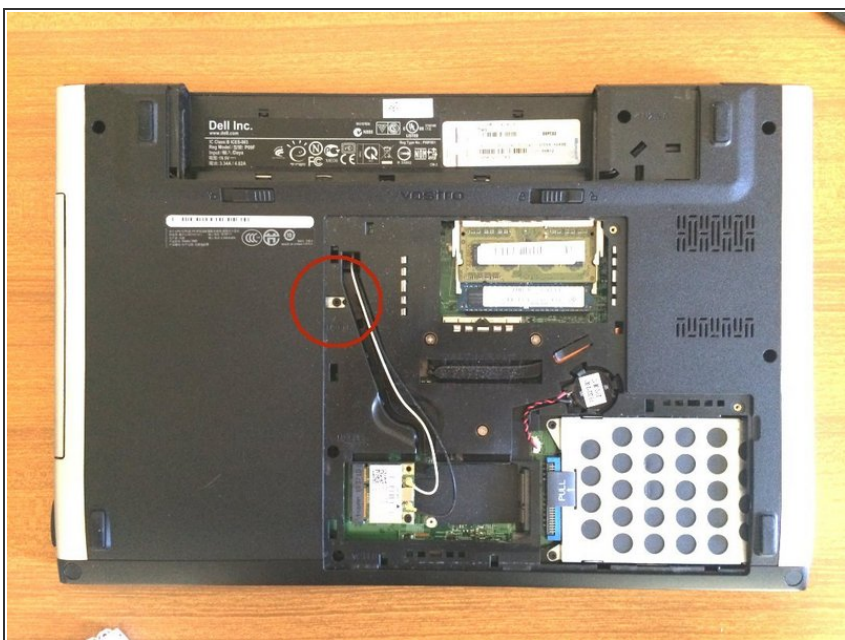


## Step 13 — Lifting the Hard-Drive Bracket



- Lift the hard-drive bracket up and away from the hard drive.

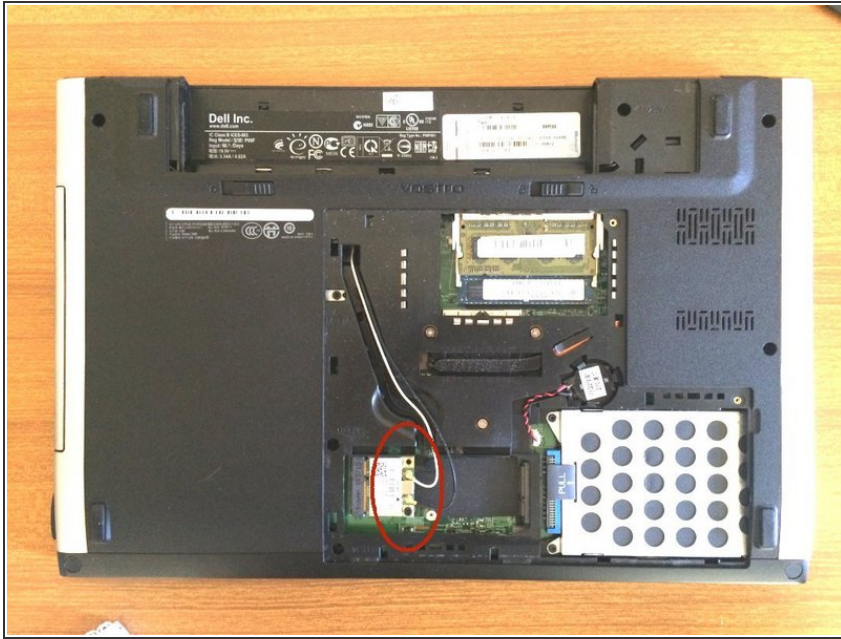
## Step 14 — CD/DVD drive removal



- Remove a single screw from under the service cover.
- You should now be able to slide the CD/DVD drive out.



## Step 15 — WiFi card removal



- Gently snap off the two aerial connectors from the WiFi card.
- ⓘ On reassembly they simply snap back on with firm pressure, but first make sure they are positioned correctly over their sockets.
- Remove a single screw adjacent to one of the aerial sockets retaining the WiFi card, then lift it out.
- ⓘ On reassembly, ensure that the WiFi card is fully inserted into its socket before angling it down and reinserting the screw.

## Step 16 — Keyboard



- There are 4 tabs along the top of the keyboard and two along each side which need to be released. The iFixit Jimmy is ideal for this, but you can use a thin spatula.

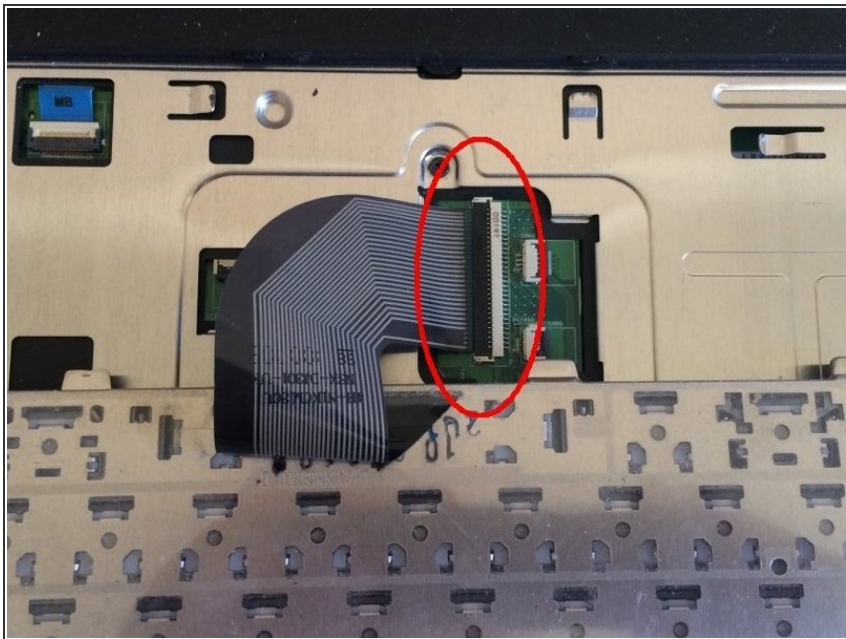


- Feel along the gap with the jimmy until you come to a tab. Angle the jimmy away from the keyboard in order to release the tab. As you release each tab, gently lift that part of the keyboard in order to



encourage the next tab to disengage, but take care not to bend it.

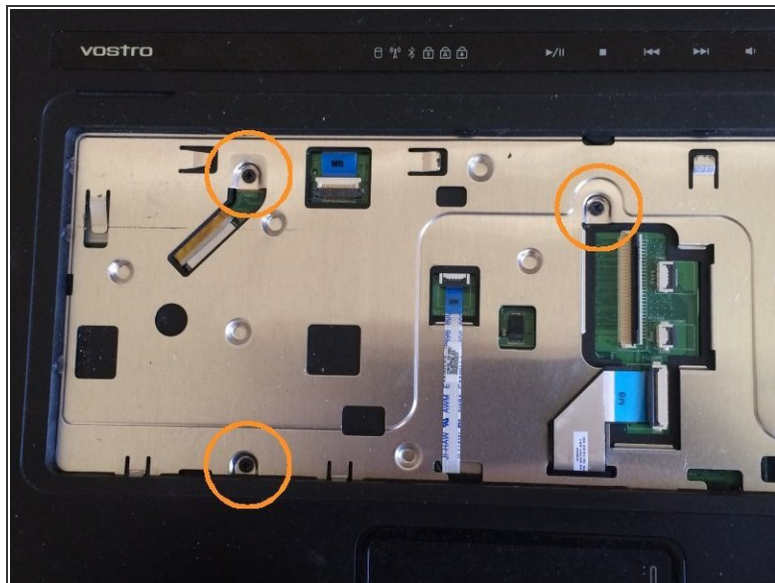
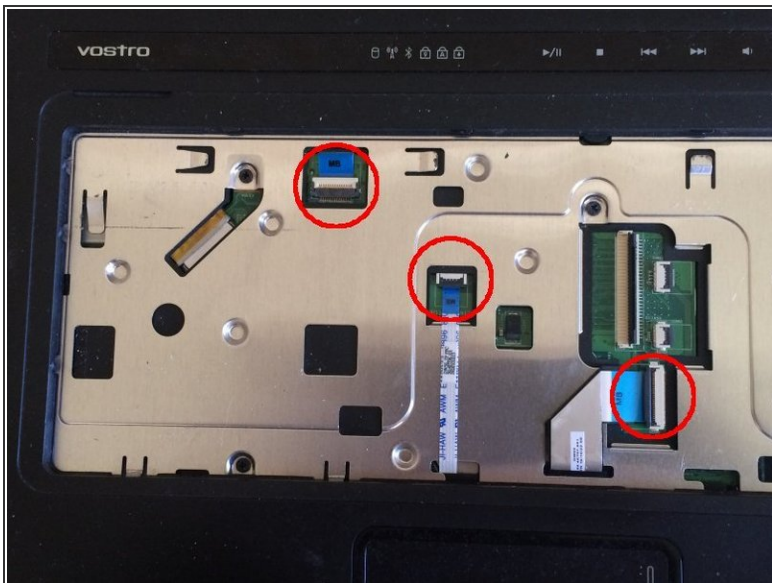
## Step 17



- Lift the top edge of the keyboard and turn it over, laying it flat.
- Very gently lift the black retaining tab on the keyboard ribbon and withdraw the ribbon.
- ⓘ On reassembly, make sure the ribbon is fully inserted in its socket before pressing down the tab.

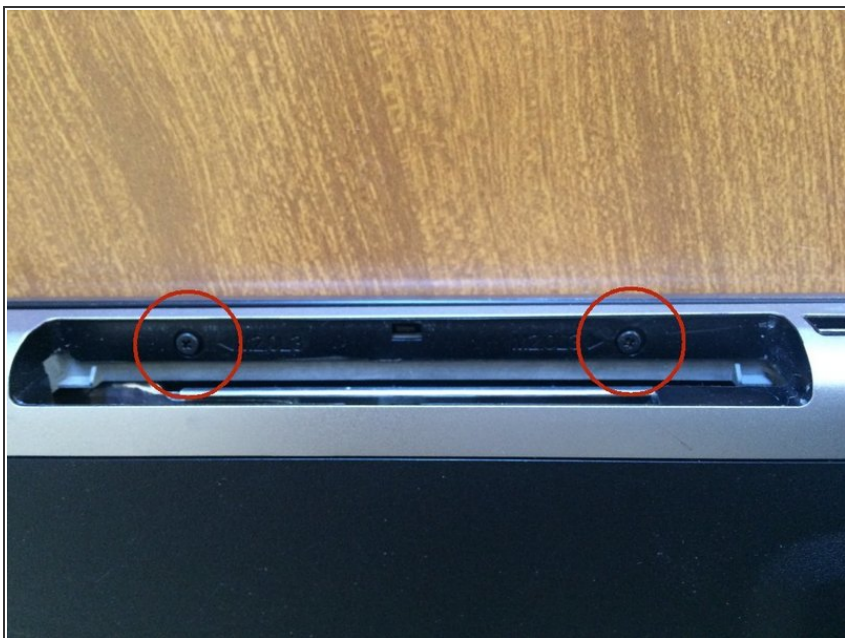


## Step 18 — Motherboard



- In the well beneath the keyboard, disconnect 3 ribbon cables by gently lifting the locking bar then withdrawing the ribbon.
- Remove 3 screws.

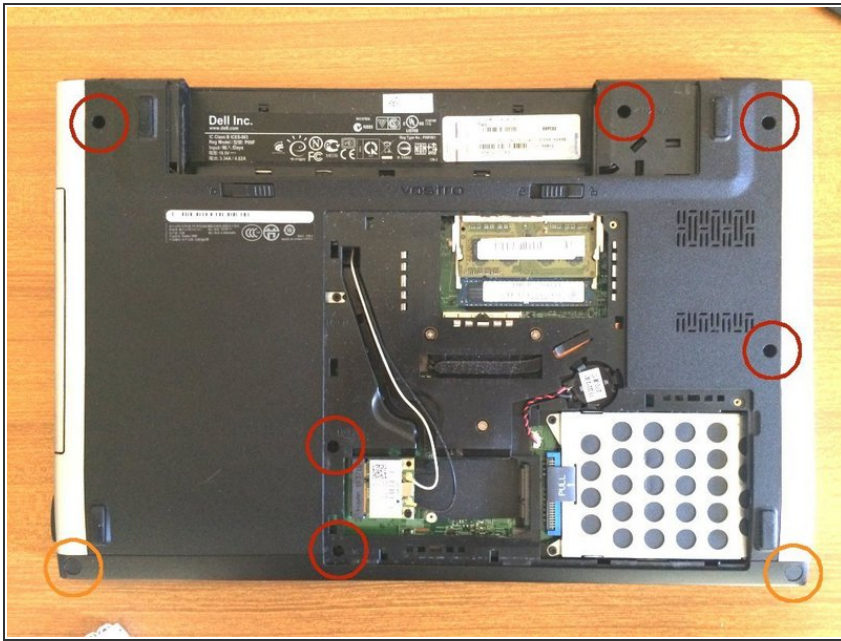
## Step 19



- With the laptop closed, lay it upside down on the bench and remove 2 screws from the CD/DVD bay opening.

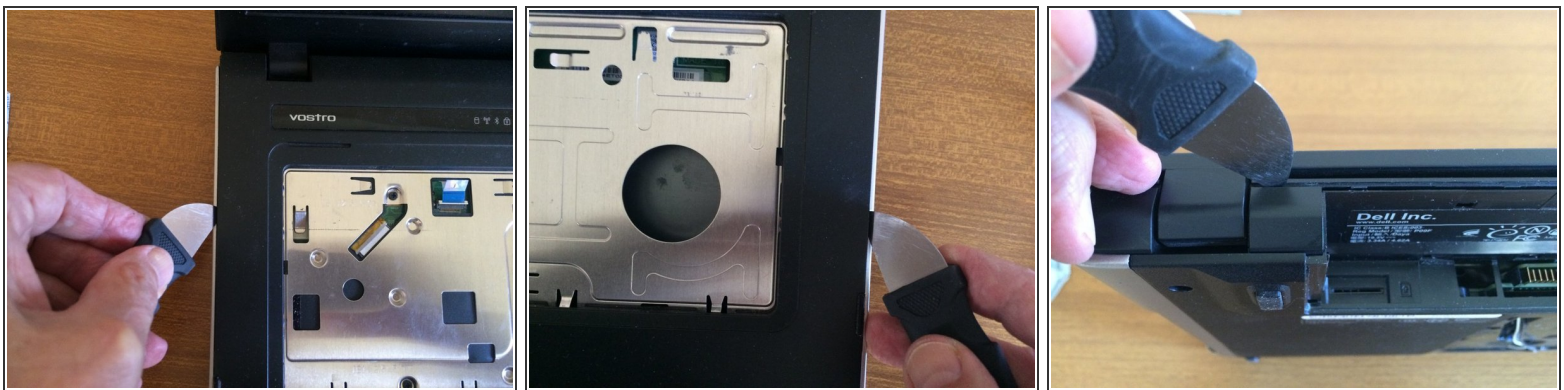


## Step 20



- Remove 6 screws from the base of the laptop.
  - Using a small flat screwdriver or a pointed knife, remove the adhesive covers from 3 more screws in the front corners of the laptop. Remove the screws.
- ⚠ DO NOT remove 3 silver-headed screws between the WiFi card and the hard disk. These secure the processor heat sink.

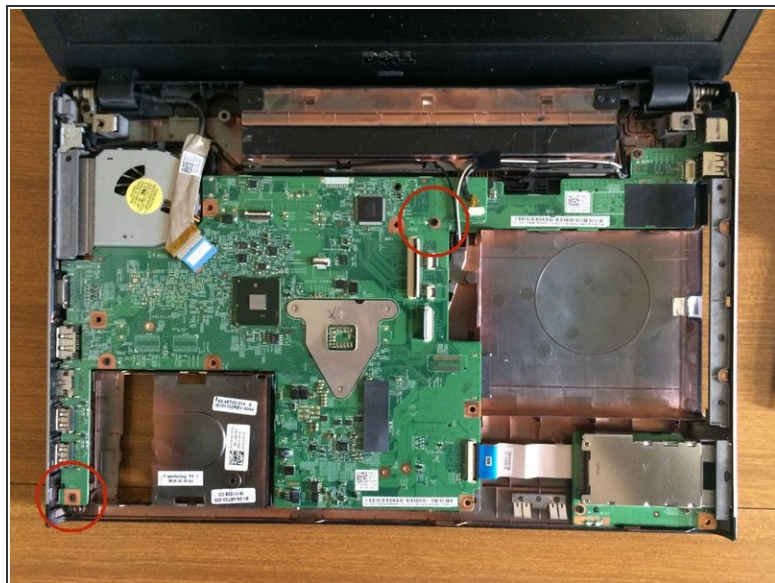
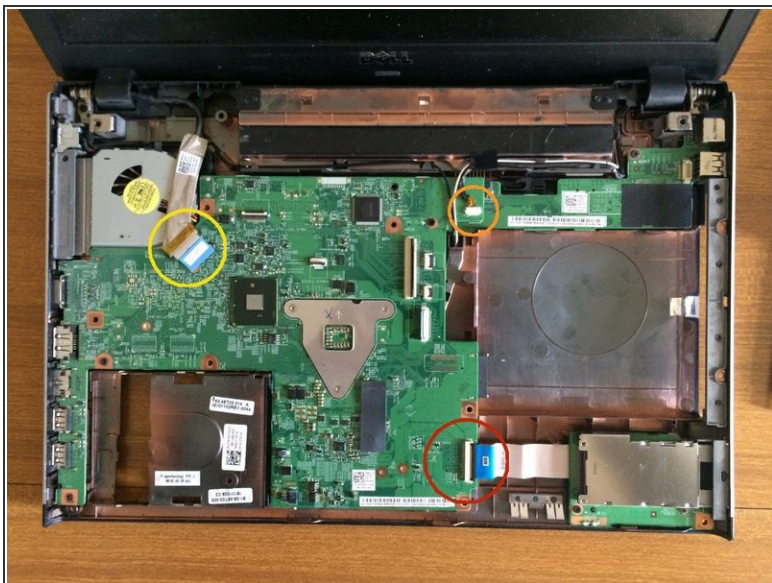
## Step 21



- Separate the top cover of the laptop by inserting a jimmy or similar tool into the crack and angling it so as to lift the cover. Do this on both sides, the rear, and the front.
- Lift off the front cover. If you feel you are having to force it, it'll be because you omitted to remove one or more screws.



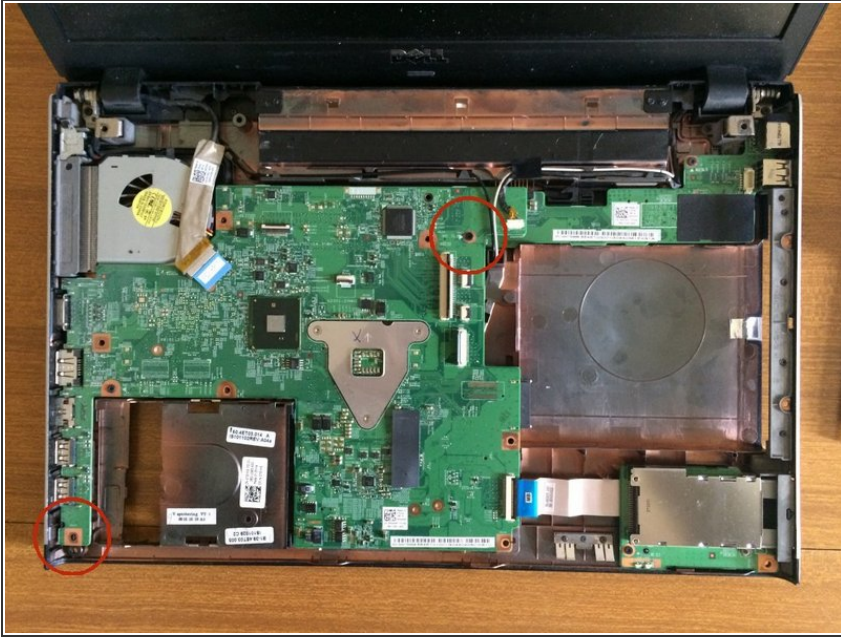
## Step 22



- Lift the locking tab and remove the ribbon cable on the right hand lower edge of the motherboard.
- Disconnect the multi-way connector on the top edge of the motherboard. Do not pull on the wires, but rather rock the body of the connector from side to side until it easily pulls free.
- Gently lift off the video cable connector.



## Step 23



- Remove two screws securing the motherboard.
- ⓘ On reassembly, note that these two screws (only) have triangular indicator marks against them. The other holes are for screws which you removed from the bottom of the laptop.
- You should now be able to lift out the motherboard out of the shell, gently easing the connectors on the left hand edge out of the shell.
- ⓘ As you lift out the motherboard it's a good idea to lean the screen against some kind of support as it will no longer be counter-balanced by the base.



## Step 24 — Fan removal - 1



- Disconnect the fan connector by rocking it back and forth until it easily pulls free. Only pull gently on the wires.
- Remove 3 screws from the fan cover. Do not attempt to remove the cover.
- Disengage a clip on the side of the fan cover.



## Step 25 — Fan removal - 2



- Turn the motherboard and remove the fan in the direction shown.
- you will probably find a matted layer of dust and fluff on the cooling fins. Remove this then clear further dust either by blowing through the fins from the outside or by applying a vacuum cleaner to the inside.
- Remove dust from the fan blades with a brush or vacuum cleaner.

To reassemble your device, follow these instructions in reverse order.