



Dell Vostro 3550 Disk Drive Tray Latch Replacement

This guide will instruct you on how to replace the disk drive tray latch on the Dell Vostro 3550.

Written By: Dylan J. Souza



INTRODUCTION

This guide will guide the user through all of the necessary steps to replace the disk drive tray latch on their Dell Vostro 3550. This component may need to be replaced if the user notices that the tray will not eject or close properly. The cause of this problem is that the latch mechanism is broken inside the disk tray. This is a common problem that occurs when users close their disk drive with a lot of force.



TOOLS:

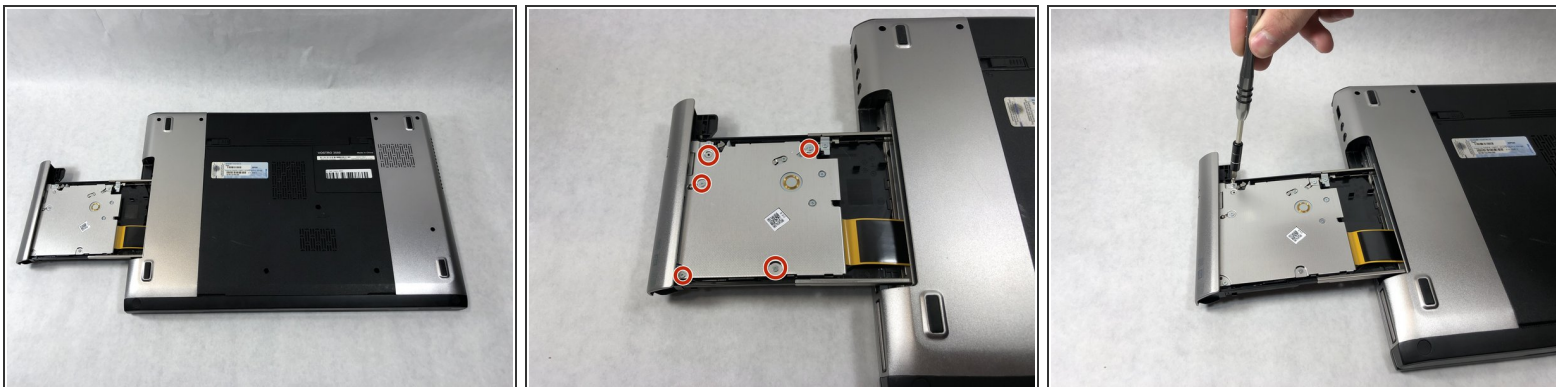
- [Phillips #0 Screwdriver](#) (1)
-

Step 1 — Disk Drive Tray Latch Mechanism



- Push a paperclip that is bent straight into the small pin hole on the right of the release button.
- When 3/4" of the paperclip is inserted the tray will pop open.
- Pull the disk tray out as far as it will extend.

Step 2



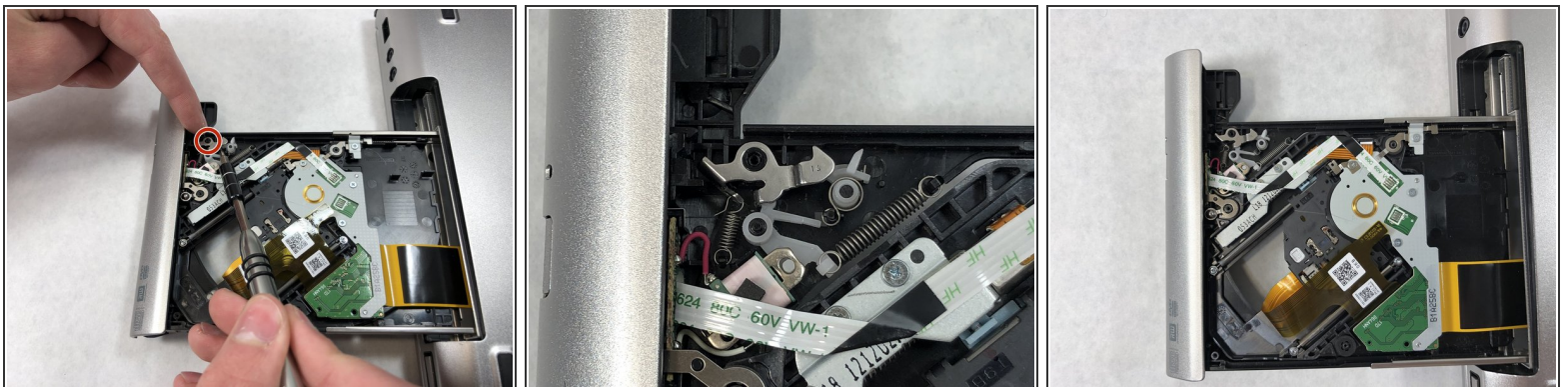
- Flip the laptop over and position it so the disk drive is in front of you.
- Remove the five 5mm Phillips #0 screws fastening the top plate to the disk tray.

Step 3



- Remove the top plate of the disk tray and place it off to the side.

Step 4



- Remove the single 5mm Phillips #0 screw securing the latch mechanism to the disk drive.
- Pull the damaged latch away from the disk drive and replace with the new latch.

To reassemble your device, follow these instructions in reverse order.