



Dell Vostro A860 Display Replacement

This guide summarizes the steps needed to remove the computer's display screen LCD.

Written By: Joshua Dennis



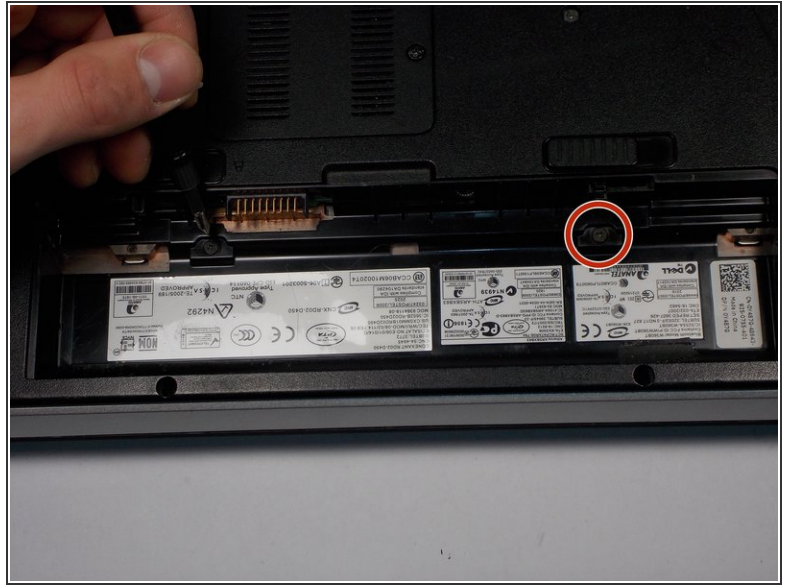
INTRODUCTION

The screen bezel and LCD display may come factory assembled with a glue or adhesive holding it together. When removing the display must be held outward to remove the screen.

TOOLS:

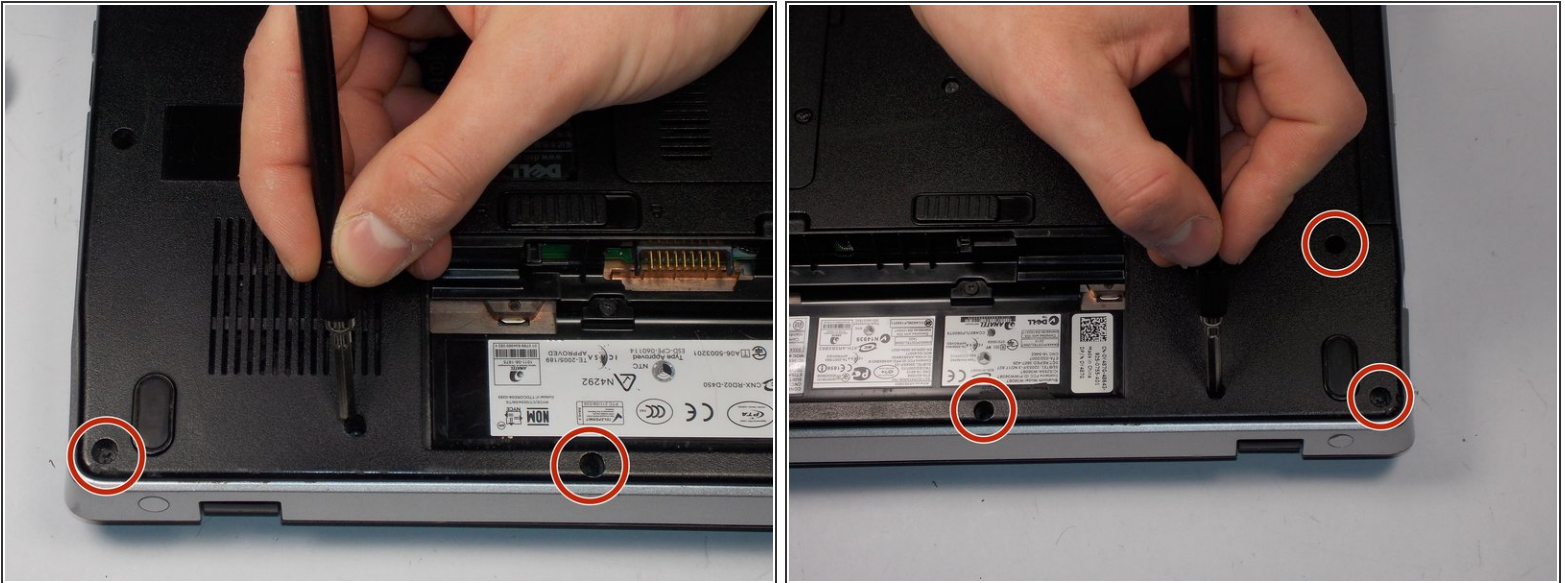
- [Phillips #000 Screwdriver](#) (1)
 - [iFixit Opening Tools](#) (1)
-

Step 1 — Keyboard



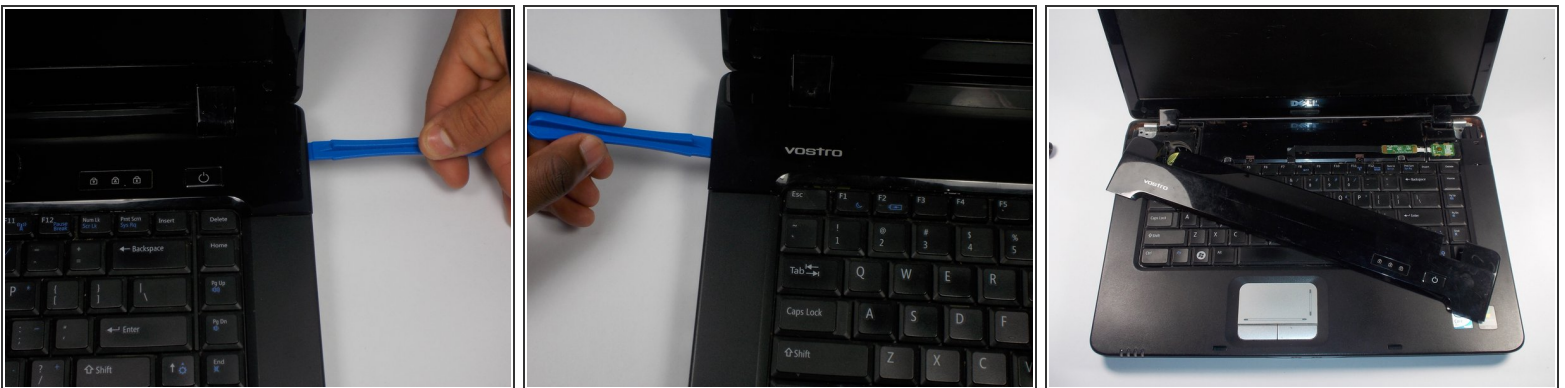
- ① Make sure the computer is powered down before beginning your work
- Remove the battery and set it aside, there is a small clip that slides to free the battery.
- Unscrew the two 4.7mm screws below the battery.

Step 2



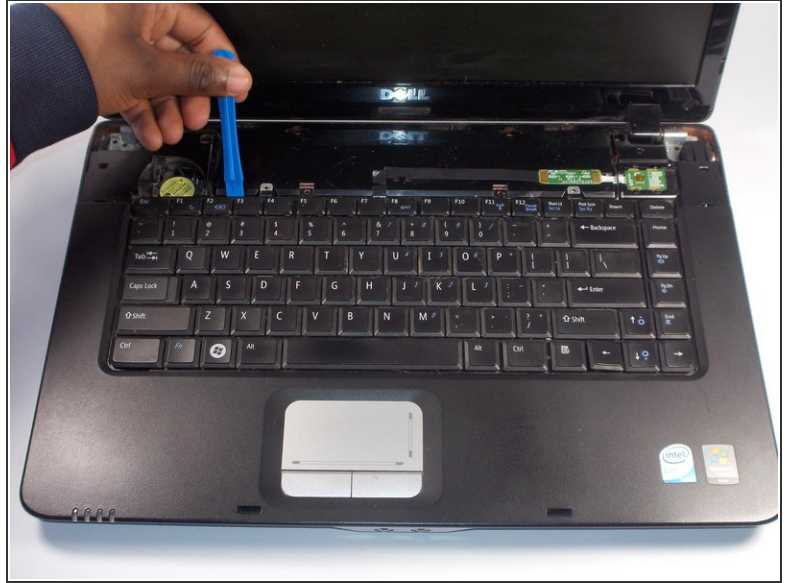
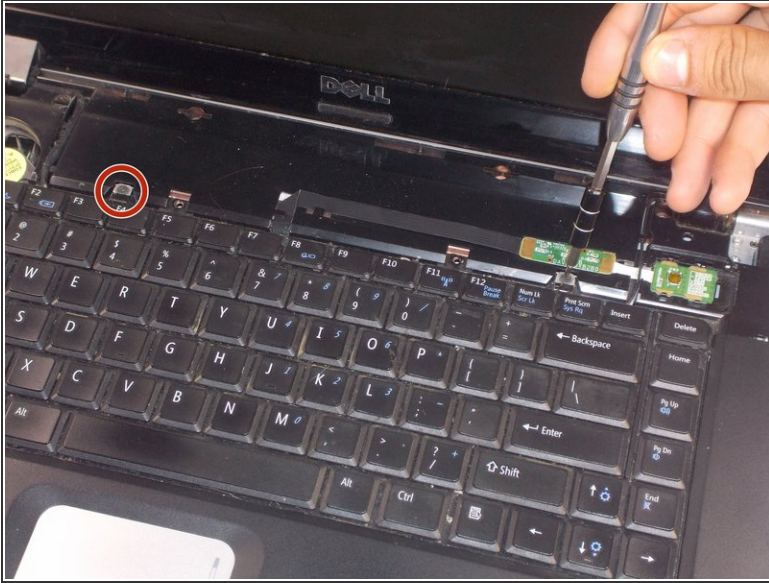
- Remove seven 8.6mm screws from the left and right side of the battery compartment
- ⓘ There are 2 screws to the left of the compartment, 3 to the right, and 2 along the bottom side.

Step 3



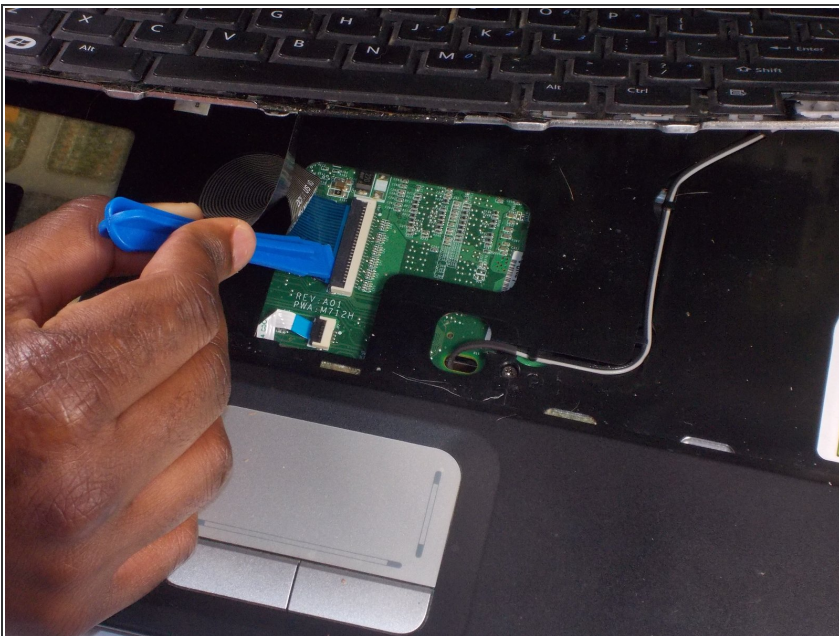
- Flip the laptop over and open it up.
- Using a plastic opening tool carefully pry up along the edge of the plastic bezel at the top of the keyboard.
- ⓘ Getting the lip of the plastic opening tool under the edge of the bezel and moving it along the right and left edges helps to make removal easier.

Step 4



- Remove two 5.5mm screws from the top of the keyboard
- Using a plastic opening tool push inward along the edges of the keyboard to release the holding clips

Step 5



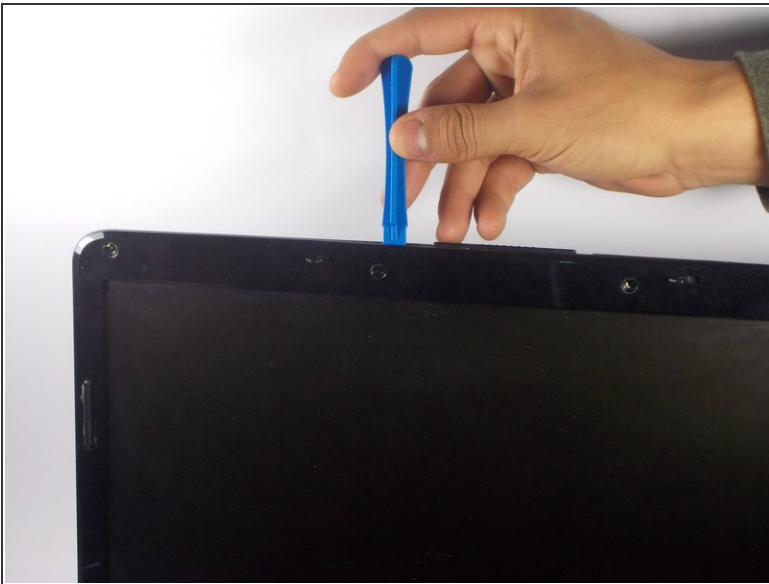
- Lift the keyboard upwards
- ⚠ Be careful not to pull too hard on the keyboard as it is still attached to the laptop by the ribbon connector.
- Using the plastic opening tool push up on the black clip holding the connector ribbon.
- Pull out the ribbon connector to remove the keyboard.

Step 6 — Display



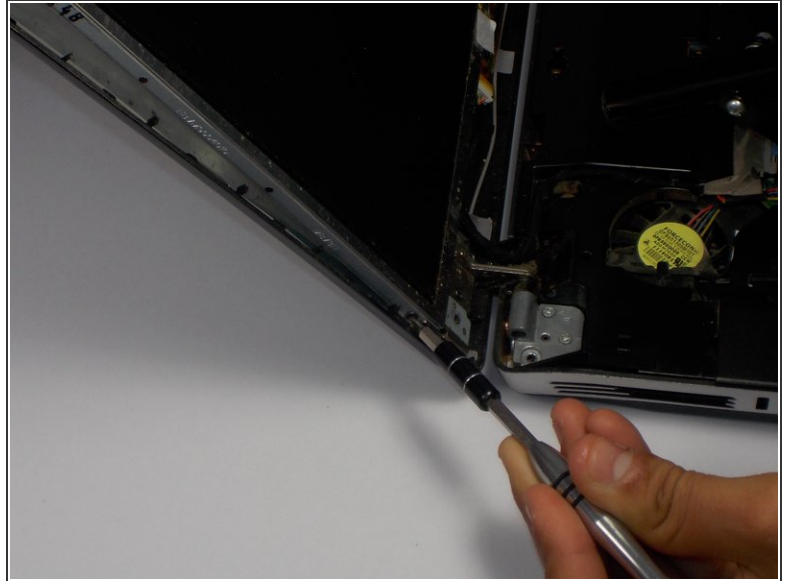
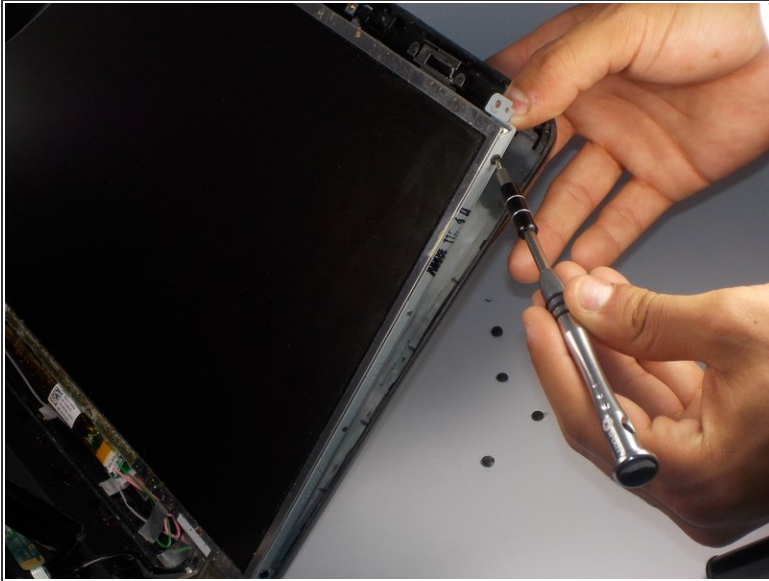
- Using a plastic opening tool remove the rubber bumpers covering the display bezel screws.
- Remove the six 5.5mm screws holding the bezel on.

Step 7



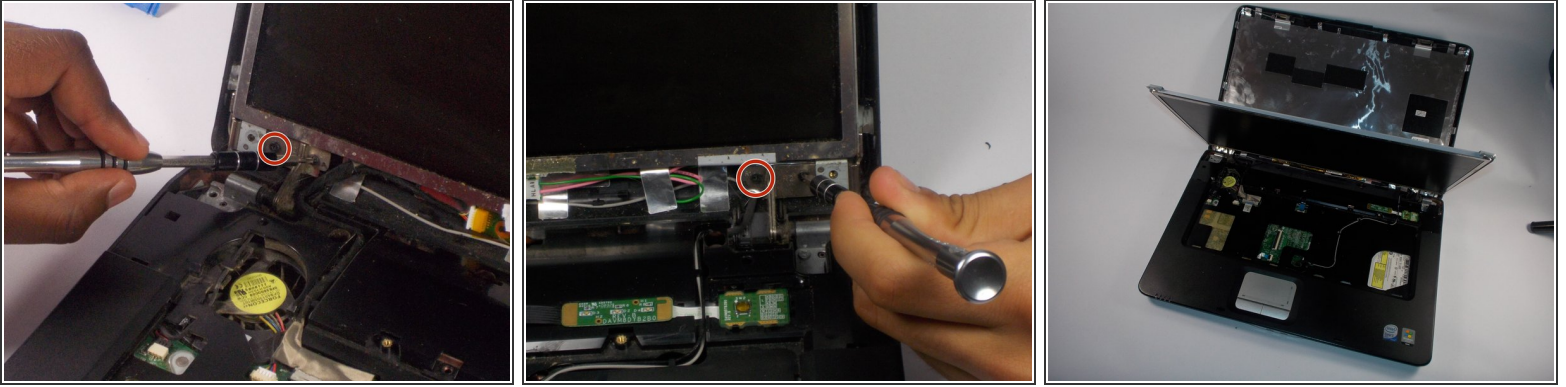
- Using a plastic opening tool carefully pry along the edges of the screen bezel to remove it.
- ❗ Once the opening tool is inserted under the lip of the bezel simply sliding it along the edge will release the retaining clips.

Step 8



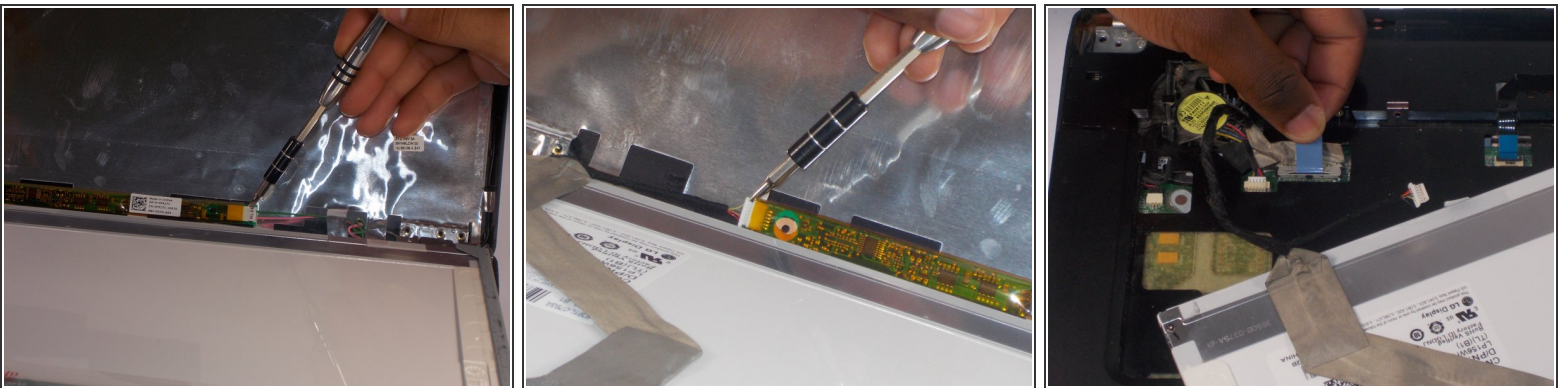
- Remove the following screws:
 - Two 4.7mm screws from the left side of the display.
 - Two 4.7mm screws from the right side of the display.

Step 9




- Remove the following screws:
 - Two 5.5mm screws from the left display mount.
 - Two 5.5mm screws from the right display mount.
- Gently pull the display mount frame outward to release the inserts holding the display screen in place. This will allow the screen to lean forward, revealing the connectors.

Step 10



- Using a flat headed tool or nail, remove the wires from the right connector behind the display.
- Using a flat headed tool or nail, disconnect the wires from the left connection behind the display.
- Pulling upward gently on the tab, remove the magnetic connection in the top left of the tray area under the keyboard.

 The screen should now be able to freely be removed from the laptop.

To reassemble your device, follow these instructions in reverse order.