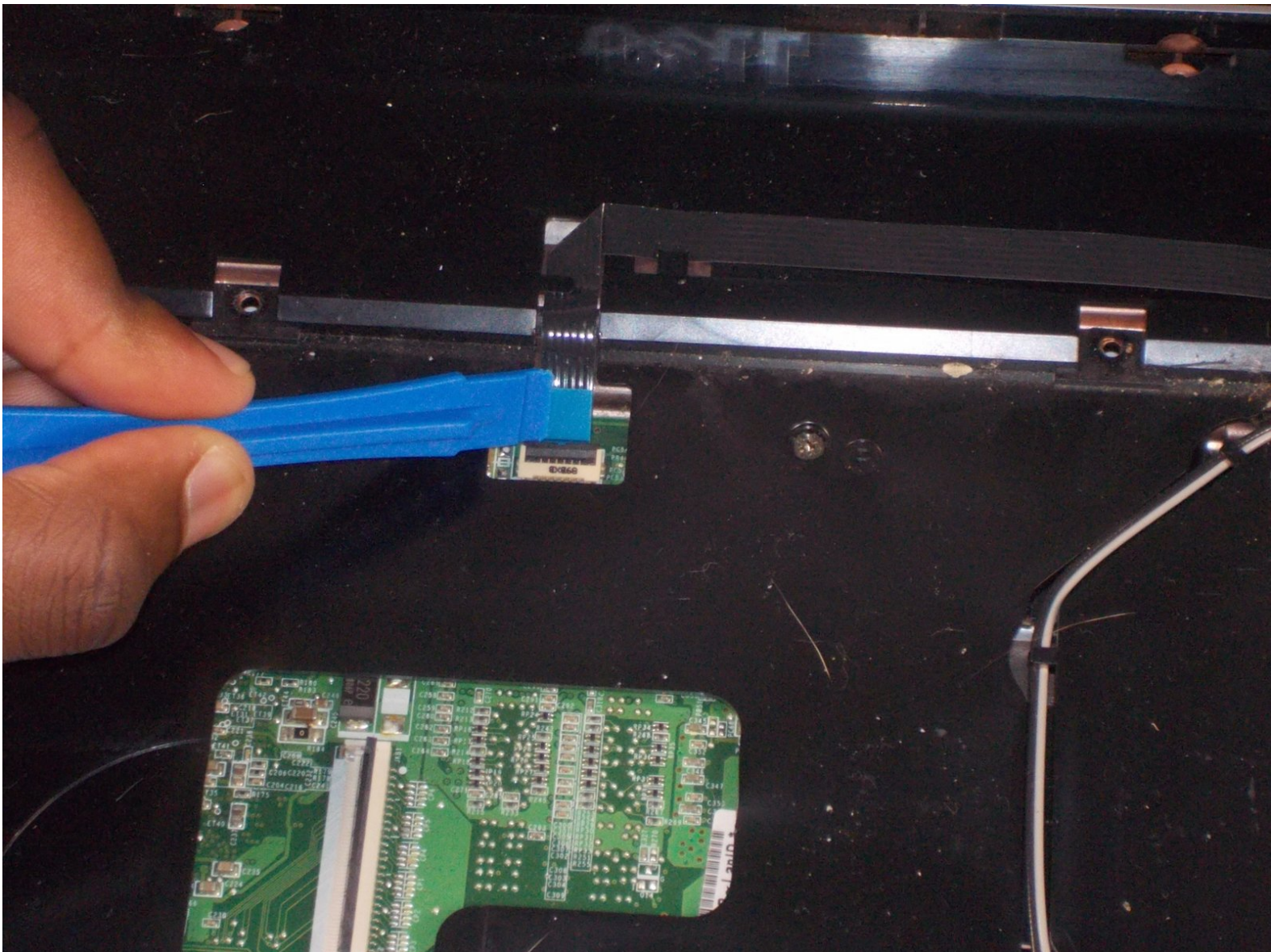




# Dell Vostro A860 Power Button Replacement

This guide shows the steps necessary to replace a faulty power button.

Written By: Joshua Dennis



## INTRODUCTION

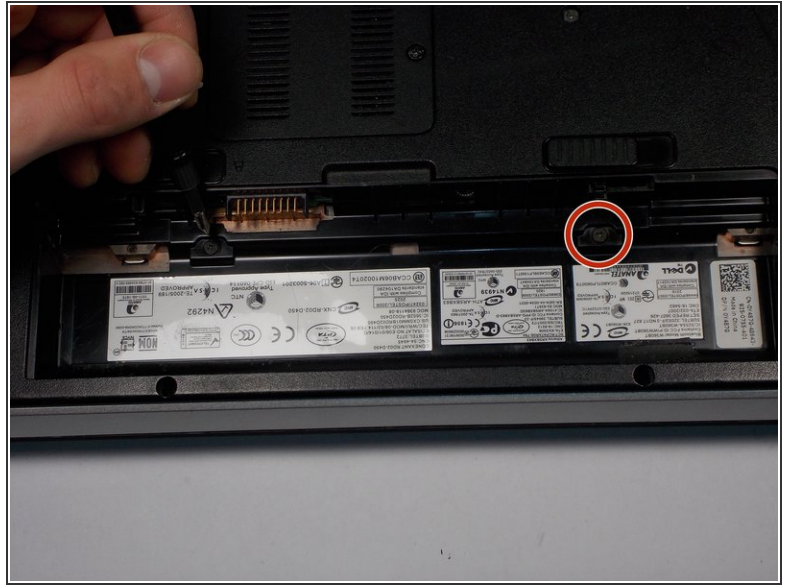
Replacing the power button is a simple task following this guide, be careful to not disturb any of the surrounding wires when removing the switch.

---

### TOOLS:

- [Phillips #000 Screwdriver](#) (1)
  - [iFixit Opening Tools](#) (1)
-

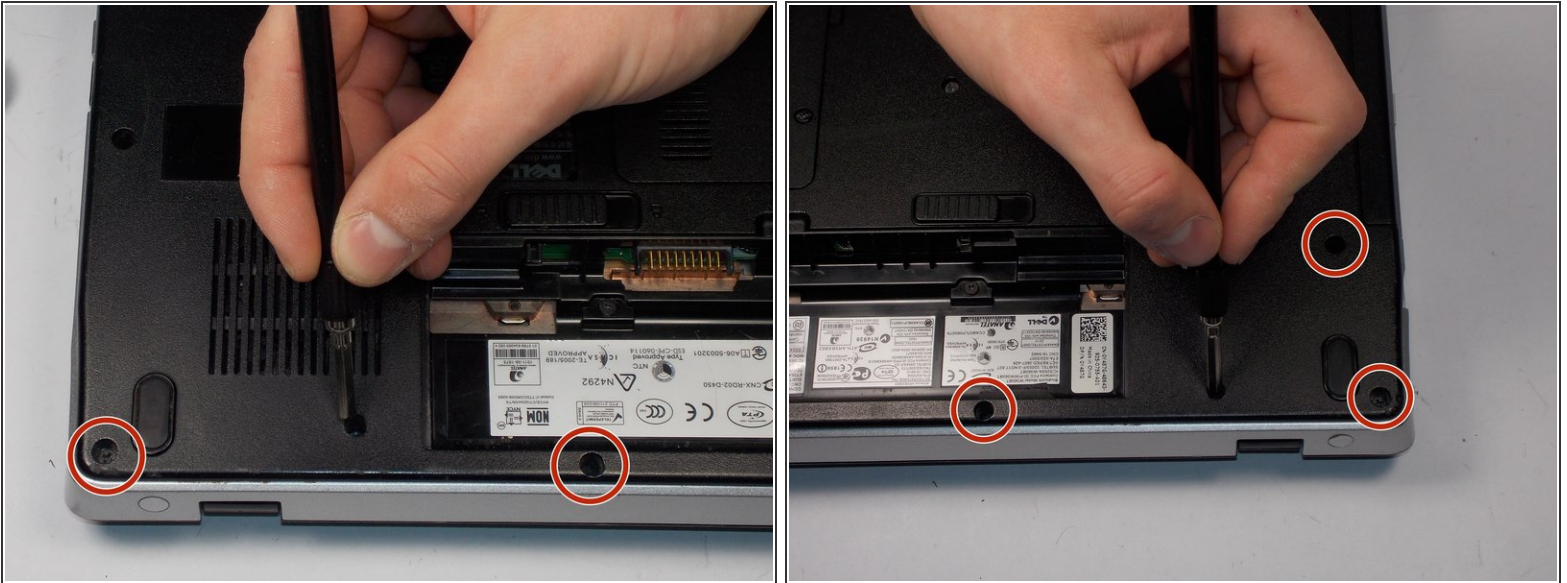
## Step 1 — Keyboard



- ① Make sure the computer is powered down before beginning your work
- Remove the battery and set it aside, there is a small clip that slides to free the battery.
- Unscrew the two 4.7mm screws below the battery.



## Step 2



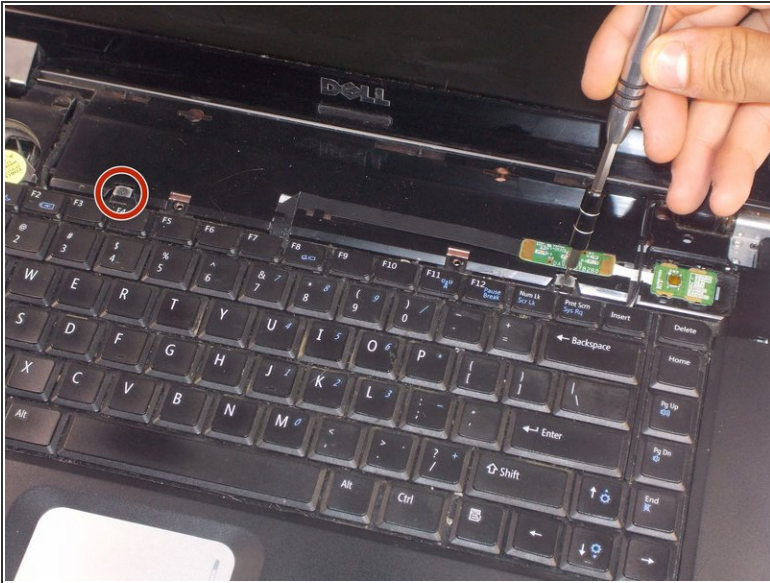
- Remove seven 8.6mm screws from the left and right side of the battery compartment
- ⓘ There are 2 screws to the left of the compartment, 3 to the right, and 2 along the bottom side.

## Step 3



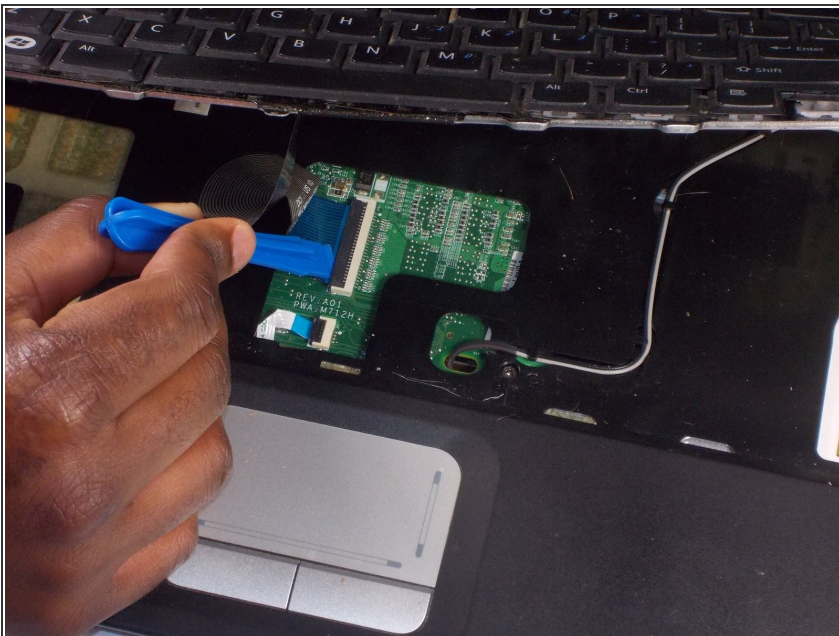
- Flip the laptop over and open it up.
- Using a plastic opening tool carefully pry up along the edge of the plastic bezel at the top of the keyboard.
- ⓘ Getting the lip of the plastic opening tool under the edge of the bezel and moving it along the right and left edges helps to make removal easier.

## Step 4



- Remove two 5.5mm screws from the top of the keyboard
- Using a plastic opening tool push inward along the edges of the keyboard to release the holding clips

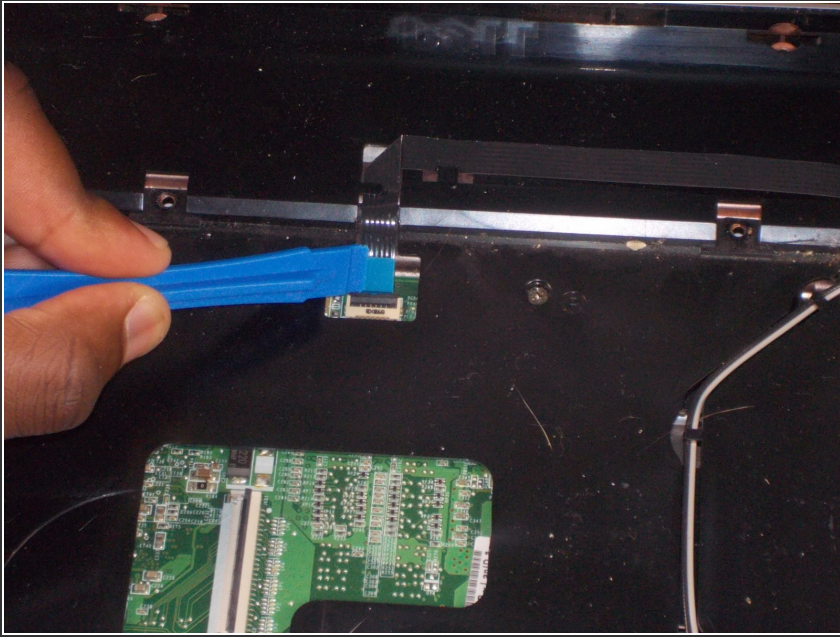
## Step 5



- Lift the keyboard upwards
- ⚠ Be careful not to pull too hard on the keyboard as it is still attached to the laptop by the ribbon connector.
- Using the plastic opening tool push up on the black clip holding the connector ribbon.
- Pull out the ribbon connector to remove the keyboard.

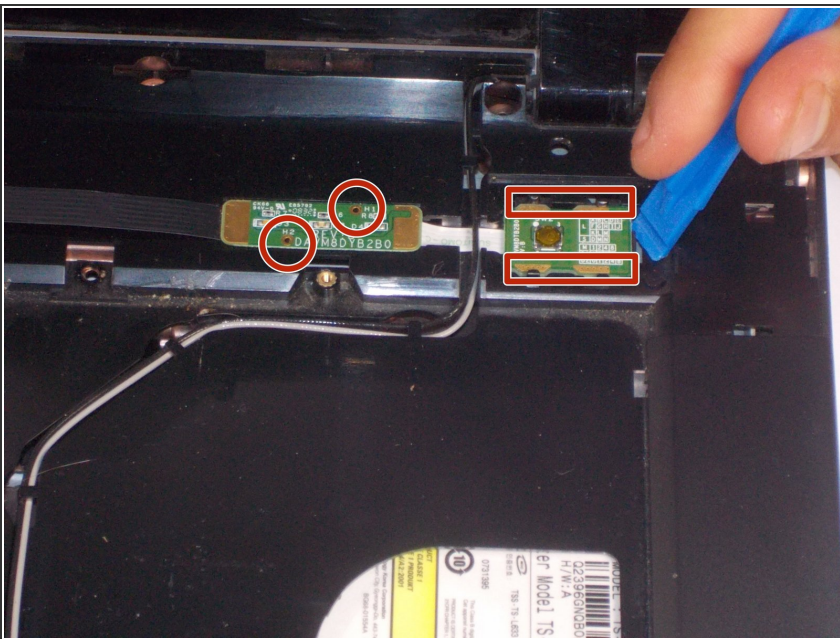


## Step 6 — Power Button



- With the keyboard removed use the plastic opening tool to lift the black clip holding the connector ribbon for the power switch.
- Gently pull out the connector ribbon from the inlet using the attached plastic pull

## Step 7



- Using a plastic opening tool carefully pull apart the clips holding in the power button and control unit.
- ⓘ There are four clips holding the button unit facing inward. Two push down clips hold the control unit.
- Slide the power under the screen cables to remove.

To reassemble your device, follow these instructions in reverse order.