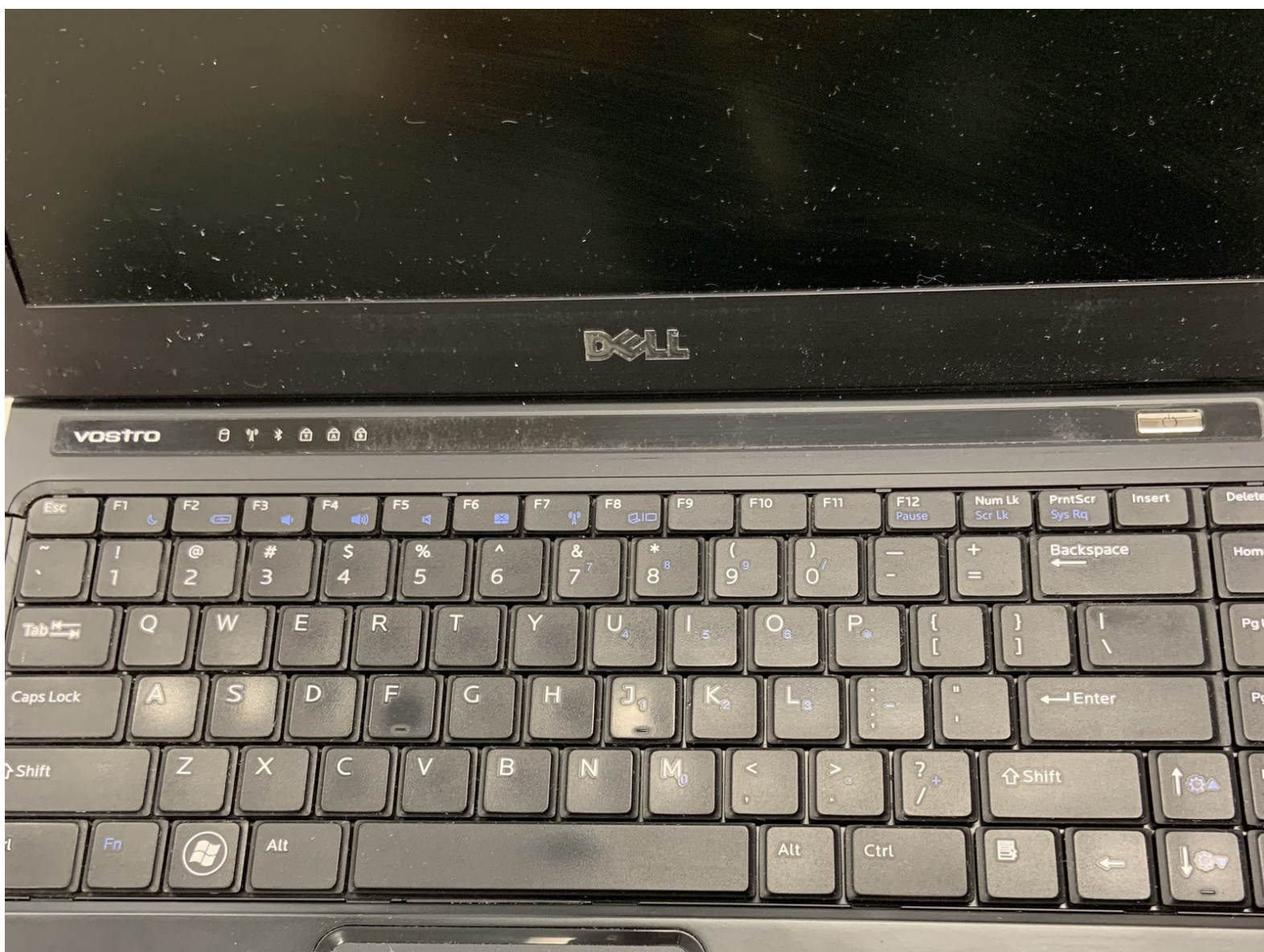




Dell Vostro V13 Keyboard Replacement

This is a guide showing you how to replace the keyboard of your Dell Vostro V13 laptop.

Written By: Amy Ledermann



INTRODUCTION

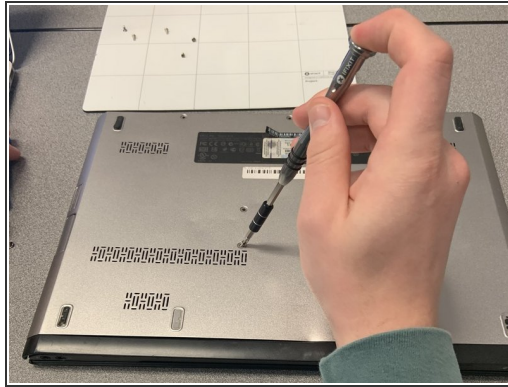
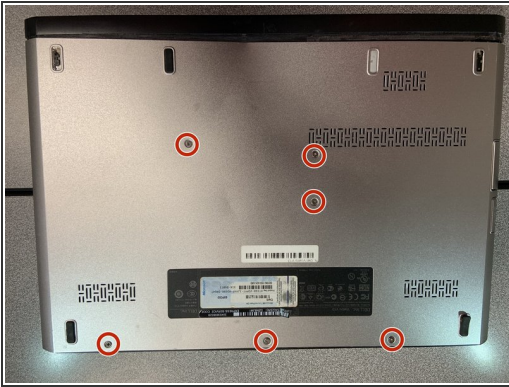
If your keyboard is unresponsive, you may need to replace it. You can follow these steps to replace it properly.



TOOLS:

- [iFixit Opening Tools](#) (1)
 - [Phillips #1 Screwdriver](#) (1)
-

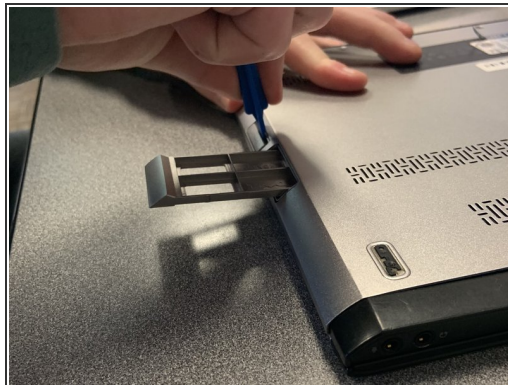
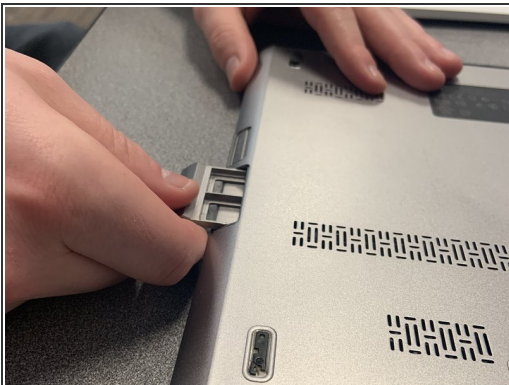
Step 1 — Back Cover




 Back up the memory to an external drive and power off the laptop before starting.

- Flip the laptop over so the vents are facing you.
- Remove the six 5.0 mm Phillips #1 screws using the magnetic driver.
- Remove the two 5.0 mm Phillips #1 screws on the back side of the laptop.

Step 2



- Slide out the SD and MicroSD holders.

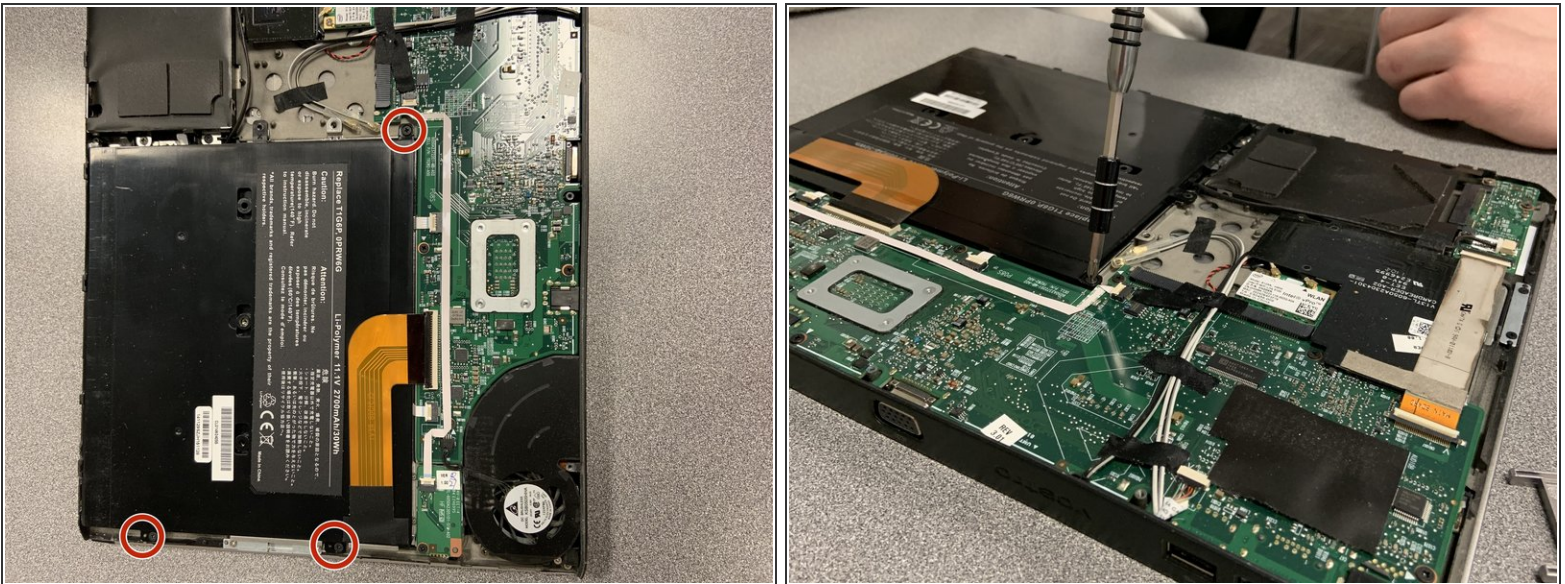
 If you are having trouble sliding them out, use the plastic opening tool.

Step 3



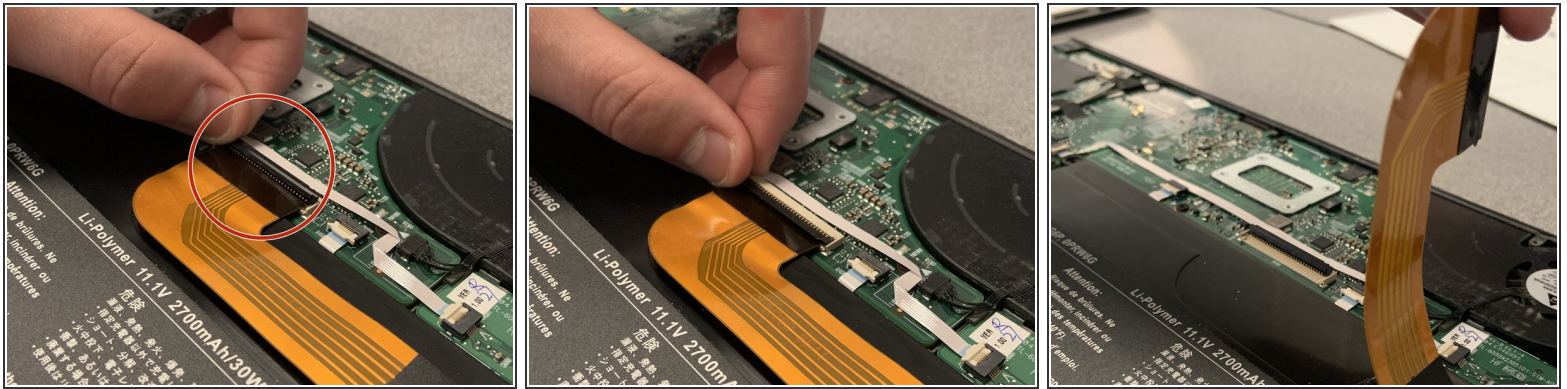
- Slide the plastic opening tool around the perimeter of the laptop until the cover pops off.
- Pull the back cover off.

Step 4



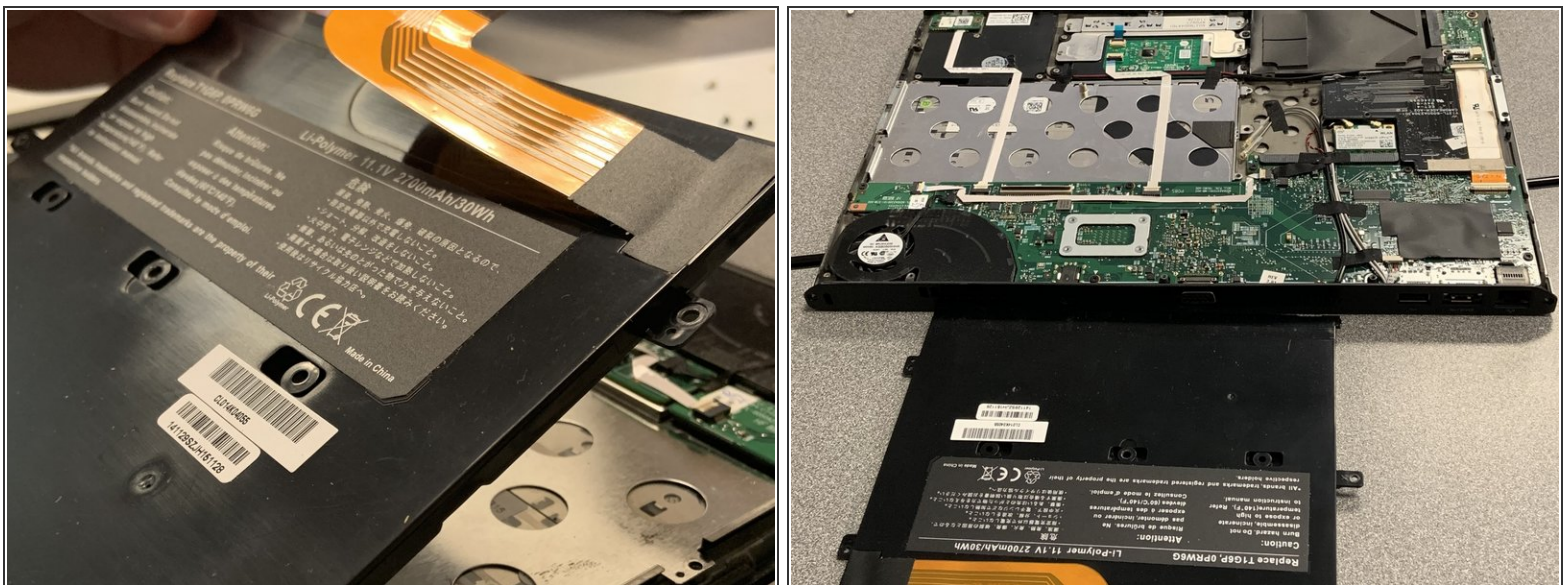
- Remove the three black 3.9 mm Phillips #1 screws holding the battery in place.

Step 5



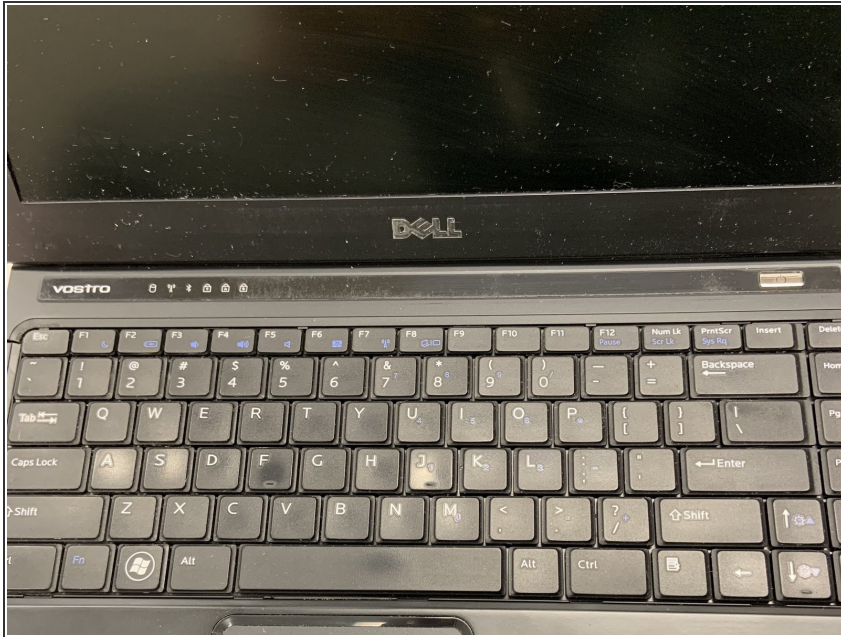
- Flip up the clip of the ribbon connector.
- Pull the strip out to disconnect the battery.

Step 6



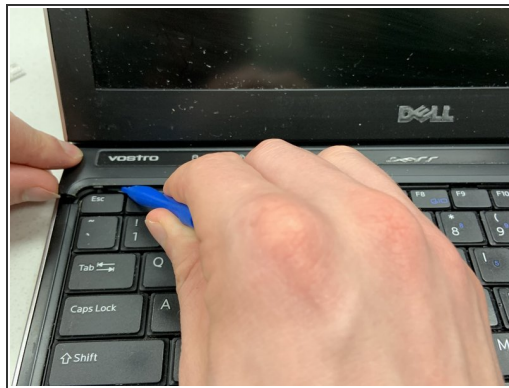
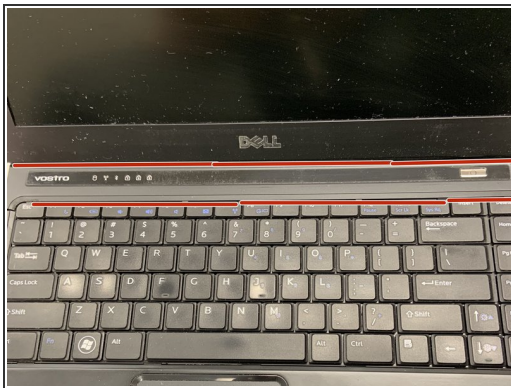
- Remove the battery.
- ❗ Removing the battery allows you to work safely.

Step 7 — Keyboard



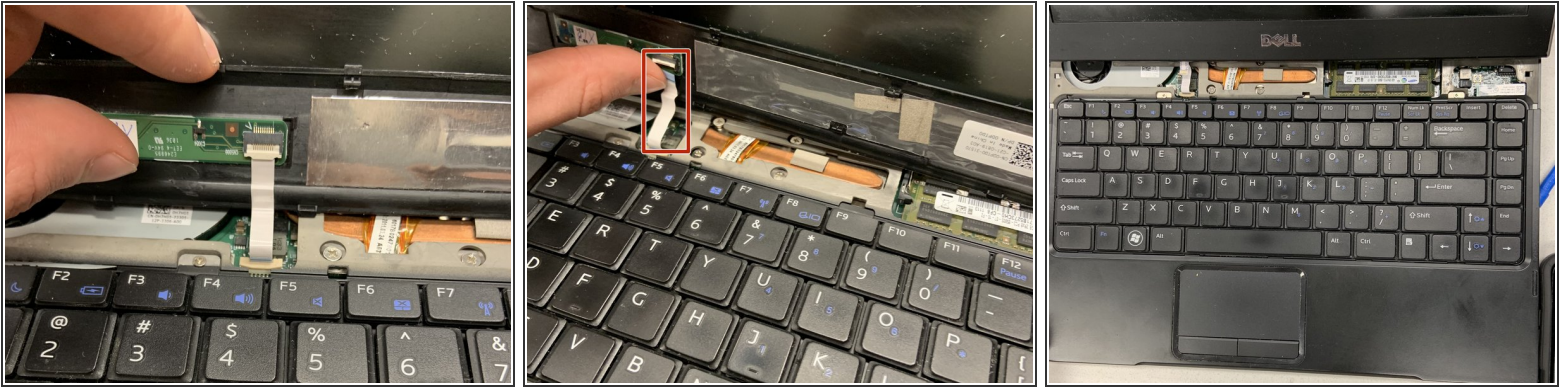
- Open the laptop so the keyboard is visible.

Step 8



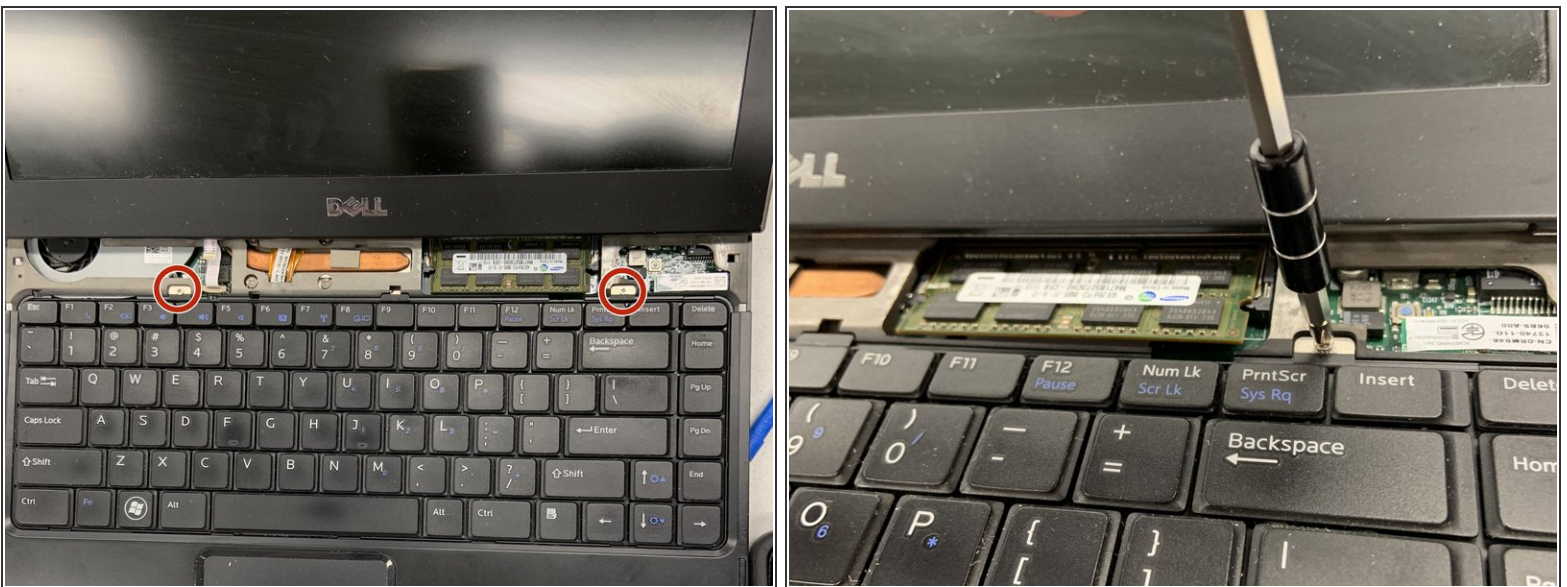
- Wedge the plastic opening tool around the seam of the notification panel to pop it off.

Step 9



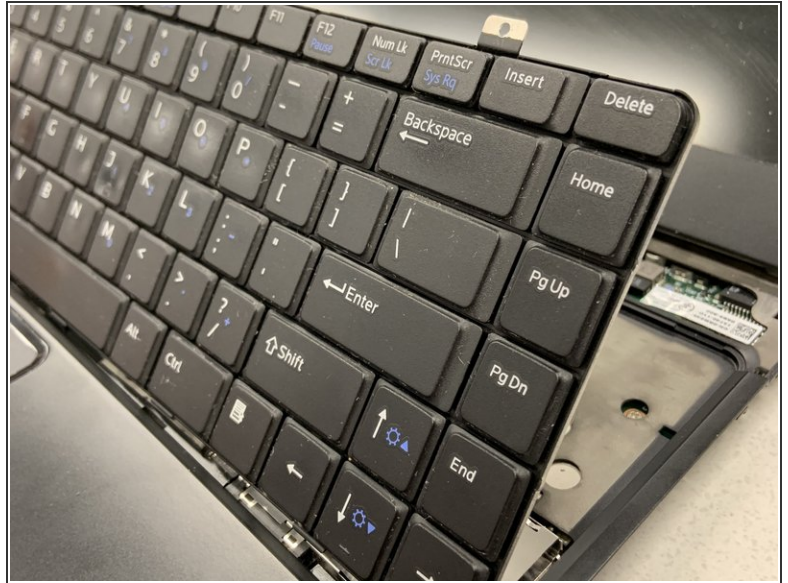
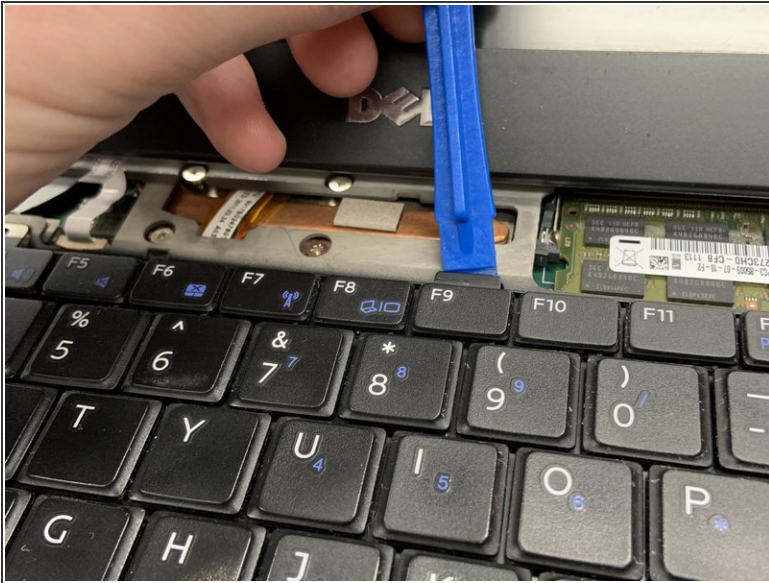
- Disconnect the ribbon connector on the panel.
- Remove the panel.

Step 10



- Remove the two silver 3.1 mm Phillips #1 screws.

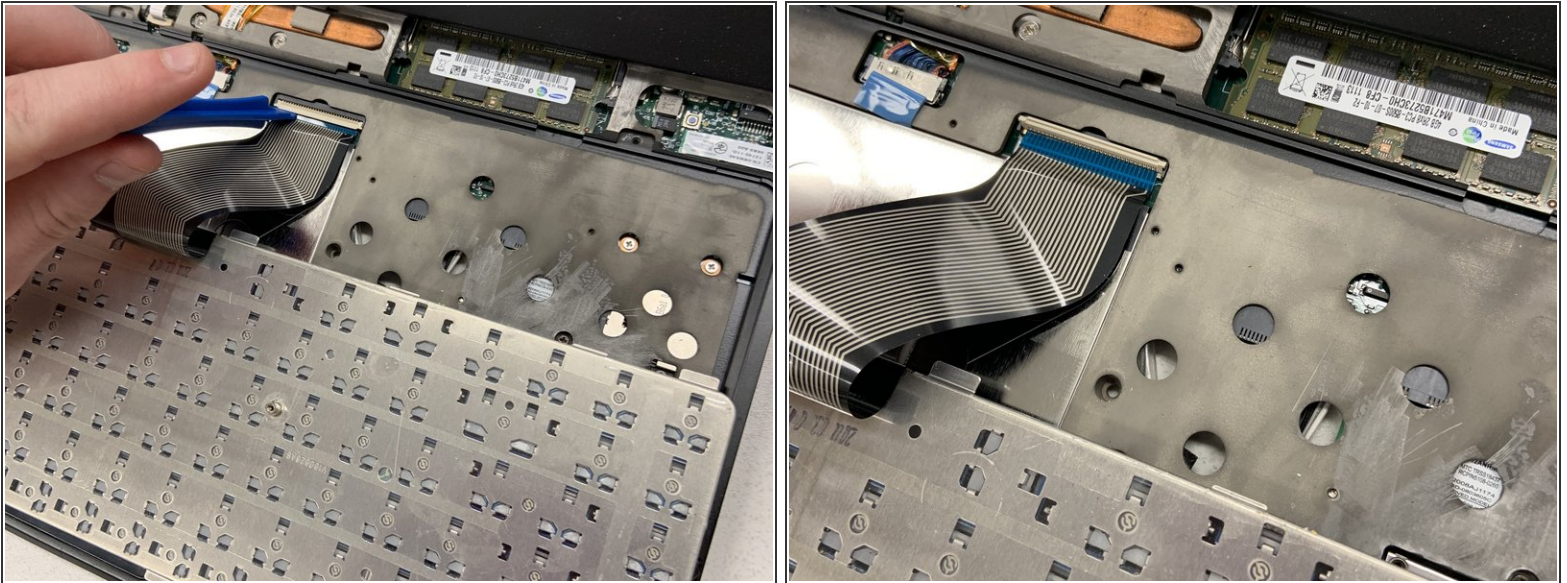
Step 11



- Use the plastic opening tool to pry the keyboard out of the laptop.

⚠ Do not pull the keyboard all the way out yet.

Step 12



- Disconnect the ribbon cable that connects the keyboard to the laptop by flipping up the white locking tab on the ZIF connector.

i If you're having trouble, use the plastic opening tool to help.

Step 13



- Remove the keyboard.

To reassemble your device, follow these instructions in reverse order.