



Dell Wyse Xn0m Mouse Sensor Board Replacement

Learn how to replace the board that controls the left- and right-click buttons and the trackpad.

Written By: Jake Milligan



INTRODUCTION

As one of the key features of a laptop, the mouse pad is one of the elements of the device that is most likely to suffer wear over time. The right/left click buttons are especially susceptible to wear and tear, as these are mechanical systems connected to electrical boards.

If your left-click or right-click buttons aren't working, you may need to replace the board that controls those functions. Use this guide to learn how!



TOOLS:

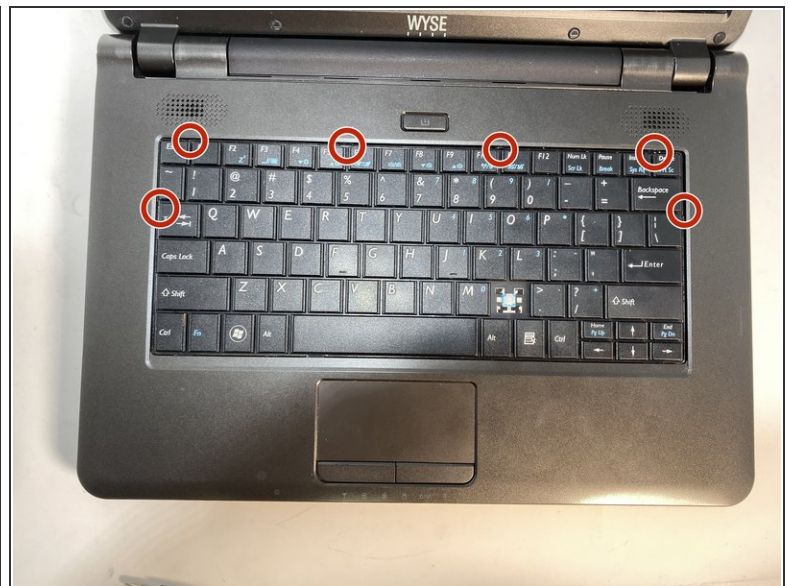
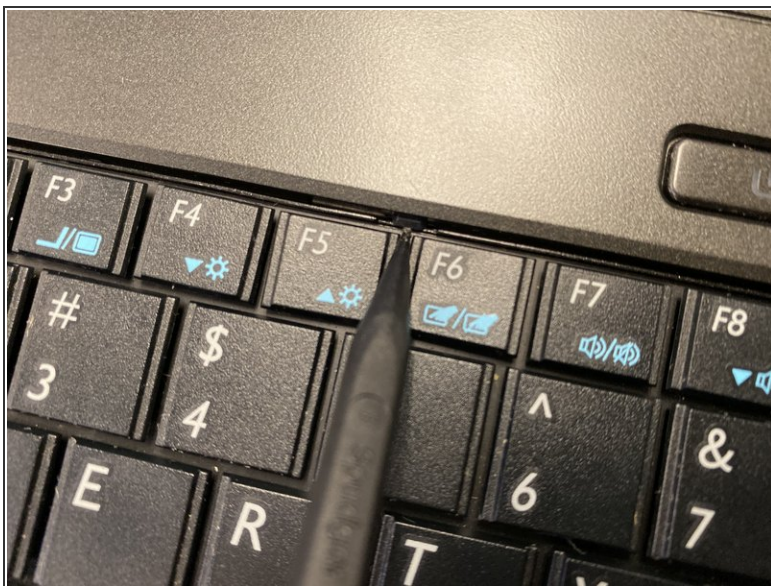
- [Phillips #1 Screwdriver](#) (1)
 - [Spudger](#) (1)
 - [iFixit Opening Tools](#) (1)
-

Step 1 — Mouse Sensor Board



- Flip the device over. Unscrew nine marked 7mm Phillips #1 screws.

Step 2



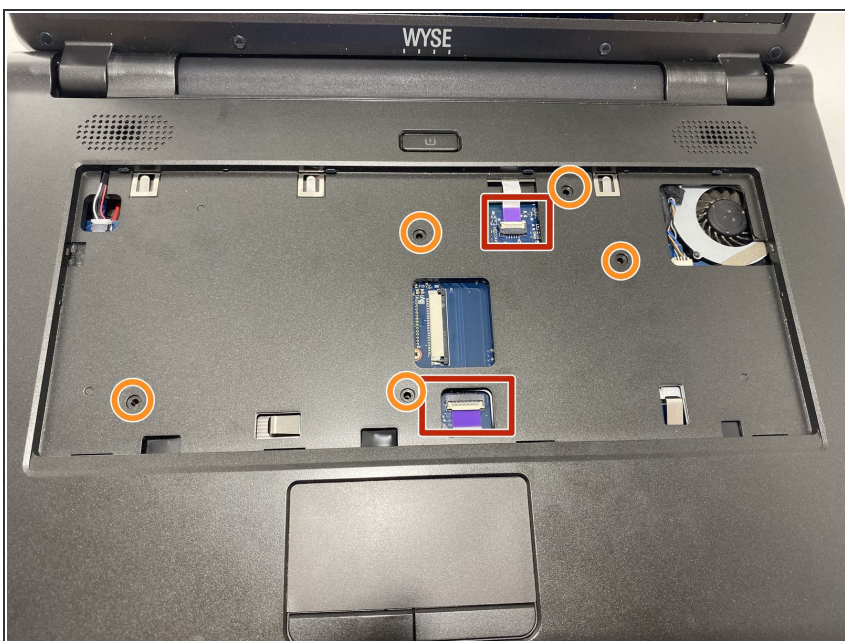
- Remove the keyboard by pushing back the tabs at the marked locations with a spudger or plastic opening tool.

Step 3



- Turn the device around so the screen is closest to you. Lift the keyboard and detach the ribbon cable with the spudger.
- ❗ To disconnect the cable, disengage the locking tab of the ZIF connector with the spudger and pull the cable out gently.

Step 4



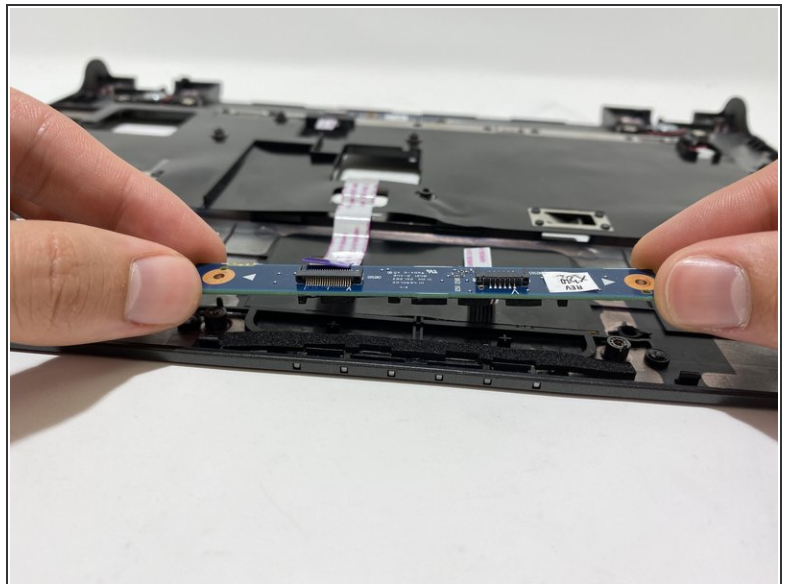
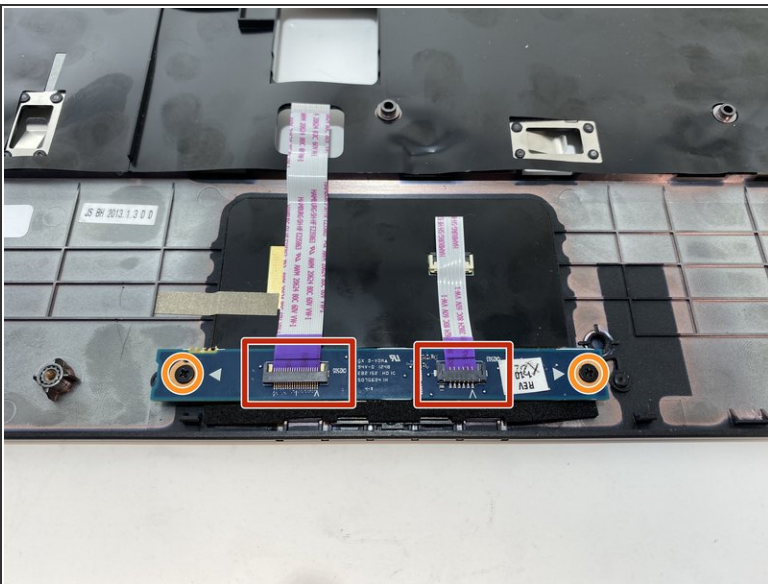
- Remove the keyboard and set it aside. Detach the other ribbon cables with the spudger.
- Remove five 8mm Phillips #1 screws.

Step 5



- Pry open the laptop with the plastic opening tool.

Step 6



- Under the trackpad, detach the ribbon cables with the spudger.
- Unscrew two 3mm Phillips #1 screws and lift the board from the pegs.
- Remove the board from the laptop.

To reassemble your device, follow these instructions in reverse order.