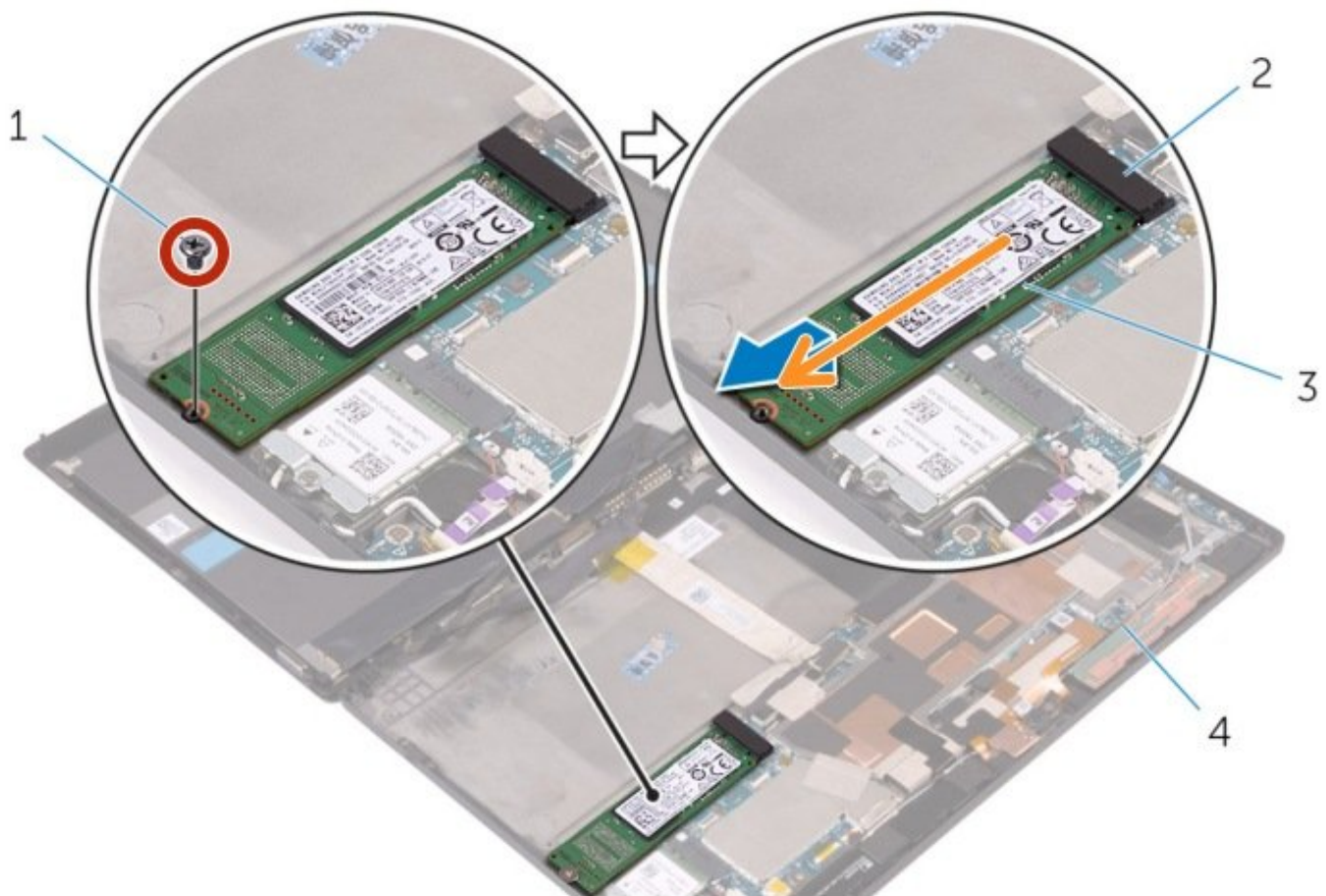




Dell XPS 12 9250 Solid-State Drive Replacement

Written By: Johnathan Hammond

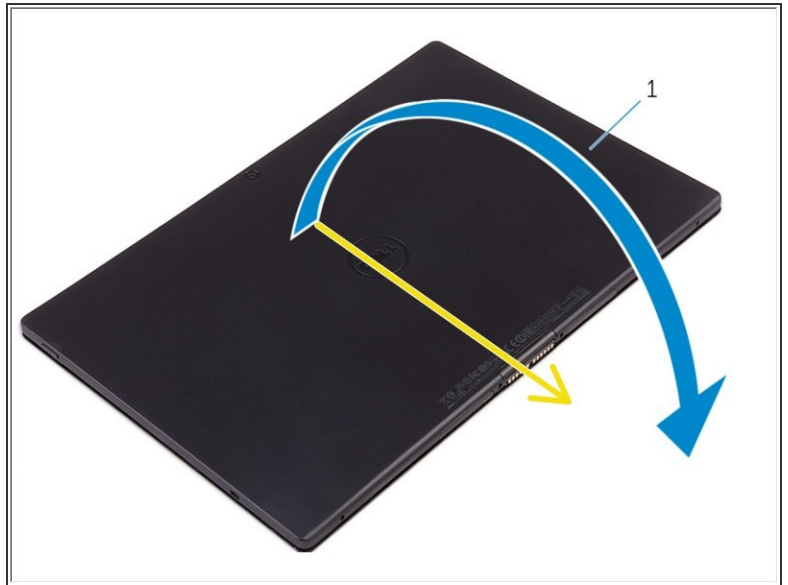
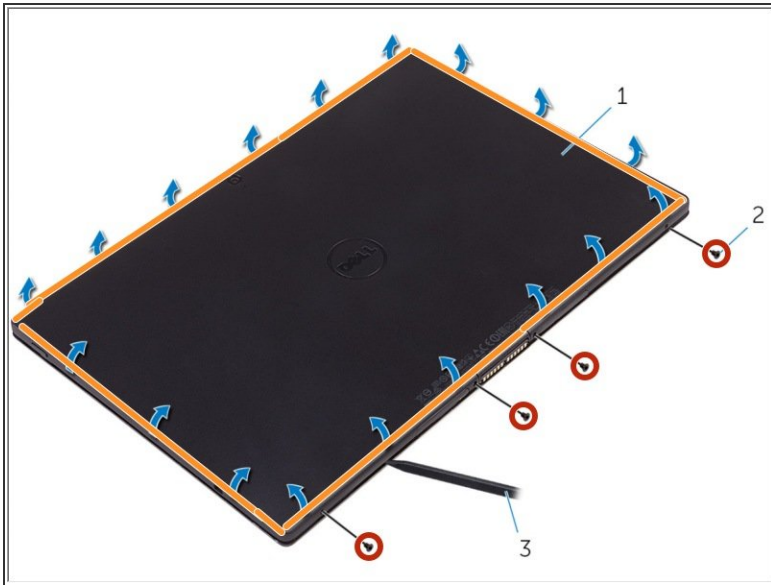




TOOLS:

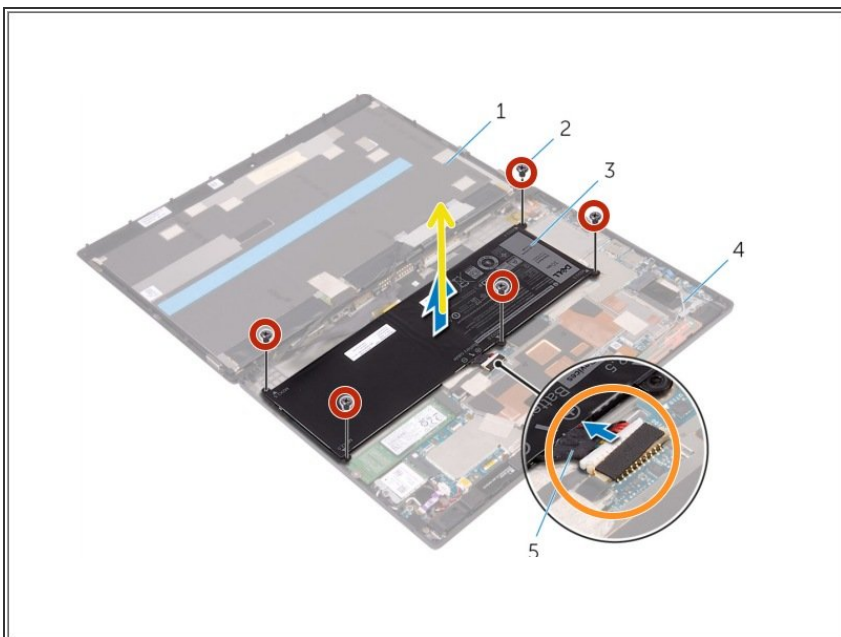
- [Phillips #0 Screwdriver](#) (1)
 - [Spudger](#) (1)
-

Step 1 — Removing the Back Cover



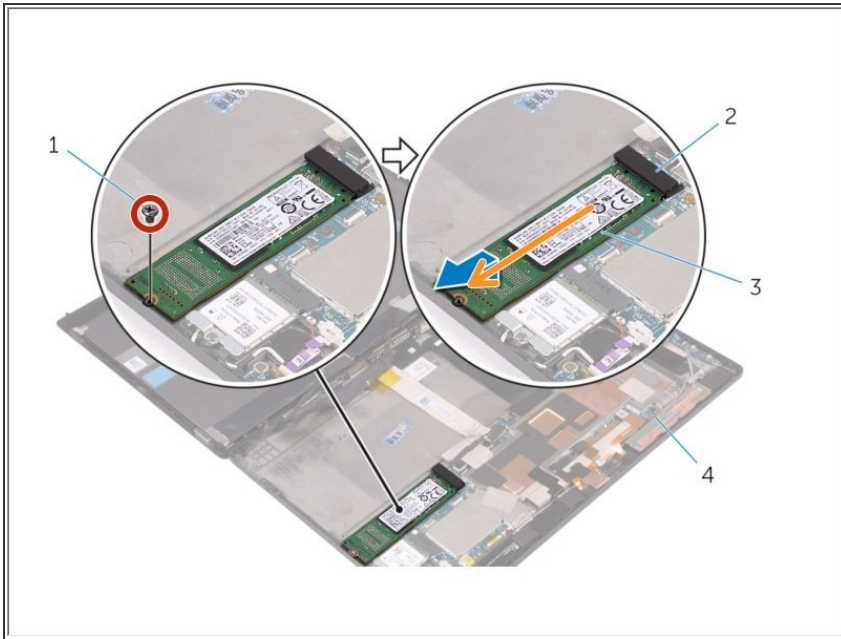
- Turn the tablet over.
 - Remove the screws that secure the back-cover assembly to the display assembly.
 - Using a plastic scribe, pry up along the edges of the back-cover assembly.
 - Carefully, lift the back-cover assembly and turn it over.

Step 2 — Removing the Battery



- Remove the screws that secure the battery to the back-cover assembly.
 - Disconnect the battery cable from the system board.
 - Lift the battery, along with its cable, off the back-cover assembly.
- ☑ If this is all you are doing Follow Step In Reverse if not Go to Next Step.

Step 3 — Removing M.2 SSD



- Remove the screw that secures the solid-state drive to the back-cover assembly.
 - Lift and slide the solid-state drive off the back-cover assembly.
- ☑ If this is all you are doing Follow Step In Reverse if not Go to Next Step.