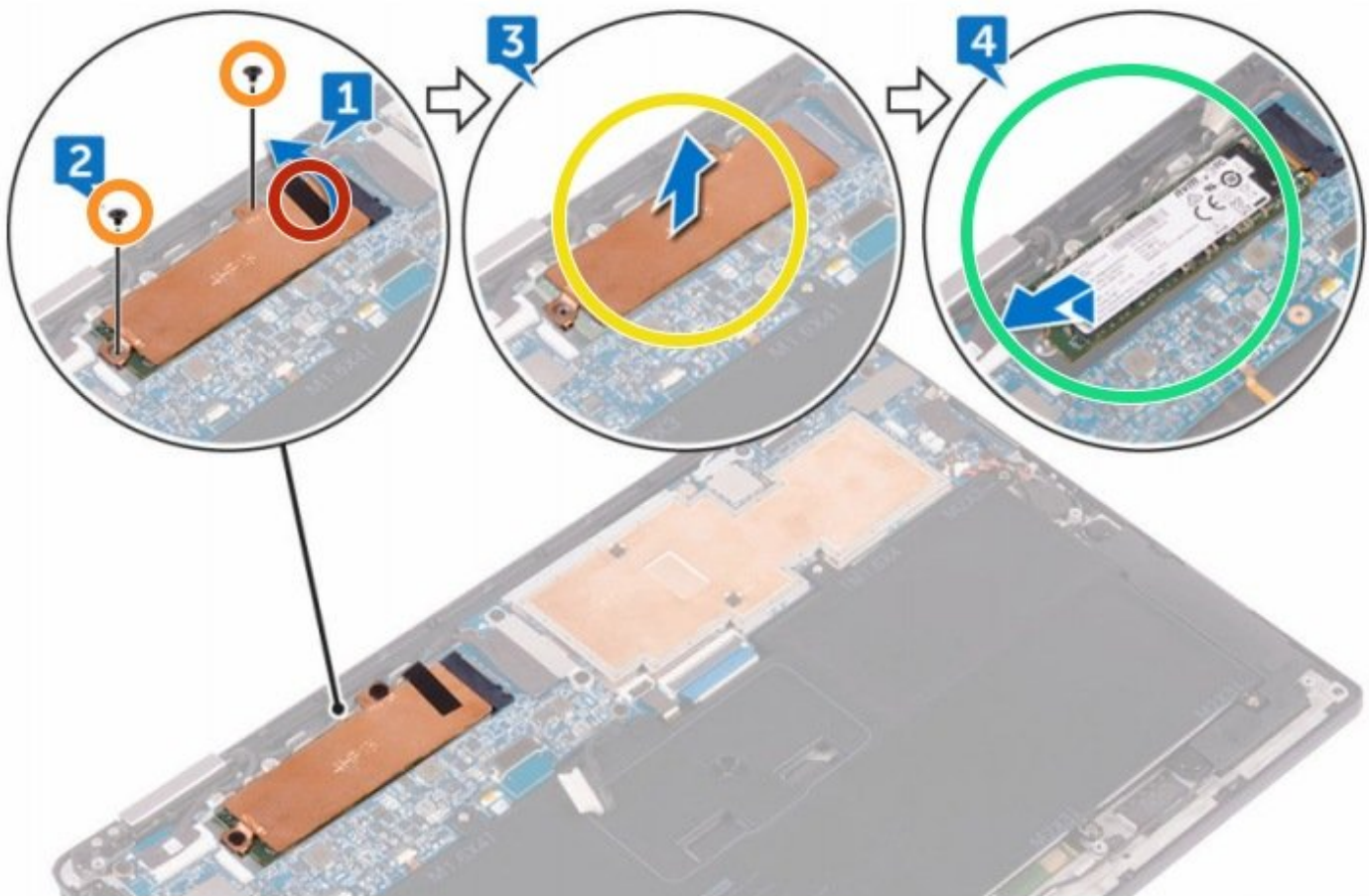




# Dell XPS 13 9365 2-in-1 solid-state drive Replacement

Written By: Johnathan Hammond



---

# INTRODUCTION

solid-state drive Replacement

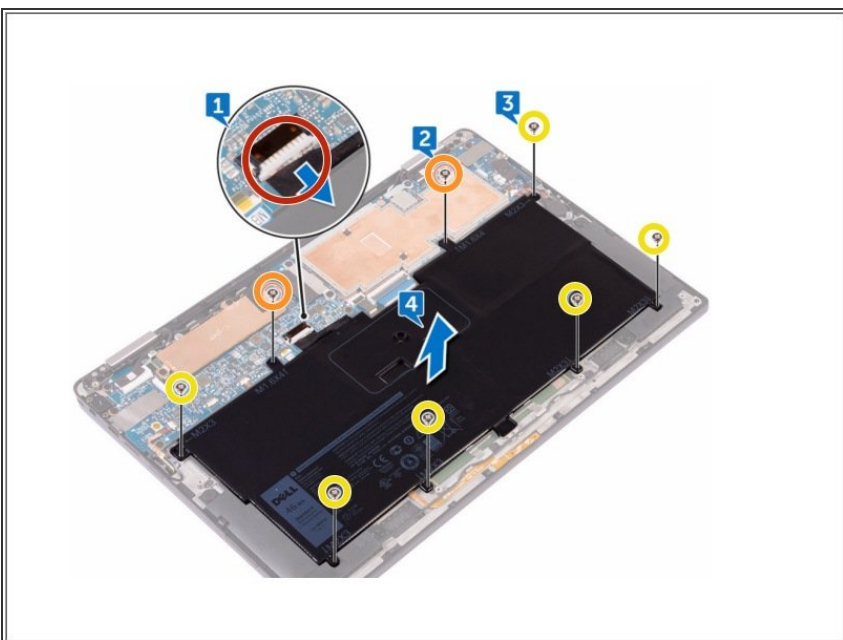
---



## TOOLS:

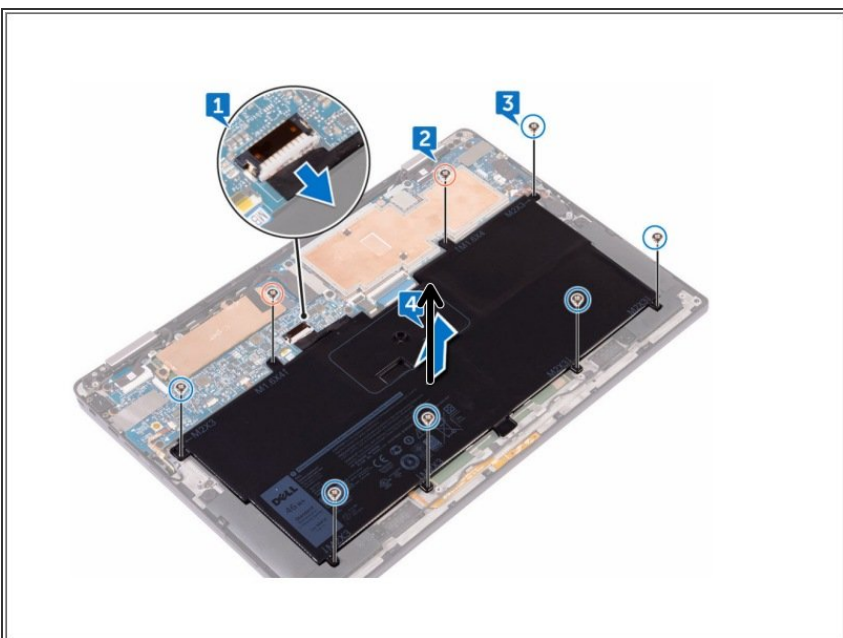
- [Phillips #0 Screwdriver](#) (1)
-

## Step 1 — Remove Old Battery



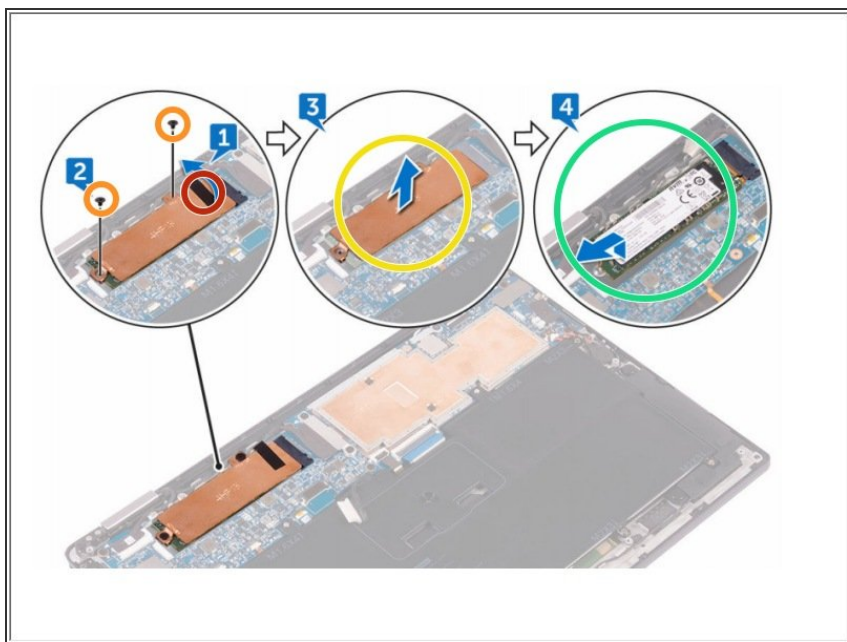
- Disconnect the battery cable from the system board.
- Remove the two screws (M1.6x4) that secure the battery to the palm-rest assembly.
- Remove the six screws (M2x3) that secure the battery to the palm-rest assembly.

## Step 2 — Lift Battery Out



- Lift the battery off the palm-rest assembly.
- ☑ If this is all you are doing Follow Step In Reverse if not Go to Next Step.

## Step 3 — Removing the Solid-State Drive



- Peel off the display cable tape from the hard-drive plate.
- Remove the two screws (M1.6x2.5) that secure the hard-drive plate to the system board.
- Remove the hard-drive plate.
- Slide and remove the solid-state drive from the solid-state drive slot.

**⚠ CAUTION:** Solid-state drives are fragile. Exercise care when handling the solid-state drive.

**★** If this is all you are doing Follow Step In Reverse if not Go to Next Step.