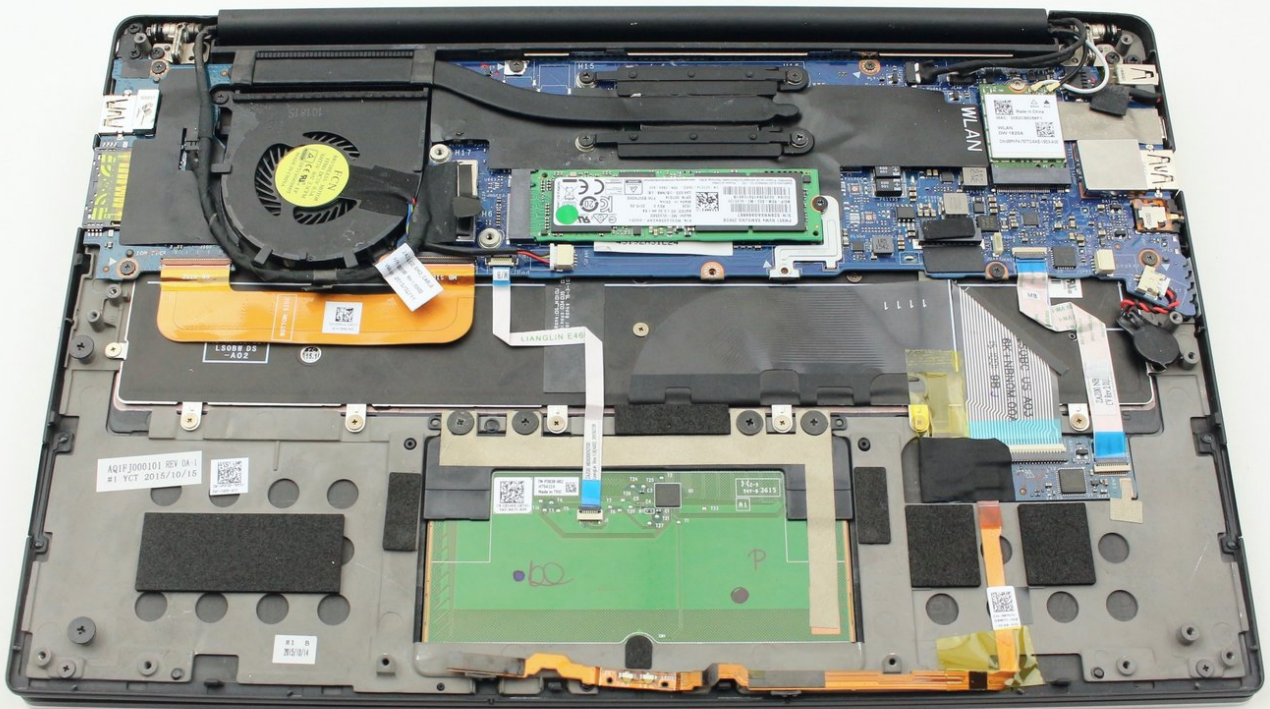




# Dell XPS 13 Display Assembly Replacement

This guide will show you how to replace a cracked or malfunctioning display in the Dell XPS 13.

Written By: Austin Blakely



## INTRODUCTION

This guide show the procedure for replacing the display of the Dell XPS 13. It requires opening the back case and removing the battery and speakers. The display is hooked up to the motherboard by six separate connectors, and cannot be removed unless the laptop is open. Use this guide if have a cracked or malfunctioning Dell XPS 13 display.



### TOOLS:

- [iFixit Opening Picks set of 6](#) (1)
- [T5 Torx Screwdriver](#) (1)
- [Tweezers](#) (1)
- [iFixit Opening Tools](#) (1)
- [Phillips #0 Screwdriver](#) (1)
- [Spudger](#) (1)

## Step 1 — Back Cover



- Remove the eight 4 mm T5 Torx screws from the bottom cover.

## Step 2



- Use a plastic opening tool to pry open the 'XPS' flap in the middle.

## Step 3



- Remove the single Phillips screw hidden beneath the flap.

## Step 4



- Use opening picks or a plastic pry tool to pry open the case clips, beginning from the back edge.

## Step 5



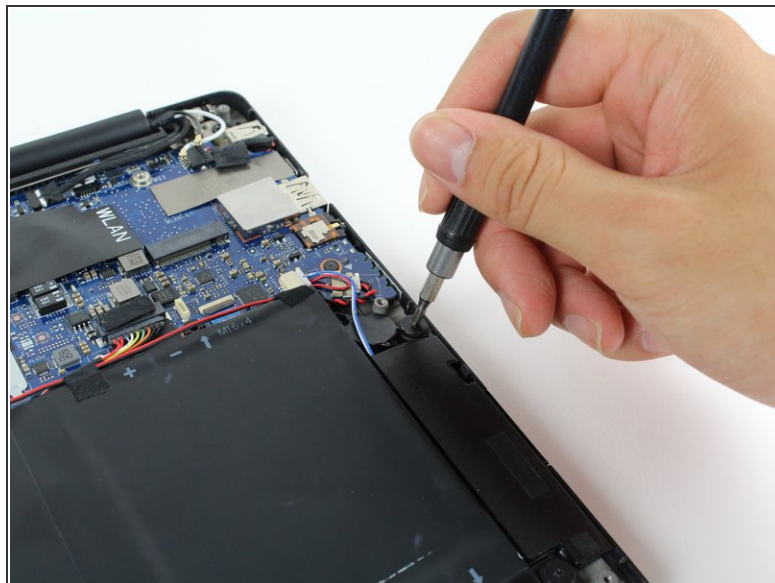
- Remove the bottom cover.

## Step 6 — Battery Disconnection



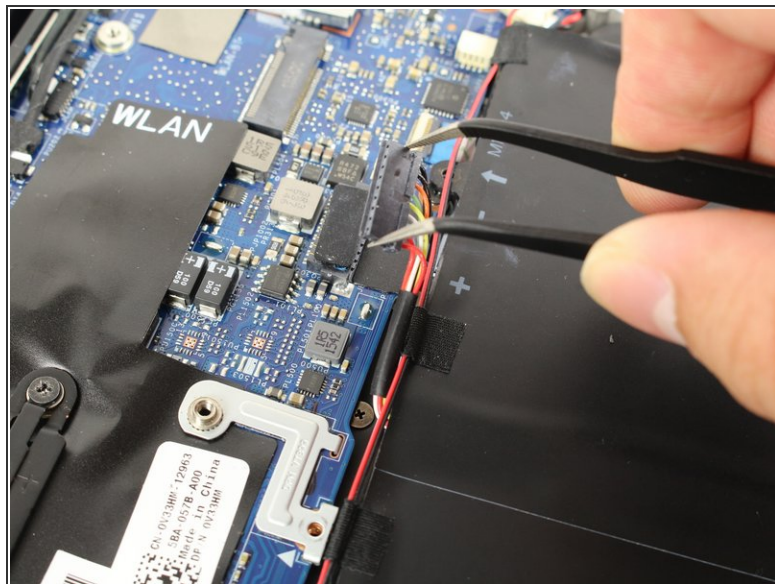
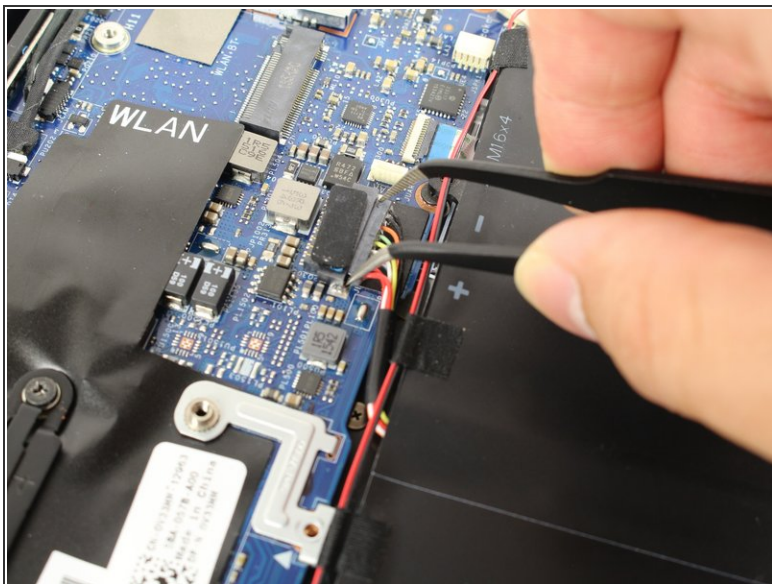
- Pull the battery cable connector towards the battery to disconnect it from its socket.
- If the connector is stubborn, push a little at one side, then the other, to "walk" it out of its socket.
- ⚠ Do not pull up.
- Open the display and press the power button for five seconds to drain any remaining charge from the system.

## Step 7 — Battery



- Remove the four 3 mm Phillips #0 screws located on each corner of the battery.

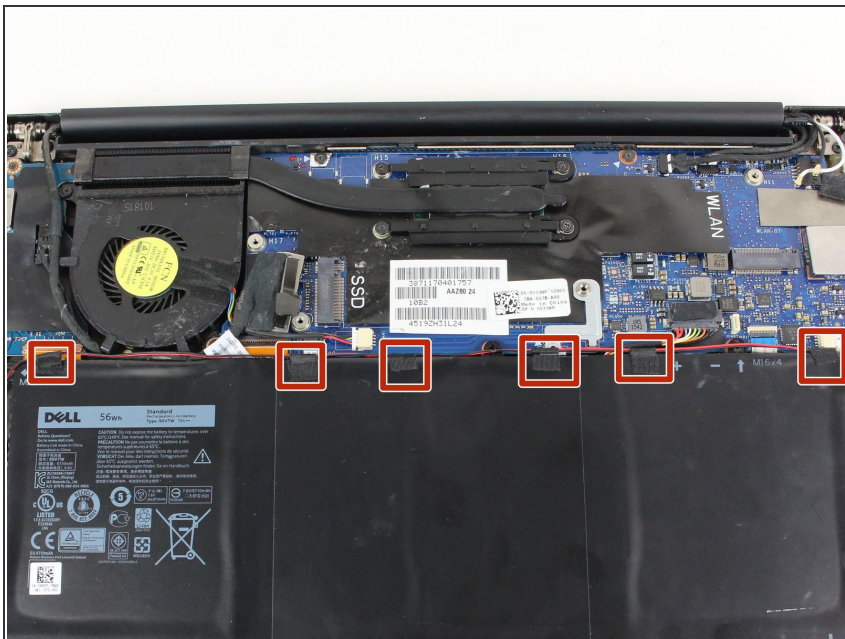
## Step 8



- Pull the battery cable connector towards the battery to disconnect it from its socket.

⚠ Do not pull up.

## Step 9



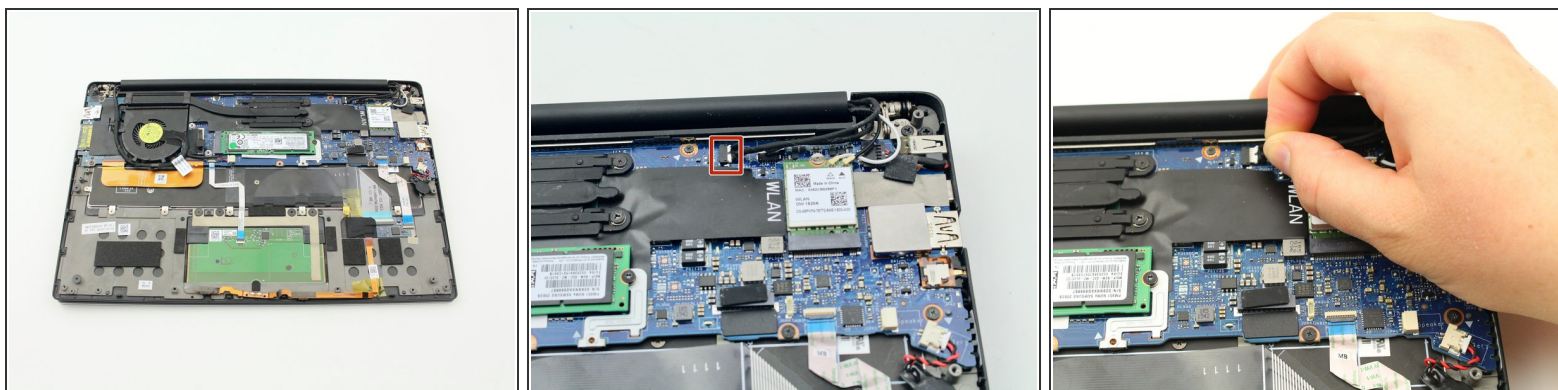
- Peel up any tape securing the speaker cables to the battery.
- ⓘ You do not need to remove the speakers, only the tape, allowing the battery to be removed out under the speaker cables.

## Step 10



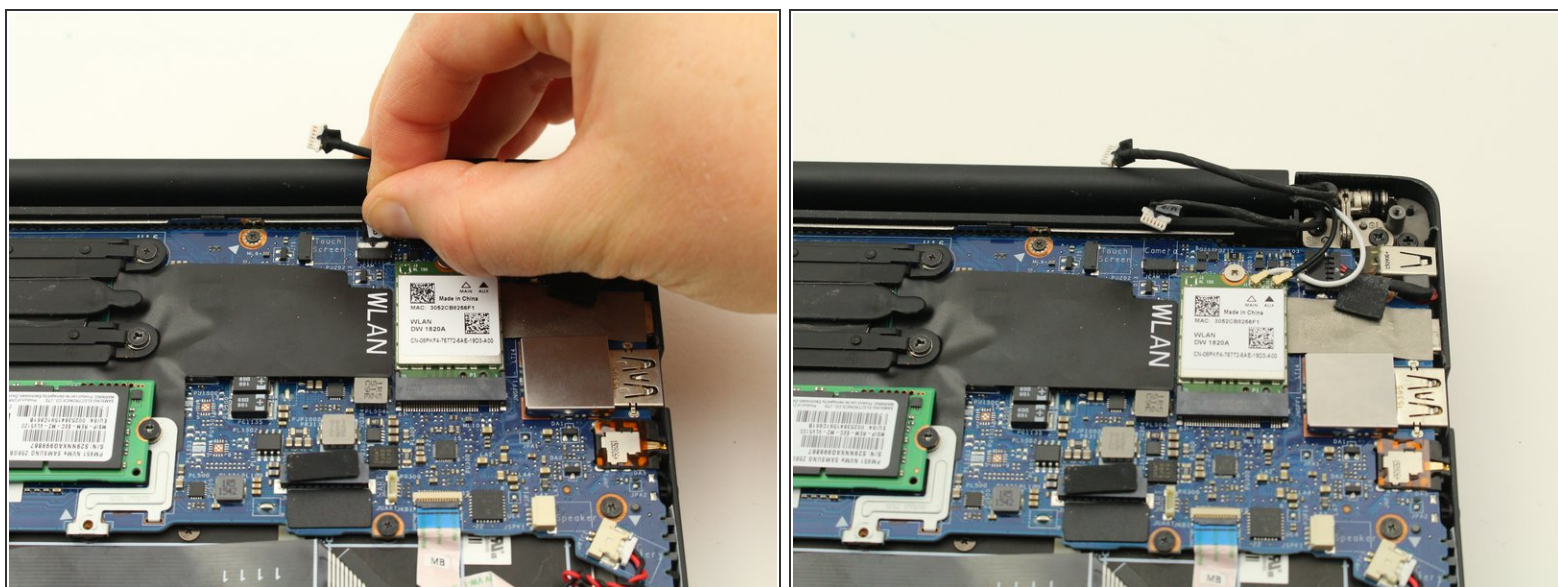
- Remove the battery.

## Step 11 — Display Assembly



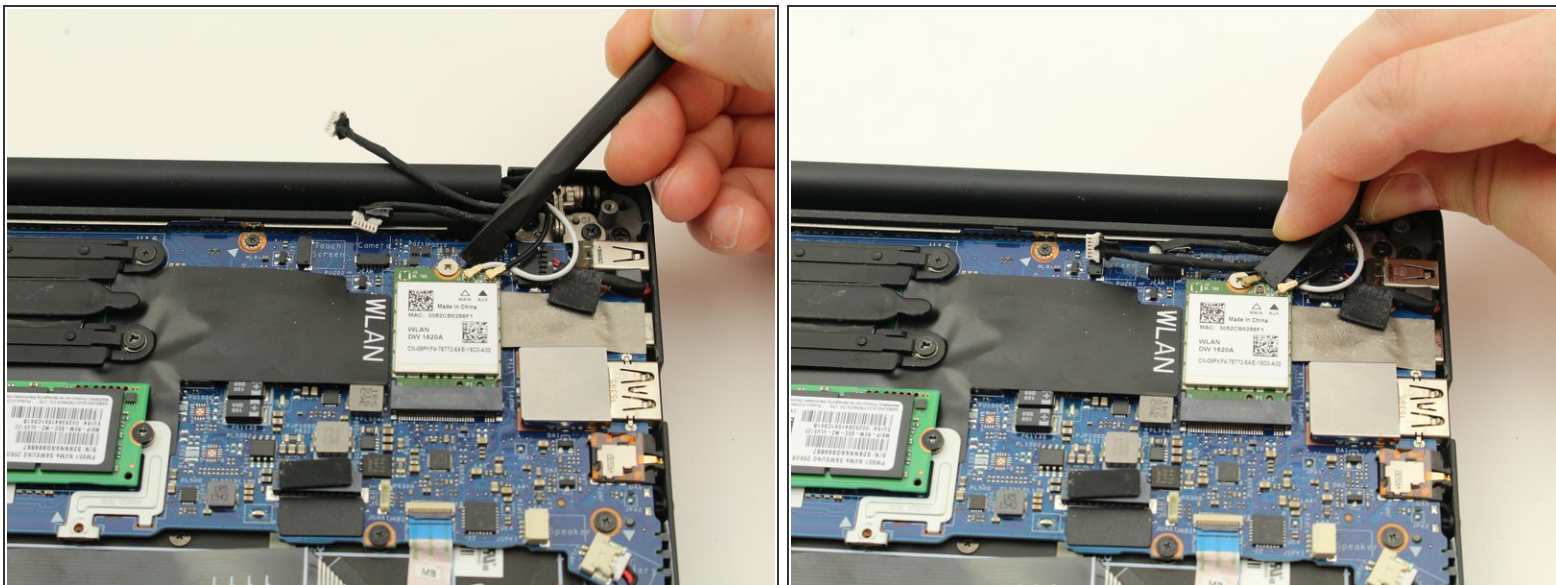
- Pull the sliding touchscreen connector gently to the right and out of the motherboard.

## Step 12



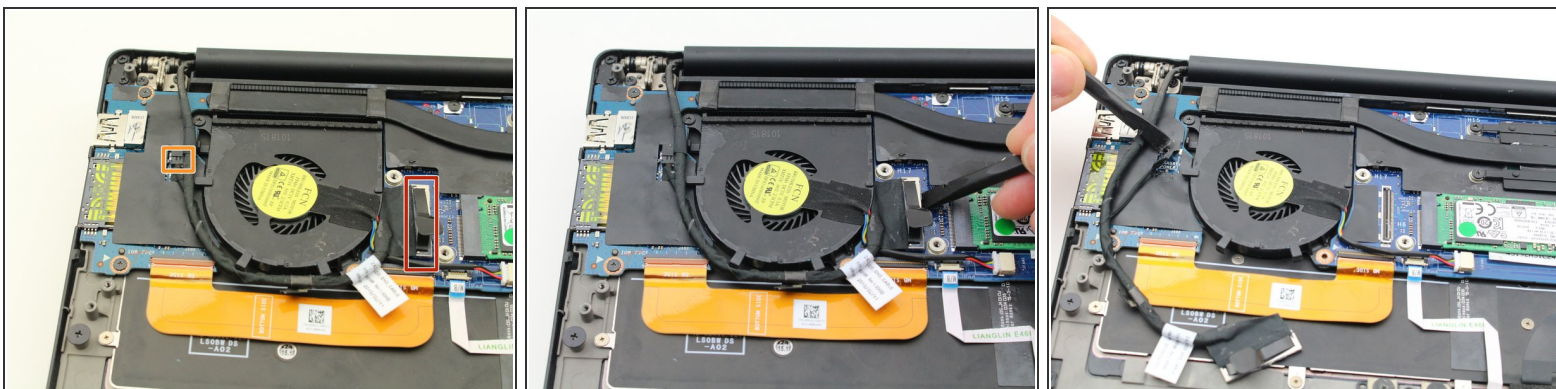
- Use your fingers to remove the sliding camera connector out from the motherboard.

## Step 13



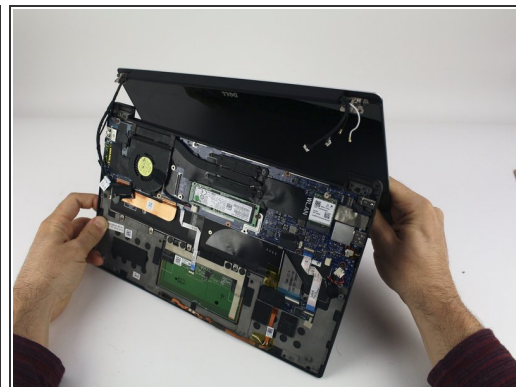
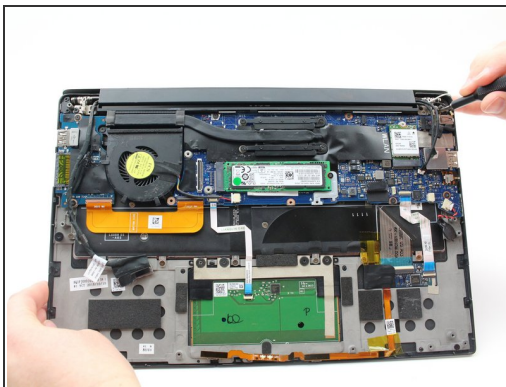
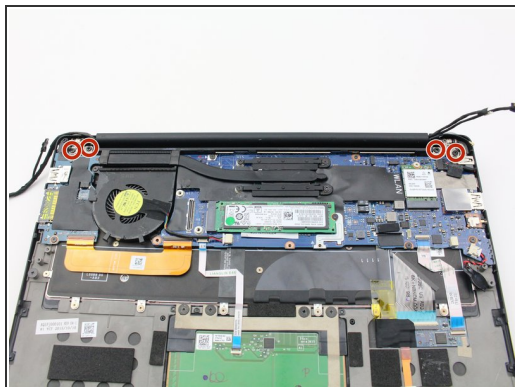
- Pop the coaxial antenna cables up from the wireless card with the flat end of the spudger.

## Step 14



- Using a spudger, pry up the press fit connector on the end of the left cable bundle.
- Gently remove the sliding cable connector from its port to the left of the fan.

## Step 15



- Remove the four, black 4.6 mm screws from the display mounts using a Phillips #0 screwdriver.
- ⓘ The laptop needs to be open for the display to clear the cutouts of the bottom case, so you may find it easier to remove the screws while already in an open configuration.
- Remove the display assembly.

To reassemble your device, follow these instructions in reverse order.