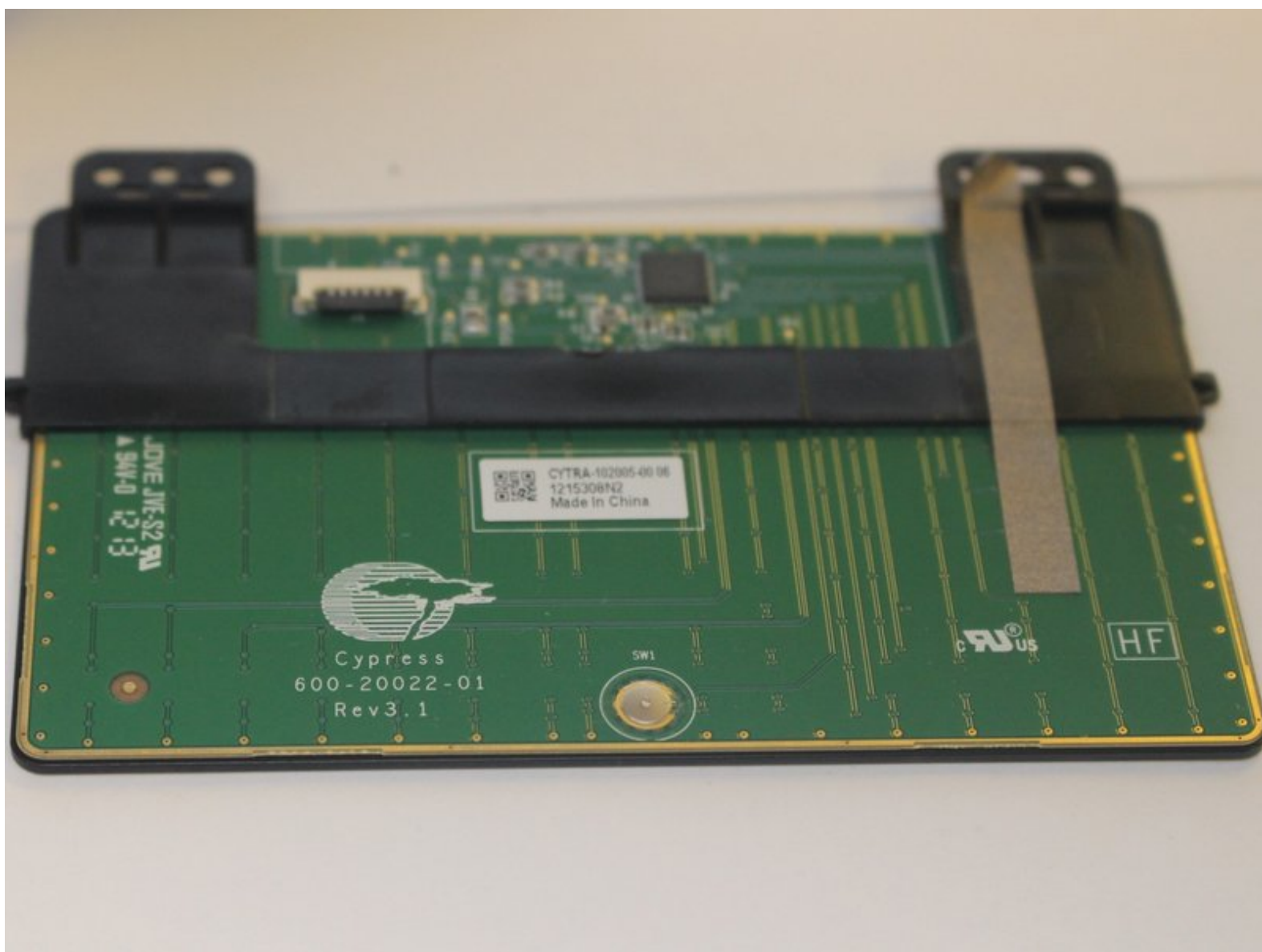




Dell XPS 13 L321X Mouse pad Replacement

How to replace the track pad. It is recommended to check the troubleshooting page before replacing.

Written By: Ahmad EL Herbawi



INTRODUCTION

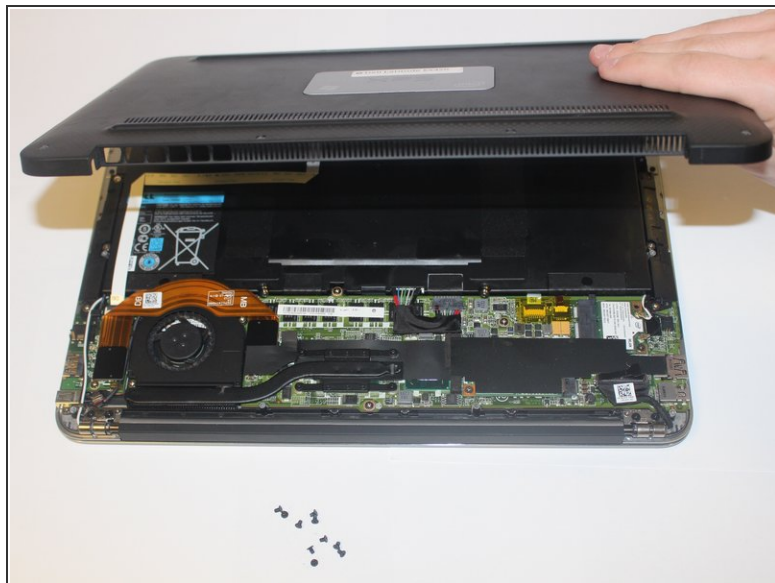
Trackpad not responsive or not working at all? Replace it (only screwdrivers required).



TOOLS:

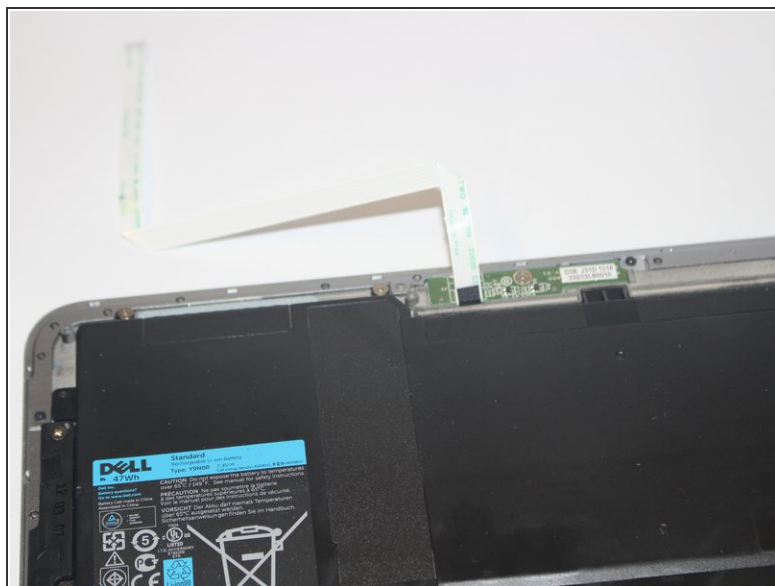
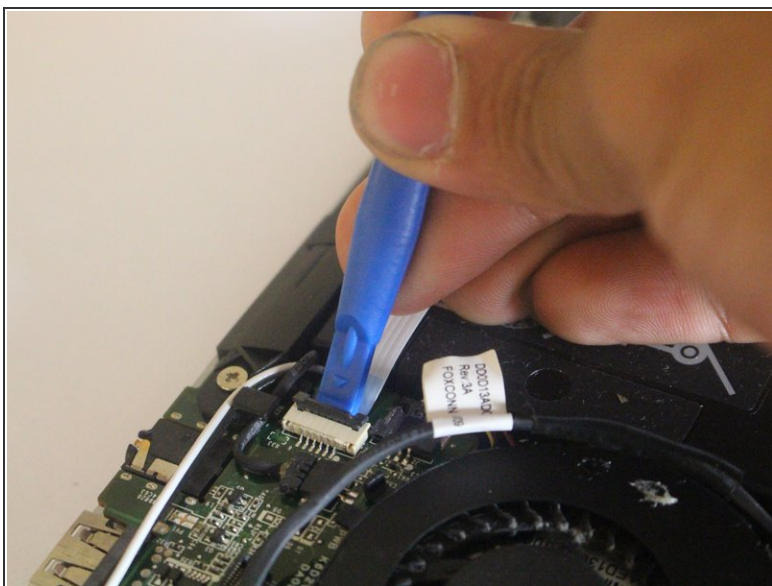
- [T4 Torx Screwdriver](#) (1)
 - [Phillips #00 Screwdriver](#) (1)
 - [iFixit Opening Tools](#) (1)
-

Step 1 — Track Pad



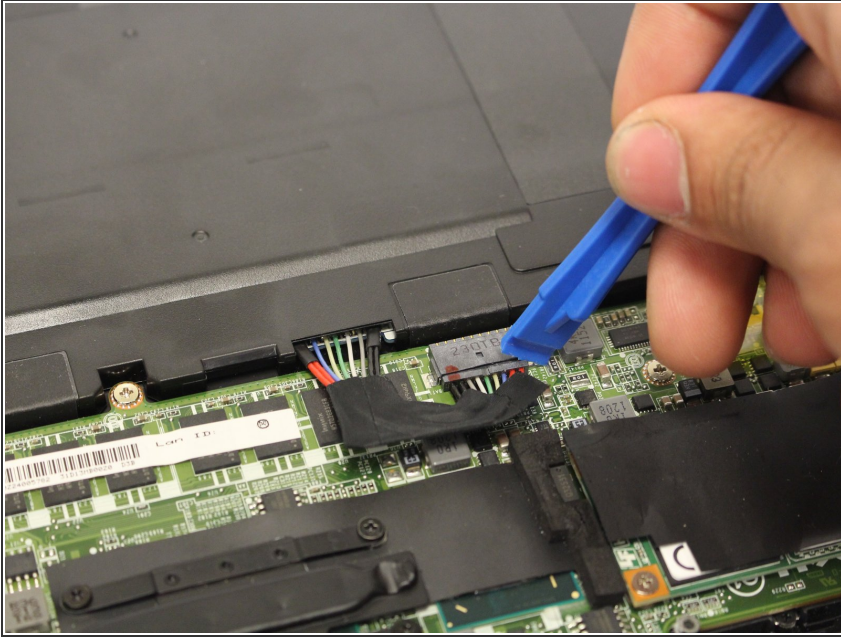
- Remove ten 3mm screws from the back cover with a **T4** screwdriver.

Step 2



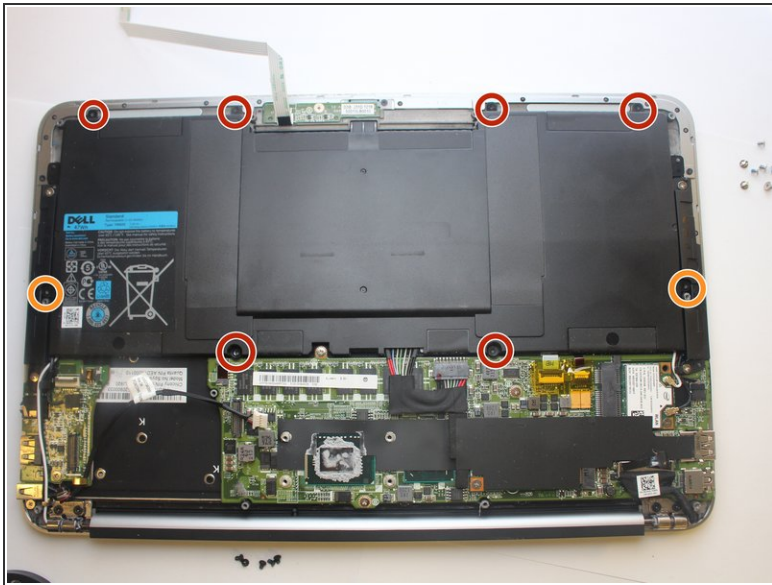
- Disconnect the ribbon cable with a plastic iFixit opening tool, by lifting up the black clip and by pulling the white ribbon off.
- Pull aside the ribbon cable.

Step 3



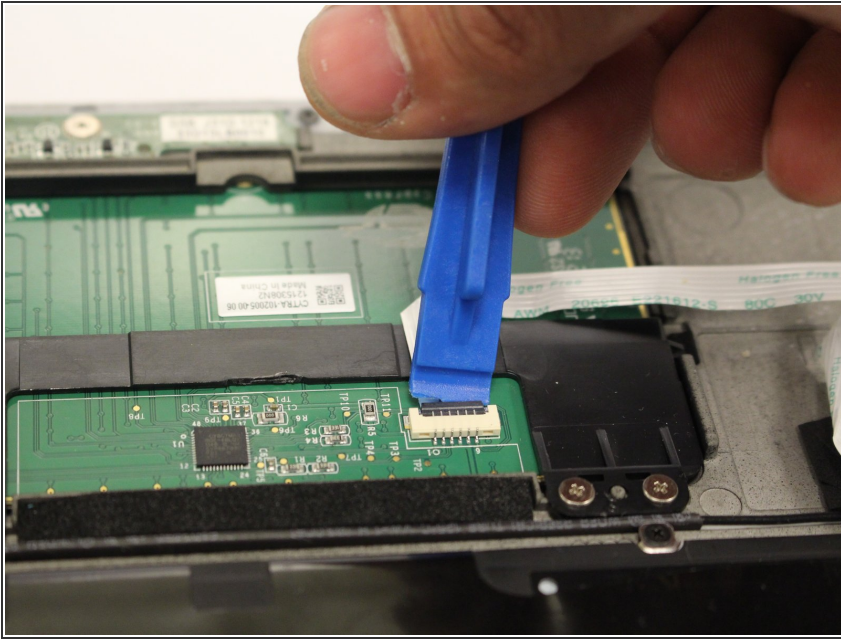
- With a plastic iFixit opening tool, insert it in between and remove the battery cable.

Step 4



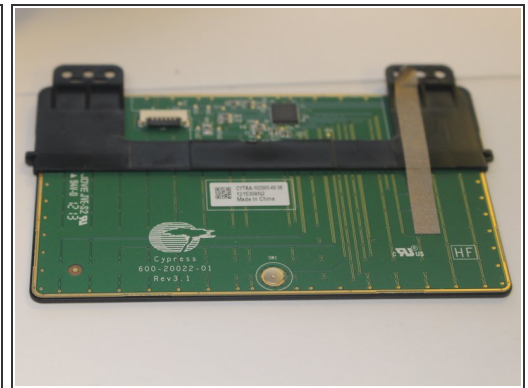
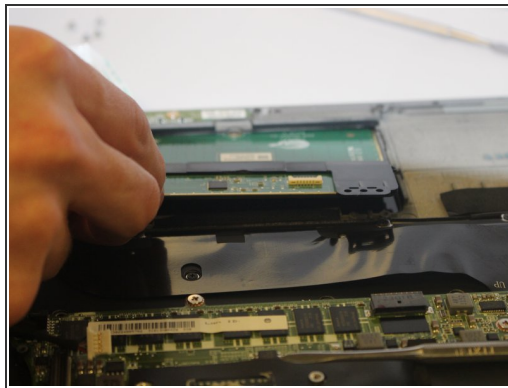
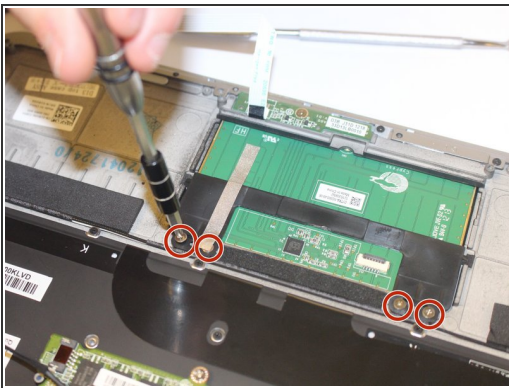
- Use a **PH00** size screwdriver to remove the 8 screws that secure the battery.
- Six 3mm screws.
- Two 5mm screws.
- Lift the battery out.

Step 5



- Disconnect the ribbon cable with a plastic iFixit opening tool by lifting up the black clip and by pulling the white ribbon.
- Place aside.

Step 6



- Remove four 2mm screws with a **PH00** screwdriver.
- Remove the mouse pad.