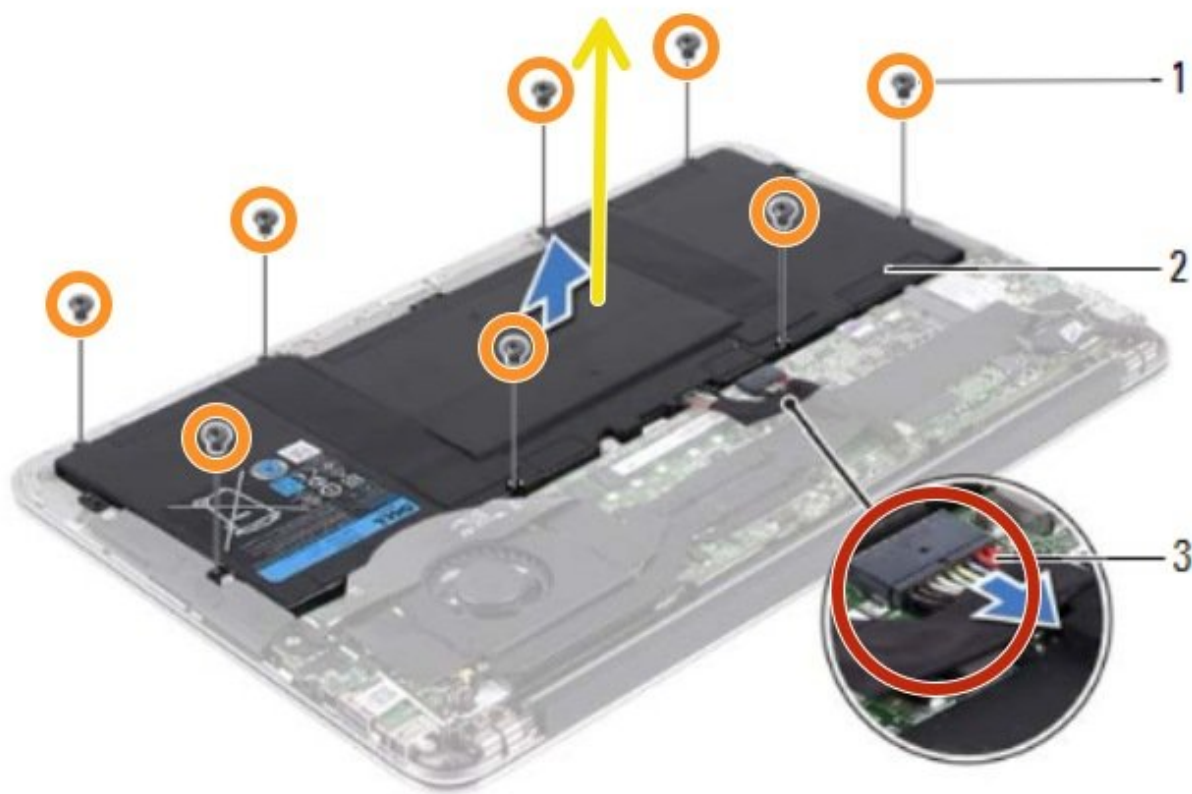




Dell XPS 13 L322X Battery Replacement

How to remove the battery of a Dell XPS 13 L322X laptop.

Written By: Johnathan Hammond



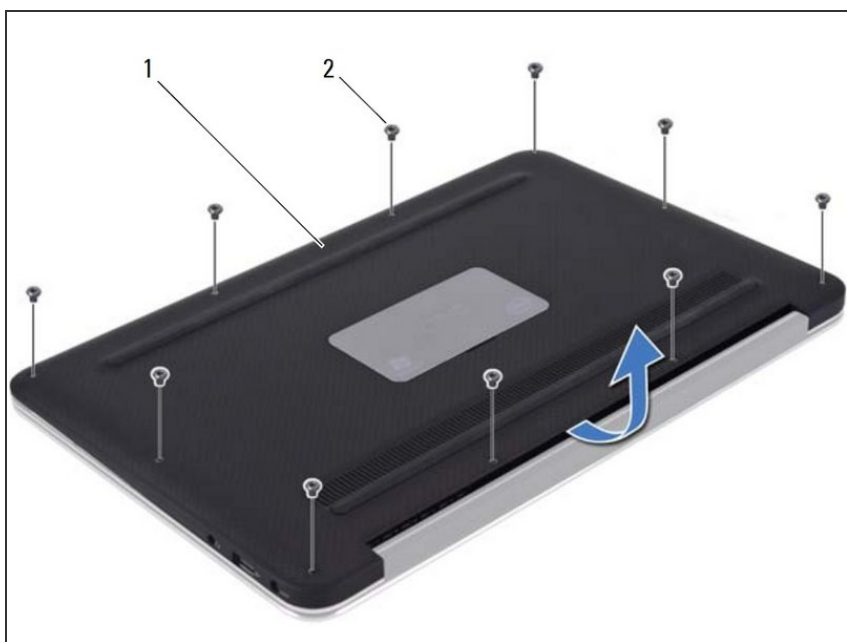
INTRODUCTION

How to remove the battery of a Dell XPS 13 L322X laptop. The images and information in this guide were taken from this computer's service manual, which can be found on the product page.

TOOLS:

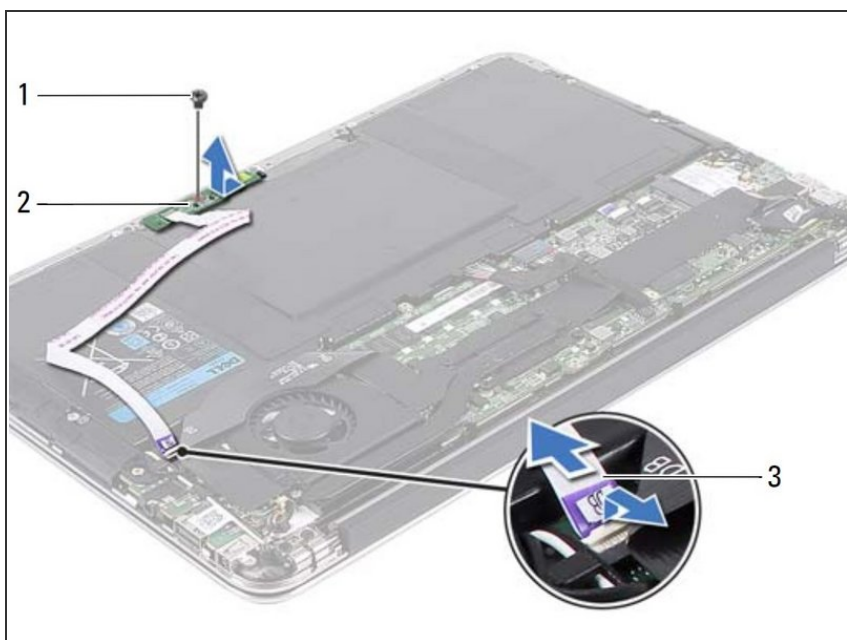
- [T5 Torx Screwdriver](#) (1)
 - [Phillips #0 Screwdriver](#) (1)
-

Step 1 — Removing the Base Cover



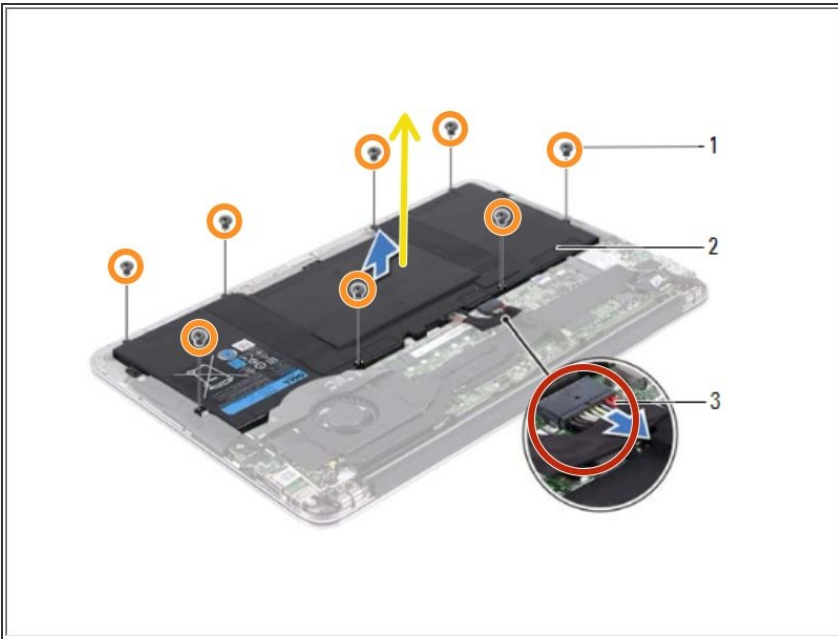
- After turning off the computer, use a Torx 5 screwdriver to remove the 10 screws (#2) from the computer's base.
- Using a prying tool or a fingernail, lift up the base cover (#1).

Step 2 — Removing the Power-Light Board



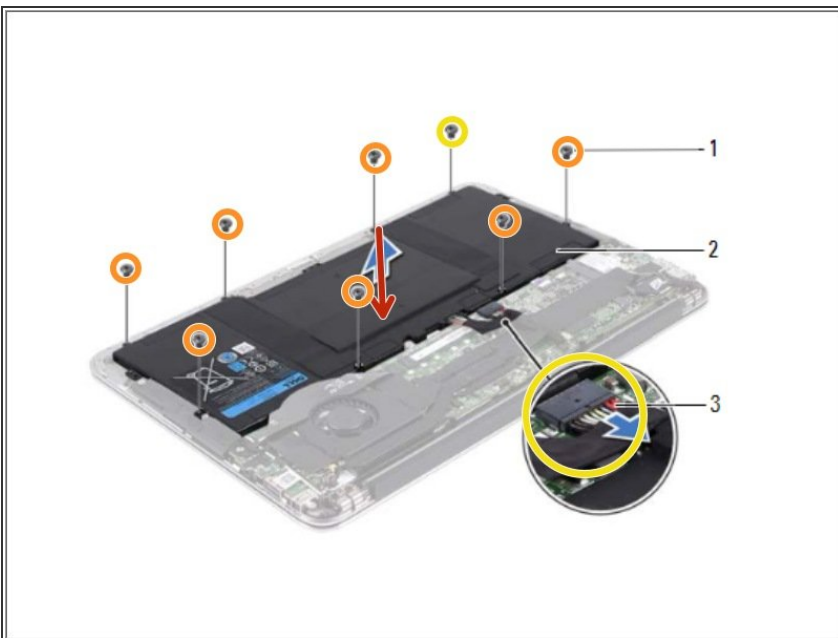
- Lift up the small latch which holds down the power-light board cable (#3) down. Remove the cable by pulling out sideways.
- After removing the Philips screw which holds down the power-light board (#1), remove the power light board (#2) and its cable.

Step 3 — Remove Old Battery



- Disconnect the battery cable from the system-board.
- Remove the screws that secure the battery to the palm-rest assembly.
- Lift the battery off the palm-rest assembly.

Step 4 — Adding New Battery



- Align the screw holes on the **New** battery with the screw holes on the palm-rest assembly.
- Replace the screws that secure the battery to the palm-rest assembly.
- Connect the battery cable to the system-board.

To reassemble your device, reattach the power board cable and screw back on the base cover.