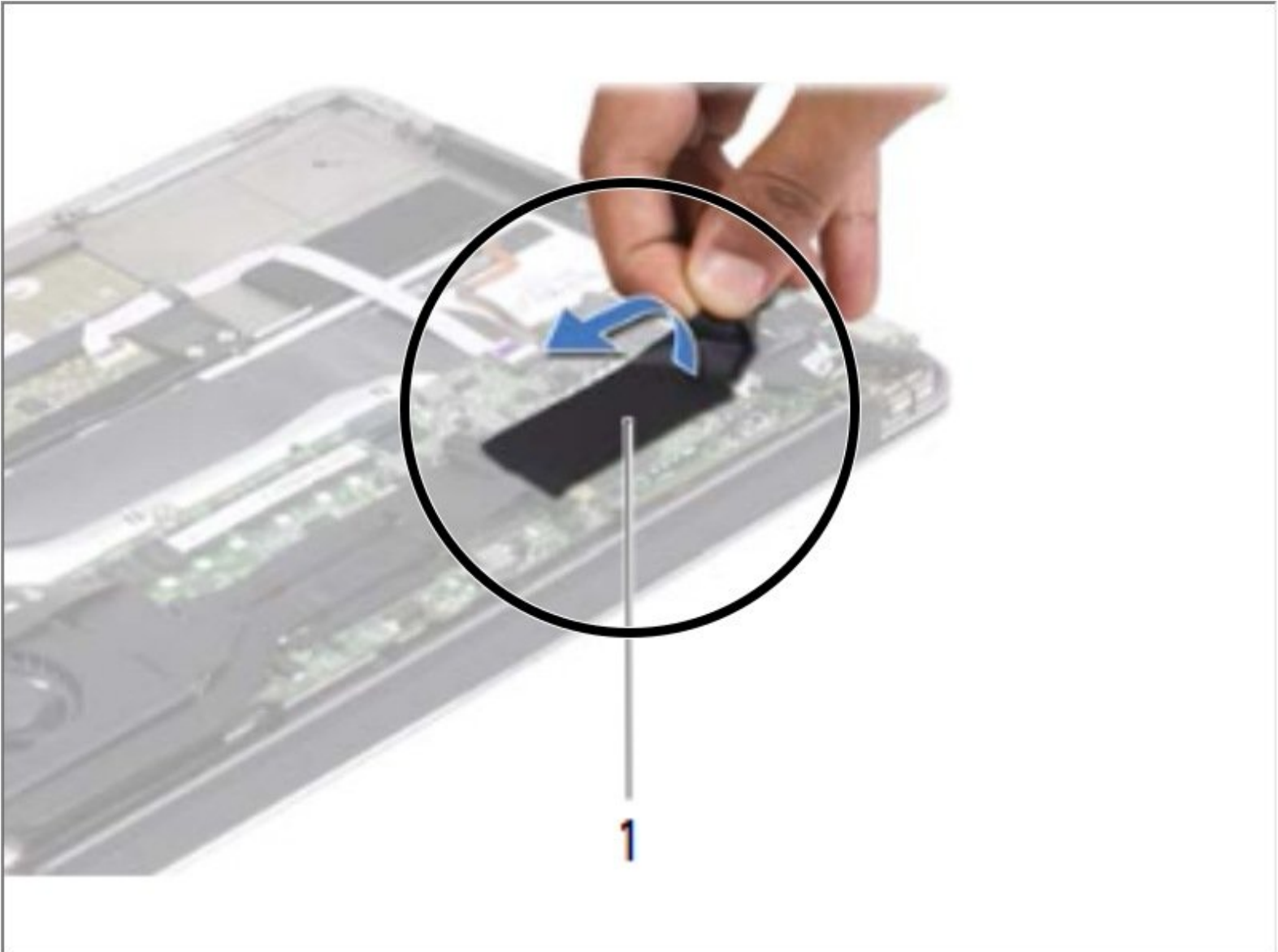




# Dell XPS 13 L322X Solid-State Drive Replacement

How to replace the mSata SSD drive in a Dell XPS 13 L322X laptop.

Written By: Johnathan Hammond



---

## INTRODUCTION

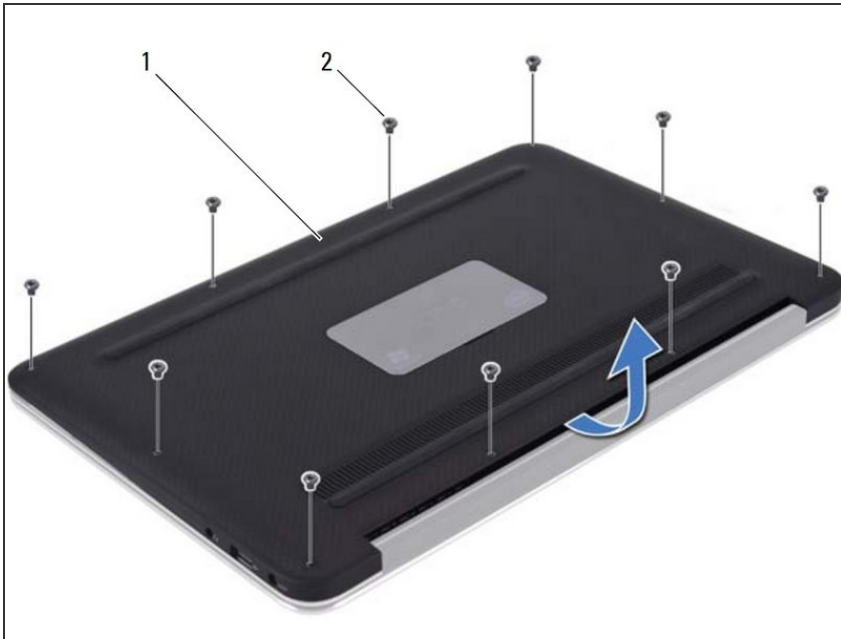
How to replace the mSata SSD drive in a Dell XPS 13 L322X laptop. The images and information in this guide were taken from this computer's service manual, which can be found on the product page.

---

### TOOLS:

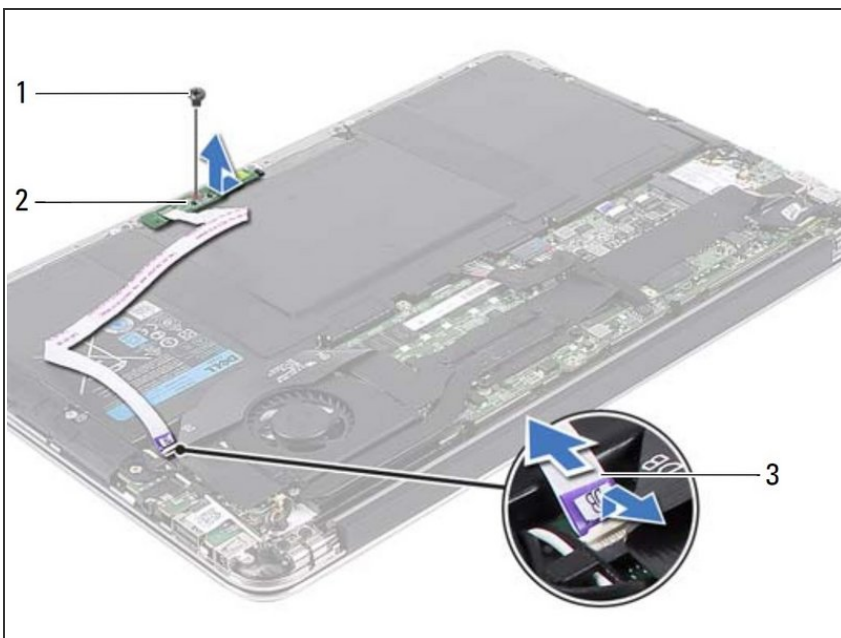
- [T5 Torx Screwdriver](#) (1)
  - [Phillips #0 Screwdriver](#) (1)
-

## Step 1 — Removing the Base Cover



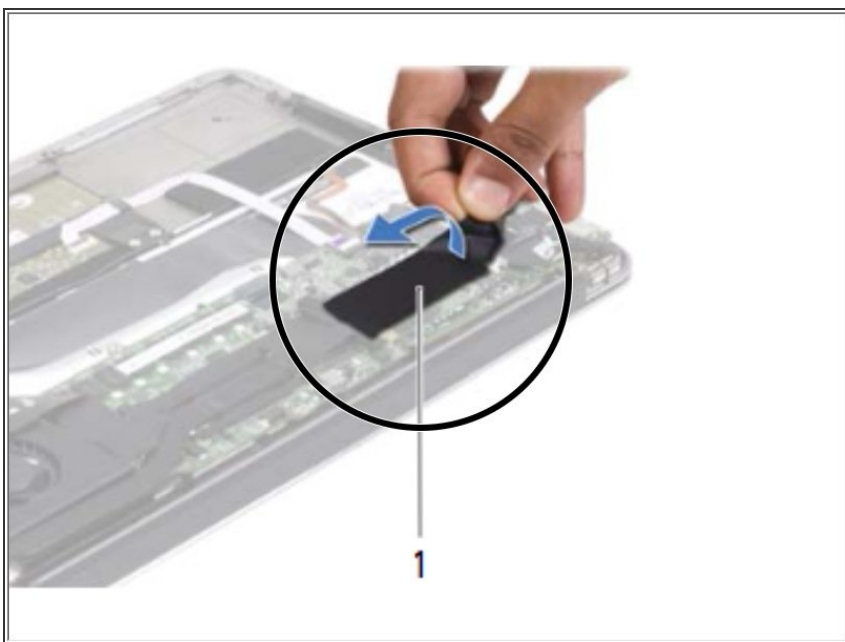
- After turning off the computer, use a Torx 5 screwdriver to remove the 10 screws (#2) from the computer's base.
- Using a prying tool or a fingernail, lift up the base cover (#1).

## Step 2 — Removing the Power-Light Board



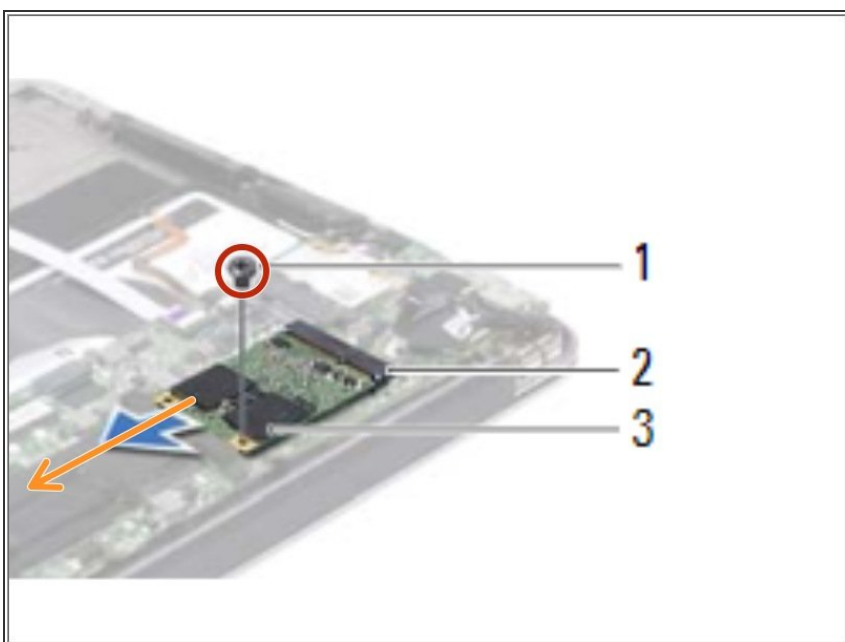
- Lift up the small latch which holds down the power-light board cable (#3) down. Remove the cable by pulling out sideways.
- After removing the Philips screw which holds down the power-light board (#1), remove the power light board (#2) and its cable.

### Step 3 — Peeling the Tape



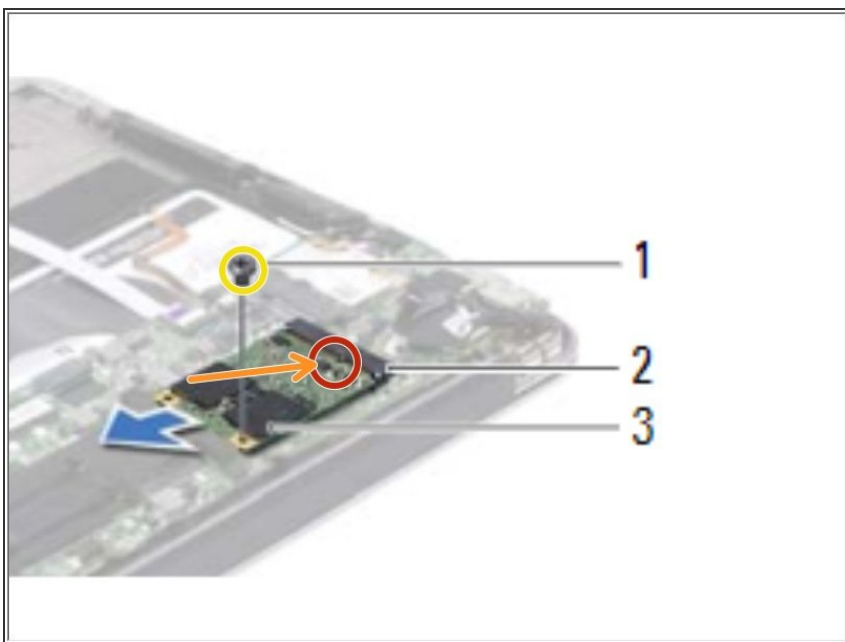
- Peel the tape that is adhered over the solid-state drive.

### Step 4 — Removing the Solid-State Drive



- Remove the screw that secures the solid-state drive to the system board.
- Slide and remove the solid-state drive out of the system-board connector.

## Step 5 — Inserting the new Solid-State Drive

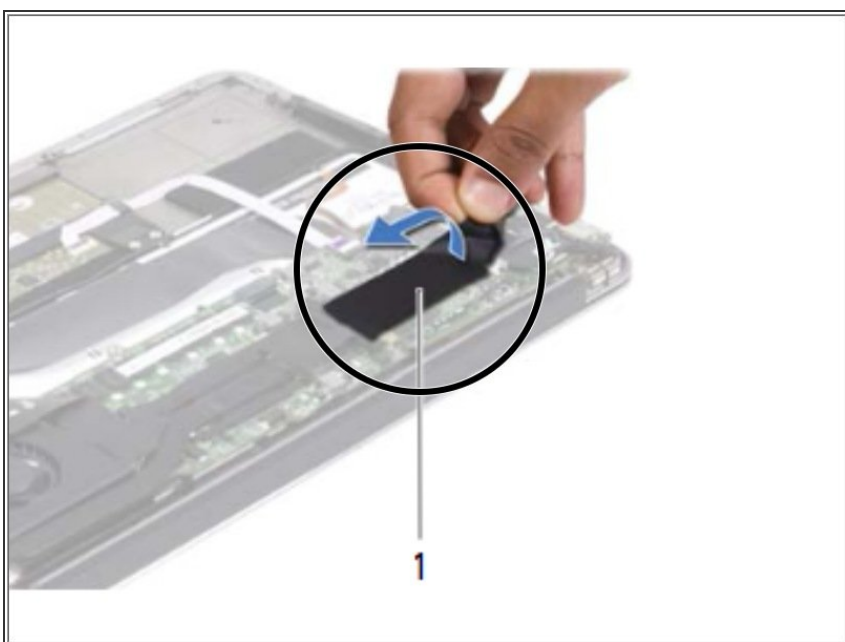


- Align the notch on the **NEW** solid-state drive with the tab in the system-board connector.

**CAUTION:** Use firm and even pressure to slide the solid-state drive into place. If you use excessive force, you may damage the connector.

- Insert the solid-state drive connector at a 45-degree angle into the system-board connector.
- Replace the screw that secures the solid-state drive to the system board.

## Step 6 — Adding the Tape



- Adhere the tape over the solid-state drive.

To reassemble your device, reattach the power board cable and screw back on the base cover.