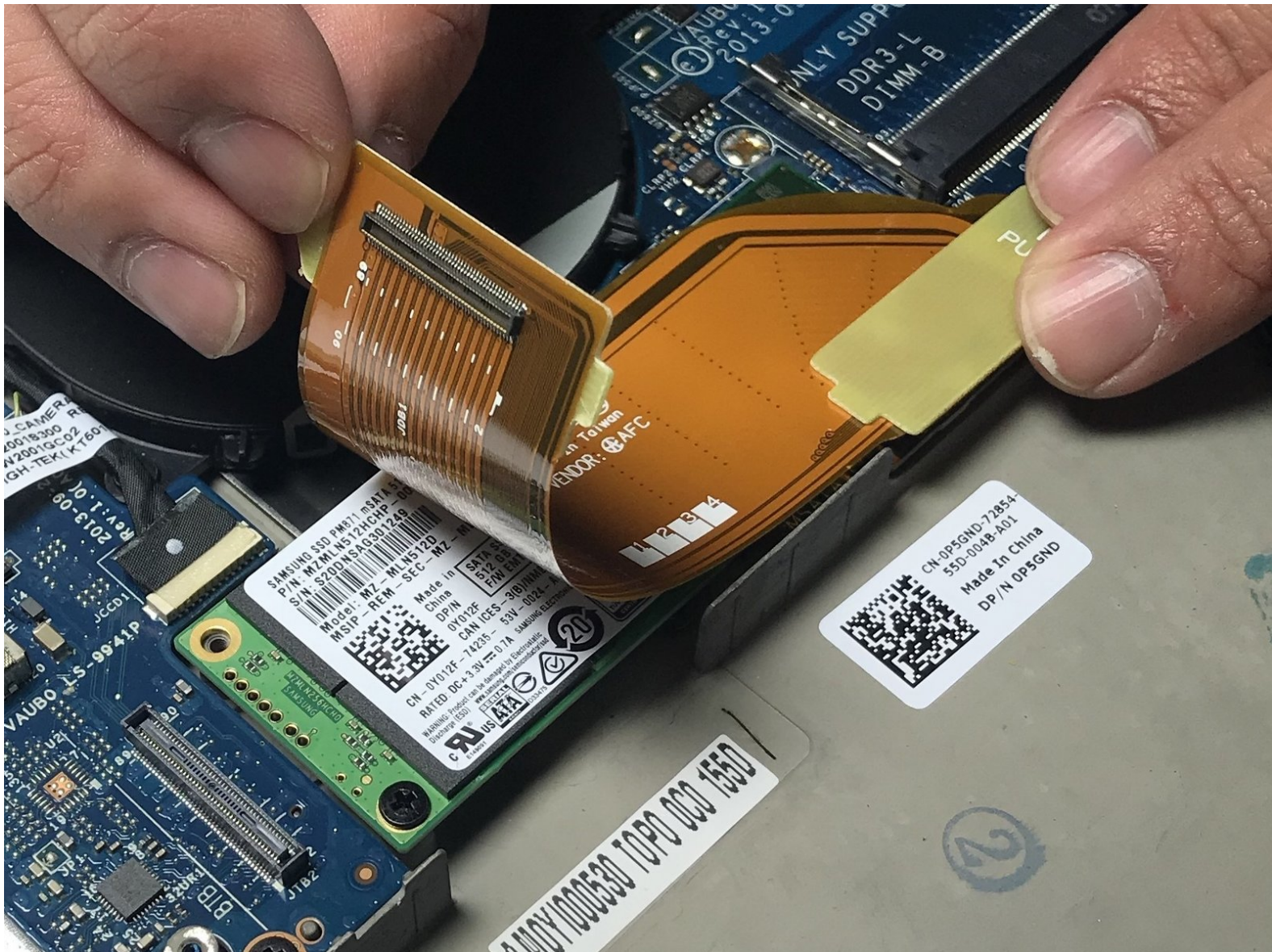




Dell XPS 15 9530 SSD Replacement

How to replace a Dell XPS 15 9530 SSD.

Written By: Larissa Omura



INTRODUCTION

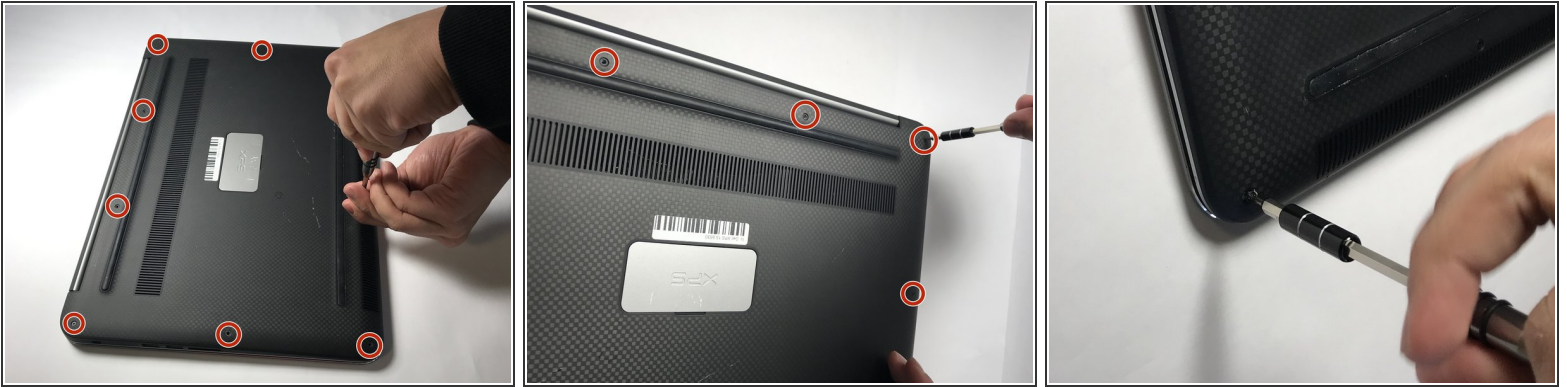
Removal of the solid state drive will be covered in this guide. To successfully remove the battery, a #0 Phillips screwdriver, and T5 Torx screwdriver are needed. Be careful disconnecting cables as to not break them or their connectors.



TOOLS:

- [T5 Torx Screwdriver](#) (1)
 - [Phillips #0 Screwdriver](#) (1)
-

Step 1 — Base Cover



- Using a T5 Torx screwdriver, remove ten 3mm screws.

Step 2



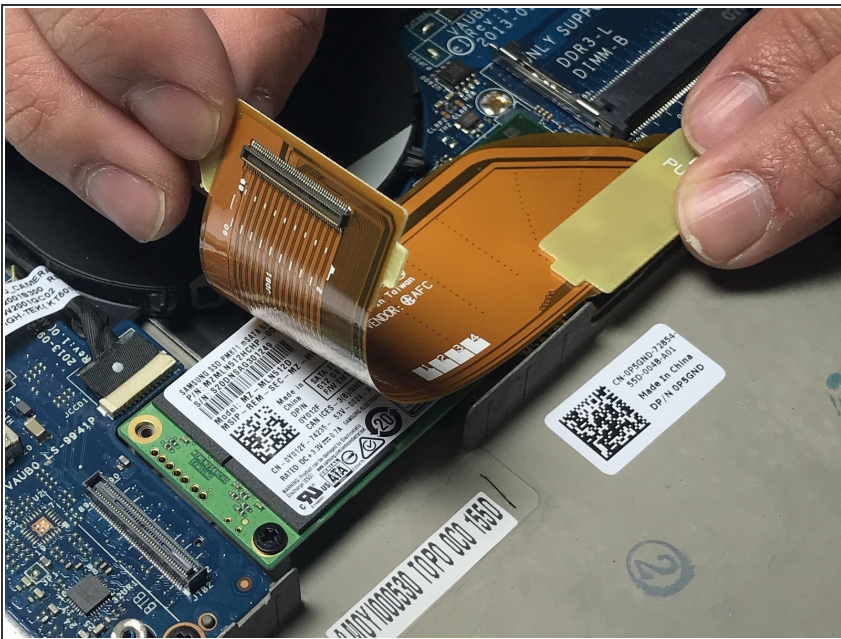
- Lift the plastic tab.
- Remove two 3mm Phillips #0 screws under the plastic tab.

Step 3



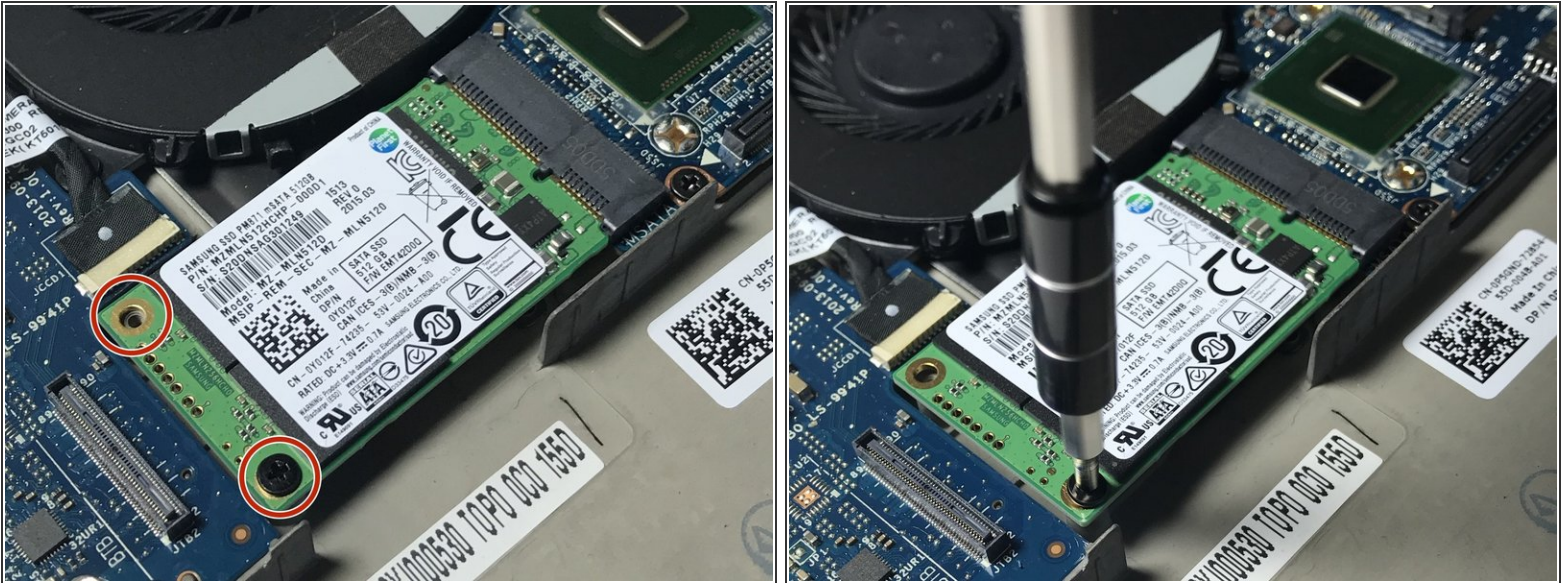
- Lift the lower case off.

Step 4 — SSD



- Pull lift tabs and remove the plastic that covers the hard drive to expose the hard drive.

Step 5



- Using a Phillips #0 screwdriver, remove two 2.5mm screws that secure the SSD to the chassis.

Step 6



- Pull the SSD out parallel to the mainboard.

To reassemble your device, follow these instructions in reverse order.