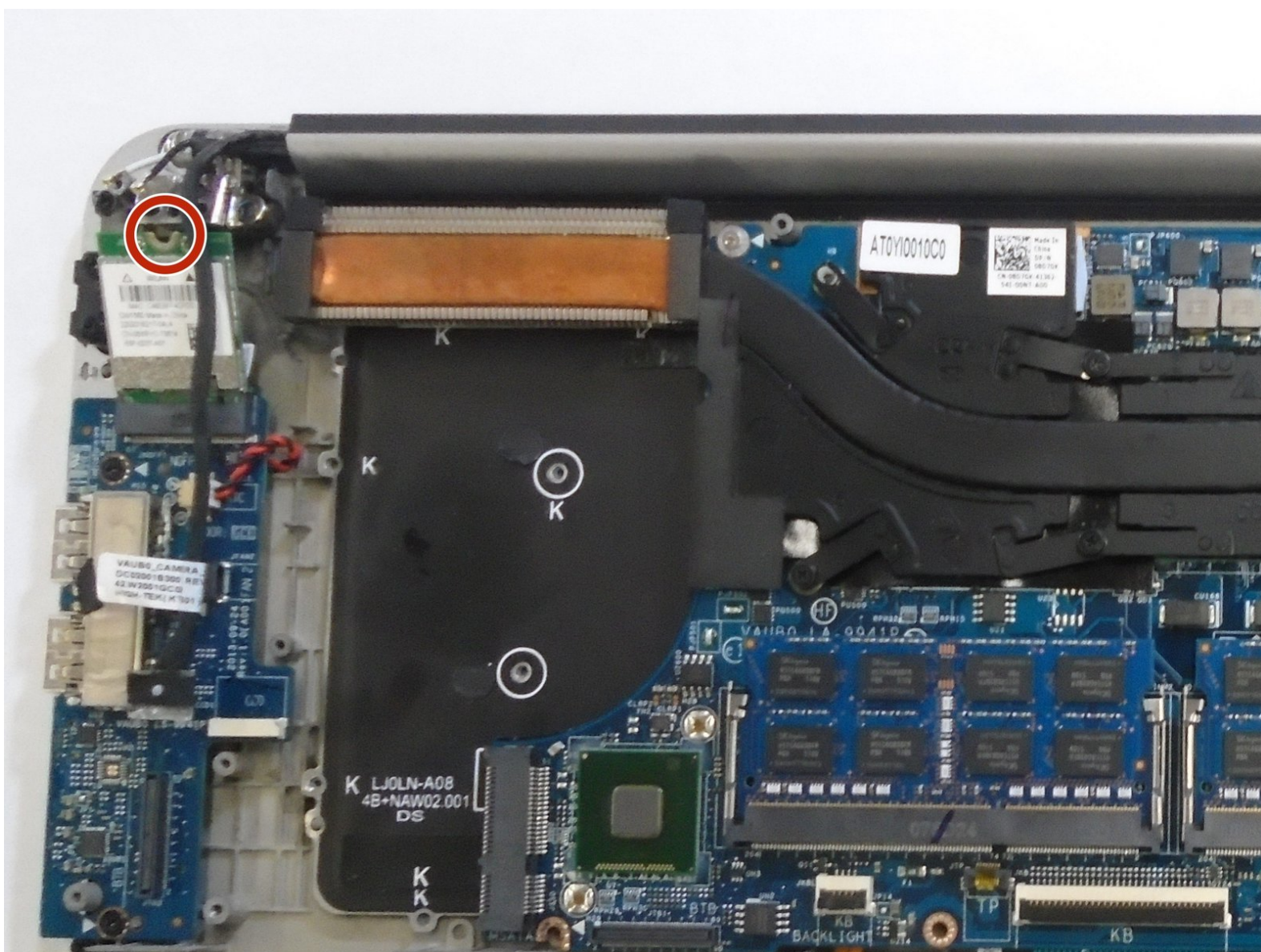




# Dell XPS 15 9530 Wifi card Replacement

This guide serves to walk users through the removal of the Wifi Card for the Dell XPS 15 9530 laptop

Written By: Matt





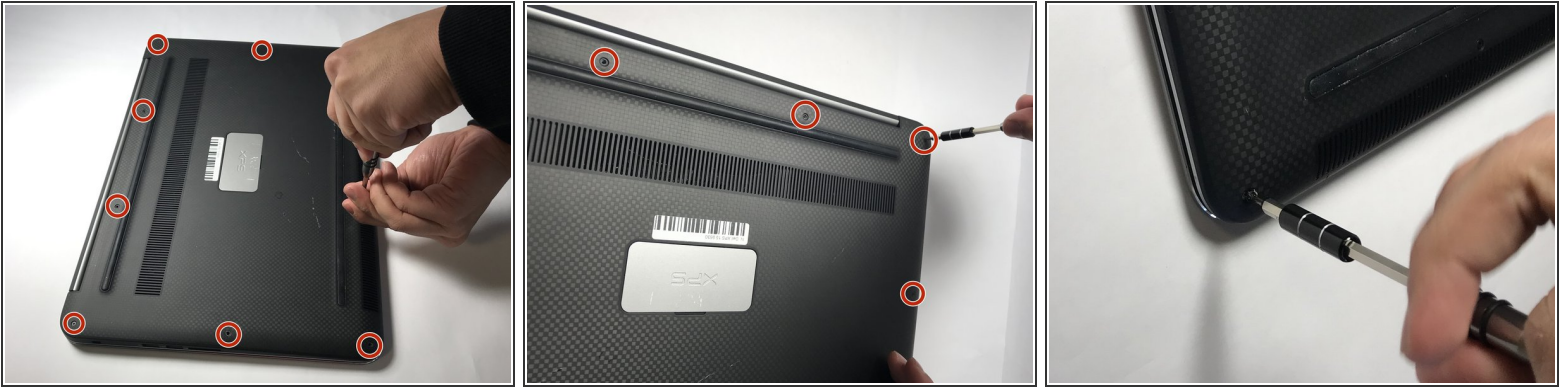


## TOOLS:

- [T5 Torx Screwdriver](#) (1)
  - [Phillips #0 Screwdriver](#) (1)
-



## Step 1 — Base Cover



- Using a T5 Torx screwdriver, remove ten 3mm screws.

## Step 2



- Lift the plastic tab.
- Remove two 3mm Phillips #0 screws under the plastic tab.

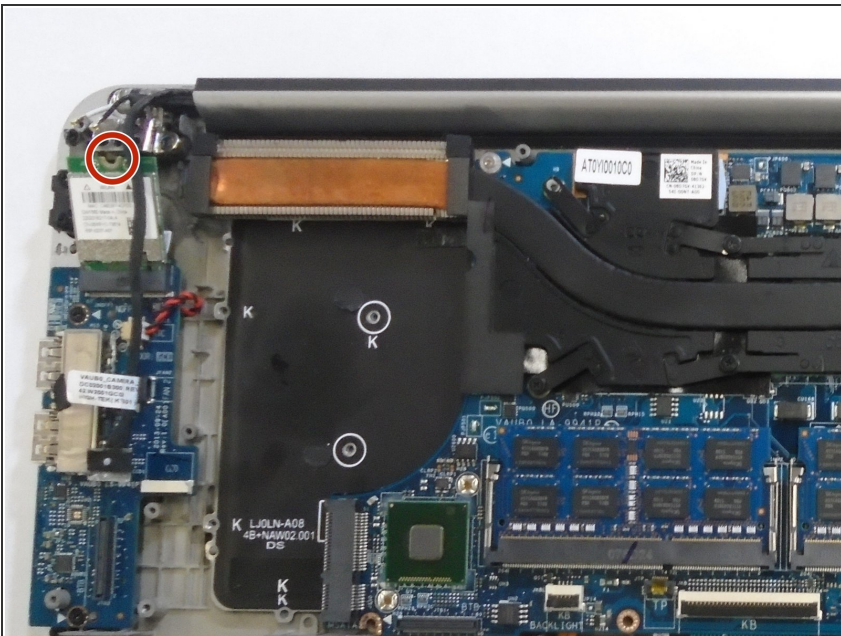


## Step 3



- Lift the lower case off.

## Step 4 — Wifi card



- Use a Phillips #0 screwdriver to remove the screw holding the Wifi card down.
- Take the Wifi card out.

To reassemble your device, follow these instructions in reverse order.