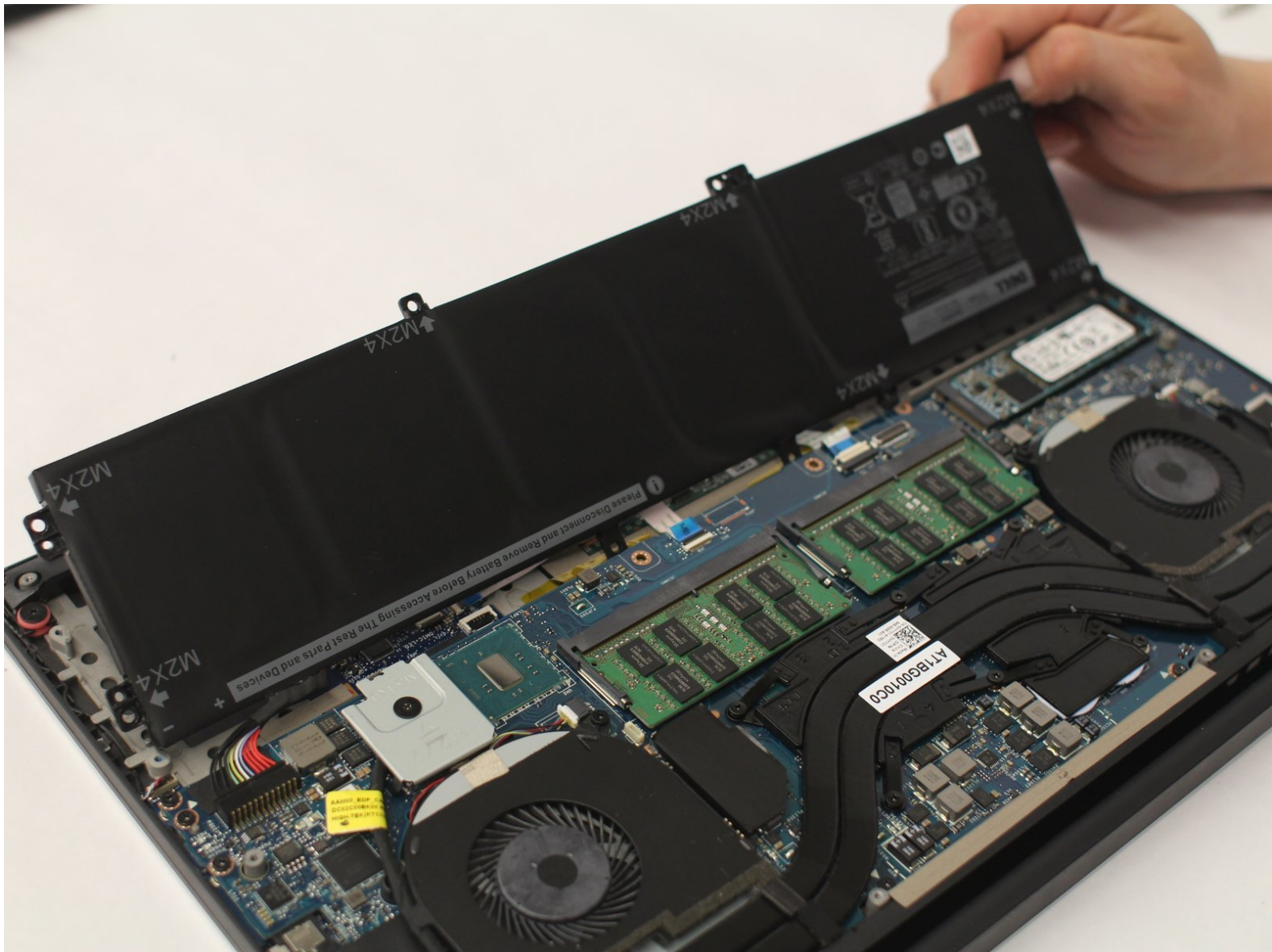




Dell XPS 15 9550 Battery Replacement

How to replace the battery of the Dell XPS 15 9550.

Written By: Brandon Schmidt



INTRODUCTION

If your Dell XPS 15 9550 laptop will not power on without being plugged in or not hold a charge for an extended period of time, you may need to replace your battery.



TOOLS:

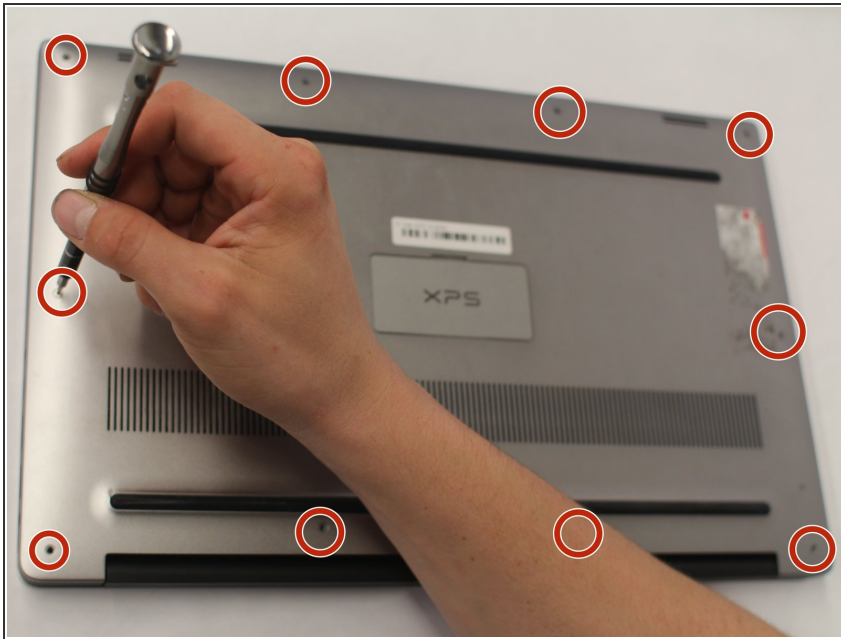
- [T5 Torx Screwdriver](#) (1)
- [Phillips #00 Screwdriver](#) (1)



PARTS:

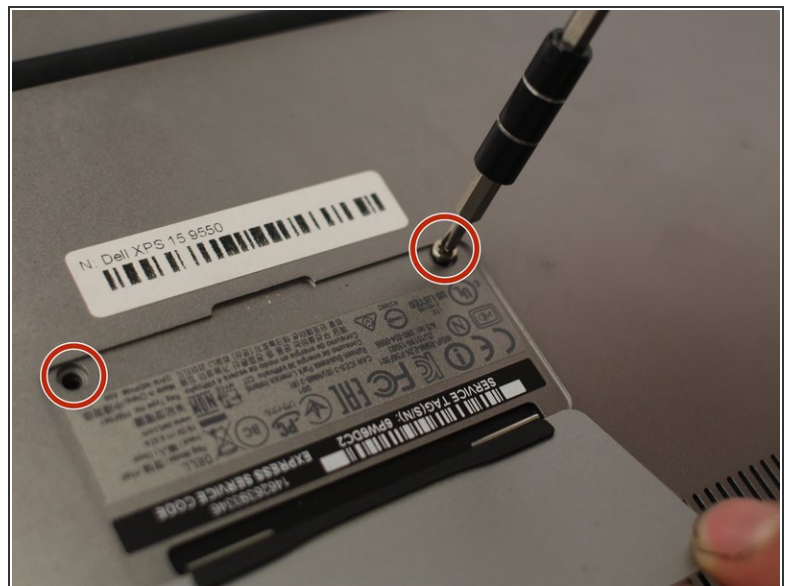
- [Dell XPS 15 9550 and 5510 Precision 56 Wh Replacement Battery](#) (1)
- [Dell XPS 15 9550 and 5510 Precision 84 Wh Replacement Battery](#) (1)

Step 1 — Back/Underside Panel



- Turn the laptop upside down.
- ⚠ Make sure the laptop is turned off.
- Using a T5 Torx Screwdriver, remove the ten 3 mm long screws from the perimeter of the back of the laptop.

Step 2



- Open up the information panel door (on the middle of the back side).
- While holding the door open, use a Phillips #00 Screwdriver to remove the two 10 mm long screws.

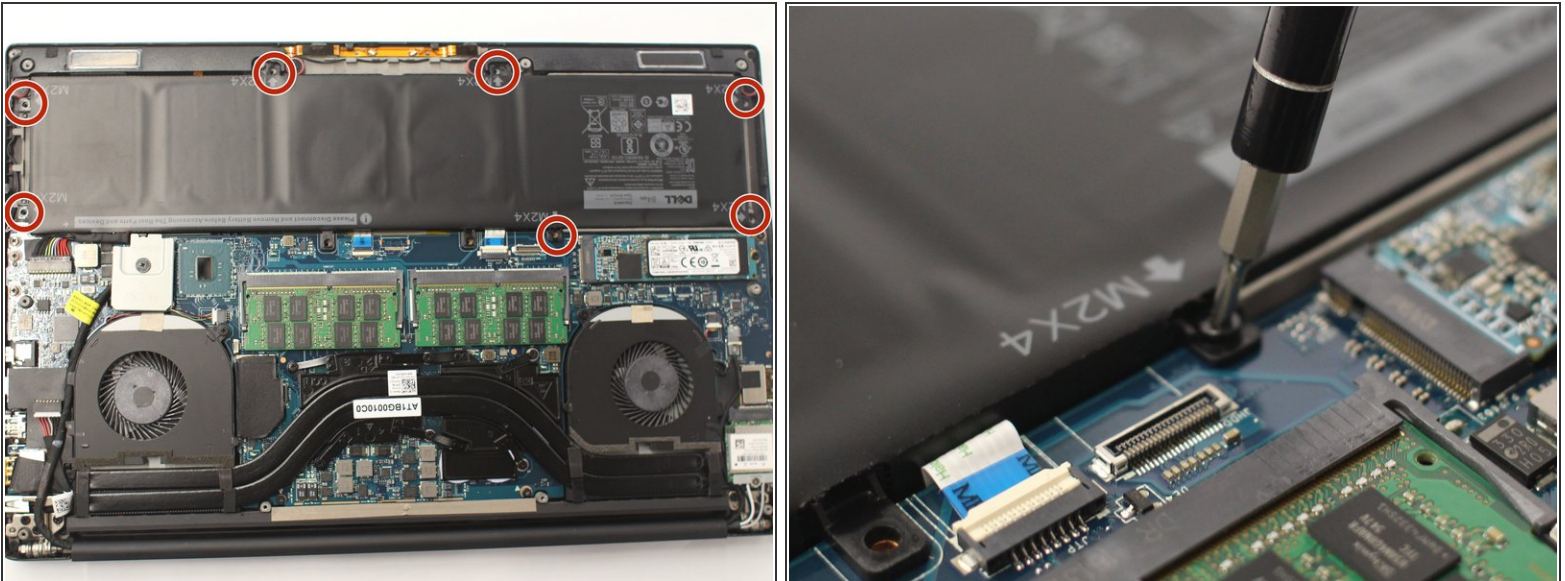
Step 3



- Carefully lift the 2 corners of the back panel close to the hinge upwards, releasing the whole panel.

⚠ Do not force the panel off. If it does not come off easily, try using a plastic spudger where it is stuck.

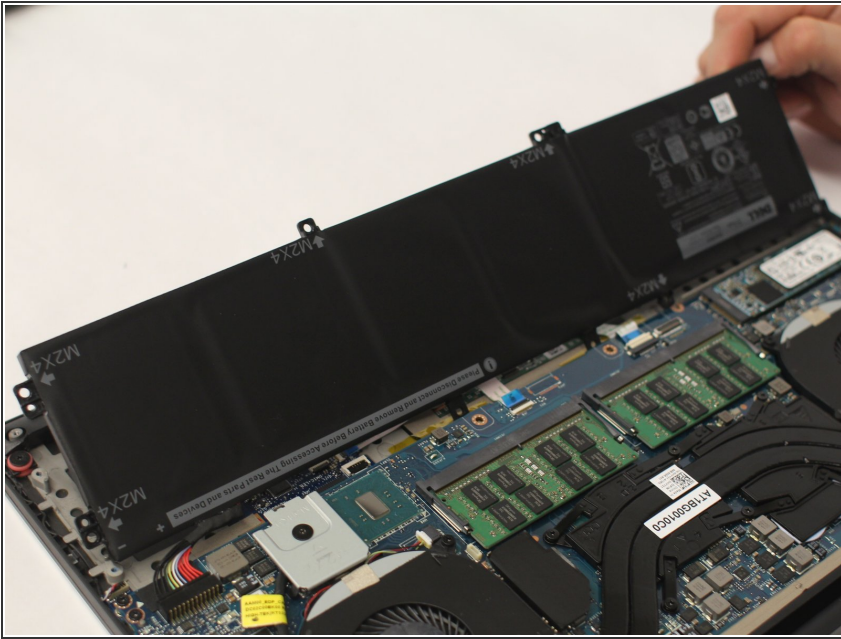
Step 4 — Battery



- Using a Philips #00 Screwdriver, remove the seven 3 mm long screws from the perimeter of the battery.

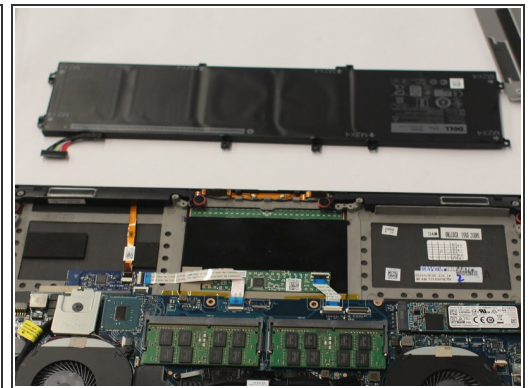
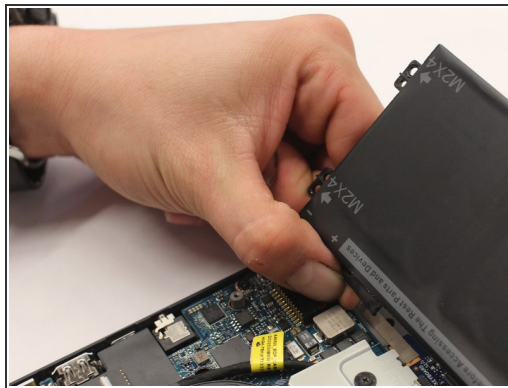
i Each screw is labeled "M2X4" with an arrow pointing to the screw.

Step 5



- Gently lift up on the backside of the battery.

Step 6



- Firmly grasp the black connector on both sides.
- Carefully pull the connector towards the battery, releasing the connector and the battery from the laptop.

To reassemble your device, follow these instructions in reverse order.