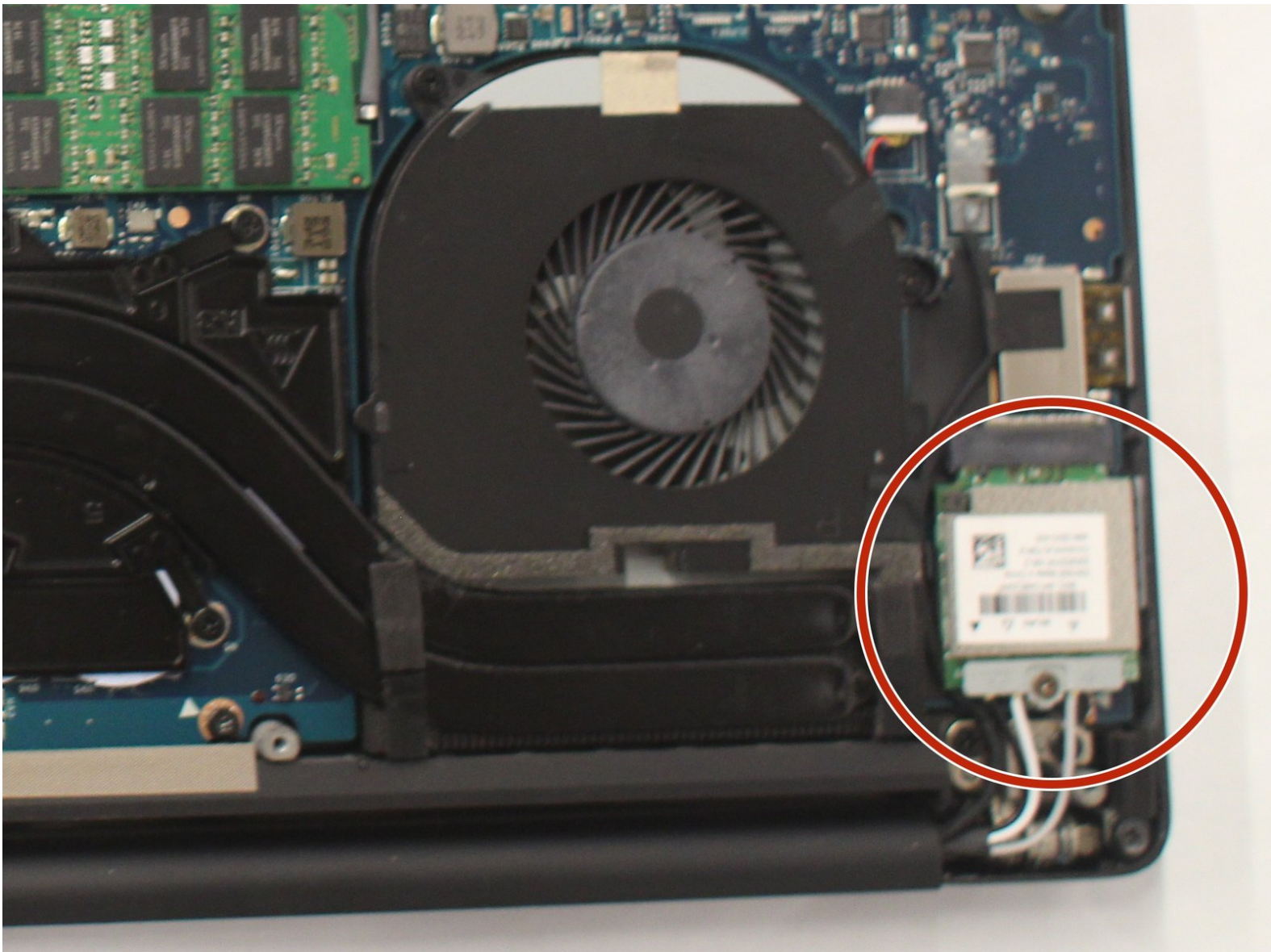




# Dell XPS 15 9550 Wireless Card Replacement

This guide will be a walk through the steps to take out the Wi-Fi card in your Dell XPS 15 9550.

Written By: Hunter J Laska



---

## INTRODUCTION

If the laptop will not connect to wireless internet, you may need a new wireless card.

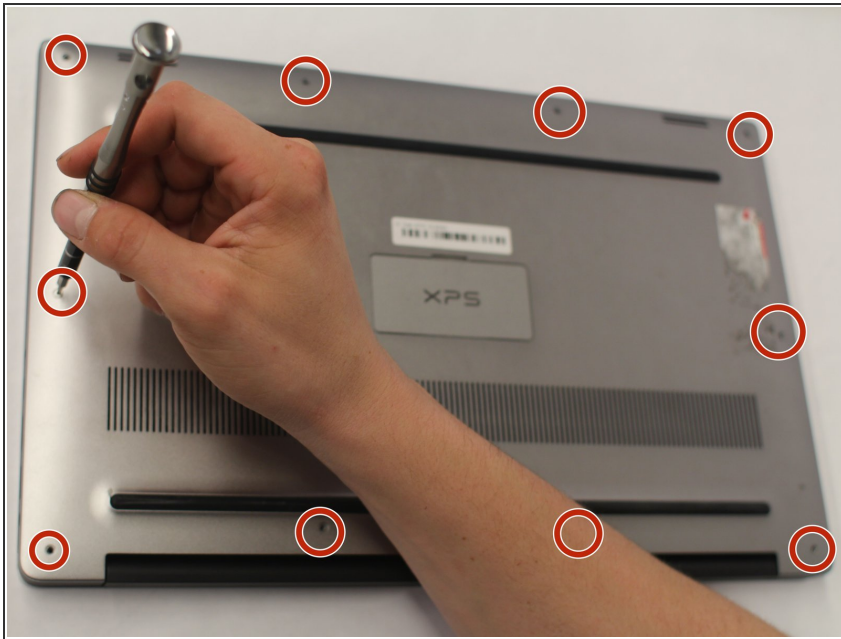
---



### TOOLS:

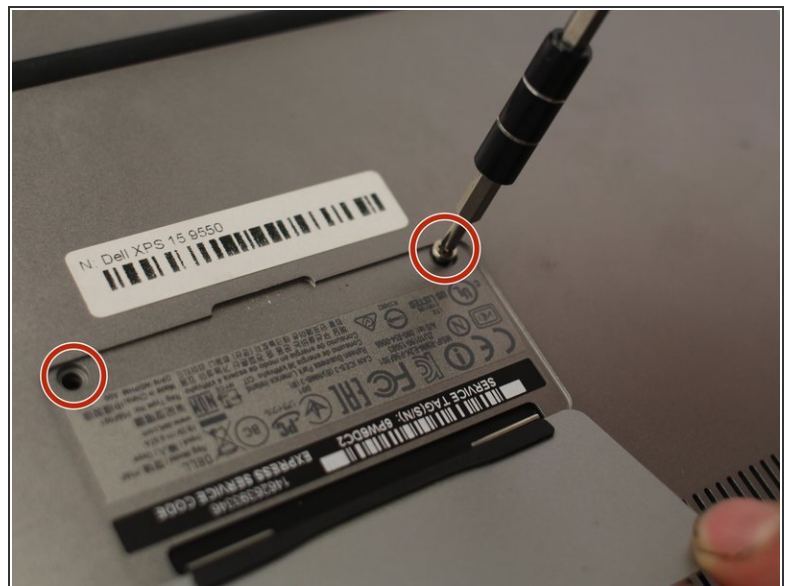
- [T5 Torx Screwdriver](#) (1)
  - [Phillips #00 Screwdriver](#) (1)
-

## Step 1 — Back/Underside Panel



- Turn the laptop upside down.
- ⚠ Make sure the laptop is turned off.
- Using a T5 Torx Screwdriver, remove the ten 3 mm long screws from the perimeter of the back of the laptop.

## Step 2




- Open up the information panel door (on the middle of the back side).
- While holding the door open, use a Phillips #00 Screwdriver to remove the two 10 mm long screws.



## Step 3



- Carefully lift the 2 corners of the back panel close to the hinge upwards, releasing the whole panel.

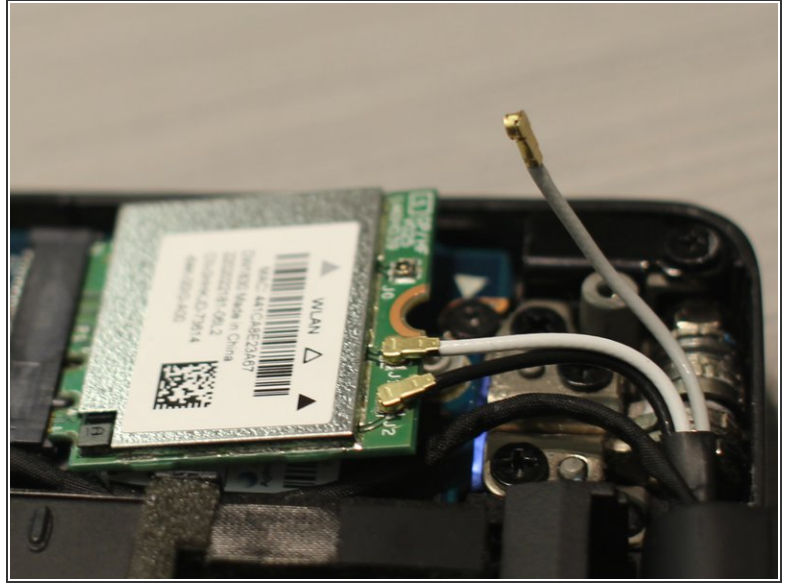
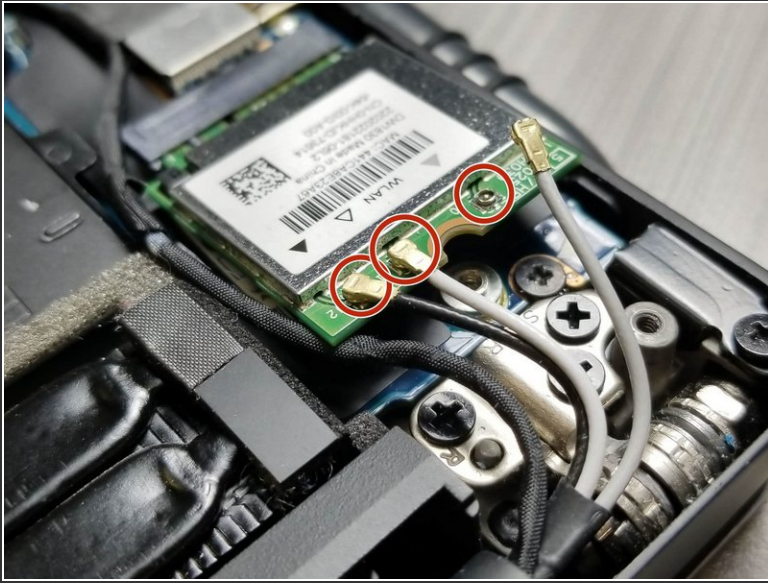
 Do not force the panel off. If it does not come off easily, try using a plastic spudger where it is stuck.

## Step 4 — Wireless Card



- With a Philips #00 Screwdriver bit, remove one 4 mm long black screw located by the antenna connections on the wireless card.
- Set the screw and metal holder aside.

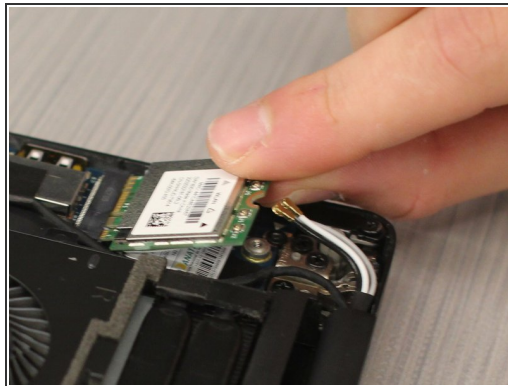
## Step 5



- Gently lift up each of the antennas (3) to disconnect them from the wireless card.

**i** These are similar to a coat button, the antennas snap on and snap off.

## Step 6



- With the antennas disconnected, gently pull the wireless card out at the angle it sits at.
- The wireless card has been successfully removed!

To reassemble your device, follow these instructions in reverse order.