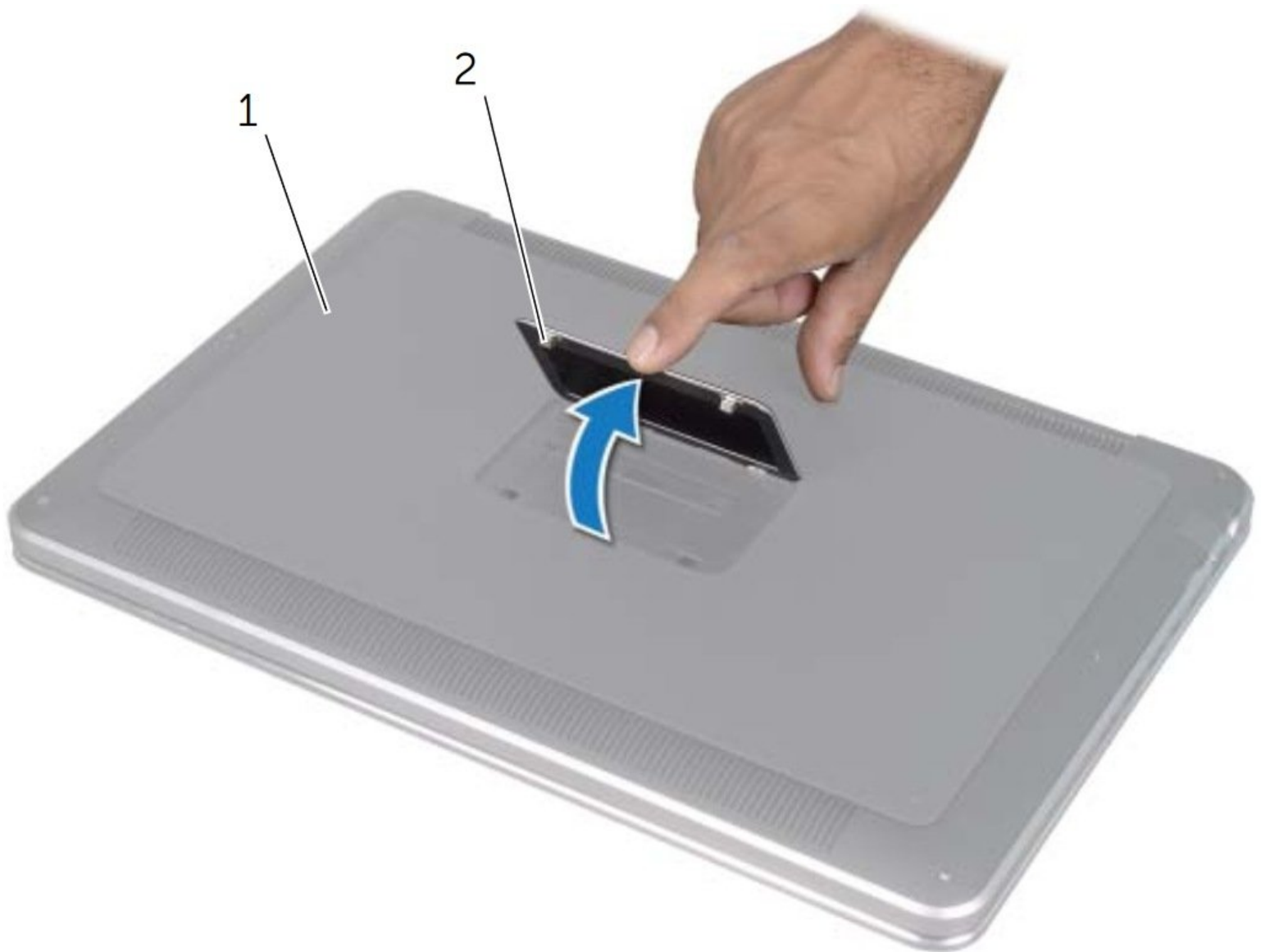




Dell XPS 15 L521X Base Cover Replacement

How to replace the base (bottom) cover on a Dell XPS 15 L521X.

Written By: William Daniels



INTRODUCTION

How to replace the base (bottom) cover on a Dell XPS 15 L521X.

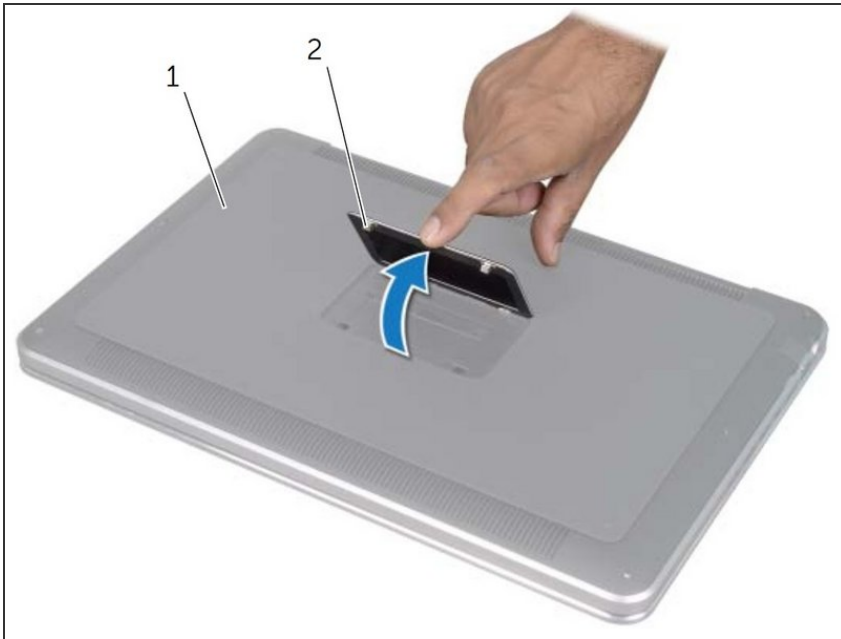
The information and pictures in this guide have been taken from the service manual from this device, listed on the product page. If you need any additional information on disassembling this device, please consult the service manual.



TOOLS:

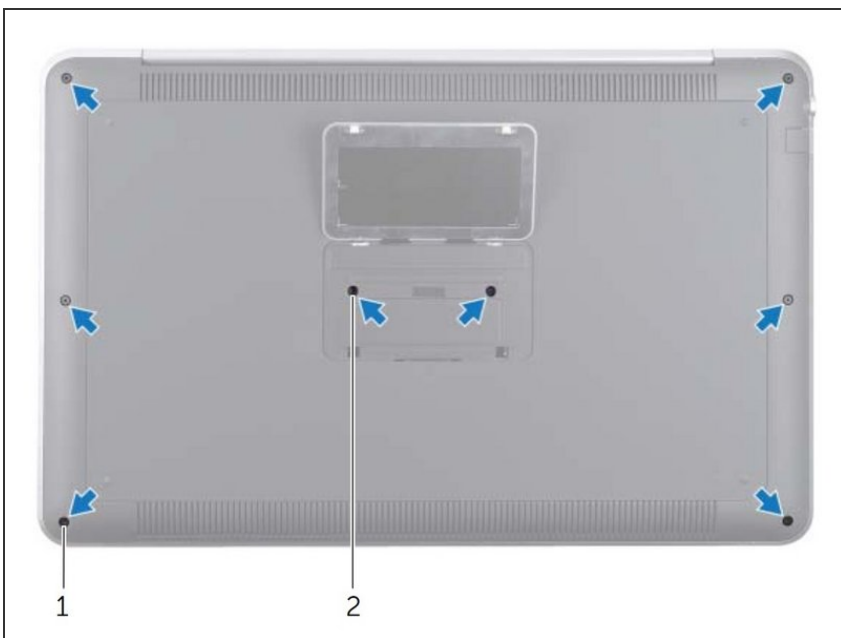
- [T5 Torx Screwdriver](#) (1)
 - [Phillips #0 Screwdriver](#) (1)
 - [Spudger](#) (1)
-

Step 1 — Turning Off the Computer, and Opening the System Badge



- After turning off the computer, turn over the laptop and lift up the system badge (#2).

Step 2 — Unscrewing the Base Cover



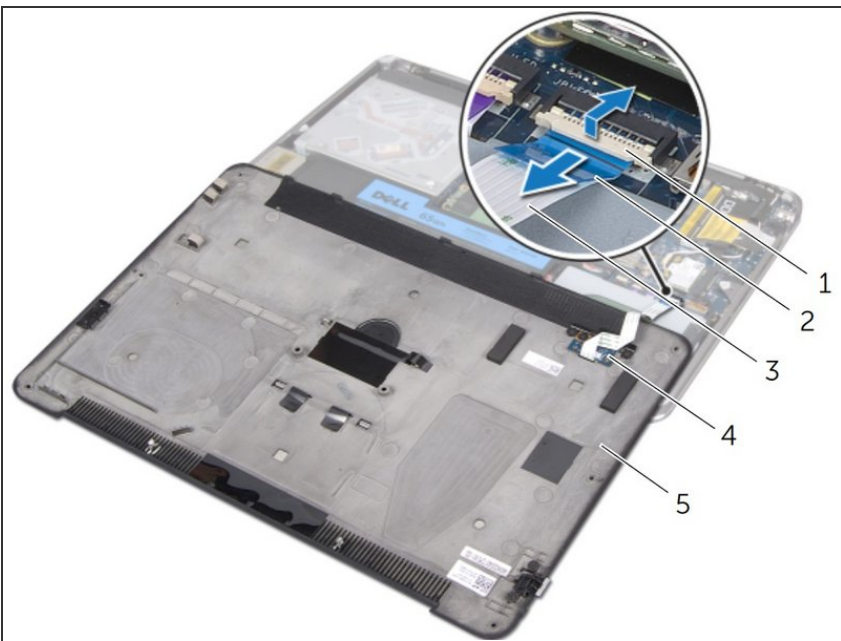
- Unscrew the six Torx screws (#1) along the base cover's edge and the two Philips screws (#2) under the system badge.

Step 3 — Pry Off Base Cover



- Snap the system badge back into place so that it can be removed along with the base cover.
- Using the spudger (or some other prying tool), pry the base cover away from the rest of the system.

Step 4 — Battery Indicator Cable Removal



- Remove the battery indicator cable (#3) from the white connector by lifting up the connector latch (#1) pulling on the tab (#2).
- Even if you do not plan on replacing the base cover entirely, decoupling this fragile cable will ensure that it doesn't get damaged if the base cover is moved for whatever reason.

To reassemble your device, follow these instructions in reverse order with the replacement component.