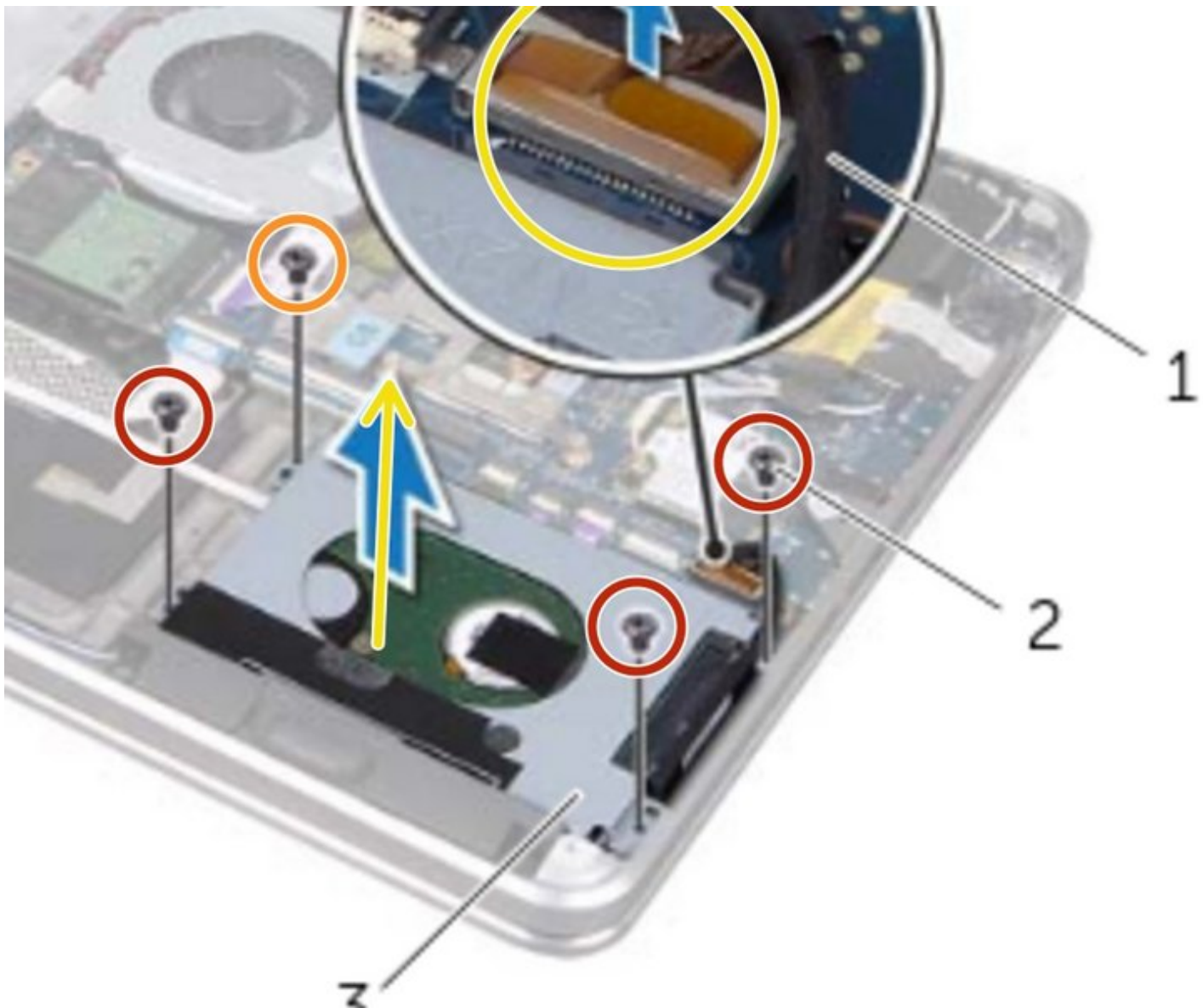




# Dell XPS 15 L521X Hard Drive Replacement

How to replace the hard drive of a Dell XPS 15 L521X.

Written By: Johnathan Hammond



---

# INTRODUCTION

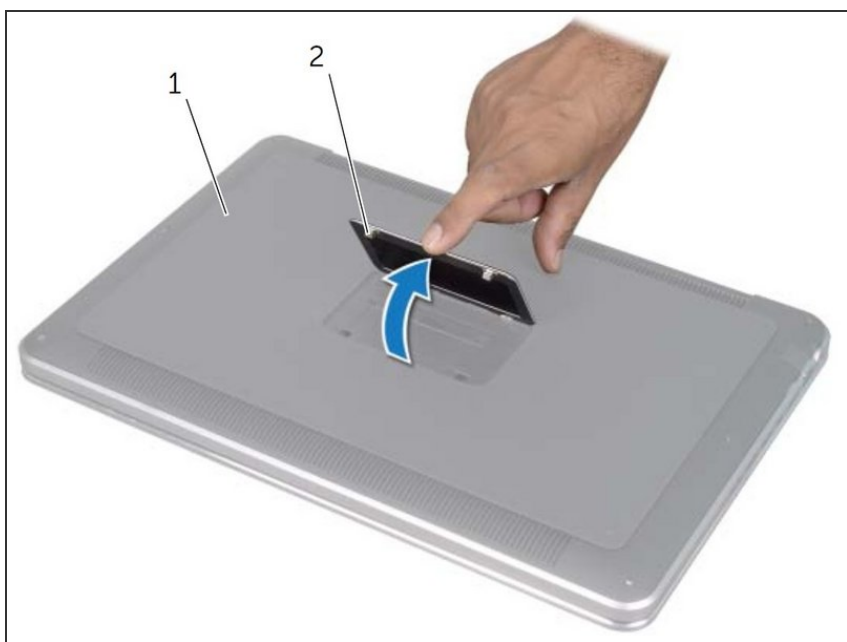
How to replace the hard drive of a Dell XPS 15 L521X.



## TOOLS:

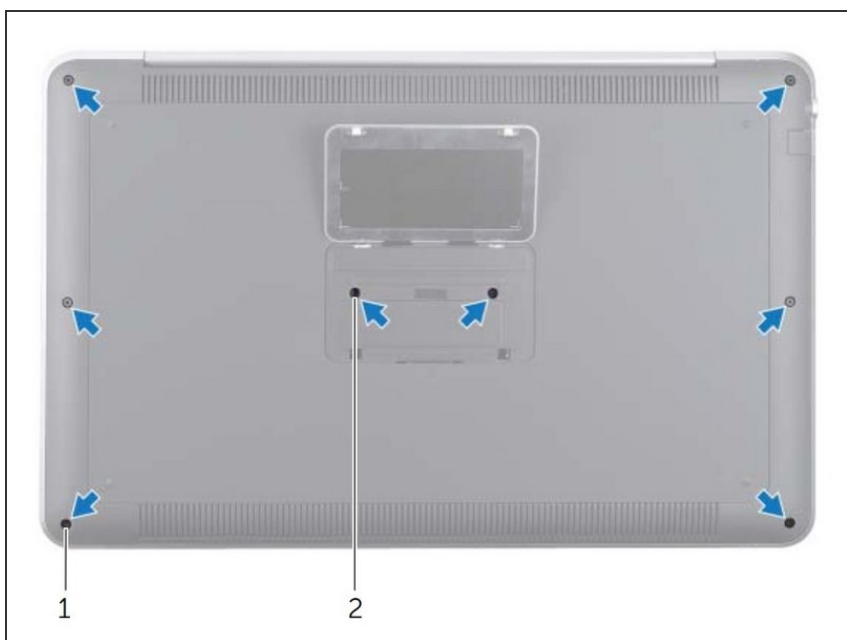
- [T5 Torx Screwdriver](#) (1)
  - [Spudger](#) (1)
  - [Phillips #0 Screwdriver](#) (1)
-

## Step 1 — Turning Off the Computer, and Opening the System Badge



- After turning off the computer, turn over the laptop and lift up the system badge (#2).

## Step 2 — Unscrewing the Base Cover



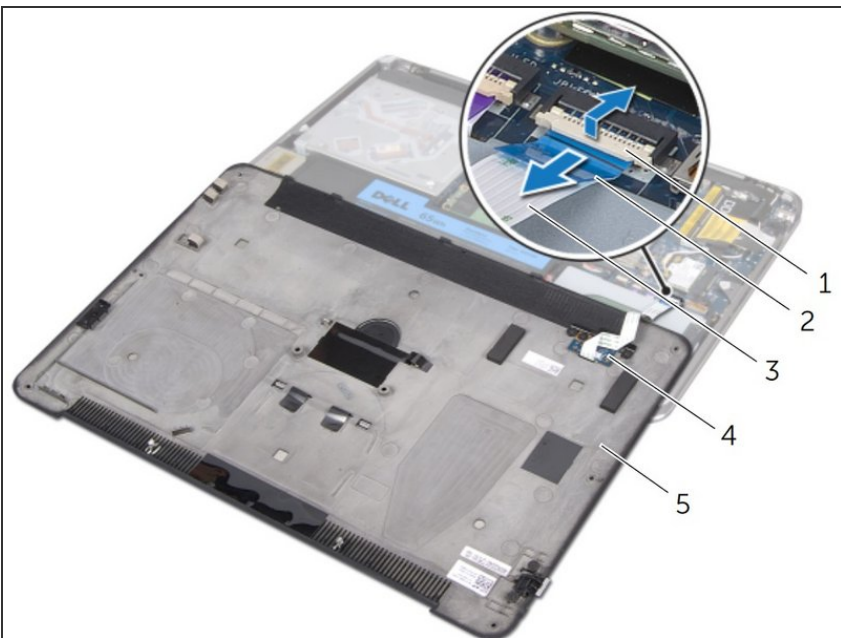
- Unscrew the six Torx screws (#1) along the base cover's edge and the two Philips screws (#2) under the system badge.

### Step 3 — Pry Off Base Cover



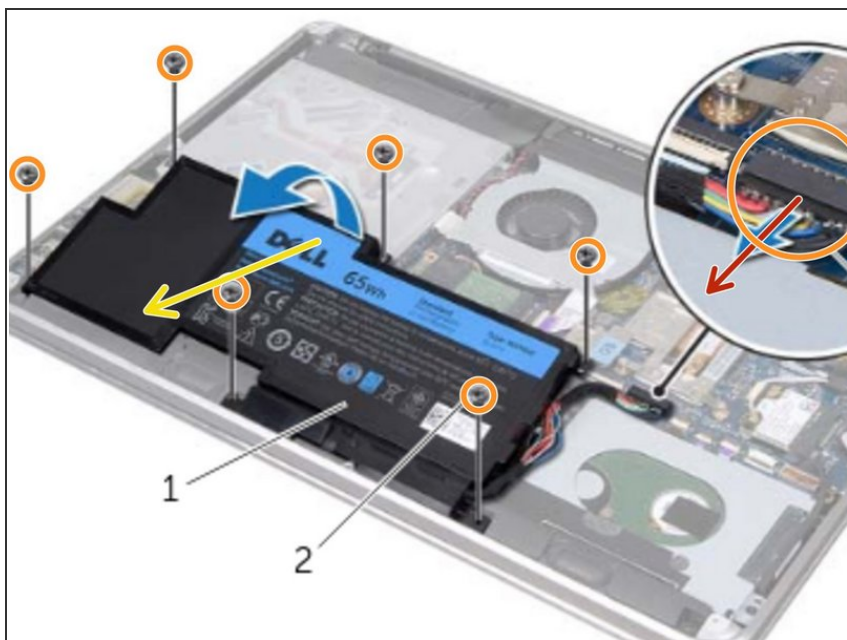
- Snap the system badge back into place so that it can be removed along with the base cover.
- Using the spudger (or some other prying tool), pry the base cover away from the rest of the system.

### Step 4 — Battery Indicator Cable Removal



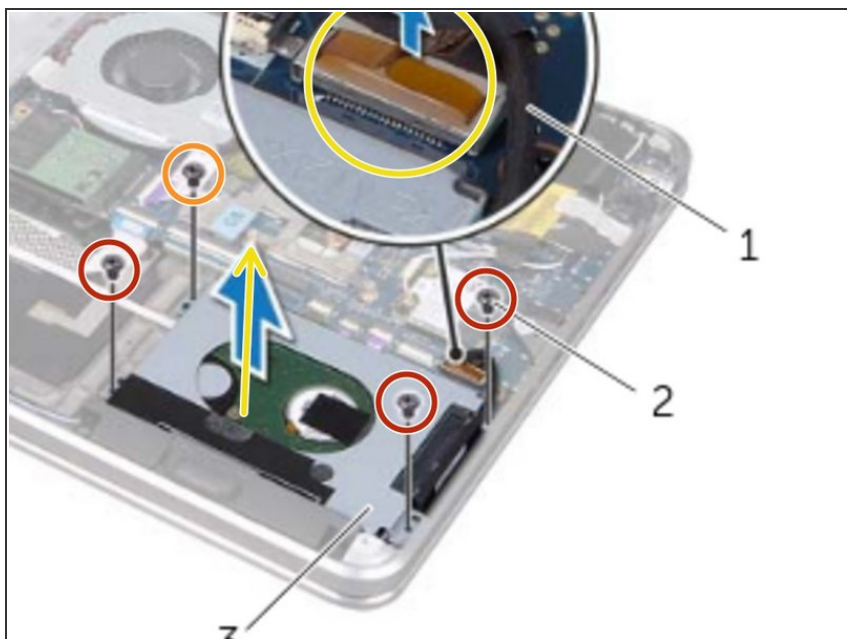
- Remove the battery indicator cable (#3) from the white connector by lifting up the connector latch (#1) pulling on the tab (#2).
- Even if you do not plan on replacing the base cover entirely, decoupling this fragile cable will ensure that it doesn't get damaged if the base cover is moved for whatever reason.

## Step 5 — Remove Battery



- Disconnect the battery cable from the system board.
- Remove the screws that secure the battery to the palm-rest assembly.
- Lift the battery off the palm-rest assembly.
- Turn the computer over and open the display as far as possible.
- Hold the power button for about 5 seconds, so that the system becomes grounded.

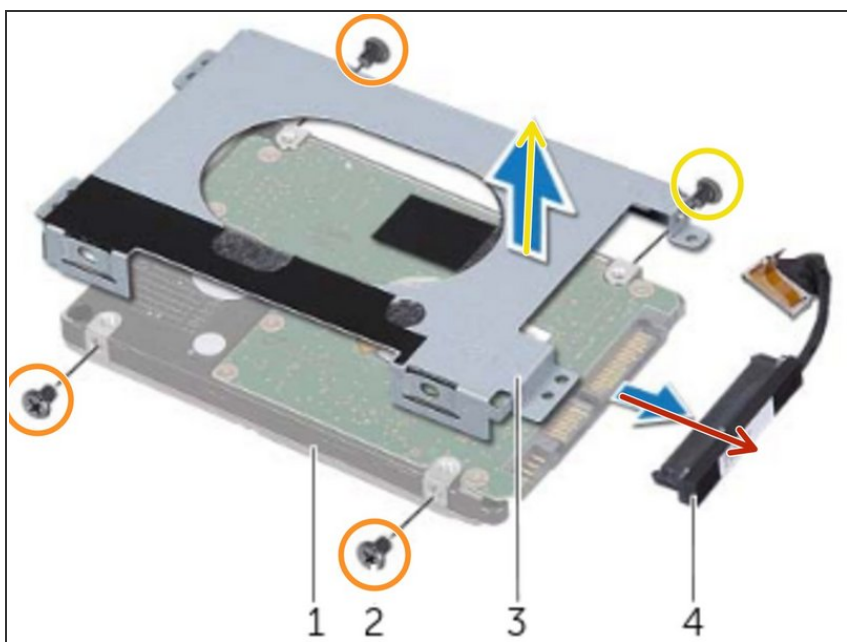
## Step 6 — Hard Drive



- ⚠ CAUTION: To avoid data loss, do not remove the hard drive while the computer is On or in Sleep state.
- ⚠ CAUTION: Hard drives are extremely fragile. Exercise care when handling the hard drive.
- Remove the screws that secure the hard-drive assembly to the palm-rest assembly.
- Disconnect the hard-drive cable from the system board.
- Lift the hard-drive assembly off the palm-rest assembly.



## Step 7



- Disconnect the interposer from the hard-drive assembly.
- Remove the screws that secure the hard-drive bracket to the hard drive.
- Lift the hard-drive bracket off the hard drive.

To reassemble your device, follow these instructions in reverse order.