



# Dell XPS 17 L702X Display Replacement

Replace the Display for Dell XPS 17 L702X.

Written By: Monica Oropeza



---

# INTRODUCTION

Replace the Display for Dell XPS 17 L702X. This guide includes instructions for removing the WWAN and WLAN cards.



## TOOLS:

- [Spudger](#) (1)
  - [iFixit Opening Tools](#) (1)
  - [Phillips #1 Screwdriver](#) (1)
-

## Step 1 — Battery



- Flip over the laptop so that the bottom battery compartment faces upwards.

## Step 2



- Slide the tab below the battery to the left and hold the tab in place.



## Step 3




- While holding the tab, lift the battery out of its compartment.
- Release the tab after removing the battery.

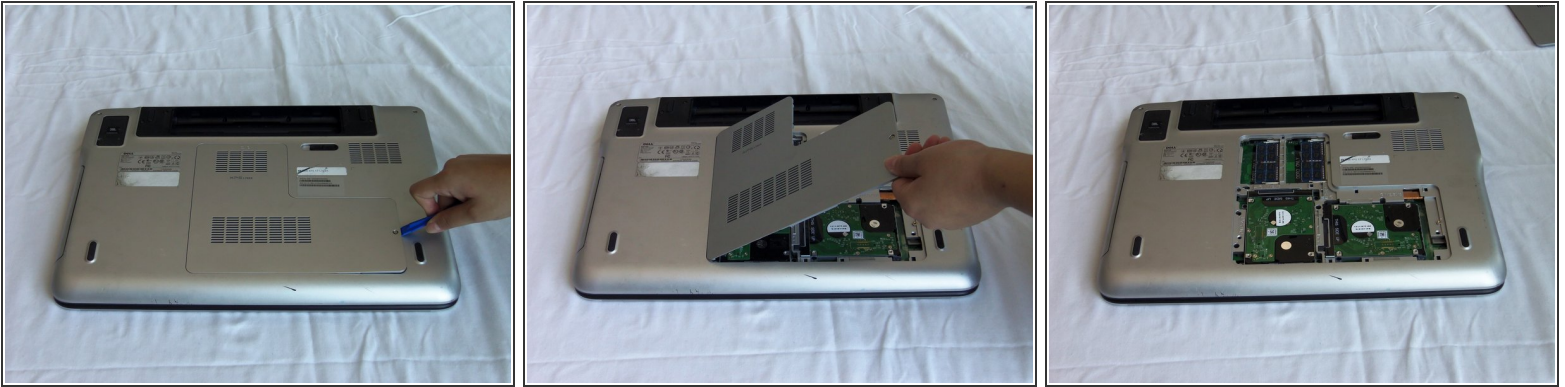
## Step 4 — Hard Drive



- Loosen the module cover screw with a Phillips screwdriver.

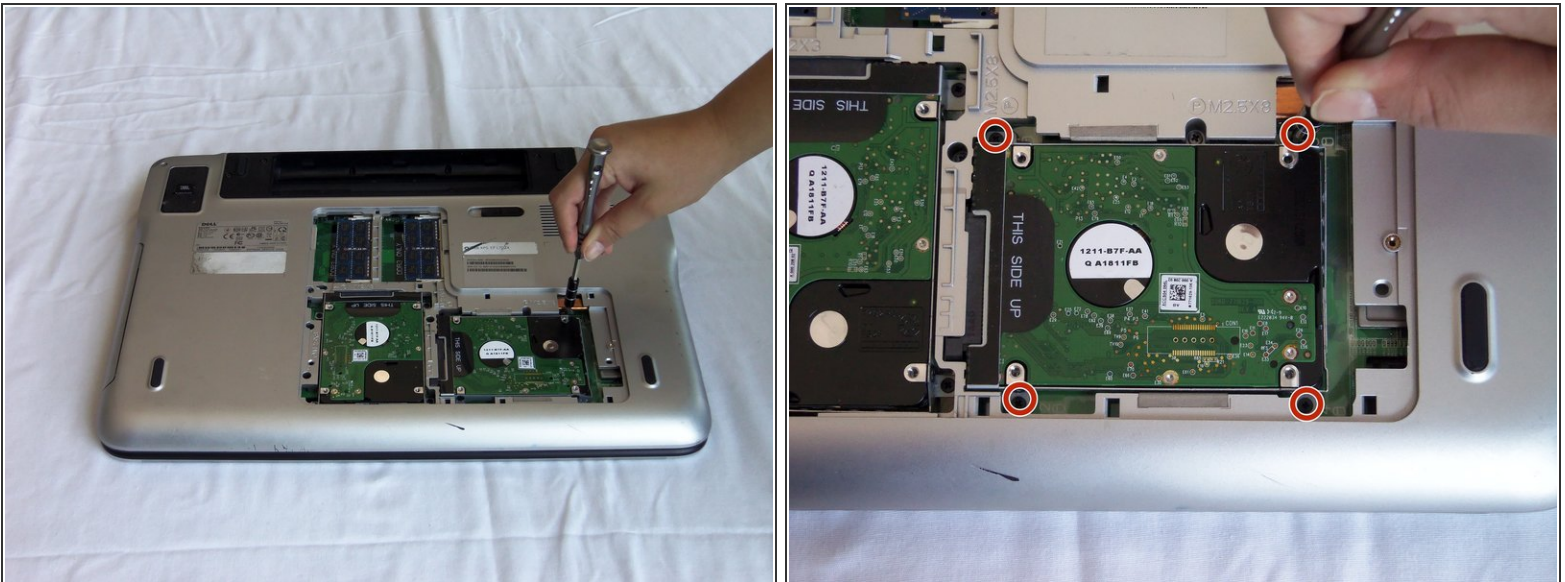
 The screw is attached to the cover; do not force it out.

## Step 5



- Lift the module cover by inserting a plastic opening tool into the crevice near the screw and lift upwards.

## Step 6



- Remove the four 4mm Phillips screws fastening the first hard drive.



## Step 7



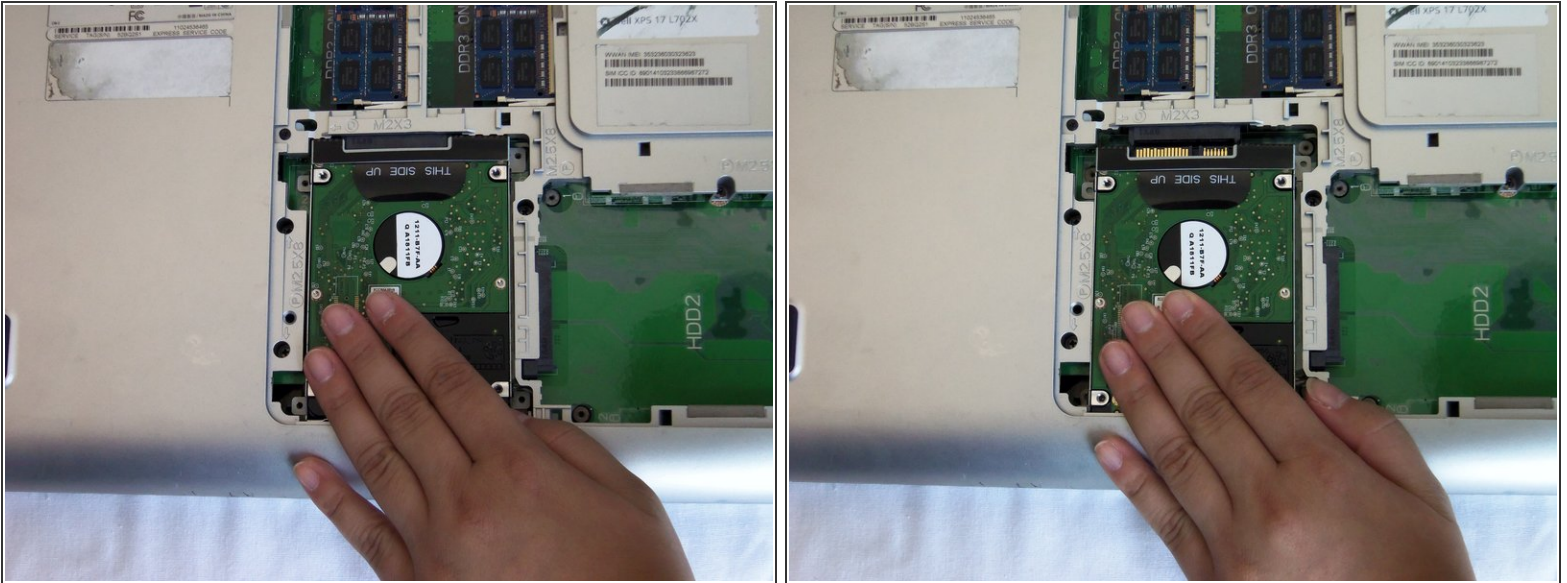
- Slide the hard drive with your hand towards the hole where the back panel assembly screw was located (in step 5) to disconnect it.
- Lift the hard drive up to remove it from the case.

## Step 8



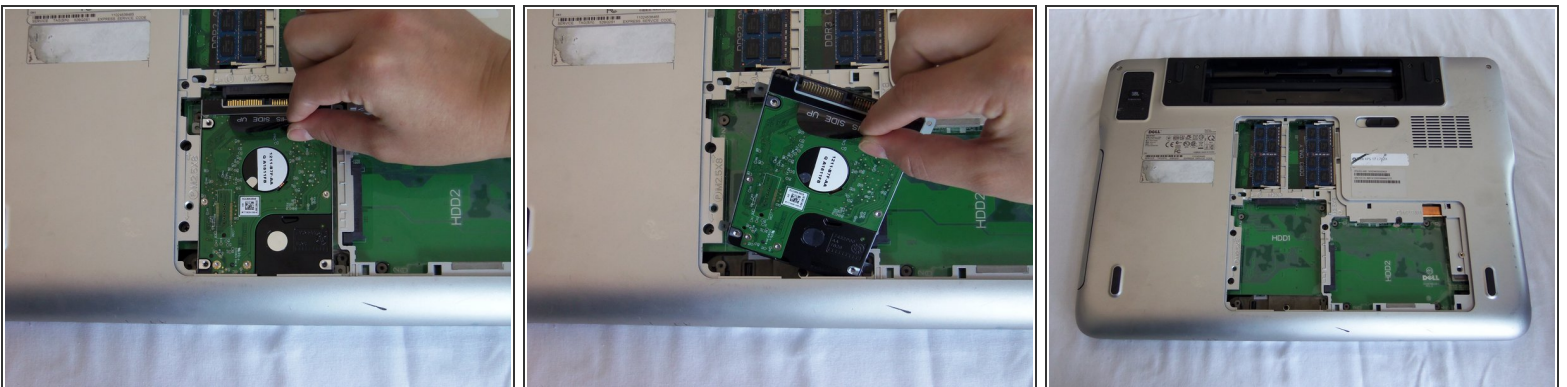
- Remove the four 4mm Phillips screws on the second hard drive.

## Step 9



- Slide the hard drive towards the edge nearest you to disconnect it.

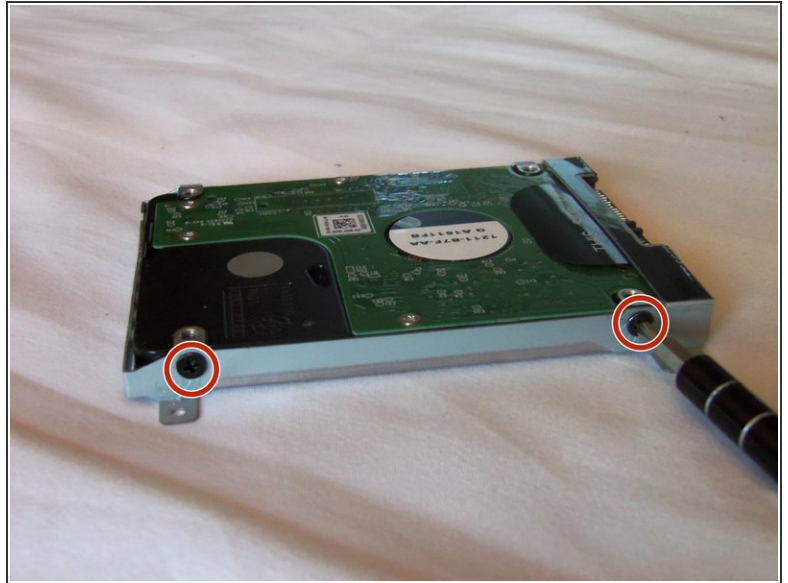
## Step 10




- Using the tab that says "THIS SIDE UP," pull away from the laptop to remove the hard drive.



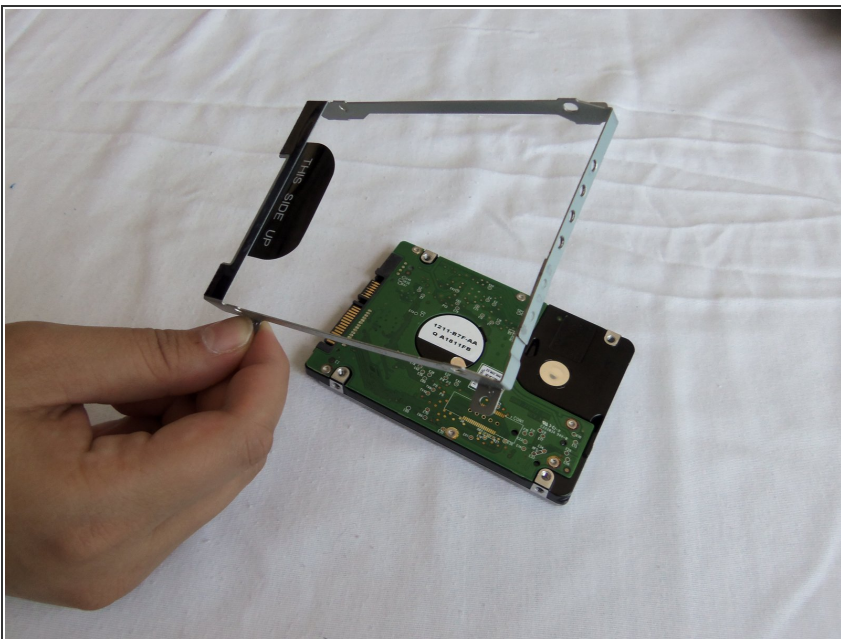
## Step 11



 Repeat this step for each hard drive.

- Unscrew the two 4mm screws from each side of the hard drive casing with a Phillips screwdriver.

## Step 12



- Remove the hard drive casing.



## Step 13 — Palm Rest



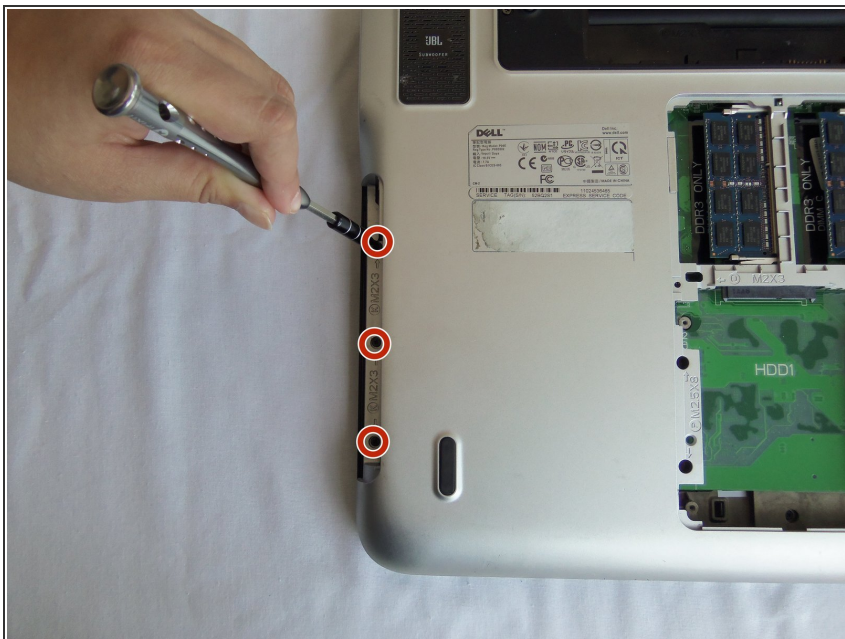
- Unscrew the screw holding the optical drive with a Phillips screwdriver.

## Step 14



- Using a plastic opening tool, pull out the optical drive.

## Step 15



- Unscrew three 4mm screws near the edge of the optical drive compartment with a Phillips screwdriver.

## Step 16



- Open the laptop to about a 90 degree angle and place it on its side with the empty optical drive slot pointing upwards.



## Step 17



- Push and hold the tab inside the optical drive's opening with your index finger.
- Insert a spudger between the black and silver plastic pieces that are above the tab and pry apart the two pieces.

## Step 18



- Slide the spudger around the palm rest to release the clips.
- ⓘ You may hear a crackling noise; this is normal.
- ⚠ Use caution when sliding below the mouse pad, as there are wires we must detach in the next steps.

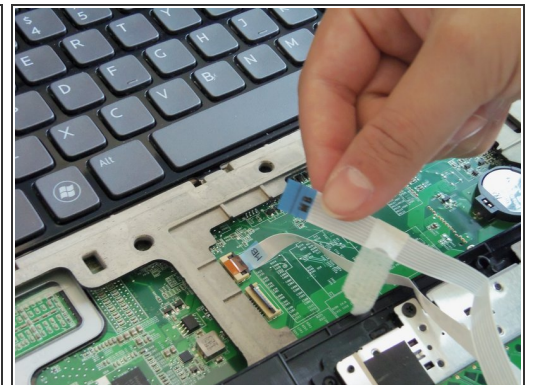
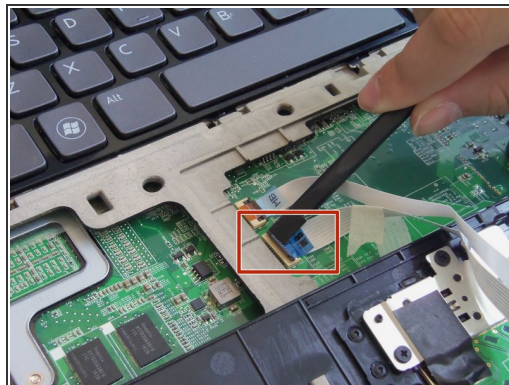
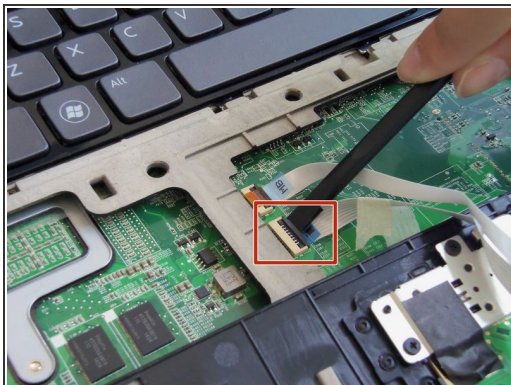
## Step 19



- Gently lift and rotate the palm rest panel until it's upside down as it is still connected by the mouse pad wires.

⚠ The mouse pad wires are still connected to the palm rest panel.

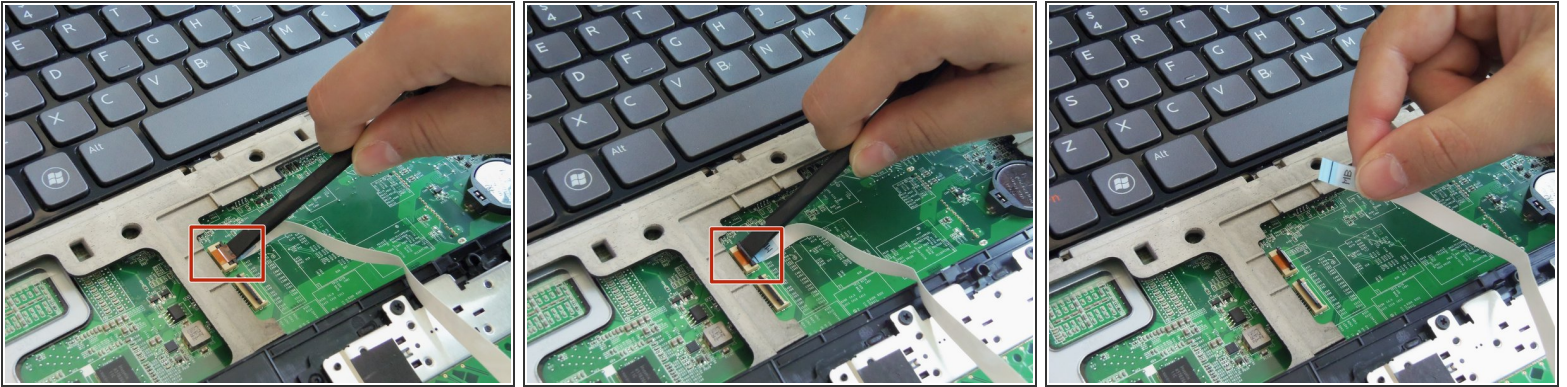
## Step 20



- Put the spudger below the black tab of the wider cable and push up to release.
- Gently pull out the cable.



## Step 21



- Insert the spudger below the black tab of the remaining cable and push up to release.
- Gently pull out the cable.

## Step 22



- Remove the palm rest from the laptop.

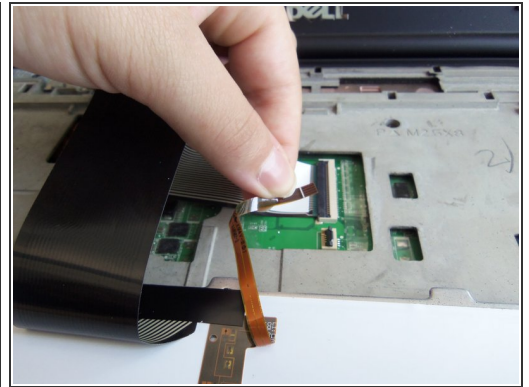
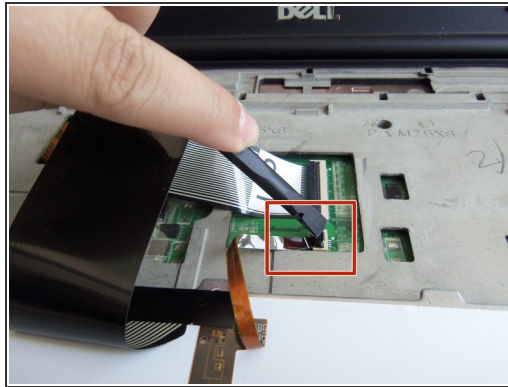
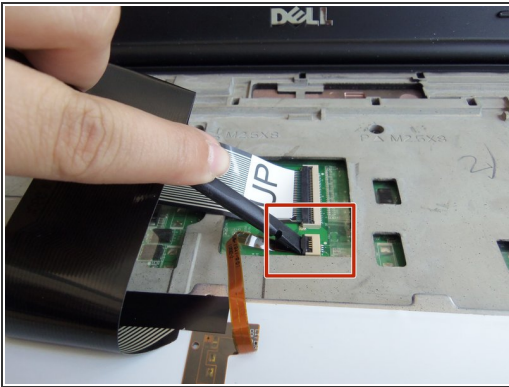
## Step 23 — Keyboard



- Using the plastic opening tool, slightly lift and rotate the keyboard until it's upside down from the display side of the laptop.

⚠ DO NOT lift the keyboard all the way up as there are wires that are still connected.

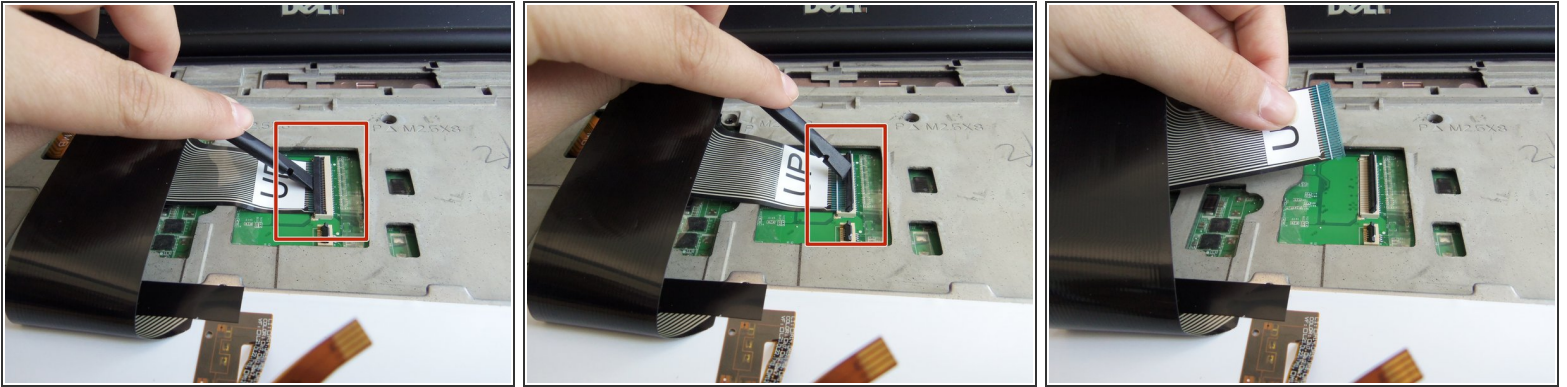
## Step 24



- Gently insert the spudger below the edge of the black tab of the thin, copper colored cable and pry it open.
- Gently pull out the cable.



## Step 25



- Gently insert the spudger under the edge of the black tab of the cable marked "UP" and pry it open.
- Gently pull out the cable.

## Step 26



- Remove the keyboard from the laptop.

## Step 27 — Display



- Close the display, and flip the laptop over so that the bottom faces upwards.
- Remove the two 16 mm screws with a Phillips screwdriver.

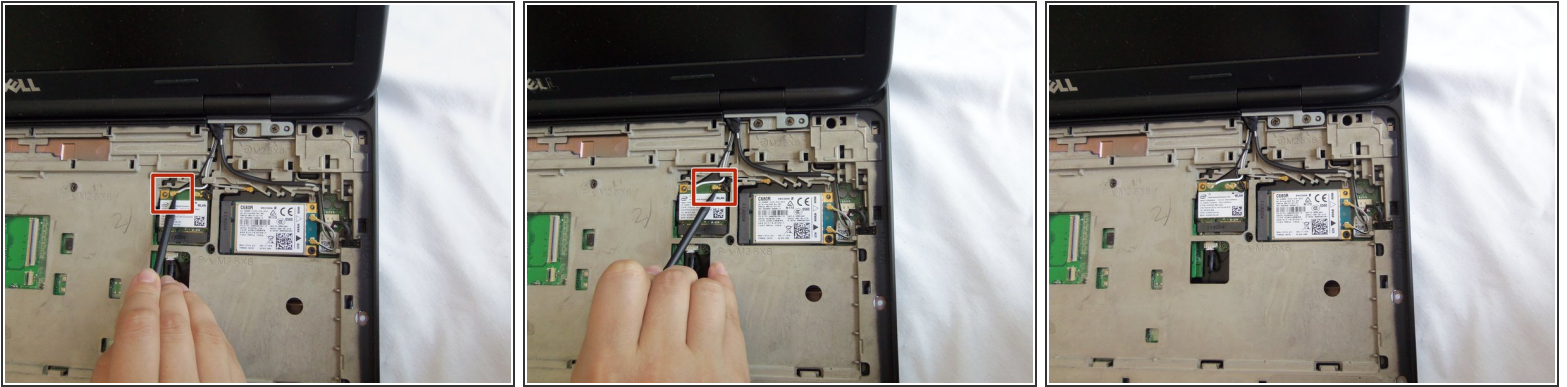
## Step 28



- Gently flip over the laptop and open the back cover assembly.

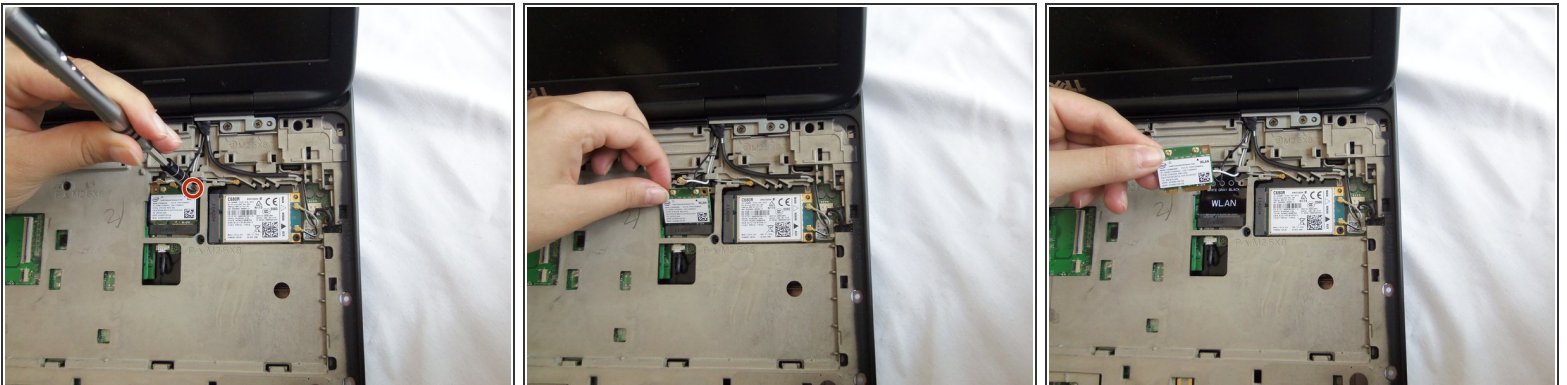


## Step 29



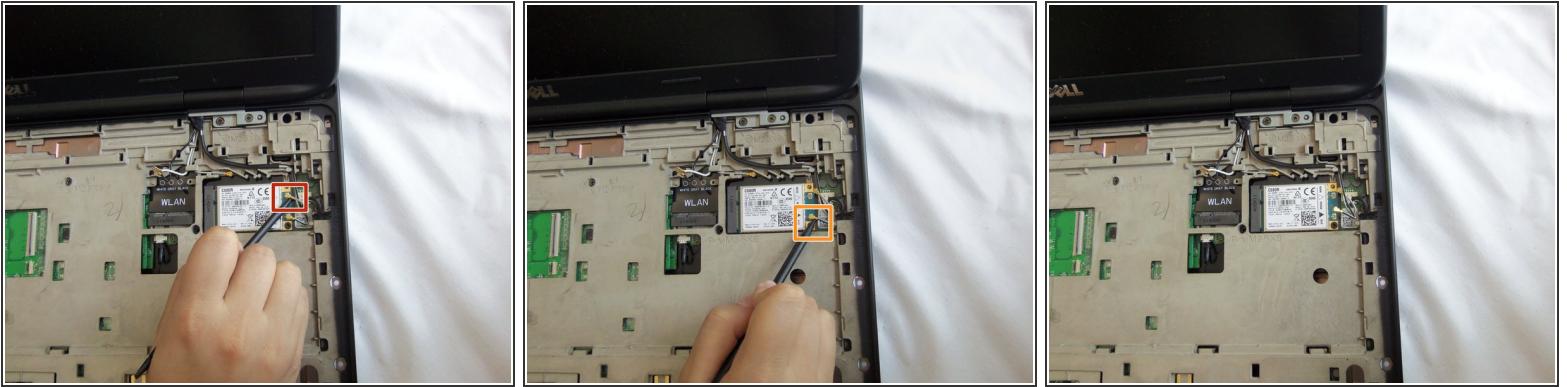
- Insert the pointy side of the spudger below the golden connector of the white cable on the WLAN card and lift to detach.

## Step 30



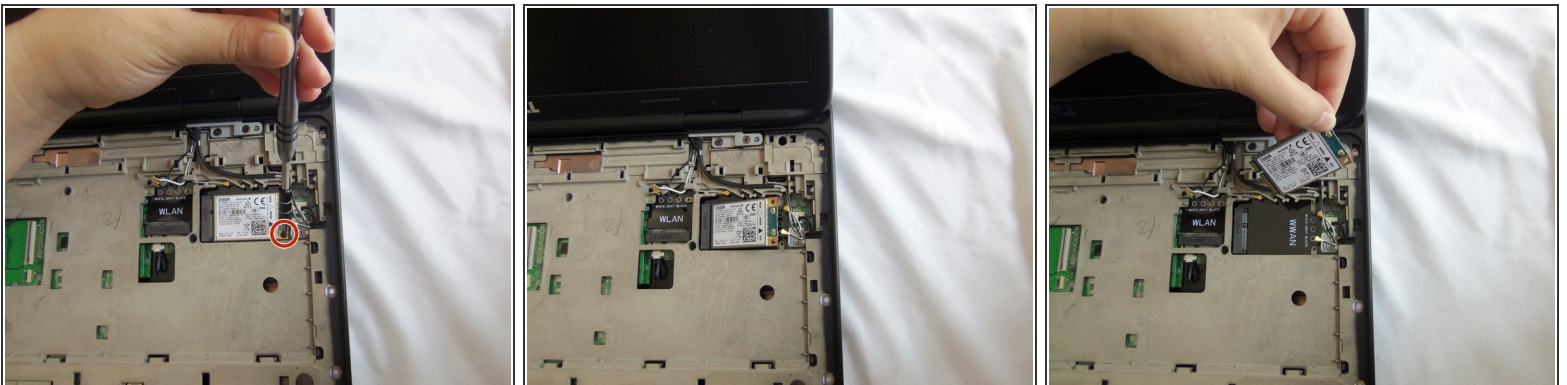
- Unscrew the 4mm screw from the WLAN card with a Phillips screwdriver. The card will lift itself after you remove the 4mm screw.
- Gently pull out the WLAN card.

## Step 31



- Insert the pointy side of the spudger below the golden color connector of the gray cable on the WWAN card and lift to detach.
- Insert the pointy side of the spudger below the golden color connector of the black cable on the WWAN card and lift to detach.

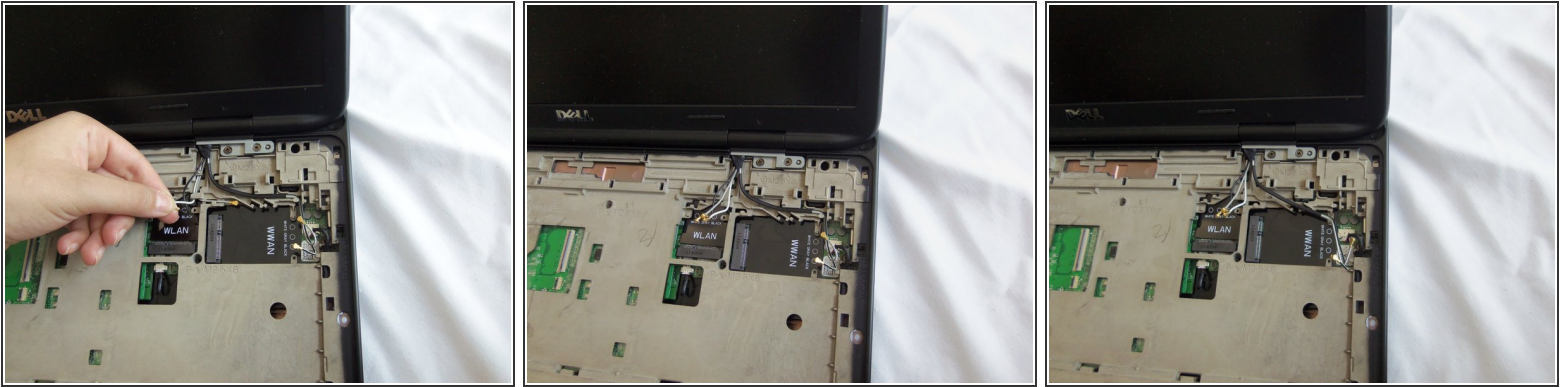
## Step 32



- Unscrew the 4mm screw from the WWAN card with a Phillips screwdriver. The card will lift itself.
- Gently pull out the WWAN card.



## Step 33



- Gently remove the wires for the WLAN and WWAN cards from their housing.

## Step 34



- Unscrew four the 8mm screws directly under the keyboard with a Phillips screwdriver.

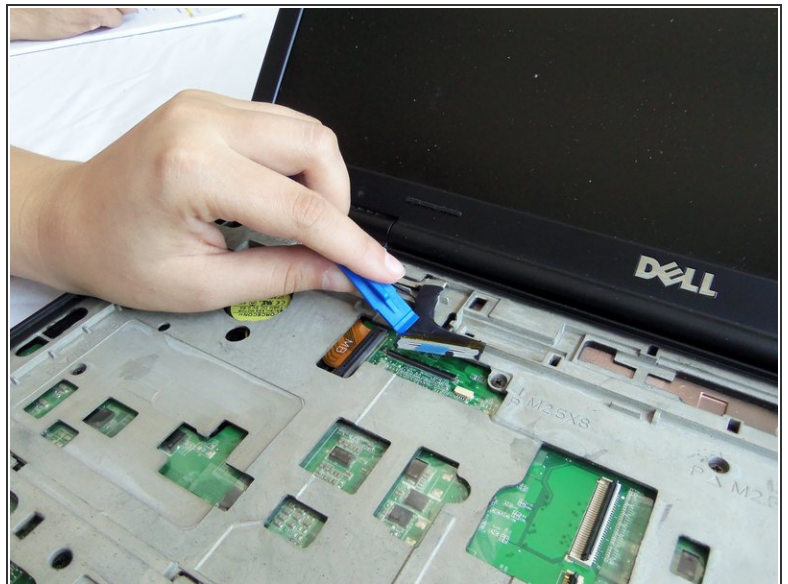
## Step 35



- Loosen the grounding screw attached to the black monitor cable with a Phillips screwdriver.

⚠ DO NOT ATTEMPT TO REMOVE THE SCREW FROM THE WIRE. The screw is permanently fixed onto the wire.

## Step 36



- Using the plastic opening tool, detach the connection from the cable to the board.



## Step 37



- Gently remove the monitor cable from its holdings from the board.

## Step 38



- Hold the plastic edge of the display firmly and lift to remove the display.

To reassemble your device, follow these instructions in reverse order.