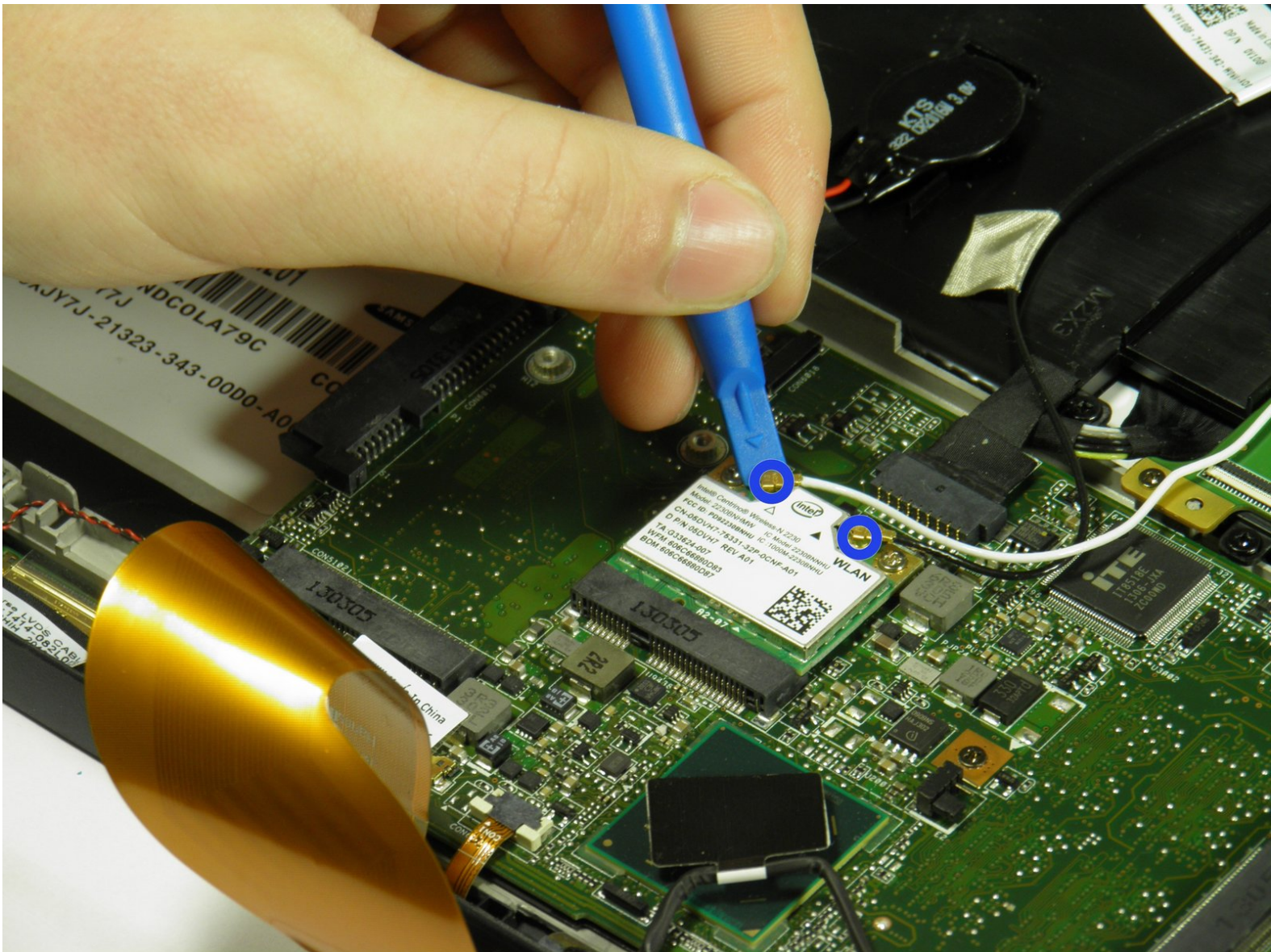




# Dell XPS 18 Wireless WLAN Card WIRES

Prerequisite

Written By: Austin Weir



---

## INTRODUCTION

This guide shows how to detach the wireless WLAN card wires. This is not a replacement guide for the wires or the card.



### TOOLS:

- [Phillips #00 Screwdriver](#) (1)
  - [iFixit Opening Tools](#) (1)
  - [T9 Torx Screwdriver](#) (1)
-

## Step 1 — Back Cover



- Turn the device on its screen.
- Remove the ten 4mm screws using a T8 Torx screwdriver.

## Step 2



- Gently flip out support feet located near the bottom of device.

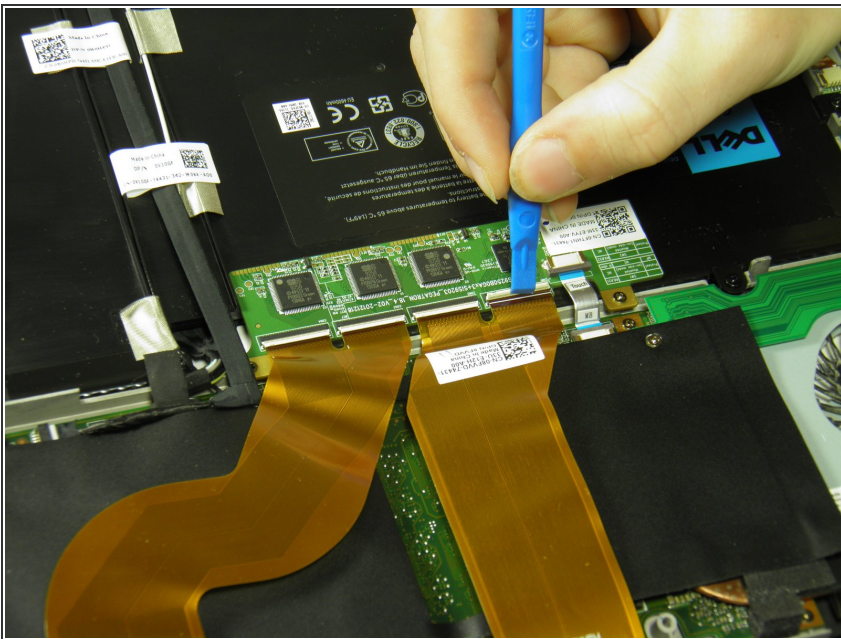


## Step 3



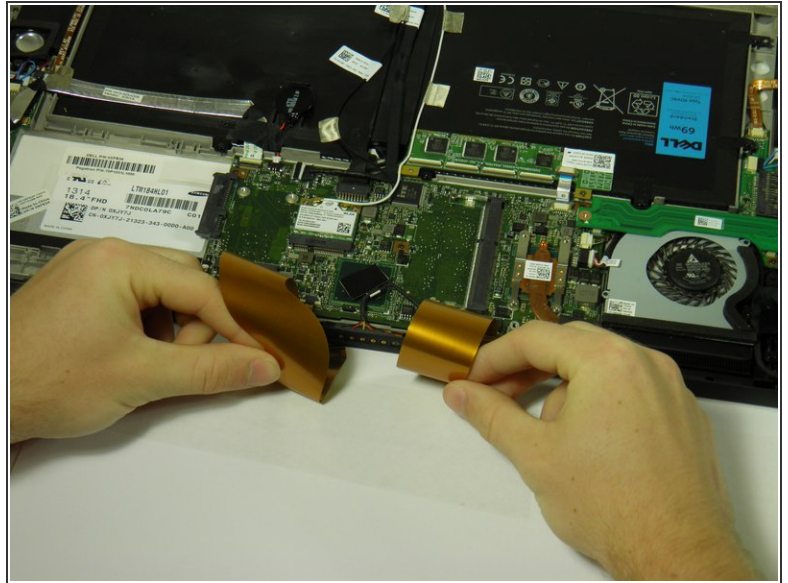
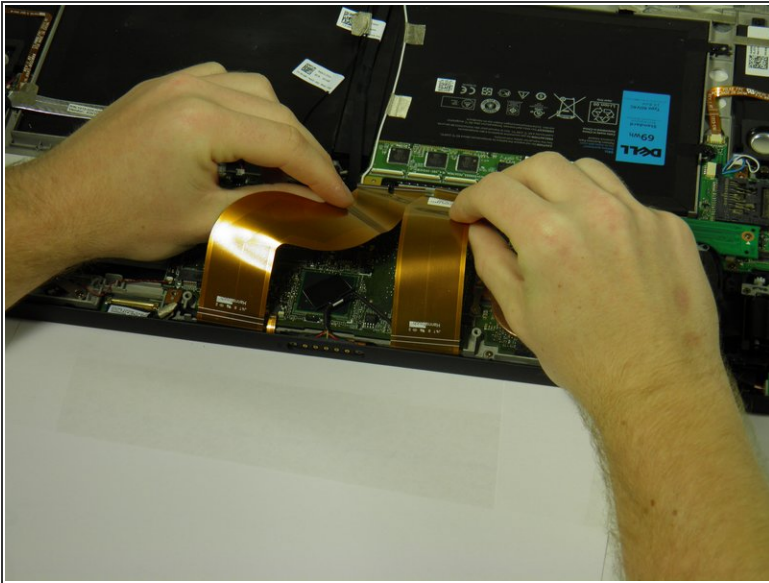
- Gently lift the back cover off the device. The back cover should come off easily.

## Step 4 — Internal Cover



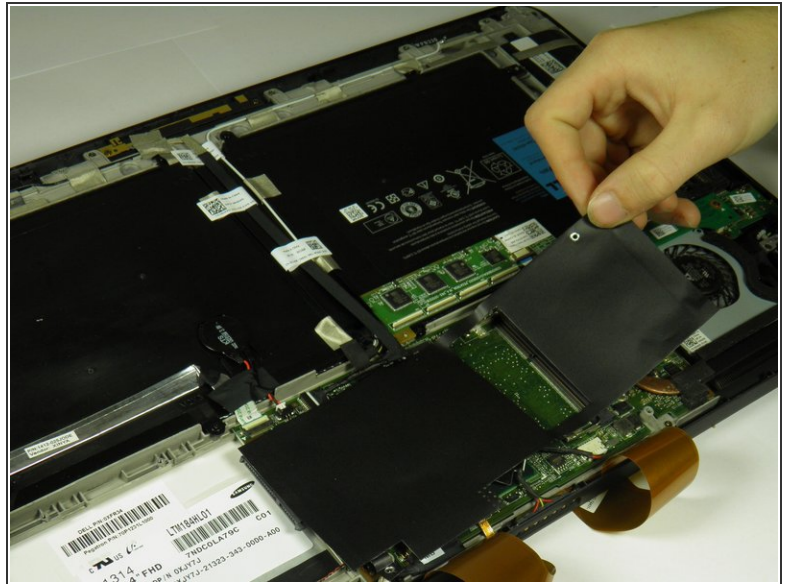
- Use the opening tool's angled edge to lift the clasps securing the screen and motherboard cables.

## Step 5



- Disconnect the screen and copper colored motherboard cables and tuck them under the device to prevent future hassle.

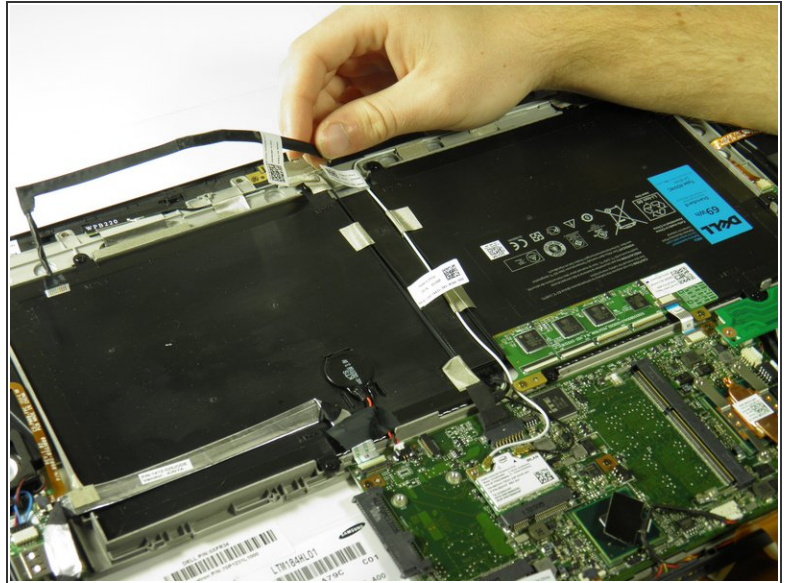
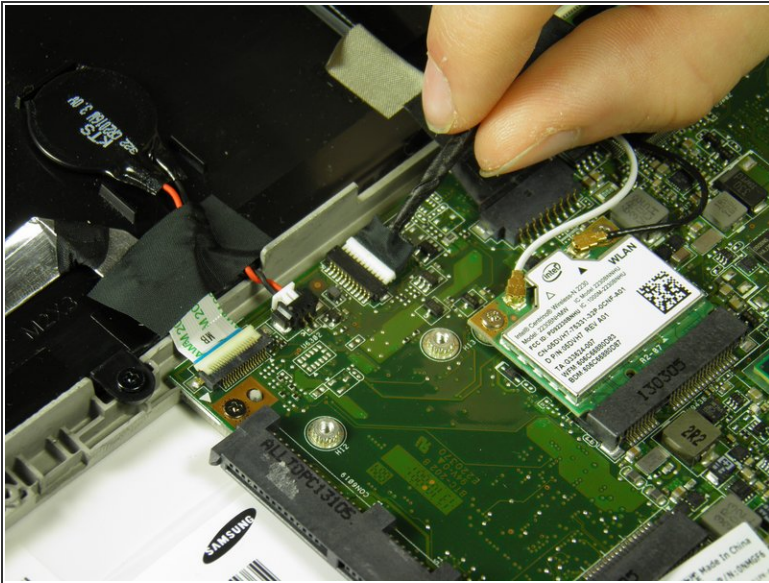
## Step 6



- Remove the two black 3mm screws from the internal cover with a Phillips 00 screwdriver.
- Remove the internal cover.

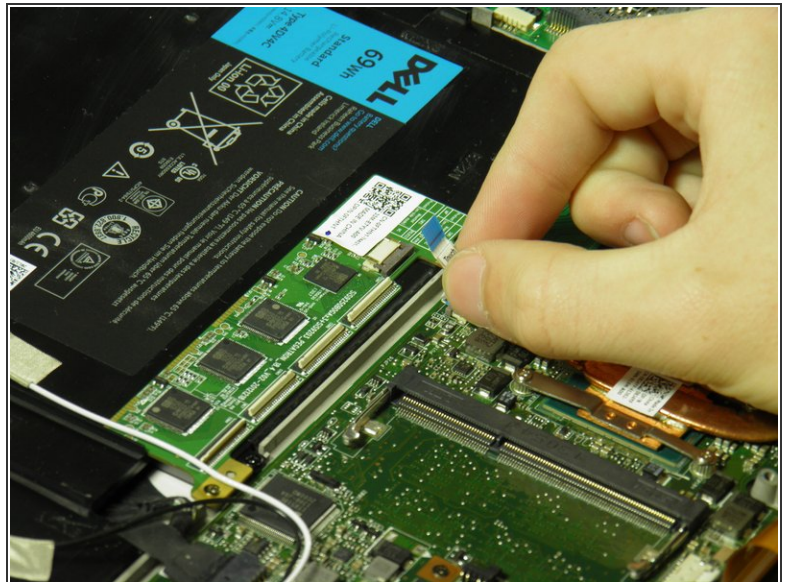
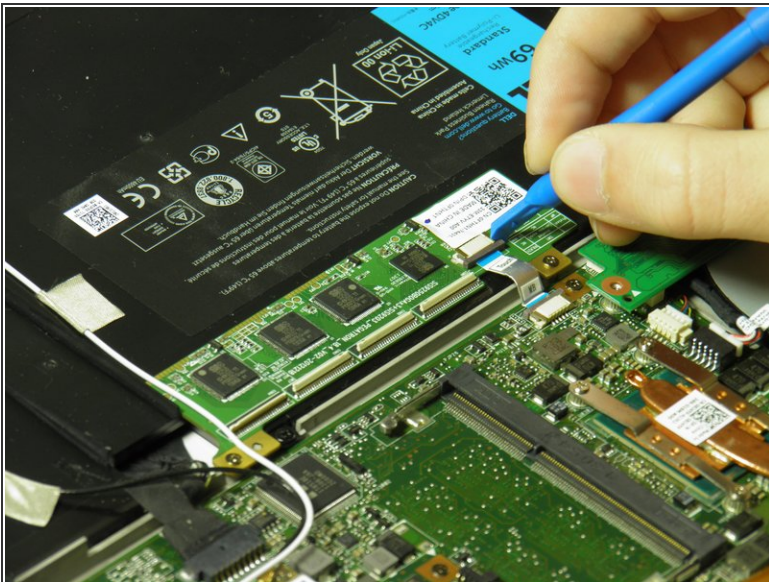


## Step 7 — Touch Control Board



- Disconnect the black camera cable and pull it back to prevent future hassle.

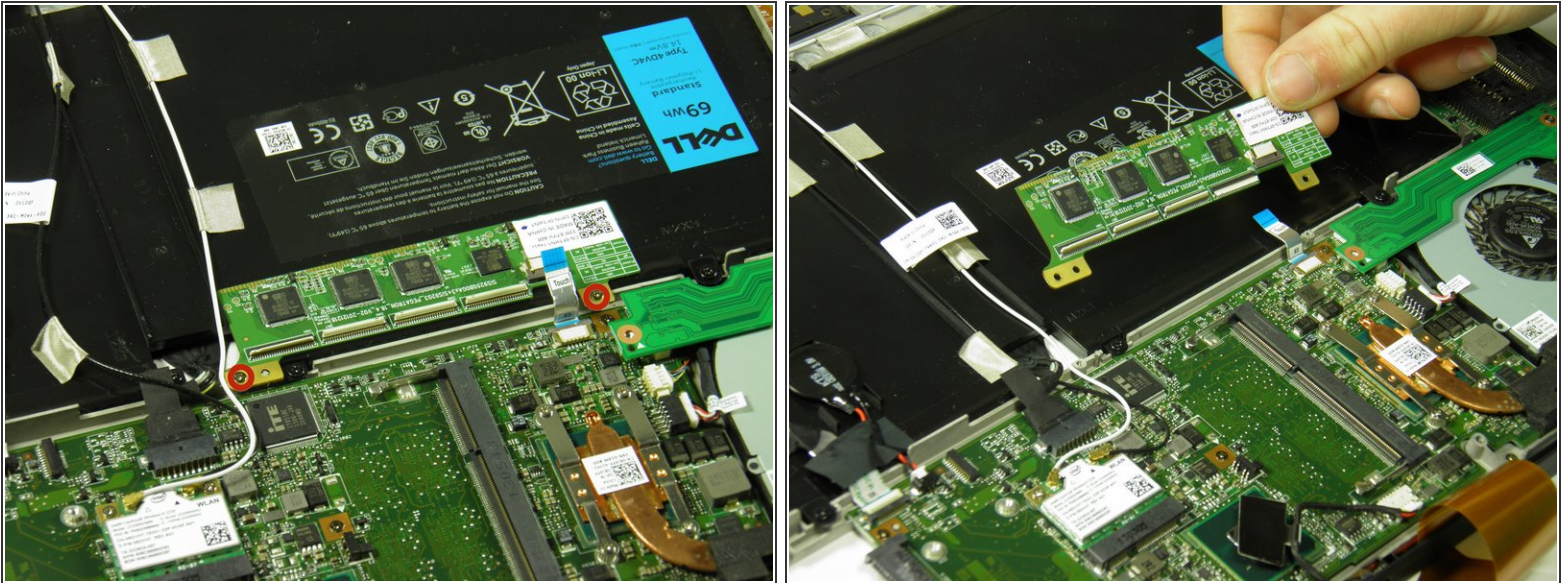
## Step 8



- Use the angled edge of the plastic opening tool to lift the clasp securing the touch control board cable.
- Disconnect the silver and blue touch control board cable.

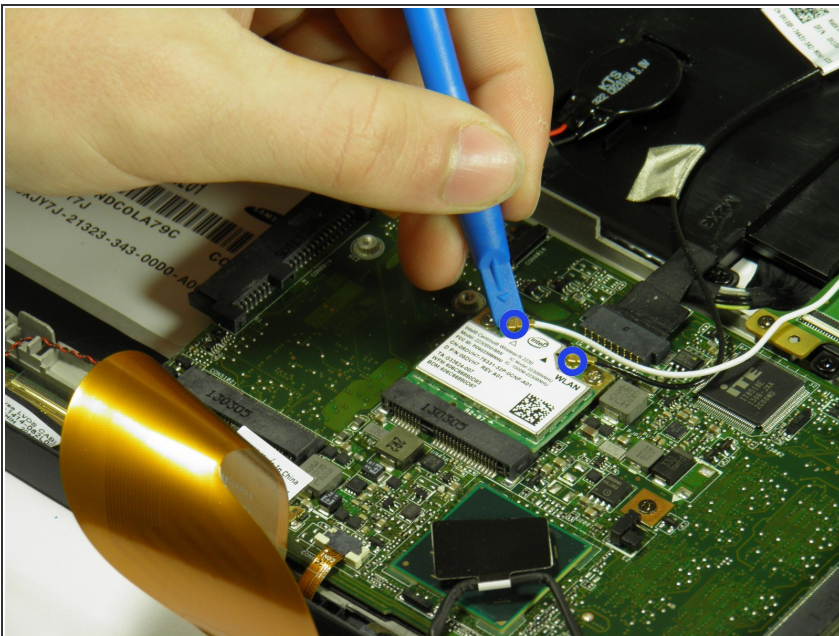


## Step 9



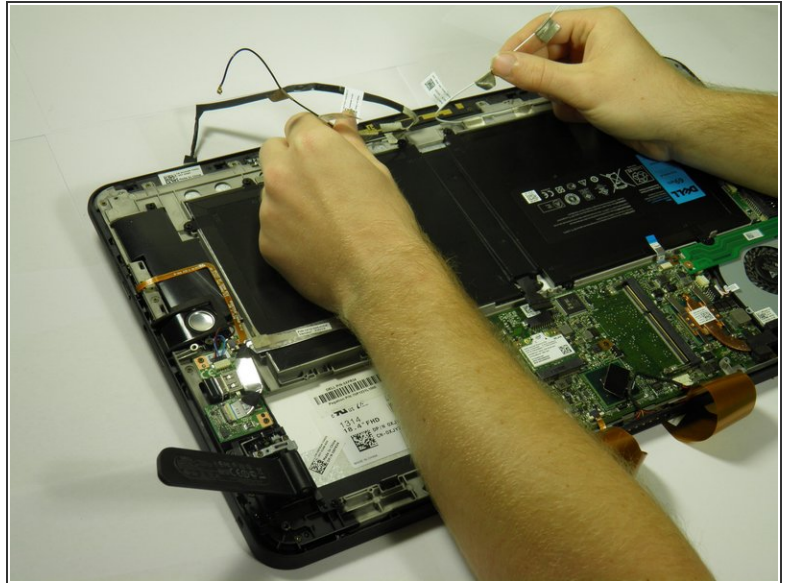
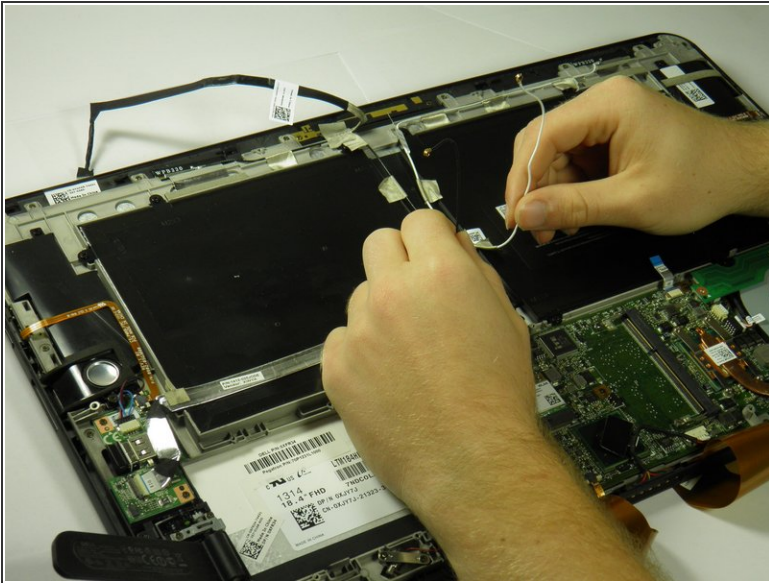
- Remove the two silver 3mm screws holding the touch control board in place with a Phillips 00 screwdriver.
- Remove the touch control board.

## Step 10 — Wireless WLAN Card Wires



- Use the plastic opening tool's angled edge to remove the black and white wires connected to the wireless WLAN card.

## Step 11



- Pull back the cables.

To reassemble your device, follow these instructions in reverse order.