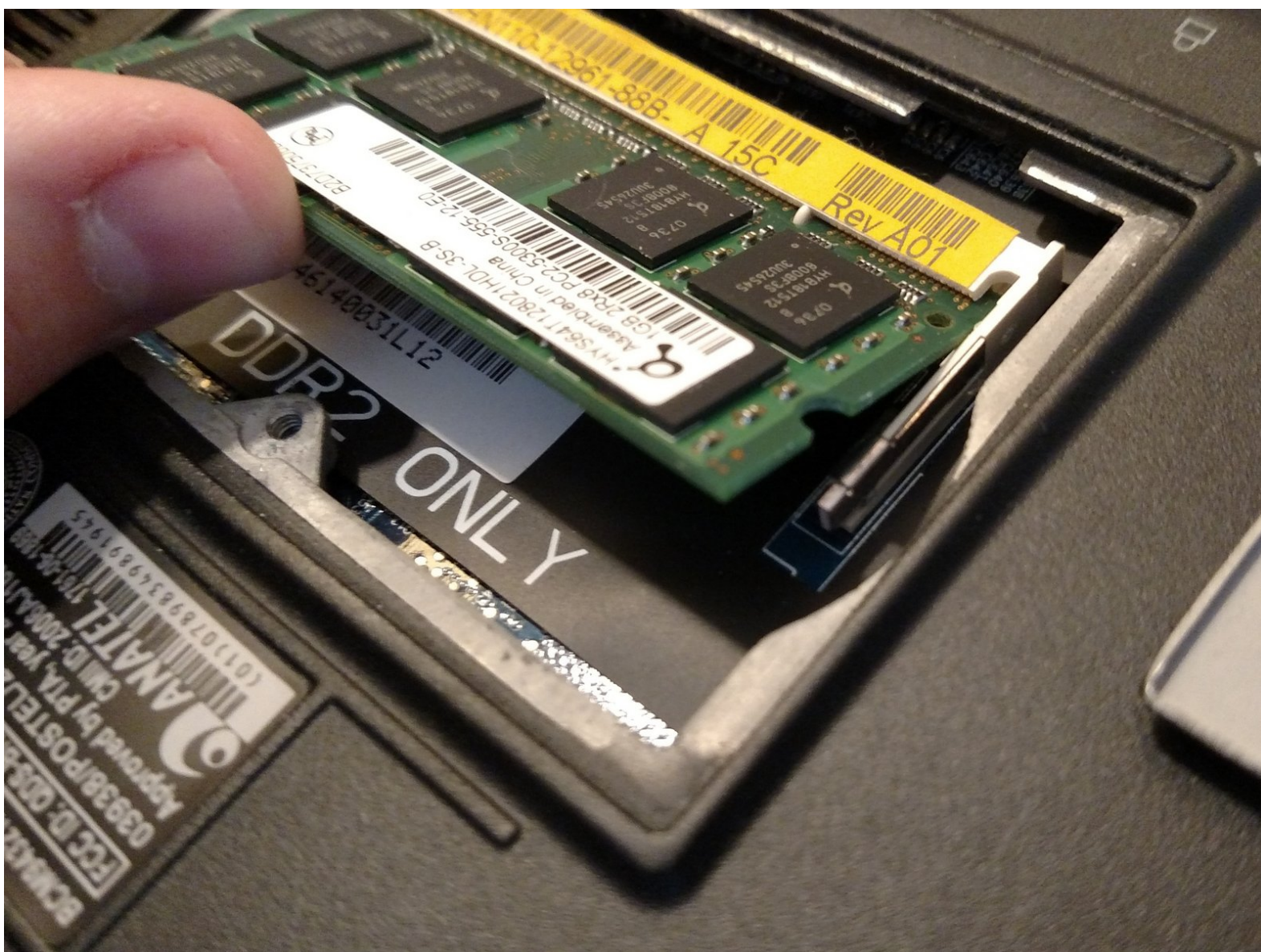




Dell XPS M1210 RAM Replacement

This guide will assist you with replacing your RAM memory. This guide can also help with how to upgrade your Dell XPS M1210, for more memory.

Written By: Dave



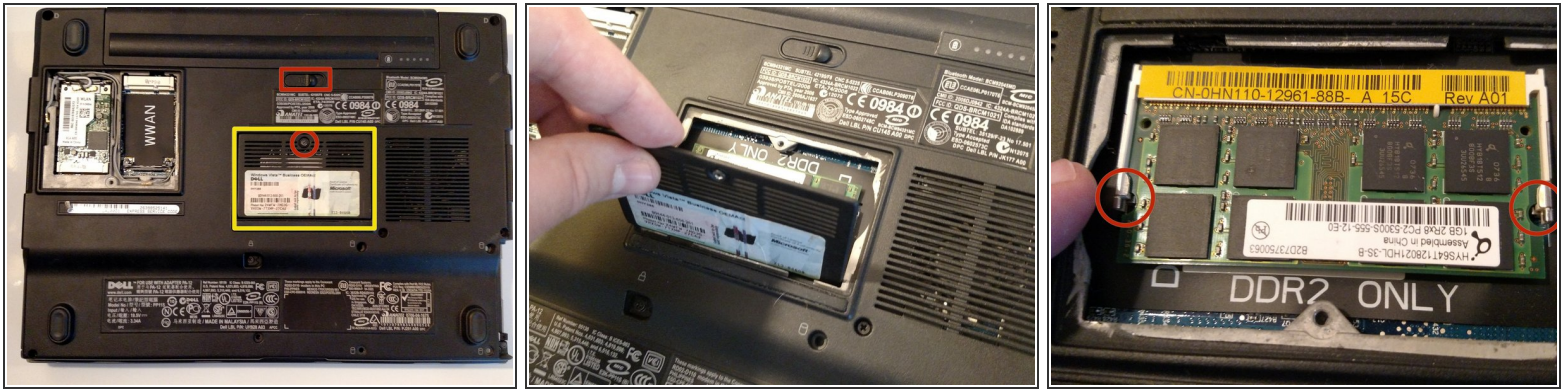
INTRODUCTION

The laptop has two memory module slots ...one on the bottom-side of the computer, and one accessed from the top-side of the computer (behind the keyboard). Each slot supports up to 2 GB, and the type of memory required is SO-DIMM, DDR2. Supported memory sizes include 256 MB, 512 MB, 1GB, and 2 GB for each slot. With 2 GB on top and 2 GB on the bottom slot, you can get up to 4 GB if want to upgrade the lower amount of existing memory, to a higher amount.

TOOLS:

- [Flathead Screwdriver](#) (1)
 - [Phillips #2 Screwdriver](#) (1)
-

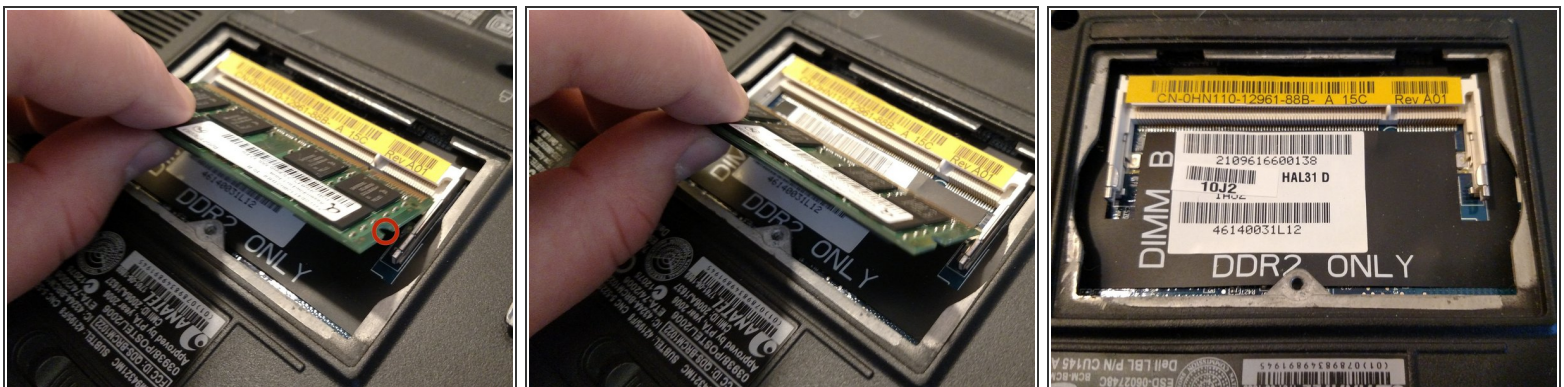
Step 1 — RAM



● Steps for Bottom-Side Memory Slot

- Turn off the computer, unplug the power adapter. Remove the battery, after sliding the battery latch, until you hear a click.
- Remove 1 star screw, so you can remove memory cover. Using your fingertips, spread apart the clips, which secure the memory module in place.

Step 2

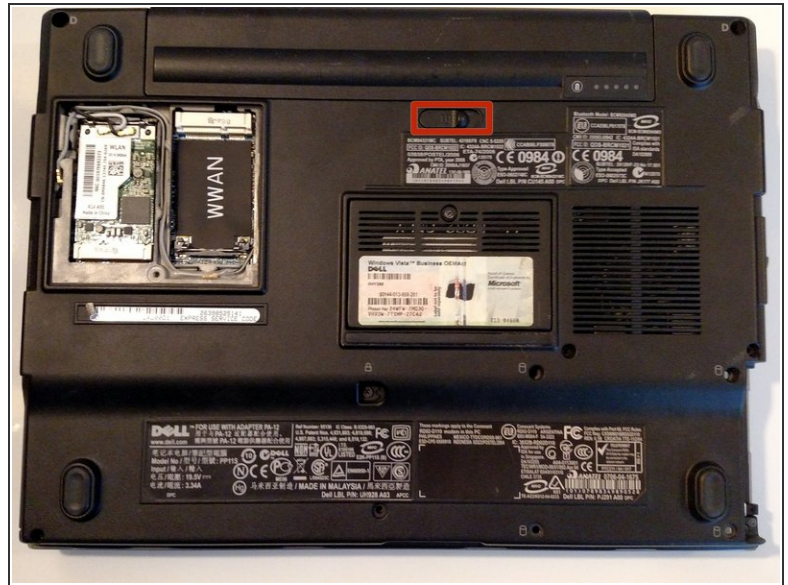


● Steps for Bottom-Side Memory Slot

- Once unsecured, the memory module will pop up, so you can remove it at a 45-degree angle.
- When installing the new memory module, you will notice it can only be inserted in one direction, due to the memory module indents.
- Secure the module with the clips, click it into place, and reinstall the memory module cover in reverse order of the above instructions.

This document was generated on 2019-09-25 09:04:30 AM (MST).

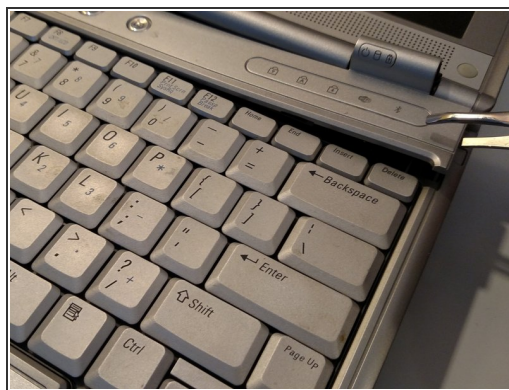
Step 3



- **Steps for Top-Side Memory Slot**

- Turn off the computer, unplug the power adapter.
- Remove the battery, after sliding the battery latch, until you hear a click.

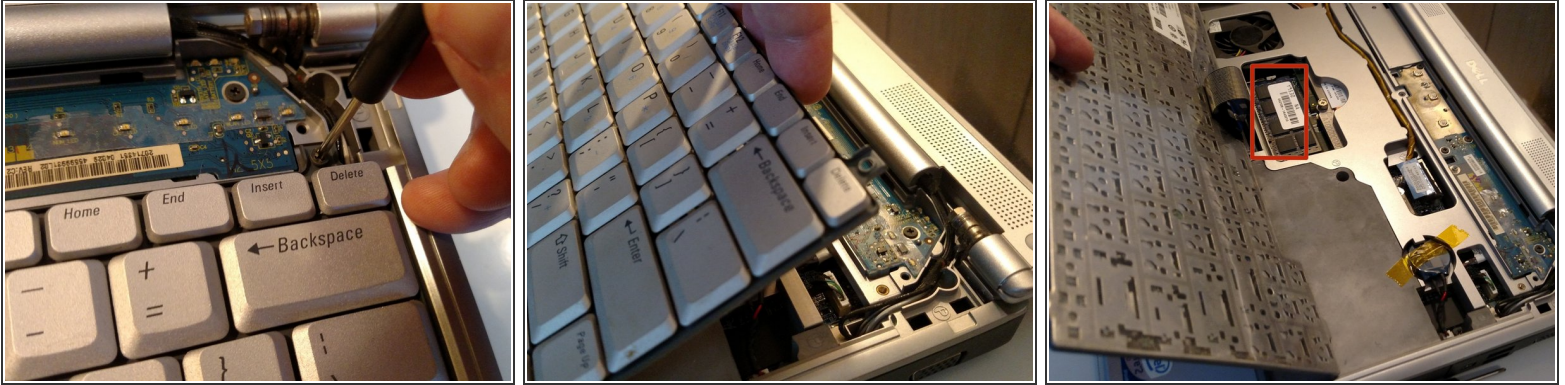
Step 4



- **Steps for Top-Side Memory Slot**

- With the laptop screen tilted 180-degrees, you can begin removing the rear hinge panel. The cover is not attached to any wires and covers the screws which secure the keyboard in place.
- With the flat-head screwdriver or a thin object, pry up the hinge panel.

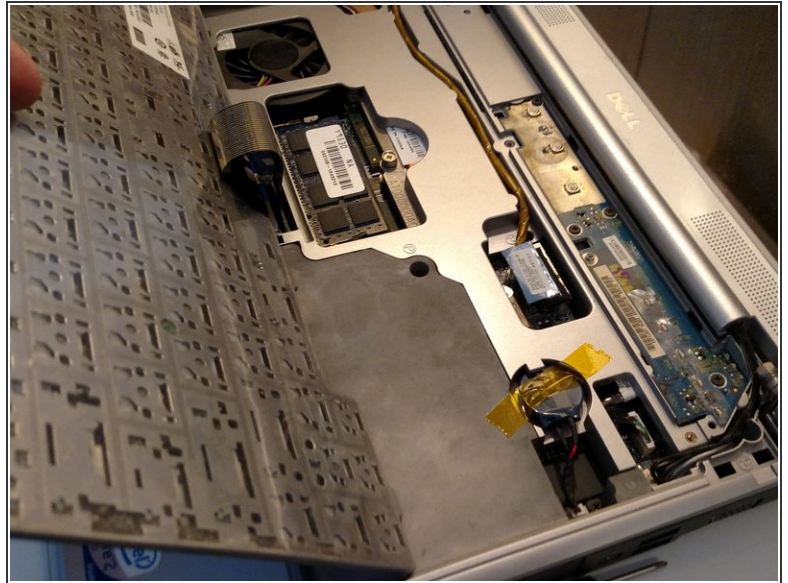
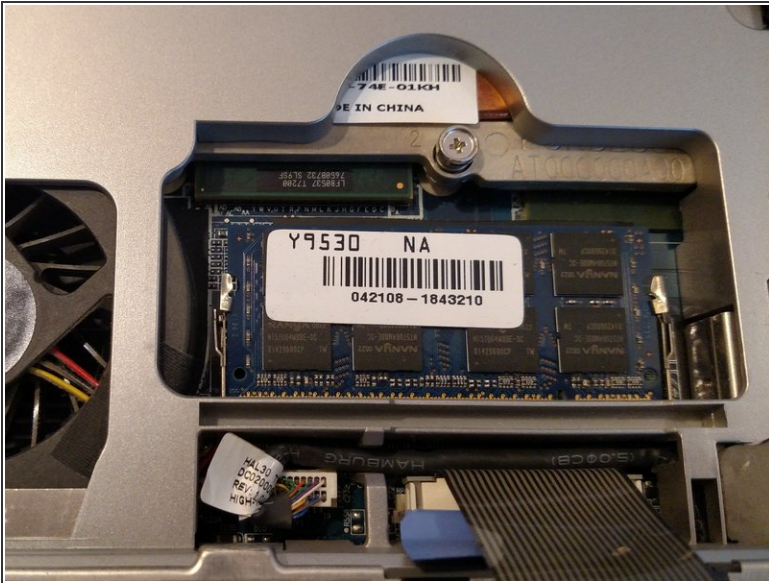
Step 5



● Steps for Top-Side Memory Slot

- Remove the 3 Phillips-head screws at the top of the keyboard.
 - After the 3 screws are removed, you will be able to lift the keyboard, exposing the top-side memory module slot.
- i** The keyboard will still be connected to the computer, via a ribbon cable. The ribbon cable is long enough to place the keyboard out of the way ...disconnecting the ribbon cable is not necessary.

Step 6



● Steps for Top-Side Memory Slot

- Using your fingertips, spread apart the clips, which secure the memory module in place.
- Once unsecured, the memory module will pop up, so you can remove it at a 45-degree angle.
- When installing the new memory module, you will notice it can only be inserted in one direction, due to the memory module indents.
- Secure the module with the clips, click it into place, and re-install the keyboard and hinge panel in reverse order of the above instructions.

To reassemble your device, secure the module with the clips, click it into place, and reinstall the keyboard and hinge cover in reverse order of the above instructions.