



Dell XPS M1330 CPU Replacement

Use this guide to replace a Dell XPS M1330 CPU.

Written By: Kai Kapossy



INTRODUCTION

If your CPU is causing your laptop to be unresponsive, or if it is overheating and running at a slower speed, then this guide can be used to replace it in about 30 minutes. You will need a Flathead 3.0 Screwdriver, a Phillips #01 Screwdriver, an iFixit opening tool, and tweezers.



TOOLS:

- [Phillips #1 Screwdriver](#) (1)
- [iFixit Opening Tools](#) (1)
- [Tweezers](#) (1)
- [Flathead Screwdriver](#) (1)

3.0mm



PARTS:

- [Dell XPS M1330 CPU](#) (1)
- [Dell XPS M1330 Fan](#) (1)

Step 1 — Battery



- Flip the laptop on its back, so that the underside is facing up.

Step 2



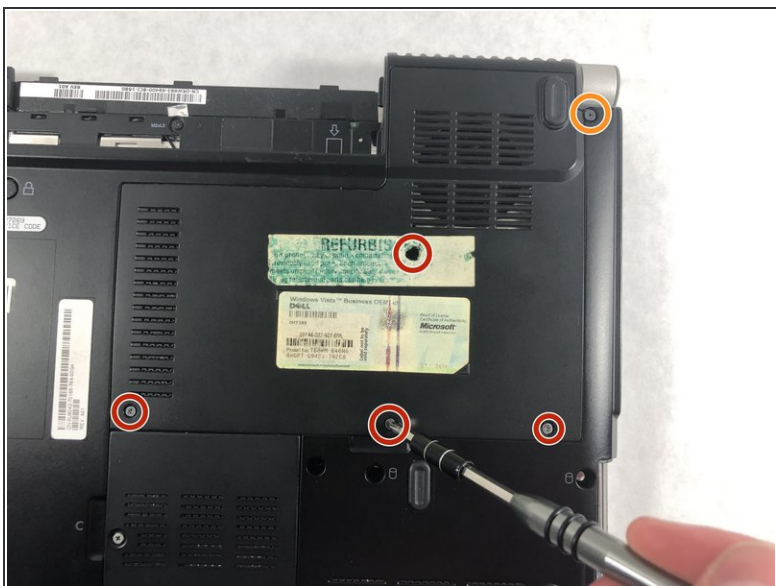
- Push and hold the slide button to the left and unlock the mechanism.

Step 3



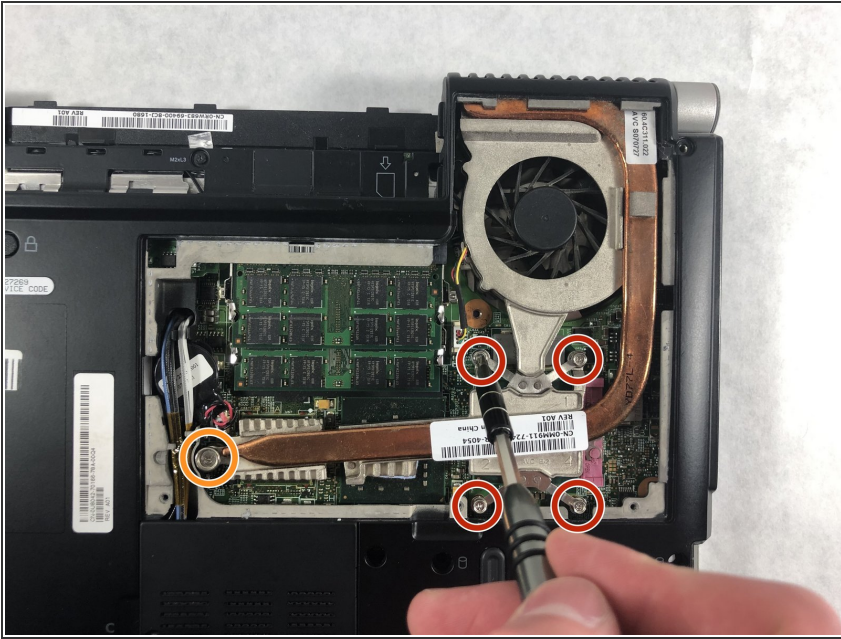
- Lift the computer up and slowly pull the battery straight out from the device.

Step 4 — Fan



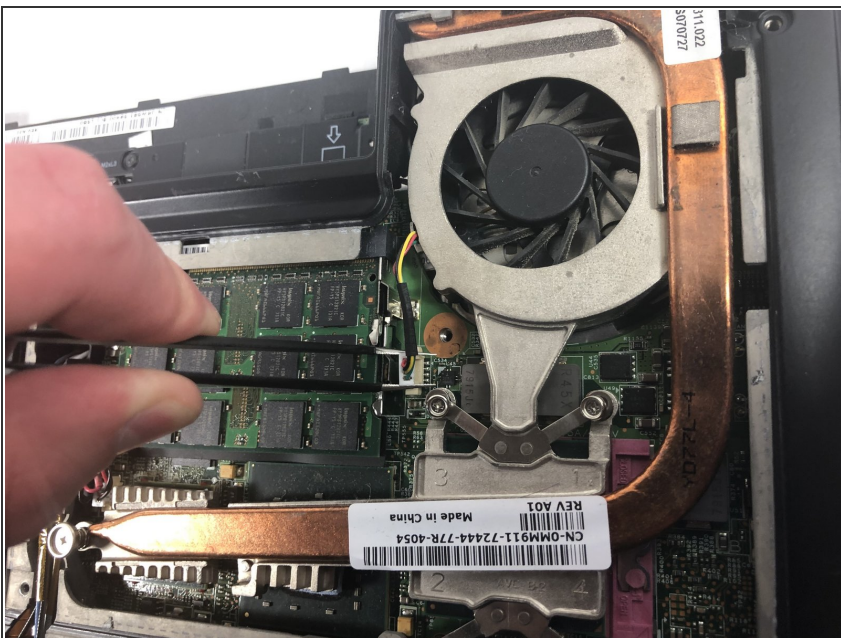
- Remove the four 5.0mm screws with a Phillips #1 screwdriver.
- Remove the one external 5.0mm screw with a Phillips #1 screwdriver.
- Remove the fan cover.

Step 5



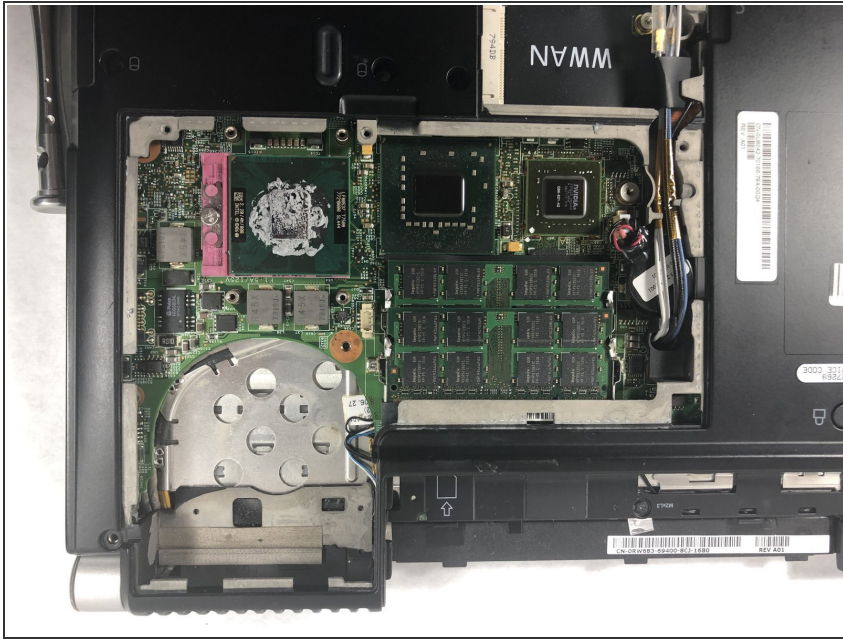
- Remove the four 0.1mm screws using the Phillips #1 screwdriver.
- Remove the one thicker 0.1 mm screw using the Phillips #1 screwdriver.

Step 6



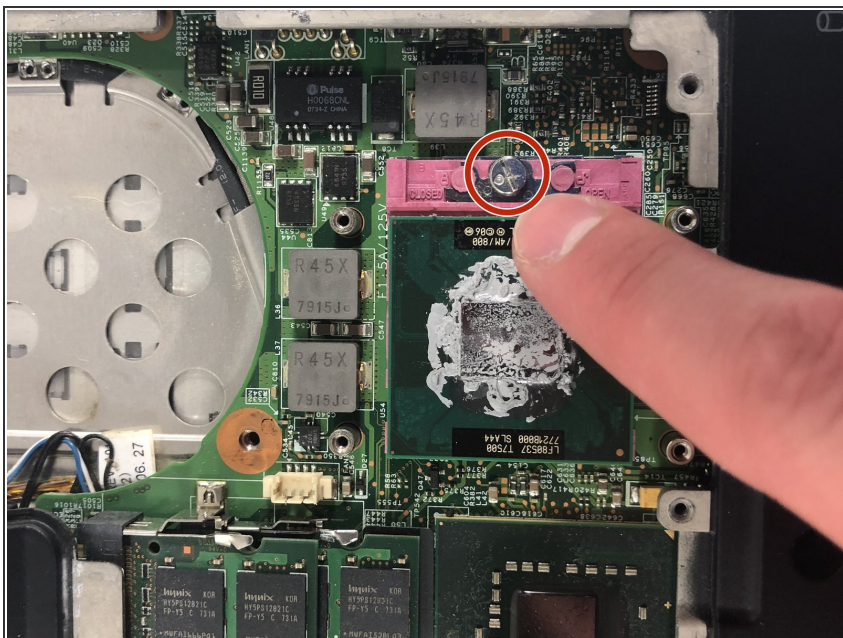
- ⚠ Be sure to carefully remove the wires as they are fragile and can rip easily.
- Remove the wire bay near the fan.
- Use the long nosed tweezers to carefully handle the white plastic piece that holds the wires together.
- Gently pull upward while moving your hand side to side so the plastic holder will detach.

Step 7



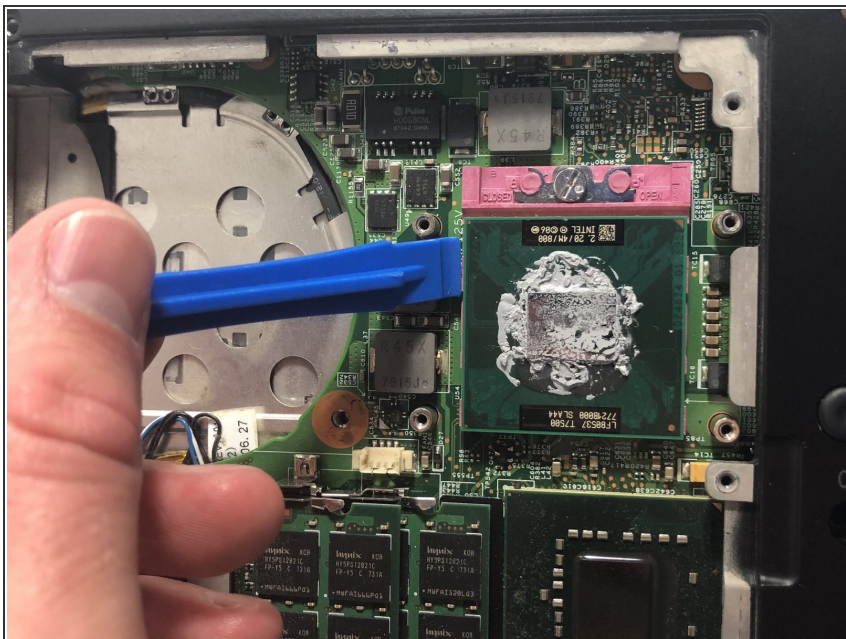
- Gently remove the fan and its attachments from the bay.

Step 8 — CPU



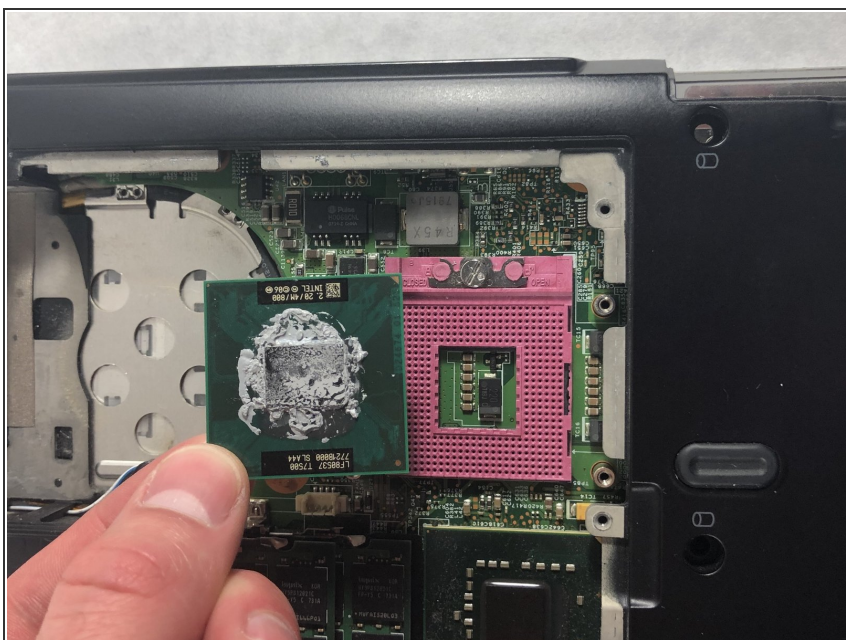
- Using the flathead screwdriver, turn the one screw counterclockwise to loosen the CPU, but do not remove the screw.

Step 9



- Using the iFixit opening tool, prop up the CPU.

Step 10



- Carefully lift the CPU away from its housing.

To reassemble your device, follow these instructions in reverse order.