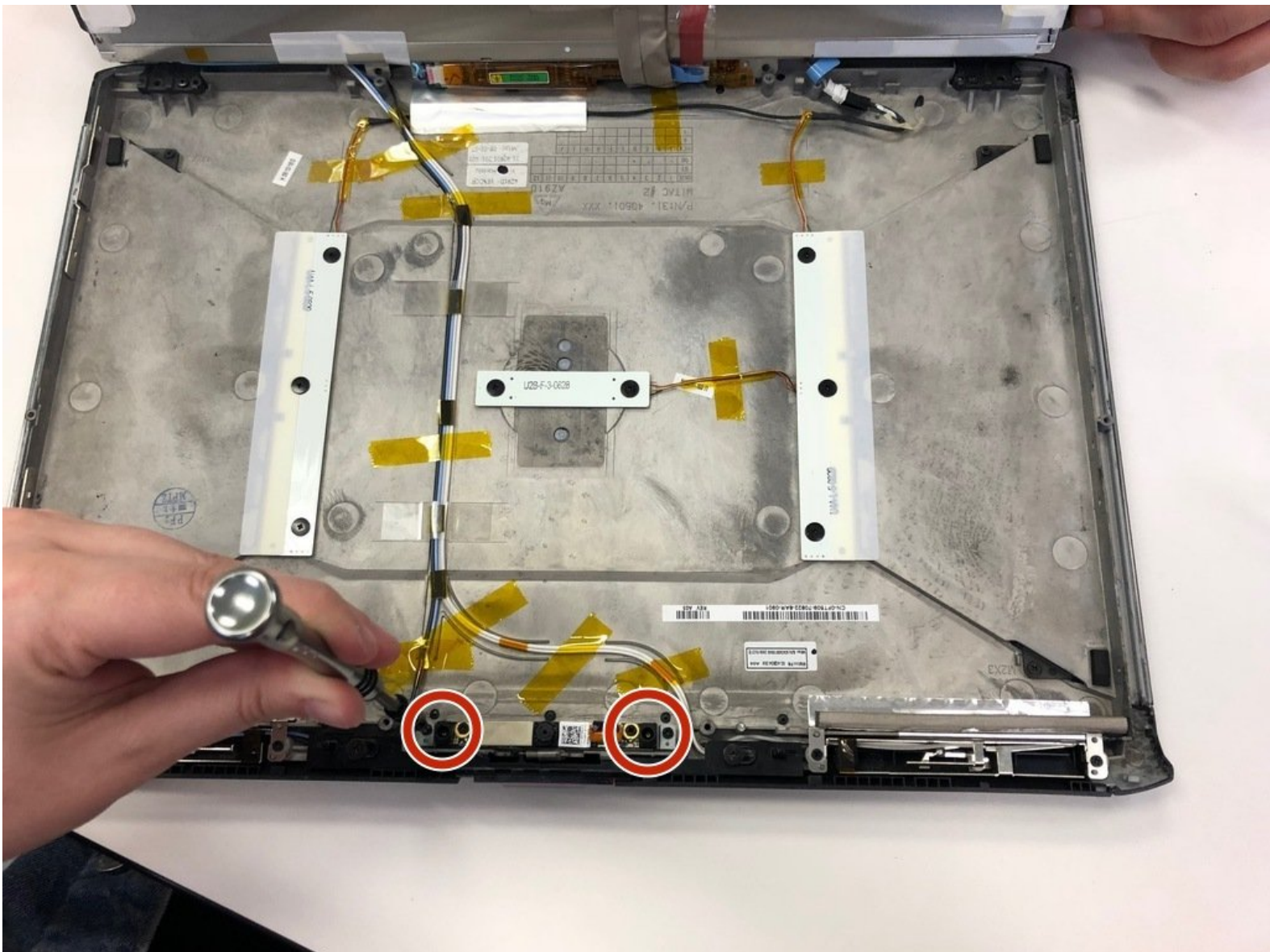




Dell XPS M1730 Webcam Replacement

Use this guide to replace the webcam on the Dell XPS M1730.

Written By: Natalie King





TOOLS:

- [Phillips #0 Screwdriver](#) (1)
-

Step 1 — Battery



- Push the sliding button near the battery compartment.

Step 2



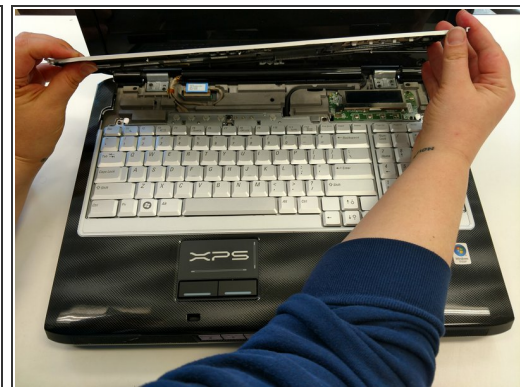
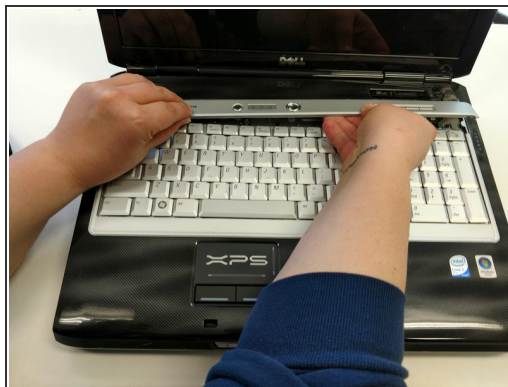
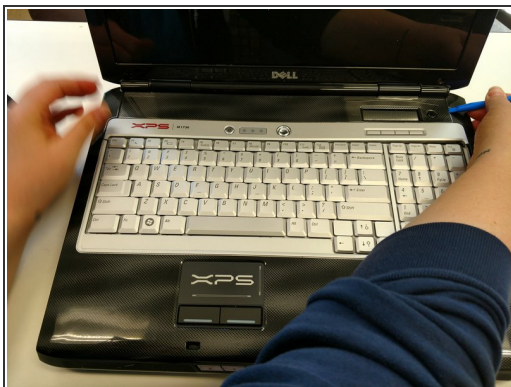
- Slide the button next to the battery and lift up on the lip of the battery edge.

Step 3



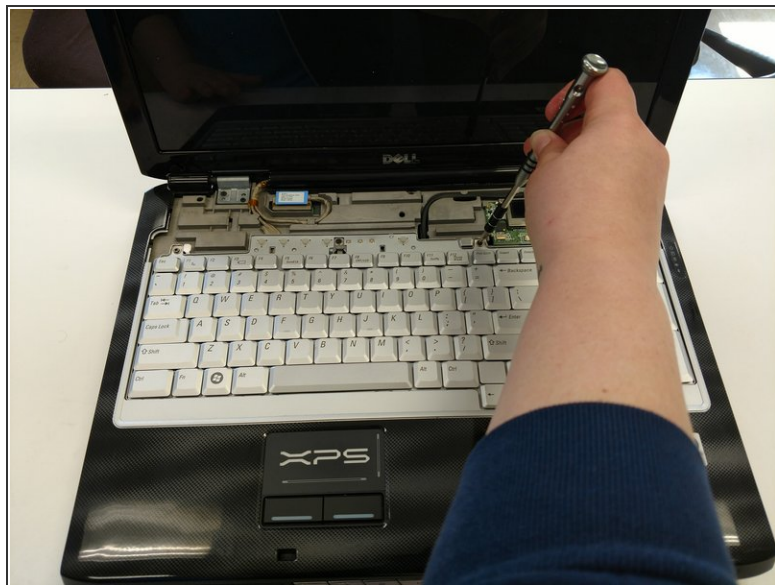
- Lift and remove the battery.

Step 4 — Keyboard



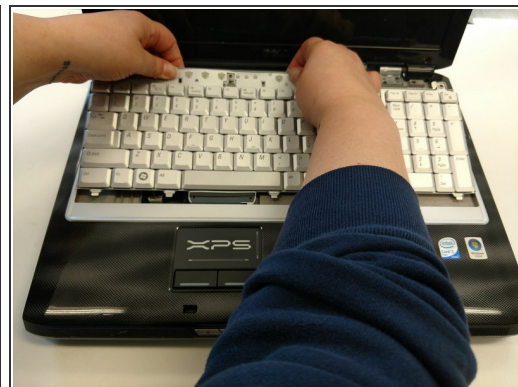
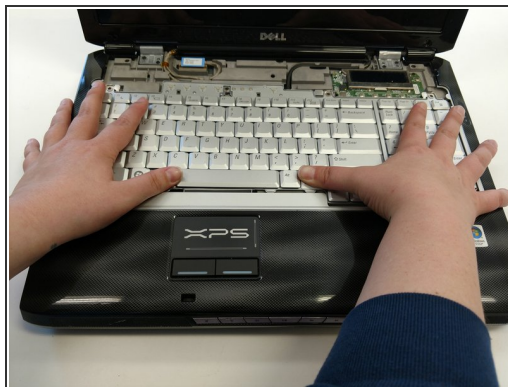
- Remove the plastic trim at the base of the screen. Start from the tab on the right side and work to the left side.

Step 5



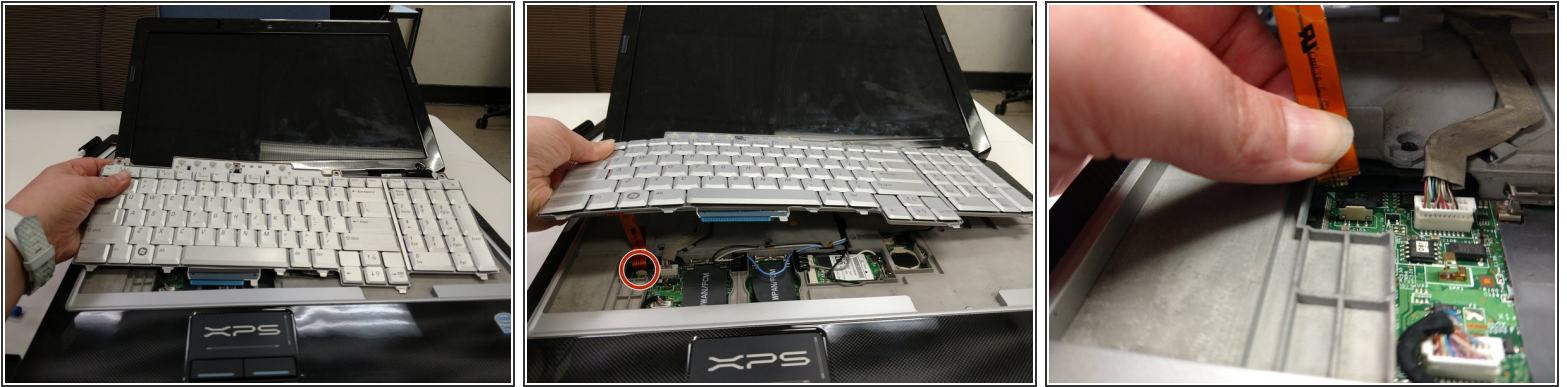
- Remove the four screws from the top of the keyboard bracket.

Step 6



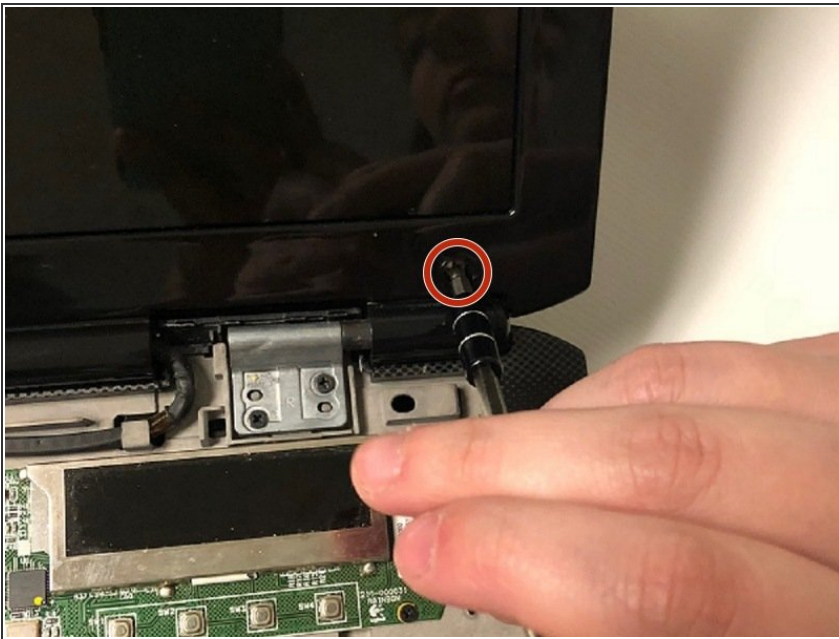
- Remove the keyboard by sliding it forward, off of the clips, and then lifting up.

Step 7



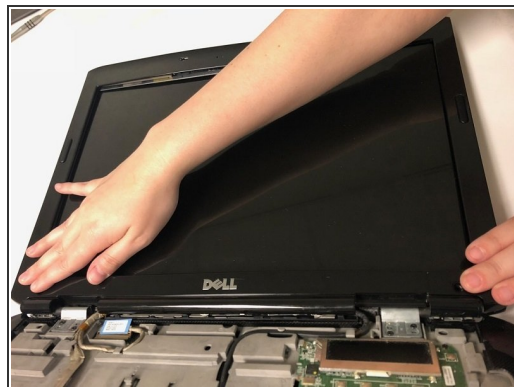
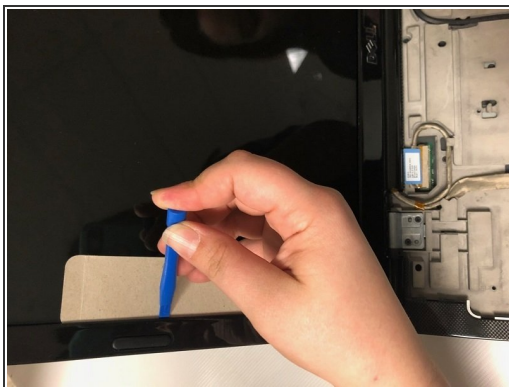
- Lift the keyboard about 2 inches up from the laptop platform.
- From this angle the keyboard ribbon connector can be seen and disconnected.

Step 8 — LCD Screen Display



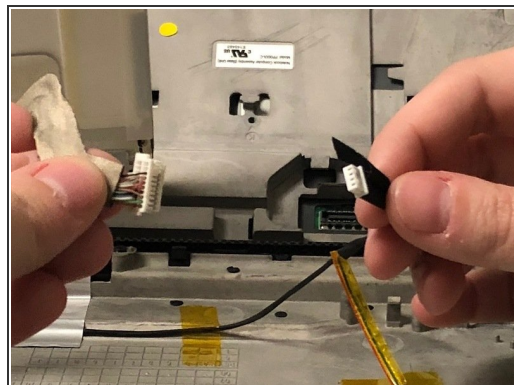
- Remove 2 M2x3mm screws that are located at the bottom of the plastic bezel with a PH0 screwdriver.

Step 9



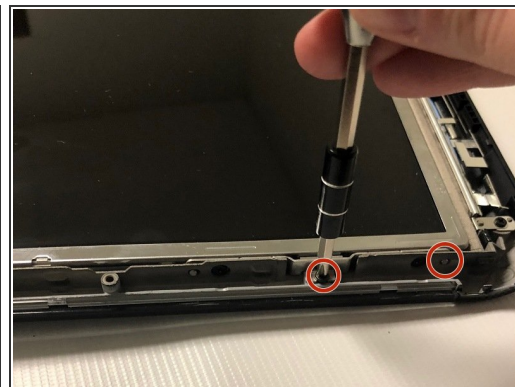
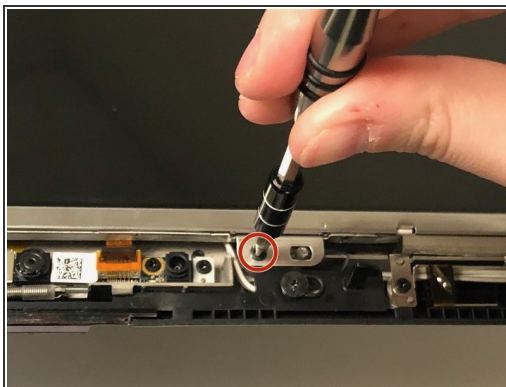
- Use iFixit plastic tool and a cutout of cardboard to pry out the plastic bezel around the edges of the LCD screen

Step 10



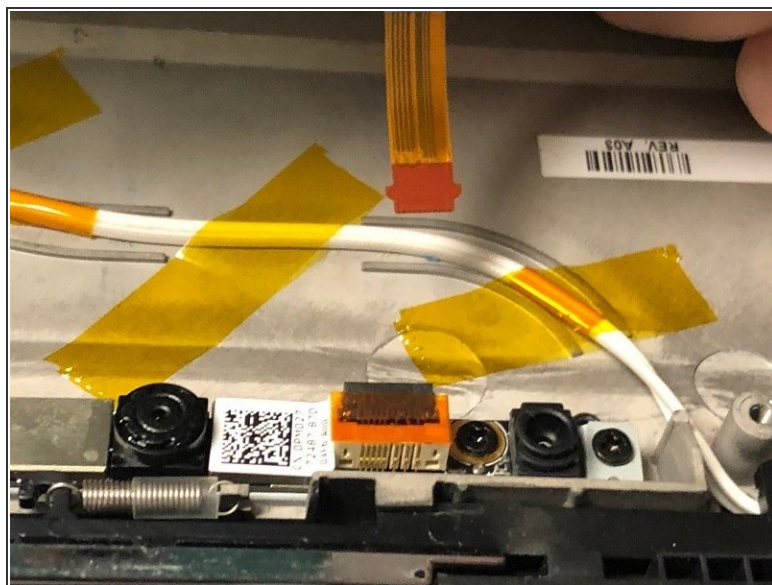
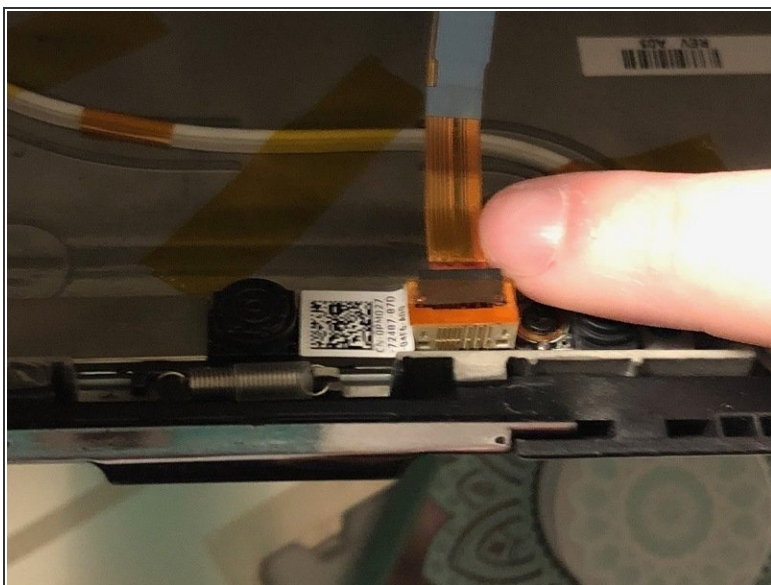
- Disconnect the display connectors by removing them from the grooves and unplugging them.

Step 11



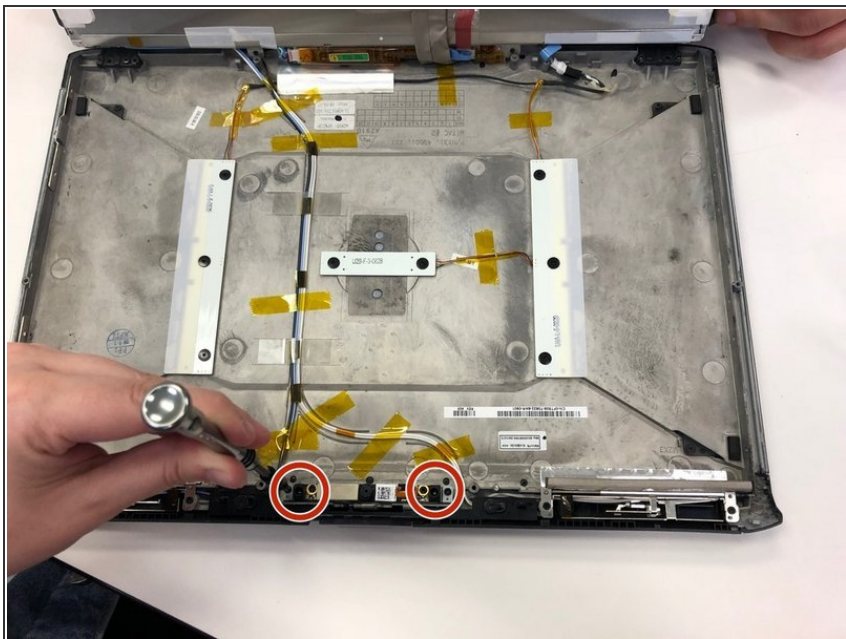
- Remove 12 M2x3mm screws along the edge of the screen frame with a PH0 screwdriver.

Step 12



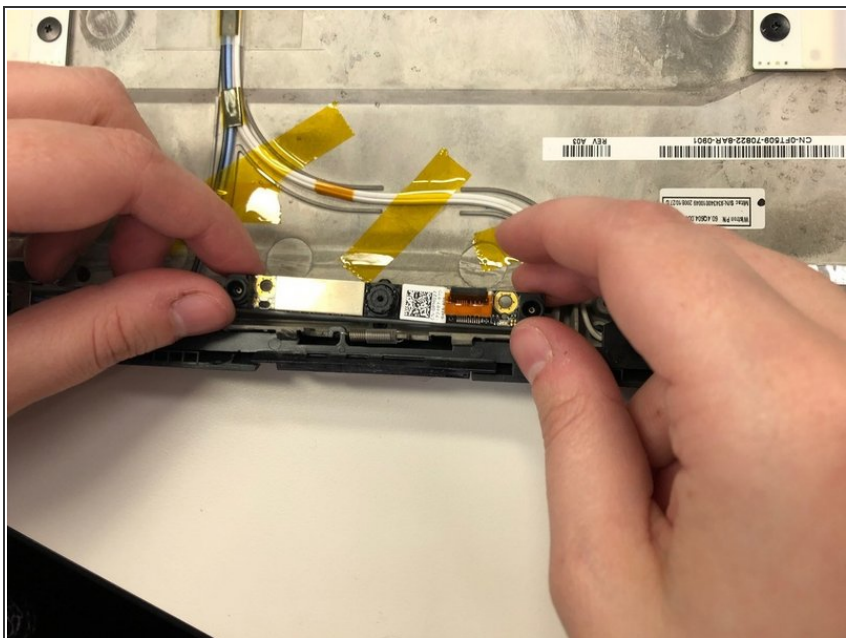
- Disconnect the display connector behind the top of the screen.

Step 13 — Webcam



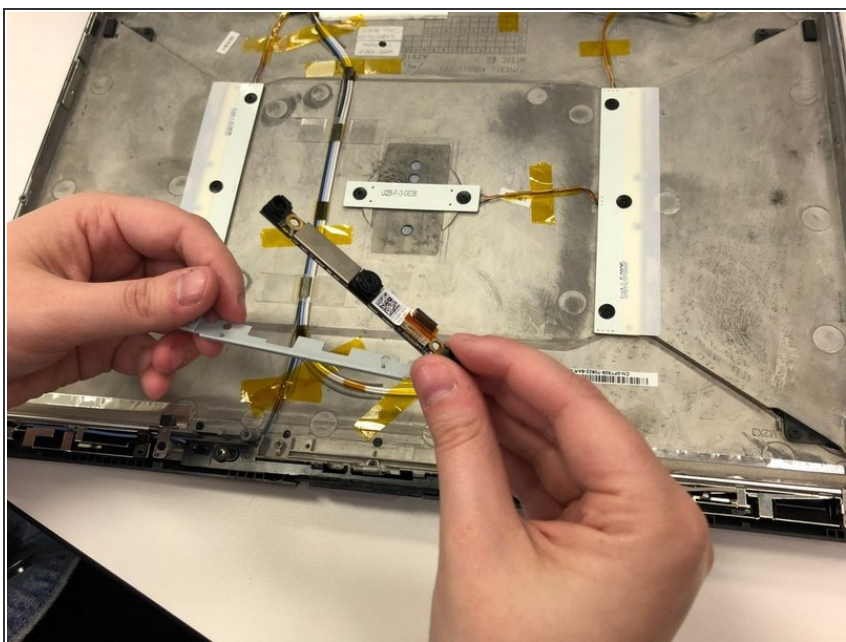
- Remove the four screws (M2x3mm) surrounding the webcam

Step 14



- Lift up on the webcam bar to pull it out.

Step 15



- Remove webcam bar and the metal tray underneath.
- Your webcam is now removed.

To reassemble your device, follow these instructions in reverse order.