



DeltaLab CT-40 Chromatic Tuner Input Jack Port Replacement

Learn to replace the audio input jack in your CT-40 Chromatic Tuner.

Written By: Theodore Tan



INTRODUCTION

Is your input jack broken in your chromatic tuner? Instead of buying a new one you can just buy the input part itself and replace it. This method works for similar tuners but this guide is specifically for the DeltaLab CT-40 Chromatic Tuner.

TOOLS:

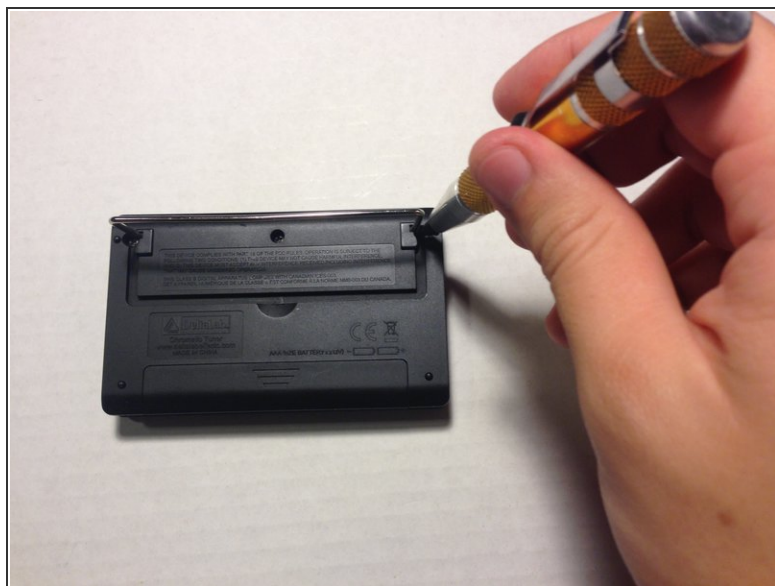
- [Flush Cutter](#) (1)
 - [Solder](#) (1)
 - [Soldering Iron](#) (1)
 - [Phillips #1 Screwdriver](#) (1)
-

Step 1 — Input Jack Port



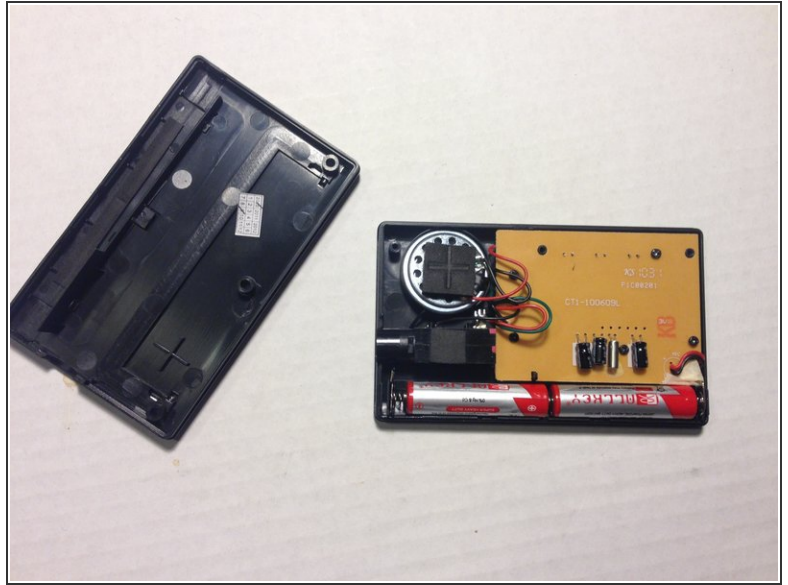
- First, open the metal stand to access the screws without damaging the body.

Step 2



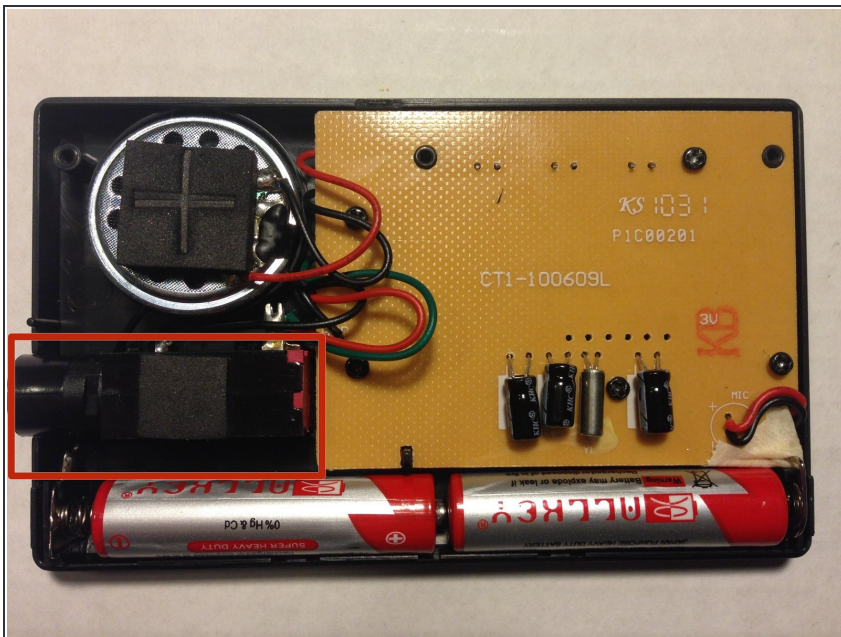
- Remove the 3 outer 1.2 mm Phillips #1 screws using a small head screwdriver.

Step 3



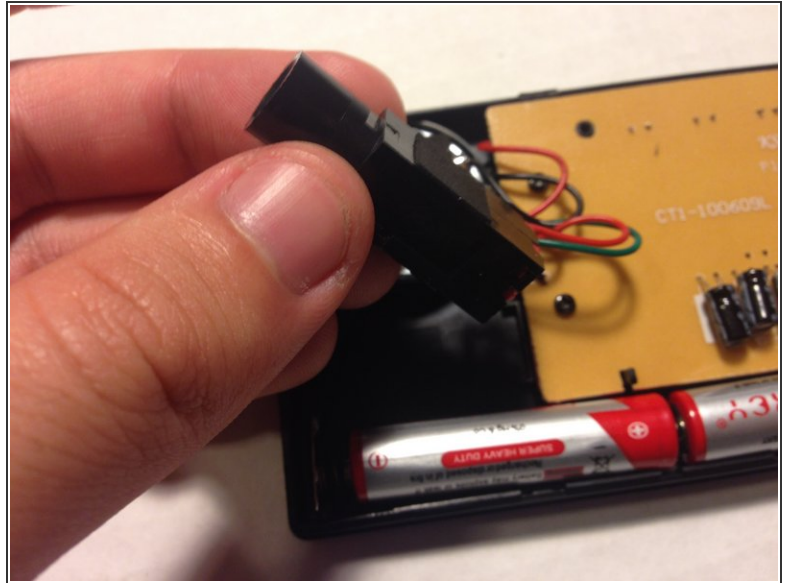
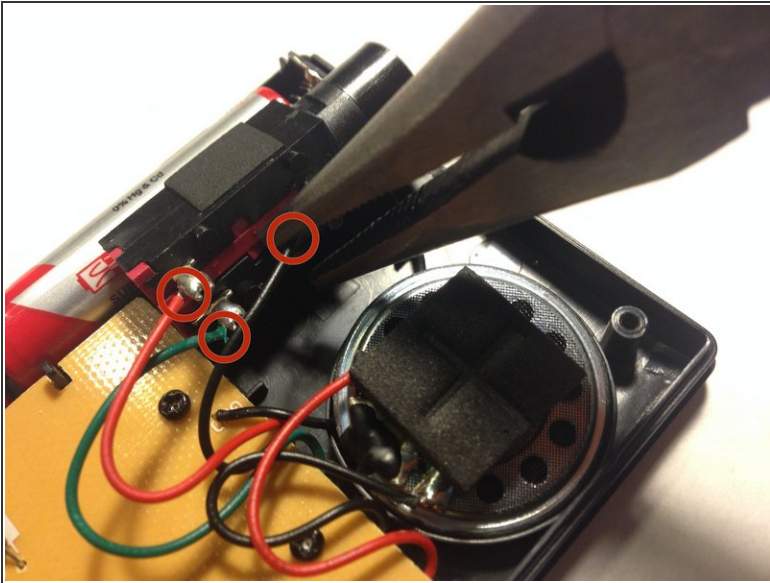
- Remove the back casing to reveal the inner circuitry.

Step 4



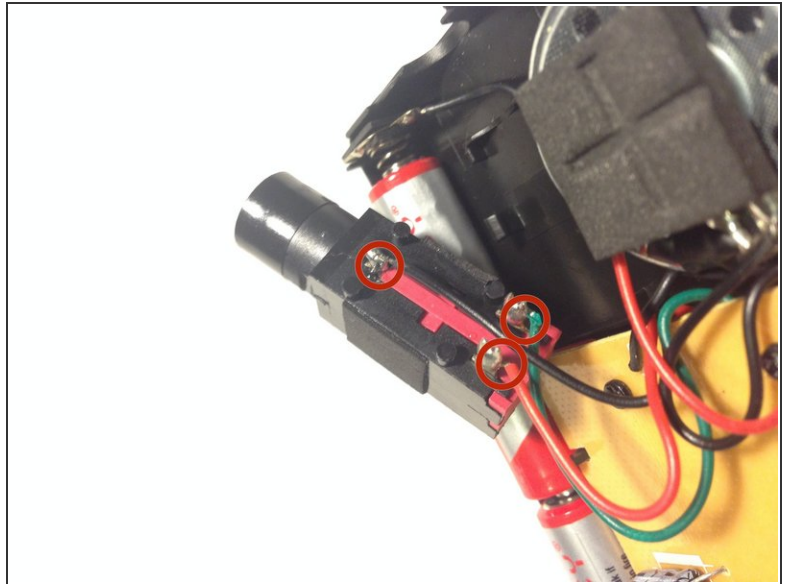
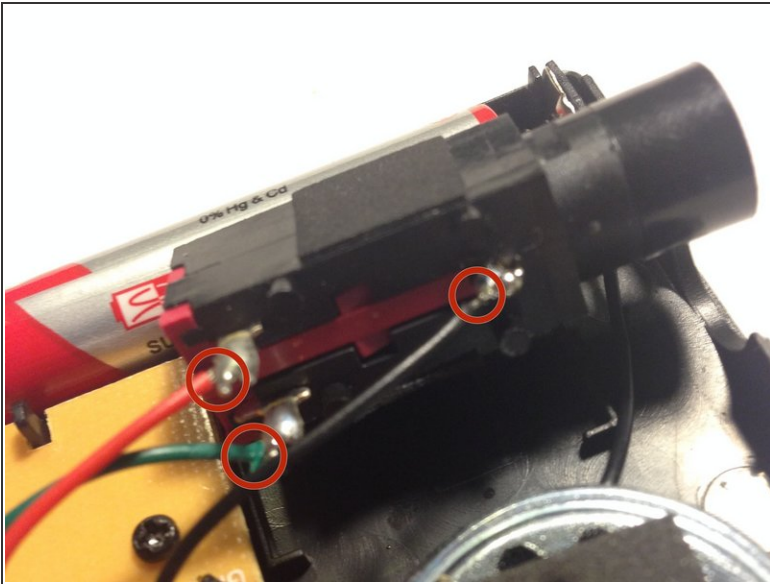
- Locate the different parts of your tuner, finding the broken input jack port.

Step 5



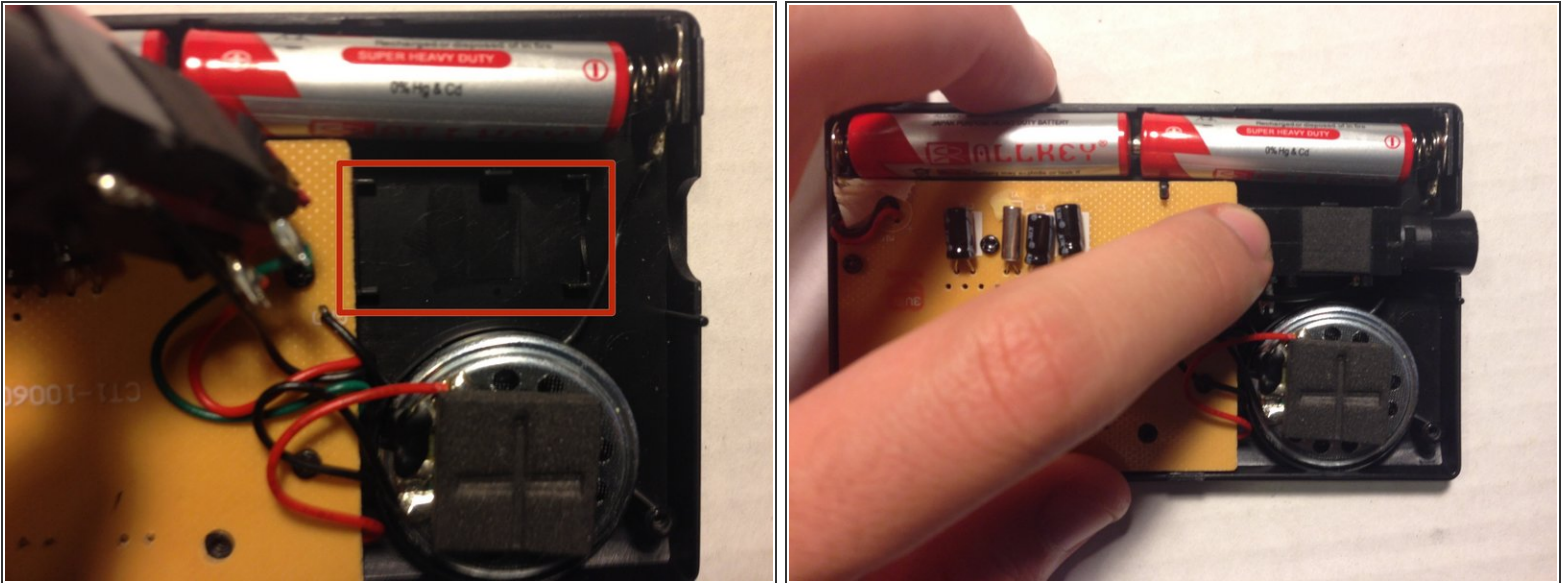
- Snip the wires attached to the input jack port using the wire cutter as close to the input jack port as possible.

Step 6



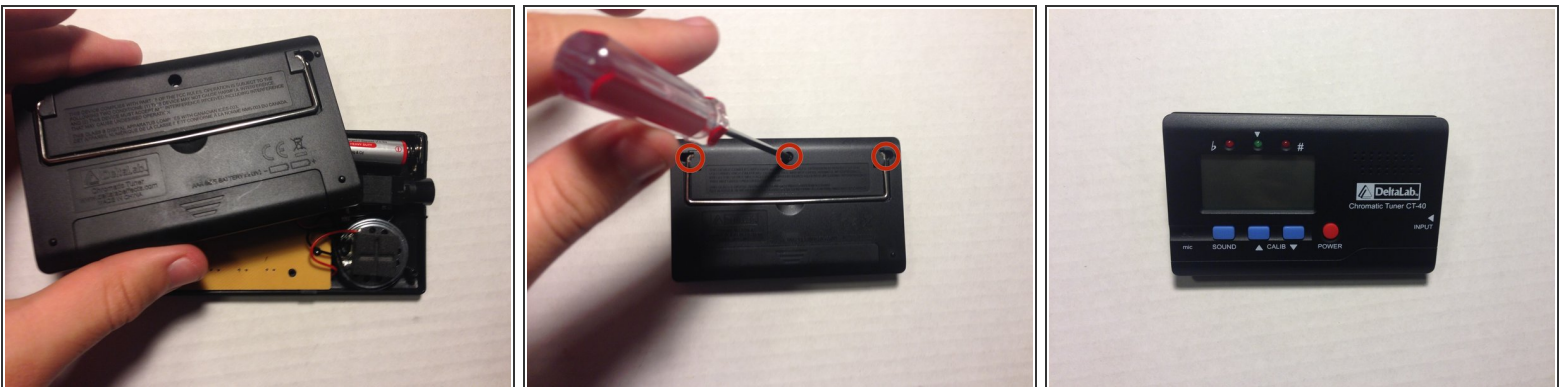
- Take your new input jack port and solder the wires to the corresponding connection areas on the new port.
- Learn how to solder ([here](#)).

Step 7



- Fold the wires back and put the new input port into the slot where it belongs on the tuner.

Step 8



- Replace the casing and 3 1.2 mm Phillips #1 screws using the screwdriver.