



Detach the Behringer Eurolive B212D Electronics Box

Detaching the metal electronics box is necessary to accessing or replacing any other subsystems.

Written By: gameslammer7



INTRODUCTION

This is a prerequisite for working any further on the electronics box. It is far easier to set aside the speaker casing and work on the electronics box alone.



TOOLS:

- [Phillips #2 Screwdriver](#) (1)
-

Step 1 — Removing the Behringer Eurolive B212D Electronics Box



⚠ CAUTION: Unplug your speaker from the power outlet.

- Remove the 8 Phillips screws from the back of the speaker.

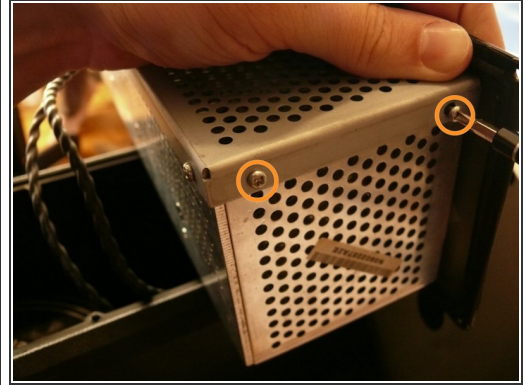
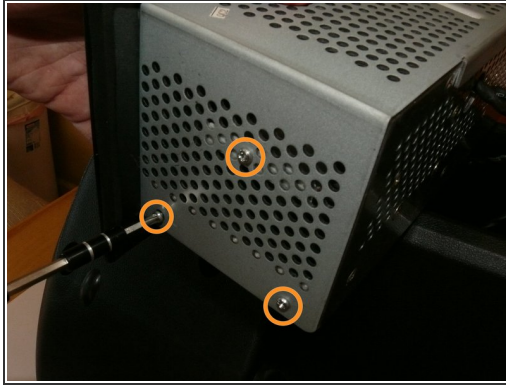
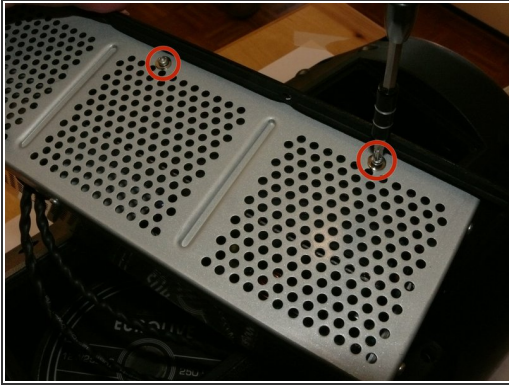
Step 2



- Carefully remove the back panel, lifting out the metal electronics-box with it.

⚠ To avoid damaging your speaker, remove slowly, as there is still a wire attached from the electronics box to the speaker.

Step 3 — Detach the Behringer Eurolive B212D Electronics Box



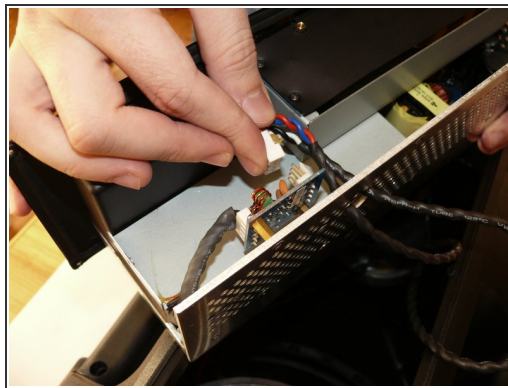
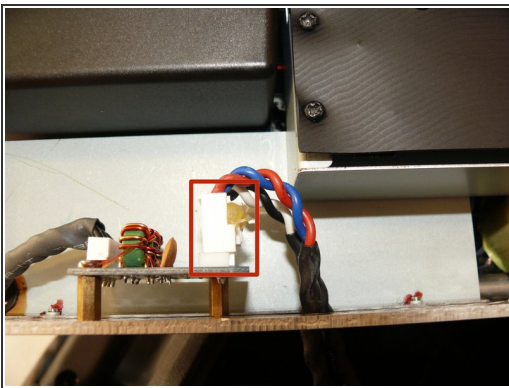
- There are **two silver, 6 mm-long machine screws** with **two 1/8" inner-diameter washers** on the exterior of the metal electronics box; *remove these first* using a **#2 philips screwdriver**.
 - There are **five of the same type of machine screw (silver, 6 mm-long)** remaining around the metal electronics box's exterior; remove these as well.
- ✦ You should have removed a total of **7 machine screws** and **2 washers**.
- ⓘ The reason for removing the two screws with the two washers first (or replacing them last when reassembling) is that their holes are actually slots. They are designed as slots to accommodate slop in the assembly, and if unscrewed out of order, you may have difficulty while removing - or possibly even damage - the other five screws.

Step 4



- Remove the portion of the metal housing that you freed with the 7 screws in the previous step.

Step 5



- Inside the metal electronics box housing is a **white clip attached to a small PCB**; remove this.
- ⓘ The white clip in this image has been glued, indicating that the manufacturer may not expect the end user to remove this clip; it is difficult to proceed with the disassembling without doing so, however, because the rest of the speaker does not provide a sufficient surface on which to work.
- Snake the clip head through the hole in the metal electronics box casing.

To reassemble your device, follow these instructions in reverse order.

This document was generated on 2019-10-10 10:11:11 AM (MST).

