



# Dewalt DCD778 Clutch Replacement

This guide is to show you how to replace the Dewalt DCD778 clutch.

Written By: Brittany



---

## INTRODUCTION

If you are having trouble controlling the speed of the drill there may be a problem with your clutch. By following this guide you will learn how to replace it.

---



### TOOLS:

- [T15 Torx Screwdriver](#) (1)
-

## Step 1 — Battery



- Grab the drill in one hand and cup the battery (located at the bottom of the drill) with the other hand.

## Step 2



- Use your other hand to push down on the yellow button on the battery.

### Step 3



- Pull the battery in a horizontal direction away from the drill.

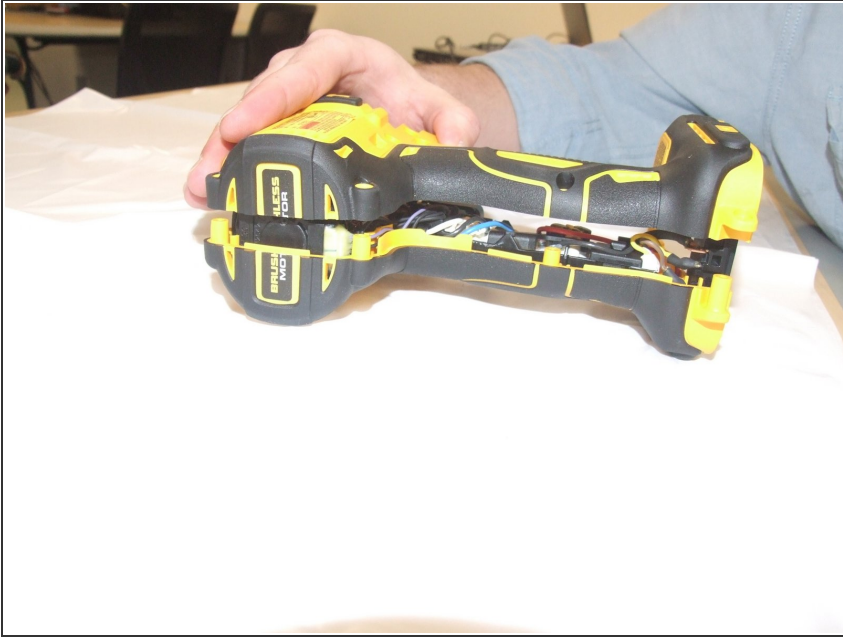
### Step 4 — Clutch



- Remove the eight 16 mm, Torx Security #15 screws.



## Step 5



- Lay the drill on its side and gently lift the top half off it.

## Step 6



- Lift drill mechanism from the drill assembly.

## Step 7



- Twist slightly and pull clutch away from motor.
- Remove clutch.

To reassemble your device, follow these instructions in reverse order.