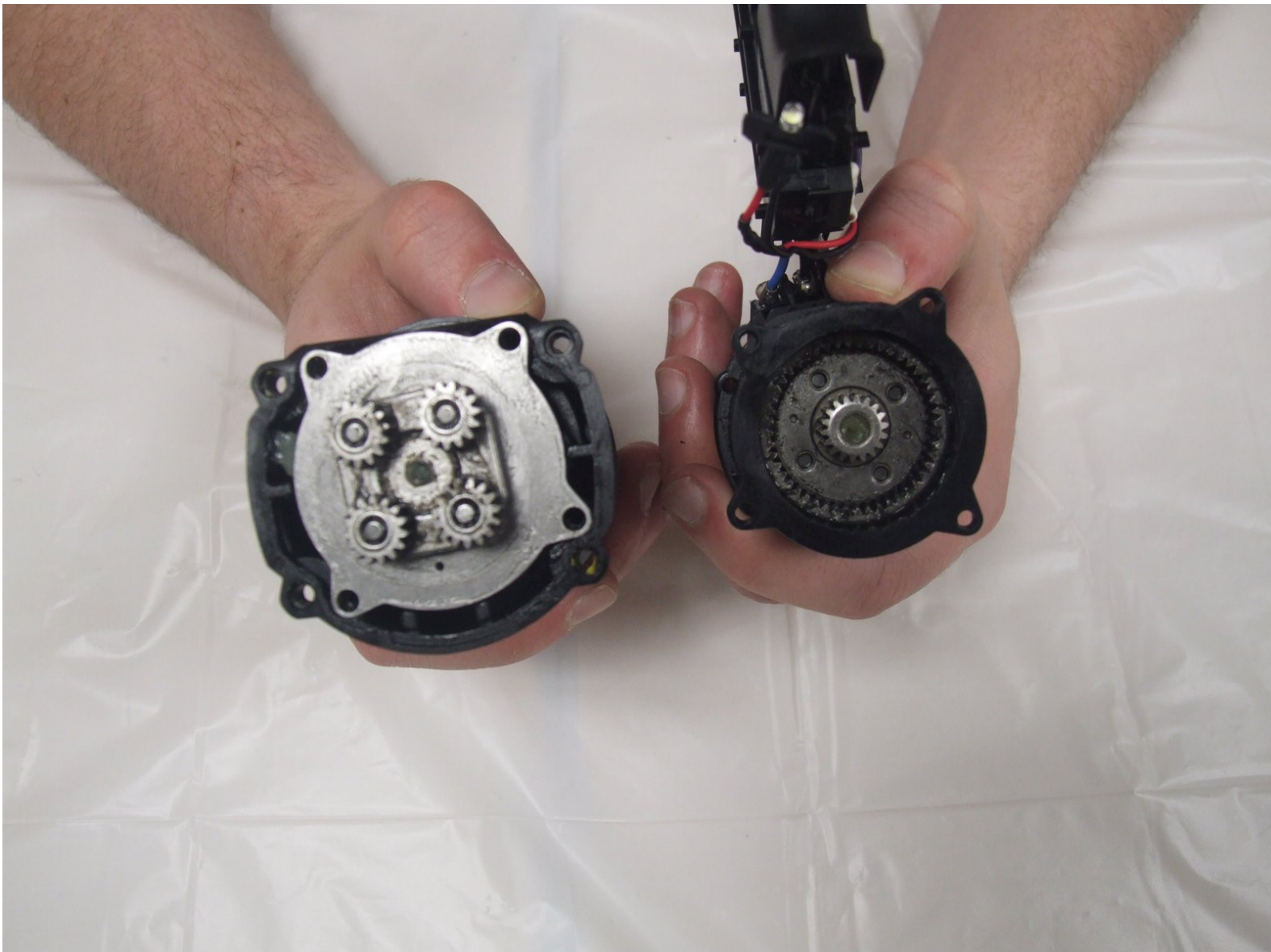




# Dewalt DCD778 Motor Replacement

How to replace a Dewalt DCD778 motor.

Written By: Brittany



## INTRODUCTION

If the motor of your Dewalt DCD778 is not operating properly or not operating at all, this guide will show you how to replace the motor of your drill.

---

### TOOLS:

- [T15 Torx Screwdriver](#) (1)
  - [Soldering Iron](#) (1)
-

## Step 1 — Battery



- Grab the drill in one hand and cup the battery (located at the bottom of the drill) with the other hand.

## Step 2



- Use your other hand to push down on the yellow button on the battery.

### Step 3



- Pull the battery in a horizontal direction away from the drill.

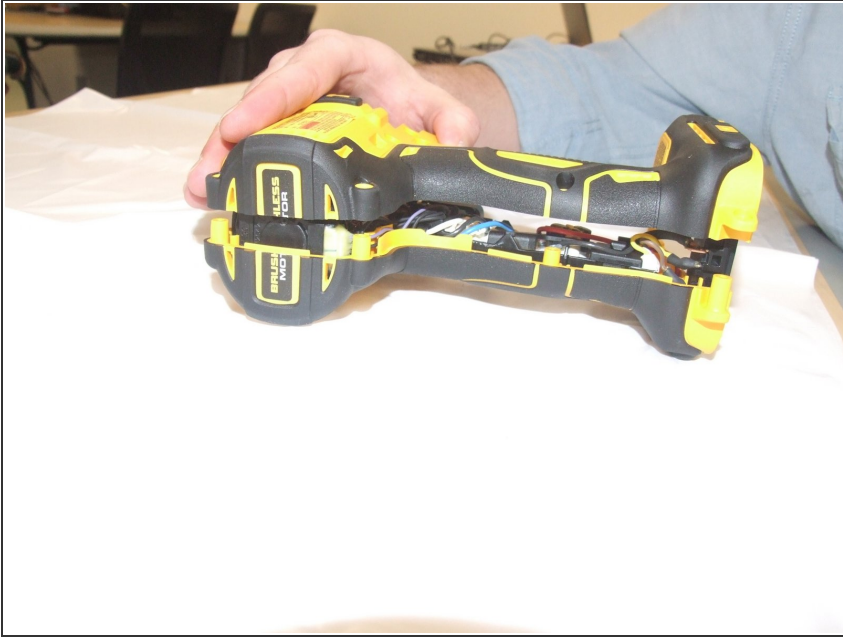
### Step 4 — Motor



- Remove the eight 16 mm, Torx Security #15 screws.



## Step 5



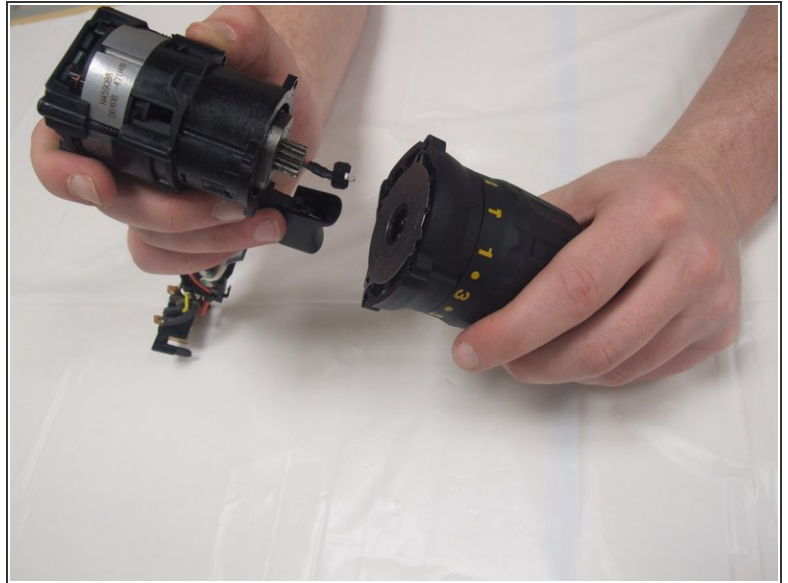
- Lay the drill on its side and gently lift the top half off it.

## Step 6



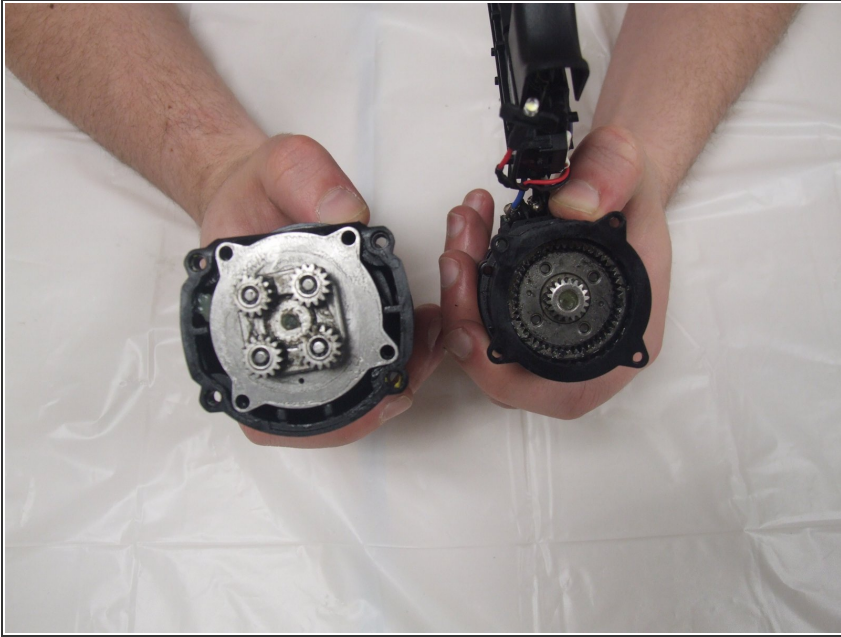
- Lift the drill mechanism out of the shell.
- [Desolder](#) the red and black wires from the motor.

## Step 7



- Slightly twist and pull motor away from the clutch.

## Step 8



- ★ When installing the replacement motor into the clutch make sure you correctly align the gears in order to assure that the motor is properly fitted to the clutch.

To reassemble your device, follow these instructions in reverse order.