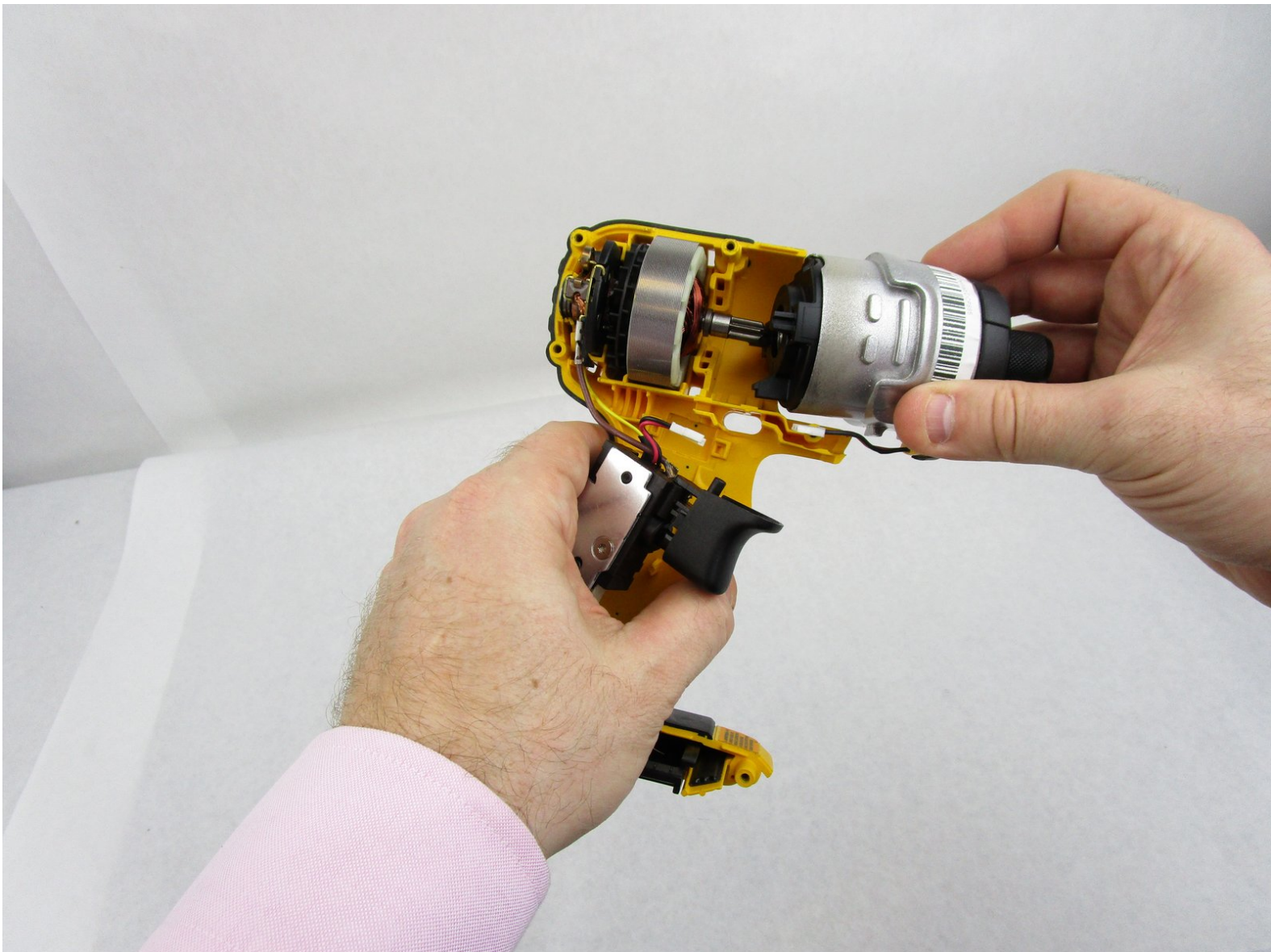




Dewalt DCF885 Motor Assembly Replacement

This guide will instruct you on how to remove the motor assembly.

Written By: Will





TOOLS:

- [T10 Torx Screwdriver](#) (1)
-

Step 1 — Battery



- Press the battery release button at the top of the battery.

Step 2



- Pull the battery away from the tool.

Step 3 — Motor Assembly



- Remove the eight 18 mm Torx Security #10 screws.

Step 4



- Separate the two halves of the outer case. Set the empty side down and out of the way.

Step 5



- Disconnect the connector from the motor assembly.

Step 6



- Pull the motor away from the brush assembly.

To reassemble your device, follow these instructions in reverse order.