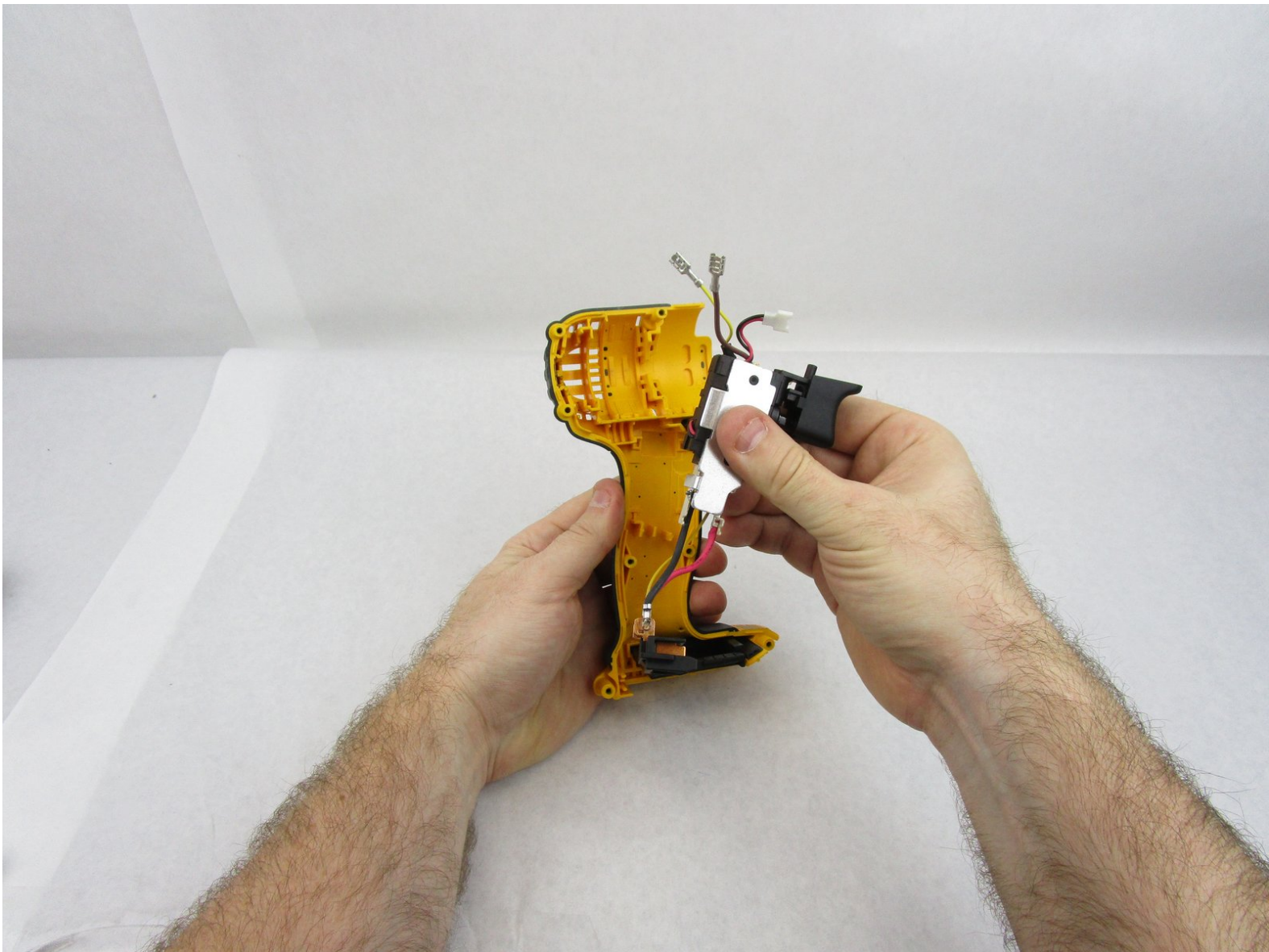




Dewalt DCF885 Switch Assembly Replacement

This guide will assist you in replacing the switch assembly.

Written By: Brittney Dismuke



INTRODUCTION

This guide will show you how to replace the switch assembly.



TOOLS:

- [T10 Torx Screwdriver](#) (1)
 - [ESD-safe pry tool](#) (1)
-

Step 1 — Battery



- Press the battery release button at the top of the battery.

Step 2



- Pull the battery away from the tool.

Step 3 — Motor Assembly



- Remove the eight 18 mm Torx Security #10 screws.

Step 4



- Separate the two halves of the outer case. Set the empty side down and out of the way.

Step 5



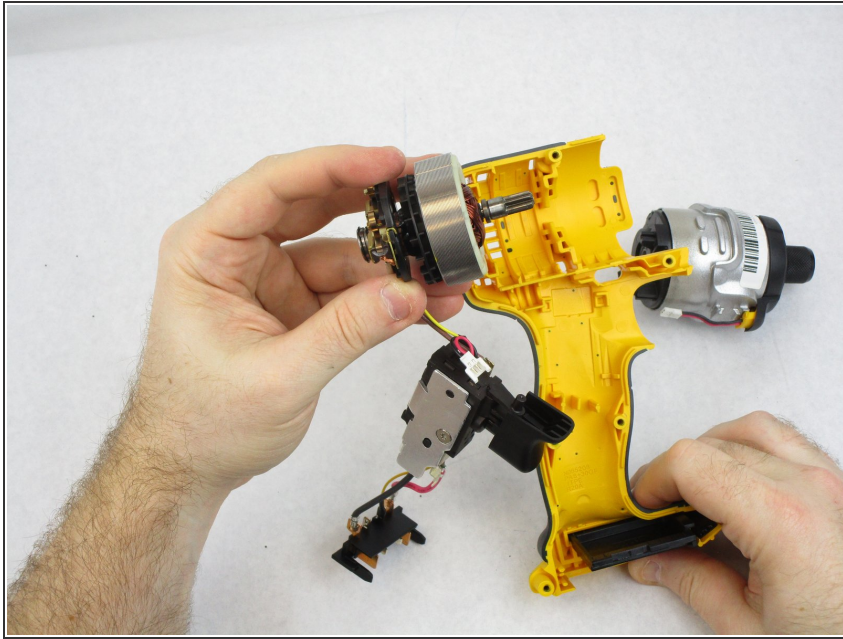
- Disconnect the connector from the motor assembly.

Step 6



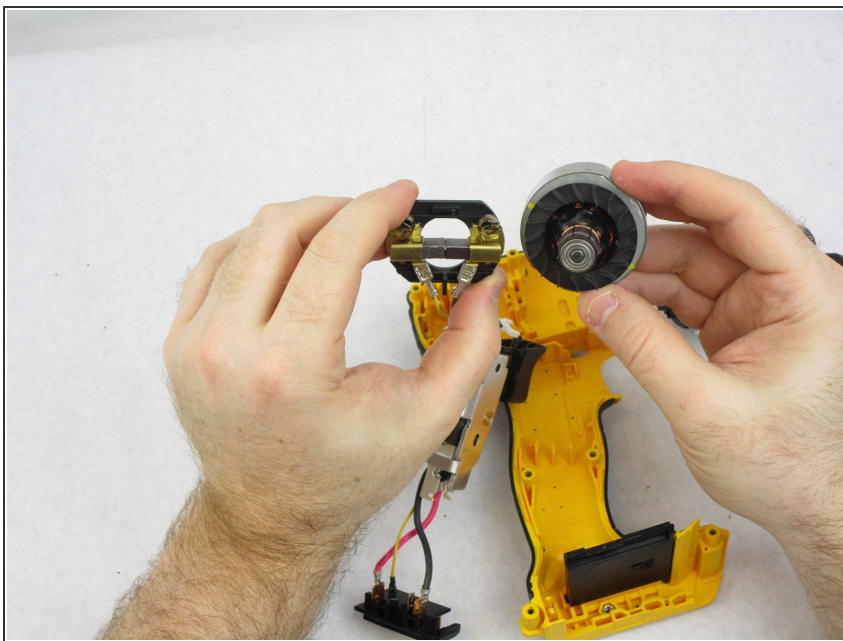
- Pull the motor away from the brush assembly.

Step 7 — Brush Assembly



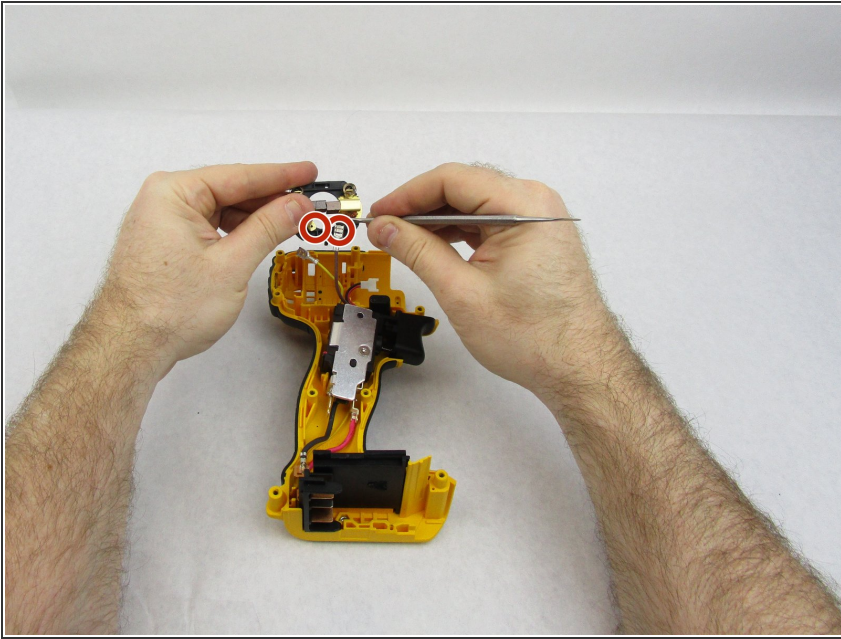
- Lift the brush assembly out of the drill case.

Step 8



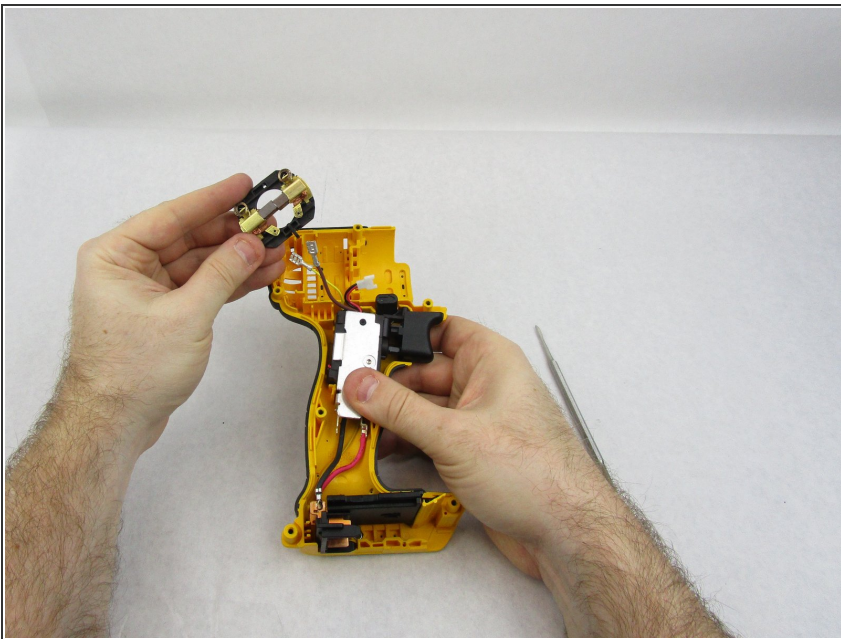
- Pull the armature assembly apart from the brush ring assembly.

Step 9



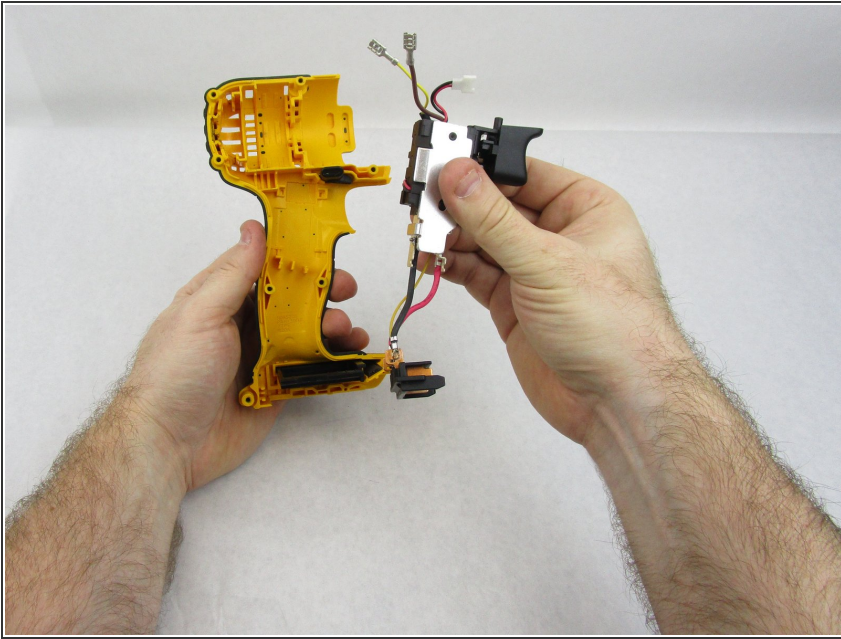
- Pry the two circled connectors apart from the brush ring assembly.

Step 10



- The brush assembly is now removed from the drill body.

Step 11 — Switch Assembly



- Pull the switch assembly up and out of the drill case.

To reassemble your device, follow these instructions in reverse order.