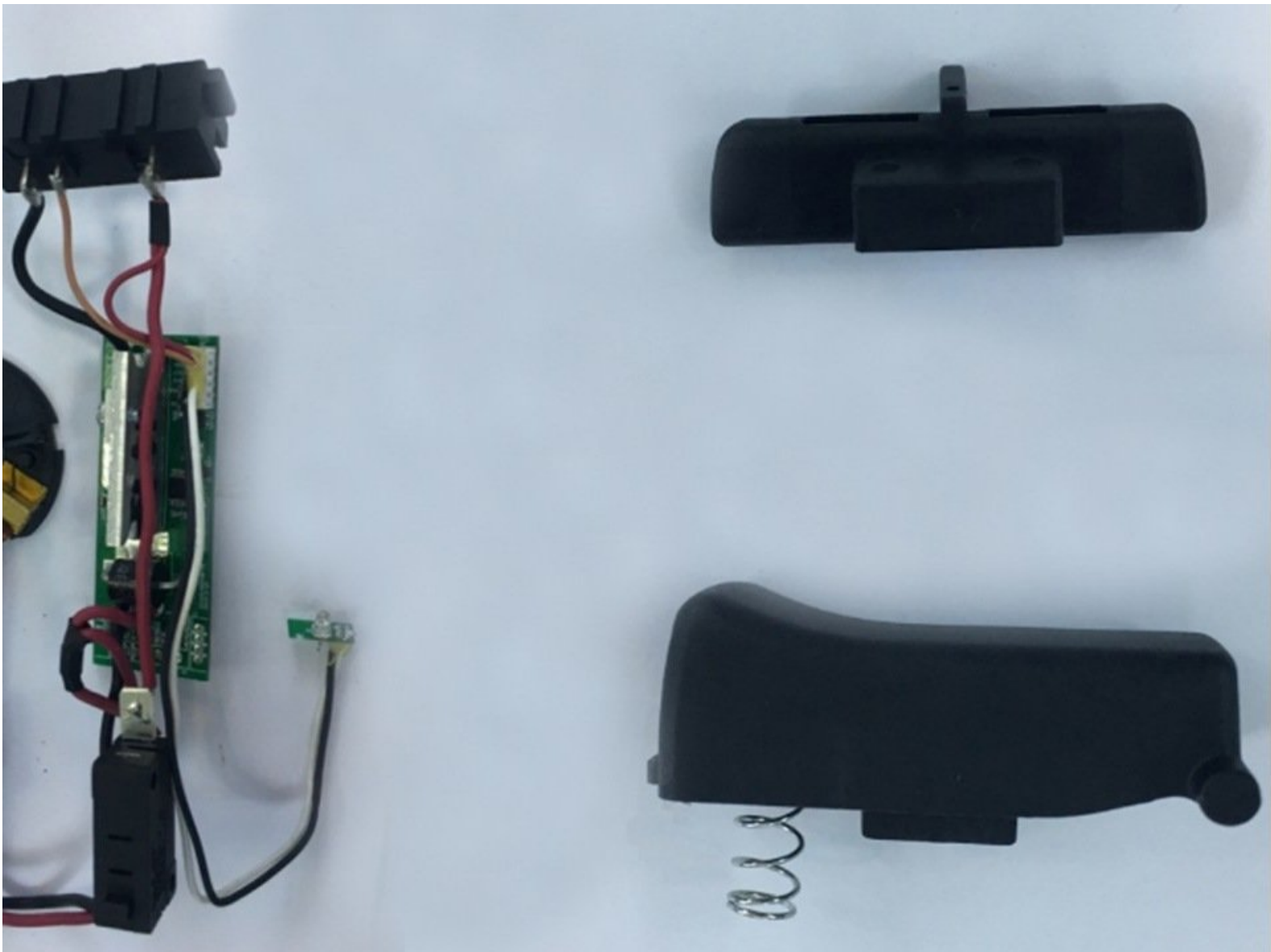




Dexter cordless angle grinder switch ON/OFF button replacement Replacement

Written By: Dakhir Katchiev

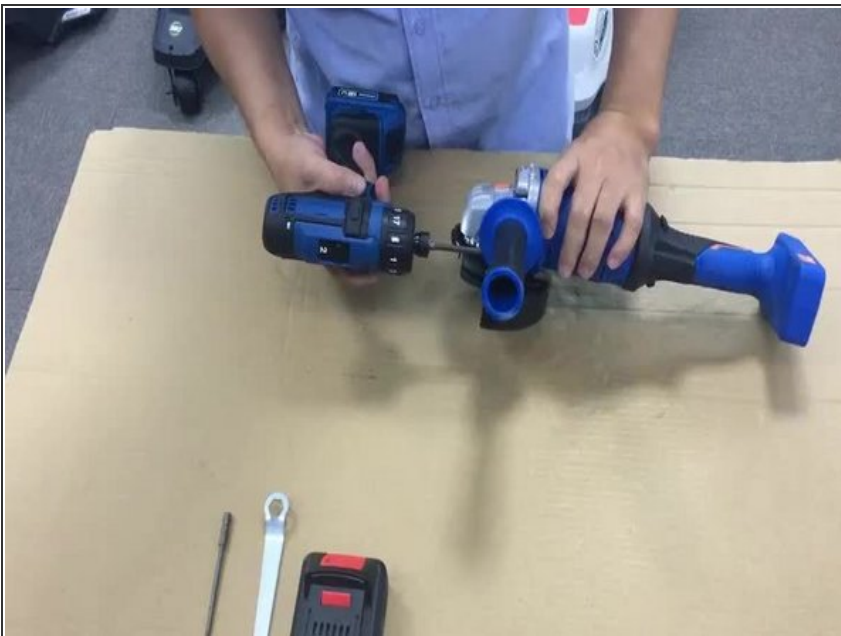


Step 1 — switch ON/OFF button replacement



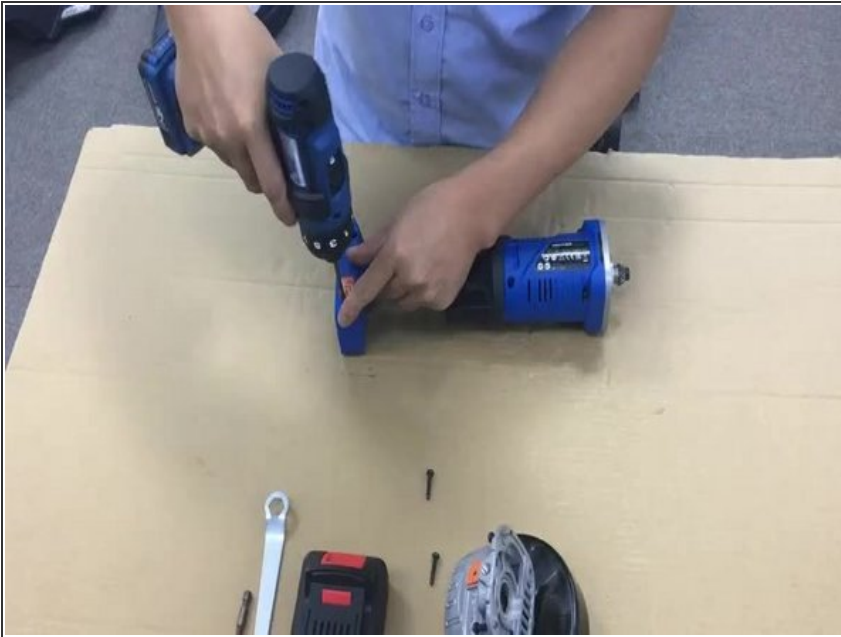
● 1

Step 2



● 2

Step 3



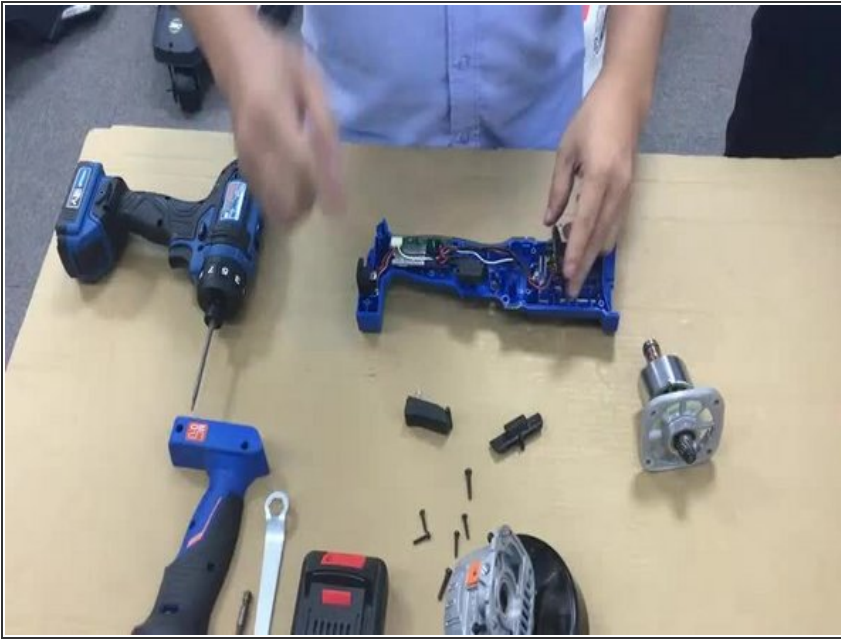
● 3

Step 4



● 4

Step 5



● 5

Step 6



● 6

Step 7



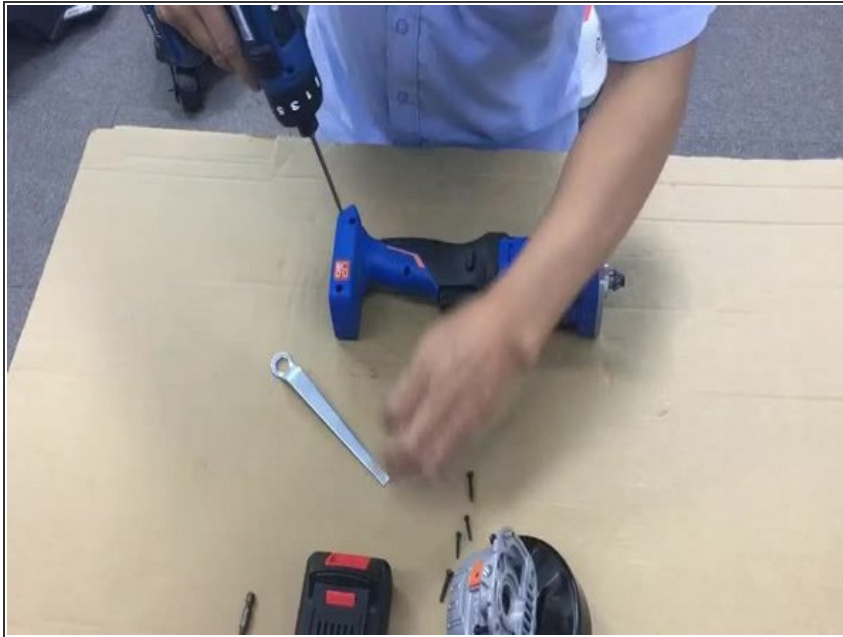
● 7

Step 8



● 8

Step 9



● 9

Step 10



● 10

Step 11



● 11

To reassemble your device, follow these instructions in reverse order.