



# Difference between fake and original

This guide will show the difference between the fake and the original Sony DualShock 4 (ZCT2U) controller.

Written By: koppie007



---

## INTRODUCTION

Hi All,

Are you in doubt? Not sure if it's real or fake? Well, hopefully I can help you out then.

There are some pretty good fakes though. But eventually you can always spot fakes.

Hopefully it will help you to determine whichever it's fake or not.



### TOOLS:

- [iFixit Opening Picks set of 6](#) (1)
  - [Phillips #00 Screwdriver](#) (1)
-

## Step 1 — Comparing controllers



- The black controller is an original Sony V2. The silver one is fake. The front housing looks good so far.
- I'm showing in picture 2 only the fake one. The tiny letters XF.LIN behind the battery capacity cannot be found on the original. Same for the letters "DW" in front of the serial code. Everything else looks the same like the original.

## Step 2 — The Screws



- The first picture is the original. It has the original PH00 screws installed.
- The 2nd picture displays the fake one. They used PH1 screws for this one.
- And as you can see in the 3rd picture, the fake ones are way shorter than the original screws.

This document was generated on 2019-12-13 02:01:25 PM (MST).

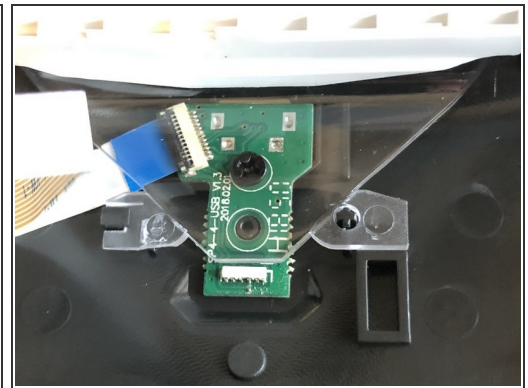
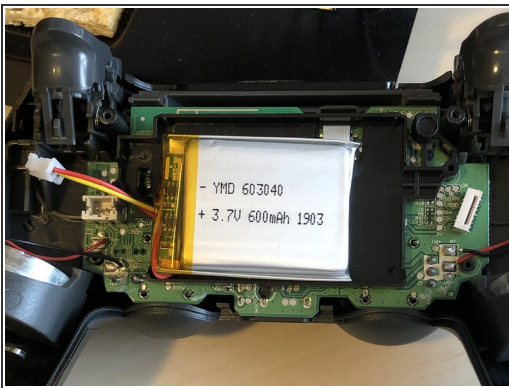


### Step 3 — The light



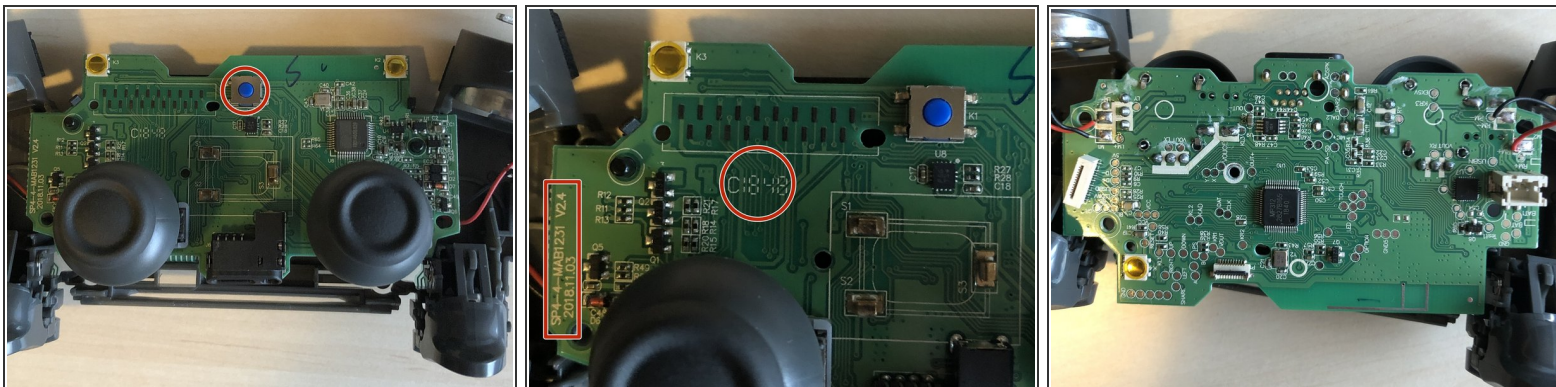
- When the controller is searching for the PS4, it should give a bright white light, not turquoise! It's obvious that the LED/Micro USB board is fake.

### Step 4 — Battery and LED/USB board



- Now I'll open the controller and show some more fake parts! The battery is not even close to the original one. And it's an 600mAh battery. The original delivers 800mAh. Also the fake one was telling that there was an 800mAh battery in...
- The 2nd picture shows the original battery. Quiet a difference.
- The 3rd picture shows the LED/Micro USB board. It's obvious fake. I do not have an picture of the original one this time. There also should be text on it like (example): JDM-011 or JDM-030. There is nothing on it here. And the text colour should be in gold not in white. You can also see the fake screw holding it together again.

## Step 5 — Motherboard



- In the 1st picture, you can clearly see a switch. The button should not be blue, but it should be white/grey.
- You should see an motherboard name, like: JDM-040 or JDM-055. This indicated again that it's a fake.
- 3rd picture shows the fake motherboard again (back side).

That's it actually. There are more stuff to recognise if it's a fake or not, but for what I've shown, those are the biggest differences between them.