



DigiLand DL718M Camera Lens Replacement

This guide will help you replace your front and rear camera lens on your DigiLand DL718M tablet.

Written By: Alayna Knarian



INTRODUCTION

If your DigiLand DL718M tablet's camera is cracked, dysfunctional, or producing low-quality photos, use this guide to replace the camera lens.

Both the front-facing camera and rear-facing camera are attached to each other and to the motherboard; thus, if one lens is failing, both lenses will need to be replaced using the steps in this guide.

This process requires you to remove the back panel of the device and thus expose the motherboard. Be careful when working with an exposed motherboard as you could damage it, if it comes into contact with moisture. It is motion sensitive, and small aspects can be easily jostled out of place.

Before beginning, power the tablet off and disconnect it from any external power source.

TOOLS:

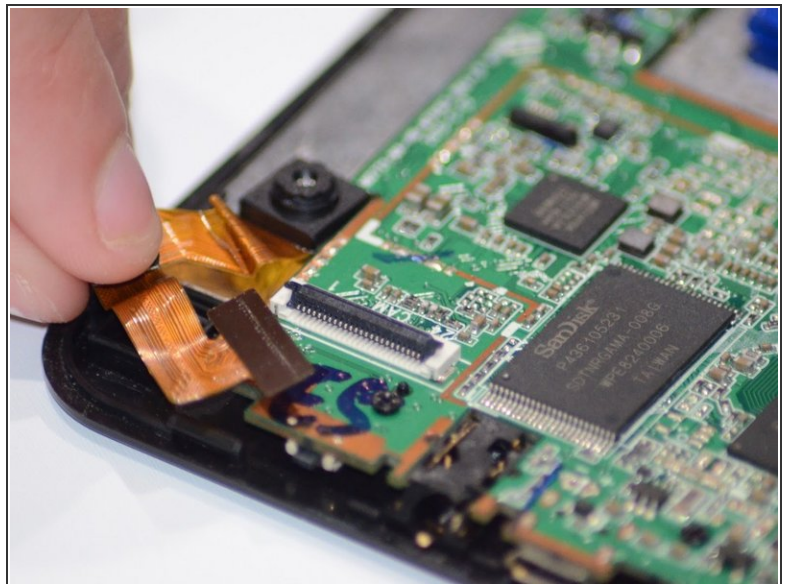
- [iFixit Opening Tools](#) (1)
-

Step 1 — Back Panel



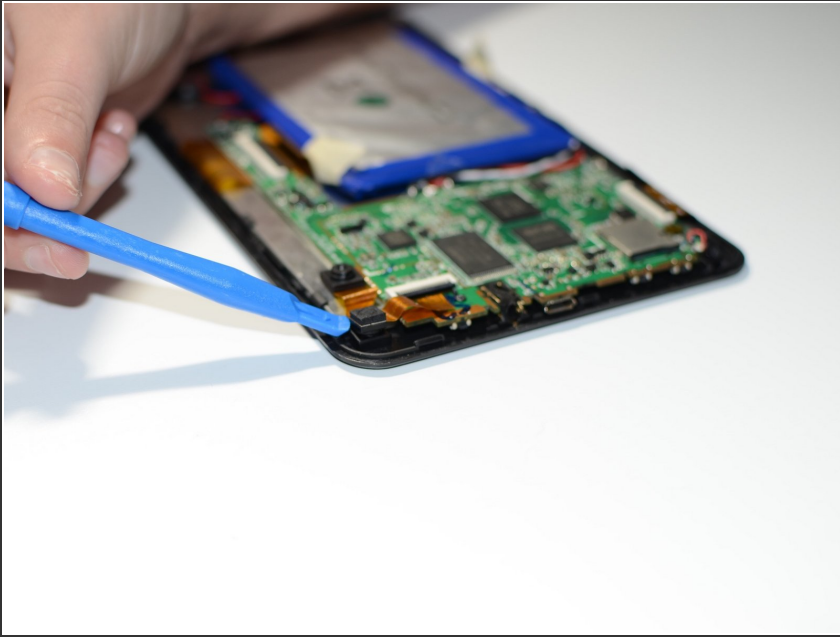
- Remove back panel by wedging the iFixit opening tool on all four sides of the device.

Step 2 — Camera Lens



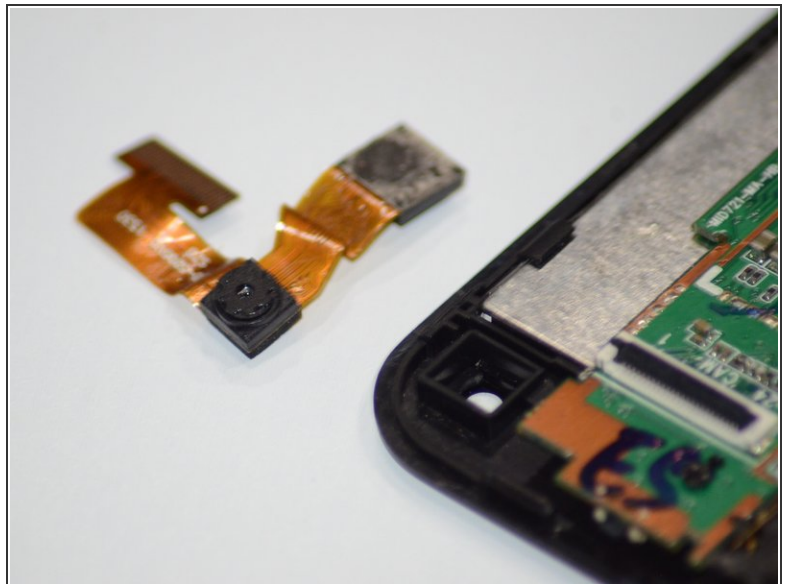
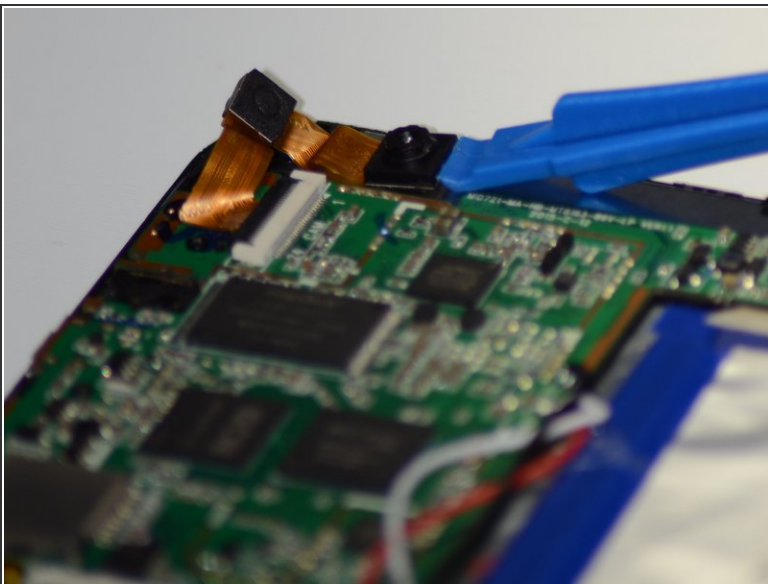
- Lift up the black tab on the motherboard using an opening tool, and slide the ribbon out of the slot beneath the black tab.

Step 3



- Remove the front-facing camera by sliding it out of its slot in the corner of the device using an opening tool.

Step 4



- Remove the rear-facing camera by prying it off the internal panel using an opening tool.

To reassemble your device, follow these instructions in reverse order.